



Match-up database Analyses Report

SMOS SSS L2 v700 (ESA)

Argo

Global Ocean

prepared by the Pi-MEP Consortium

May 05, 2023

Contents

1	Overview	7
2	The MDB file datasets	8
2.1	Satellite SSS product	8
2.1.1	SMOS SSS L2 v700 (ESA)	8
2.2	<i>In situ</i> SSS dataset	11
2.3	Auxiliary geophysical datasets	12
2.3.1	CMORPH	12
2.3.2	ASCAT	13
2.3.3	ISAS	13
2.3.4	World Ocean Atlas Climatology	14
2.4	Overview of the Match-ups generation method	14
2.4.1	<i>In situ</i> /Satellite data filtering	14
2.4.2	<i>In situ</i> /Satellite Co-localization	15
2.4.3	MDB pair Co-localization with auxiliary data and complementary information	15
2.4.4	Content of the Match-Up NetCDF files	16
2.5	MDB characteristics for the particular <i>in situ</i> /satellite pairs	23
2.5.1	Number of paired SSS data as a function of time and distance to coast	23
2.5.2	Histograms of the SSS match-ups	24
2.5.3	Distribution of <i>in situ</i> SSS depth measurements	24
2.5.4	Spatial Distribution of Match-ups	25
2.5.5	Histograms of the spatial and temporal lags of the match-ups pairs	25
3	MDB file Analyses	26
3.1	Spatial Maps of the Temporal mean and Std of <i>in situ</i> and satellite SSS and of the difference (Δ SSS)	26
3.1.1	Ascending and Descending orbits	26
3.1.2	Ascending orbits	27
3.1.3	Descending orbits	28
3.2	Time series of the monthly median and Std of <i>in situ</i> and satellite SSS and of the (Δ SSS)	30
3.2.1	Ascending and Descending orbits	30
3.2.2	Ascending orbits	30
3.2.3	Descending orbits	31
3.3	Zonal mean and Std of <i>in situ</i> and satellite SSS and of the Δ SSS	32
3.3.1	Ascending and Descending orbits	32
3.3.2	Ascending orbits	33
3.3.3	Decending orbits	34
3.4	Scatterplots of satellite vs <i>in situ</i> SSS by latitudinal bands	35
3.4.1	Ascending and Descending orbits	36
3.4.2	Ascending orbits	37
3.4.3	Descending orbits	38
3.5	Time series of the monthly median and Std of the Δ SSS sorted by latitudinal bands	39
3.5.1	Ascending and Descending orbits	39
3.5.2	Ascending orbits	40
3.5.3	Descending orbits	41

3.6	Δ SSS sorted as function of geophysical parameters	41
3.7	Δ SSS maps and statistics for different geophysical conditions	42
4	Summary	44

List of Figures

1	Number of match-ups between Argo and SMOS SSS L2 v700 (ESA) SSS as a function of time (a) and as function of the distance to coast (b) over the Global Ocean Pi-MEP region and for the full satellite product period.	23
2	Histograms of SSS from Argo (a) and SMOS SSS L2 v700 (ESA) (b) considering all match-up pairs per bins of 0.1 over the Global Ocean Pi-MEP region and for the full satellite product period.	24
3	Histograms of the depth of the upper level SSS measurements from Argo in the Match-up DataBase for the Global Ocean Pi-MEP region (a) and temporal mean spatial distribution of pressure of the <i>in situ</i> SSS data over $1^\circ \times 1^\circ$ boxes and for the full satellite product period (b).	24
4	Number of SSS match-ups between Argo SSS and the SMOS SSS L2 v700 (ESA) SSS product for the Global Ocean Pi-MEP region over $1^\circ \times 1^\circ$ boxes and for the full satellite product period.	25
5	Histograms of the spatial (a) and temporal (b) lags between the time of the Argo measurements and the date of the corresponding SMOS SSS L2 v700 (ESA) SSS product.	25
6	Temporal mean (left) and Std (right) of SSS from SMOS SSS L2 v700 (ESA) (top), Argo (middle), and of Δ SSS (Satellite - Argo). Only match-up pairs are used to generate these maps.	27
7	Temporal mean (left) and Std (right) of SSS from SMOS SSS L2 v700 (ESA) (top), Argo (middle), and of Δ SSS (Satellite - Argo). Only match-up pairs and ascending orbits are used to generate these maps.	28
8	Temporal mean (left) and Std (right) of SSS from SMOS SSS L2 v700 (ESA) (top), Argo (middle), and of Δ SSS (Satellite - Argo). Only match-up pairs and descending orbits are used to generate these maps.	29
9	Time series of the monthly median SSS (top), median of Δ SSS (Satellite - Argo) and Std of Δ SSS (Satellite - Argo) over the Global Ocean Pi-MEP region considering all match-ups collected by the Pi-MEP.	30
10	Time series of the monthly median SSS (top), median of Δ SSS (Satellite - Argo) and Std of Δ SSS (Satellite - Argo) over the Global Ocean Pi-MEP region considering only ascending orbits from all match-ups collected by the Pi-MEP.	31
11	Time series of the monthly median SSS (top), median of Δ SSS (Satellite - Argo) and Std of Δ SSS (Satellite - Argo) over the Global Ocean Pi-MEP region considering only descending orbits from all match-ups collected by the Pi-MEP.	32
12	Left panel: Zonal mean SSS from SMOS SSS L2 v700 (ESA) (black) and from Argo (blue). Right panel: Zonal mean of Δ SSS (Satellite - Argo) for all the collected Pi-MEP match-up pairs estimated over the full satellite product period.	33
13	Left panel: Zonal mean SSS from SMOS SSS L2 v700 (ESA) satellite product (black) and from Argo (blue). Right panel: Zonal mean of Δ SSS (Satellite - Argo) considering only ascending orbits from all the collected Pi-MEP match-up pairs estimated over the full satellite product period. The dash curves correspond to the same estimates but considering only the last month of data.	34

14	Left panel: Zonal mean SSS from SMOS SSS L2 v700 (ESA) satellite product (black) and from Argo (blue). Right panel: Zonal mean of Δ SSS (Satellite - Argo) considering only descending orbits from all the collected Pi-MEP match-up pairs estimated over the full satellite product period. The dash curves correspond to the same estimates but considering only the last month of data.	35
15	Contour maps of the concentration of SMOS SSS L2 v700 (ESA) SSS (y-axis) versus Argo SSS (x-axis) at match-up pairs for different latitude bands. For each plot, the red line shows $x=y$. The black thin and dashed lines indicate a linear fit through the data cloud and the $\pm 95\%$ confidence levels, respectively. The number match-up pairs n , the slope and R^2 coefficient of the linear fit, the root mean square (RMS) and the mean bias between satellite and <i>in situ</i> data are indicated for each latitude band in each plots.	36
16	Contour maps of the concentration of SMOS SSS L2 v700 (ESA) SSS (y-axis) versus Argo SSS (x-axis) at match-up pairs for different latitude bands. For each plot, the red line shows $x=y$. The black thin and dashed lines indicate a linear fit through the data cloud and the $\pm 95\%$ confidence levels, respectively. The number match-up pairs n , the slope and R^2 coefficient of the linear fit, the root mean square (RMS) and the mean bias between satellite and <i>in situ</i> data are indicated for each latitude band in each plots.	37
17	Contour maps of the concentration of SMOS SSS L2 v700 (ESA) SSS (y-axis) versus Argo SSS (x-axis) at match-up pairs for different latitude bands. For each plot, the red line shows $x=y$. The black thin and dashed lines indicate a linear fit through the data cloud and the $\pm 95\%$ confidence levels, respectively. The number match-up pairs n , the slope and R^2 coefficient of the linear fit, the root mean square (RMS) and the mean bias between satellite and <i>in situ</i> data are indicated for each latitude band in each plots.	38
18	Monthly median (red curves) of Δ SSS (Satellite - Argo) and ± 1 Std (black vertical thick bars) as function of time for all the collected Pi-MEP match-up pairs estimated over the Global Ocean Pi-MEP region and for the full satellite product period are shown for different latitude bands: (a) 80°S-80°N, (b) 20°S-20°N, (c) 40°S-20°S and 20°N-40°N and (d) 60°S-40°S and 40°N-60°N.	39
19	Monthly median (red curves) of Δ SSS (Satellite - Argo) and ± 1 Std (black vertical thick bars) as function of time for all the collected Pi-MEP match-up pairs estimated over the Global Ocean Pi-MEP region and for the full satellite product period are shown for different latitude bands: (a) 80°S-80°N, (b) 20°S-20°N, (c) 40°S-20°S and 20°N-40°N and (d) 60°S-40°S and 40°N-60°N.	40
20	Monthly median (red curves) of Δ SSS (Satellite - Argo) and ± 1 Std (black vertical thick bars) as function of time for all the collected Pi-MEP match-up pairs estimated over the Global Ocean Pi-MEP region and for the full satellite product period are shown for different latitude bands: (a) 80°S-80°N, (b) 20°S-20°N, (c) 40°S-20°S and 20°N-40°N and (d) 60°S-40°S and 40°N-60°N.	41
21	Δ SSS (Satellite - Argo) sorted as function of Argo SSS values a), Argo SST b), ASCAT Wind speed c), CMORPH rain rate d), distance to coast (e) and <i>in situ</i> measurement depth (f). In all plots the median and Std of Δ SSS for each bin is indicated by the red curves and black vertical thick bars (± 1 Std)	42

22	Temporal mean gridded over spatial boxes of size $1^\circ \times 1^\circ$ of Δ SSS (SMOS SSS L2 v700 (ESA) - Argo) for 6 different subdatasets corresponding to: RR=0 mm/h, $3 < U_{10} < 12$ m/s, SST $> 5^\circ\text{C}$, distance to coast > 800 km (a), RR=0 mm/h, $3 < U_{10} < 12$ m/s (b), RR > 1 mm/h and $U_{10} < 4$ m/s (c), MLD < 20 m (d), WOA2013 SSS Std < 0.2 (e), WOA2013 SSS Std > 0.2 (f).	43
23	Normalized histogram of Δ SSS (SMOS SSS L2 v700 (ESA) - Argo) for 6 different subdatasets corresponding to: RR=0 mm/h, $3 < U_{10} < 12$ m/s, SST $> 5^\circ\text{C}$, distance to coast > 800 km (a), RR=0 mm/h, $3 < U_{10} < 12$ m/s (b), RR > 1 mm/h and $U_{10} < 4$ m/s (c), MLD < 20 m (d), WOA2013 SSS Std < 0.2 (e), WOA2013 SSS Std > 0.2 (f).	44

Acronym

Aquarius	NASA/CONAE Salinity mission
ASCAT	Advanced Scatterometer
ATBD	Algorithm Theoretical Baseline Document
BLT	Barrier Layer Thickness
CMORPH	CPC MORPHing technique (precipitation analyses)
CPC	Climate Prediction Center
CTD	Instrument used to measure the conductivity, temperature, and pressure of seawater
DM	Delayed Mode
EO	Earth Observation
ESA	European Space Agency
FTP	File Transfer Protocol
GOSUD	Global Ocean Surface Underway Data
GTMBA	The Global Tropical Moored Buoy Array
Ifremer	Institut français de recherche pour l'exploitation de la mer
IPEV	Institut polaire français Paul-Émile Victor
IQR	Interquartile range
ISAS	<i>In Situ</i> Analysis System
Kurt	Kurtosis (fourth central moment divided by fourth power of the standard deviation)
L2	Level 2
LEGOS	Laboratoire d'Etudes en Géophysique et Océanographie Spatiales
LOCEAN	Laboratoire d'Océanographie et du Climat : Expérimentations et Approches Numériques
LOPS	Laboratoire d'Océanographie Physique et Spatiale
MDB	Match-up Data Base
MEOP	Marine Mammals Exploring the Oceans Pole to Pole
MLD	Mixed Layer Depth
NCEI	National Centers for Environmental Information
NRT	Near Real Time
NTAS	Northwest Tropical Atlantic Station
OI	Optimal interpolation
Pi-MEP	Pilot-Mission Exploitation Platform
PIRATA	Prediction and Researched Moored Array in the Atlantic
QC	Quality control
R_{sat}	Spatial resolution of the satellite SSS product
RAMA	Research Moored Array for African-Asian-Australian Monsoon Analysis and Prediction
r^2	Square of the Pearson correlation coefficient
RMS	Root mean square
RR	Rain rate
SAMOS	Shipboard Automated Meteorological and Oceanographic System
Skew	Skewness (third central moment divided by the cube of the standard deviation)
SMAP	Soil Moisture Active Passive (NASA mission)
SMOS	Soil Moisture and Ocean Salinity (ESA mission)
SPURS	Salinity Processes in the Upper Ocean Regional Study
SSS	Sea Surface Salinity
$SSS_{in situ}$	<i>In situ</i> SSS data considered for the match-up

SSS _{SAT}	Satellite SSS product considered for the match-up
ΔSSS	Difference between satellite and <i>in situ</i> SSS at colocalized point ($\Delta\text{SSS} = \text{SSS}_{\text{SAT}} - \text{SSS}_{\text{insitu}}$)
SST	Sea Surface Temperature
Std	Standard deviation
Std*	Robust Standard deviation = $\text{median}(\text{abs}(x - \text{median}(x))) / 0.67$ (less affected by outliers than Std)
Stratus	Surface buoy located in the eastern tropical Pacific
Survostral	SURveillance de l'Océan AuSTRAL (Monitoring the Southern Ocean)
TAO	Tropical Atmosphere Ocean
TSG	ThermoSalinoGraph
WHOI	Woods Hole Oceanographic Institution
WHOTS	WHOI Hawaii Ocean Time-series Station
WOA	World Ocean Atlas

1 Overview

In this report, we present systematic analyses of the Match-up DataBase (MDB) files generated by the Pi-MEP platform within the following Pi-MEP region and for the below pair of Satellite/*in situ* SSS data:

- Pi-MEP region: Global Ocean (download the corresponding mask [here](#))
- SSS satellite product (SSS_{SAT}): SMOS SSS L2 v700 (ESA)
- *In situ* dataset ($SSS_{In situ}$): Argo (download the corresponding *in situ* report [here](#))

In the following, $\Delta SSS = SSS_{SAT} - SSS_{In situ}$ denotes the difference between the satellite and *in situ* SSS at the colocalized points that form the MDB.

This report presents successively:

The MDB file DataSets (Section 2)

- A short description of the satellite SSS product considered in the match-up (2.1)
- A short description of the *in situ* SSS dataset considered in the match-up (2.2)
- A short description of the auxiliary geophysical datasets co-localized with SSS pairs (2.3)
- An overview of how the Match-ups were evaluated (2.4)
- An overview of the MDB characteristics for the particular *in situ*/satellite pairs (2.5)

The major results of the MDB file Analyses (Section 3)

- Spatial Maps of the Time-mean and temporal Std of *in situ* and satellite SSS and of the ΔSSS (3.1.1)
- Time series of the monthly median and Std of *in situ* and satellite SSS and of the ΔSSS (3.2)
- Zonal mean and Std of *in situ* and satellite SSS and of the ΔSSS (3.3)
- Scatterplots of satellite vs *in situ* SSS by latitudinal bands (3.4)
- Time series of the monthly median and Std of the ΔSSS sorted by latitudinal bands (3.5)
- ΔSSS sorted as function of geophysical parameters (3.6)
- ΔSSS maps and statistics for different geophysical conditions (3.7)

All analyses are conducted over the Pi-MEP Region specified above and over the full satellite SSS product period. Original figures appearing in this report can be downloaded [here](#) as PNG files.

2 The MDB file datasets

2.1 Satellite SSS product

2.1.1 SMOS SSS L2 v700 (ESA)

Quality and major features of the SMOS Level 2 Sea Surface Salinity data products generated by version 700 of the Level 2OS Operational Processor (L2OS) can be found in the [SMOS-Level-2-Ocean-Salinity-v700-release-note](#). Version 700 of the Level 2 Sea Surface Salinity data product is available for the SMOS mission lifetime with the following file class and version:

File class	File version	From	To
REPR	v700	1 June 2010	24 Mai 2021
OPER	v700	25 Mai 2021	present

Measurements from the commissioning phase (12 January 2010 - 31 May 2010) show drifts due to instrument tests taking place during this period. Even though data are available (upon request) it is not advisable to use them. The SMOS data users are invited to use this new data set, which supersedes the previous one generated by the algorithm baseline version 662 and to read this note carefully to ensure optimal exploitation of the version 700 data set. Further information on the quality of the dataset can be found in the reprocessing verification report and in the validations report (available from June 2021 onwards) [here](#).

Main improvements in the L2OS version 700 data set

The major improvements introduced in the currently operational version 700 of the SMOS Level 2 sea surface salinity processor are:

1. The SSS anomaly field has been substantially revisited. The fields present in the version v662 of the products were obtained by simply subtracting the climatological SSS value contained in WOA2009 from the retrieved SMOS SSS values. Since v700, the SSS anomaly is computed against a SMOS-derived SSS climatology using 7 years of SSS retrievals (2013-2019). In order to improve quality, the SMOS-derived climatology corrects also for part of the systematic biases found in the SMOS SSS retrievals (such as land contamination). A full description of the method to produce the SMOS-based climatology appears in the section 2.2.9 of the TGRD document (see references in this release note).
2. The Somaraju and Trumpf (ST) seawater dielectric constant model has been now introduced to replace Klein and Swift's dielectric constant model that was used in the previous versions of the algorithm to estimate the specular sea surface emissivity and thus retrieve salinity. The ST model has been tuned to minimize SMOS limitations found in the SSS retrievals with the original model of ST and to improve SSS retrieval quality in cold waters with respect the Klein and Swift's dielectric constant model. This was achieved with the support of the cardioid parameters provided along with the UDP products (so called, Acard field). Further information can be found in the section 4.1.4 of the ATBD as well as in [Boutin et al. \(2020\)](#) (see references of this release note)
3. The procedure to compute the Ocean Target Transform (OTT) for systematic instrumental bias correction has now improved. In particular, a more stringent filtering is applied to reduce the level of noise in the OTT, especially in the upper part of the AF-FOV. The novel filtering stabilizes the OTT which becomes less impacted by Radio Frequency Interferences

(RFI) or errors due to TEC variations. Further details are provided in section 5.8.3 of the ATBD (see references of this release note).

4. The estimation of the theoretical retrieval error has also been improved and now is more representative of the true error. This change impacts the values of the UDP fields `Sigma_SSS_corr`, `Sigma_SSS_uncorr`, and `Sigma_SSS_anom`. For further details, reader is invited to check section 4.11.2 of the ATBD (see references of this release note).
5. An improved correction for the Land/Sea Contamination (LSC) has also now been introduced to reduce SSS retrievals biases in areas located at distances less than 1,000 km from the nearest coasts. The main differences with respect v662 is that the new method makes use of an improved reference SSS to derive the correction. Specifically, the In Situ Analysis System (ISAS-15; Gaillard et al. (2016)) derived fields are used instead of the World Ocean Atlas (WOA) Climatology fields used in previous version. A stricter RFI filtering and a gap-filling method based on an empirical convolution kernel are also applied in this latest LSC correction. These changes are meant to reduce the impact of the limitations from previous version, where areas with high natural dynamics or impacted frequently by RFI were not well represented in the correction (particularly in the tropical Atlantic). Further information is found in the section 2.2.8 of the TGRD (see references of this release note).
6. The flags defined to estimate the impact of sea-state conditions on SSS retrieval quality have been now revisited. Six flags called `Fg_sc_sea_state_n`, with $n=1, \dots, 6$, are present in the UDP files, which can be combined to filter SSS retrievals according to sea-state. These flags are based on threshold values of inverse wave eight (Ω) and swell fraction which have been now better defined and corrected to represent more accurately the presence of young seas, old seas, and swell, correspondingly. The worst SSS quality is observed for `Fg_sc_sea_state_1` (wind sea dominated old seas) and `Fg_sc_sea_state_5` (wind sea dominated young sea state). Data acquired in these conditions are less reliable. .
7. SMOS SSS retrievals from version 662 were obtained including a novel sun glint correction. The sun glint is estimated as a combination of the sun L-band radiation reflection in the ocean's surface and the impact of the surface roughness in the scattering of the signal. The modelled brightness temperature associated to sun glint within the SMOS scenes is calculated and included as part of the geophysical model function for the retrieval. In the version 700, the source of solar L-band radio fluxes has been modified, replacing the previously used rescaled Penticton datasets with an inter-calibrated L-band solar flux from on-ground radio-telescope rescaled for optimal SMOS data processing. This has proved to be a more accurate source of L-band solar fluxes for the purposes of the mission. For further details, readers are directed to section 2.4.6 and Annex A.3 from TGRD (see references of this release note).
8. Updated configuration of switches and filters used in the data processing. For further information see the section 2.4.7 of the TGRD (see references of this release note). .

The L2OS version 700 data set has been generated using a newly recalibrated L1c dataset of SMOS MIRAS Brightness Temperatures (version 724). For further details on the L1c data sets see the L1c data version 724 read-me-first note available [here](#).

L2OS version 700 performance and caveats

The reprocessed data set has been analysed by ESLs and ARGANS. The reference document is mentioned above. The main conclusions are:

- Land-sea contamination corrected salinities (SSS_corr) almost cancel the global mean bias in near-to-coast regions (> 40 km and < 800 km) as compared to SSS_uncorr. Caveats found in previous version in the tropical Atlantic Ocean and in the high northern latitudes have disappeared.
- On SSS_uncorr, land-sea contamination is still present, but with different across track signatures and it is less variable across swath.
- High latitudes of the southern hemisphere: the new dielectric constant model corrects for most positive SSS biases in descending orbits during March-August period. However, due to remaining contamination of other origin (likely sea ice contamination), positive biases still remain for the rest of the year. On ascending orbits, negative biases ~ -0.5 pss are observed all the year round.
- The new salinity anomaly product exhibit reduced systematic errors (such as land-sea contamination) compared with the previous anomaly fields which used WOA climatology as a reference. Nevertheless, systematic seasonal latitudinal errors are not corrected in this version and generate artefacts.
- Ascending-descending differences in retrieved SSS remain, but they are more homogeneous spatially than in the previous version. We noticed stronger sea-ice contamination in the southern ocean on ascending orbits than in previous version.

Filtering retrievals

We strongly recommend users to filter L2OS sea surface salinity retrievals using the procedure detailed below. The list of flags recommended to use for data filtering is as follows:

Table 1: List of recommended flags

Flag	Rejection condition
Fg_ctrl_ecmwf	0
Fg_ctrl_num_meas_min	1
Fg_ctrl_num_meas_low	1
Fg_ctrl_many_outliers	1
Fg_ctrl_sunclinT	1
Fg_ctrl_moonglint	1
Fg_ctrl_reach_maxiter	1
Fg_ctrl_marq	1
Fg_ctrl_chi2	1
Fg_ctrl_chi2_p	1
Fg_ctrl_gal_noise	1
Fg_ctrl_suspect_rfi	1
Fg_sc_low_wind	0
Fg_sc_land_sea_coast1	0
Fg_sc_ice	1
Fg_sc_suspect_ice	1
Fg_sc_sea_state_1	1
Fg_sc_sea_state_5	1

Full description of the flags appears in the SMOS Level 2 and Auxiliary Data Products Specifications document (see references at the end of the document). In addition, the following parameters can be controlled via threshold to retain only the best data: $Dg_af_fov > 130$. Note that these filter strategies offer the best quality results, but with a significant reduction of valid grid points. Users may consider relaxing some of the criteria to improve spatial coverage. For instance, the use of Dg_af_fov (typically spanning from 0 to 256 measurements) has the side effect of clipping the sides of the orbits, reducing the width of the track in the orbit to approximately 700 kms. By selecting the recommended criteria, users are selecting grid points that have been obtained primarily from measurements situated in the Alias-Free Field of View (AF-FOV) of the SMOS snapshots, which penalizes grid points with a larger proportion of measurements from the Extended AF-FOV (EAF-FOV).

Flags used before MDB files generation

We only select data in the MDB files such as the following conditions or flags are met:

- $Dg_af_fov > 130$
- `control_flag_set`: CTRL_ECMWF
- `control_flag_clear`: CTRL_NUM_MEAS_MIN, CTRL_NUM_MEAS_LOW, CTRL_MANY_OUTLIERS, CTRL_SUNGLINT, CTRL_MOONGLINT, CTRL_REACH_MAXITER, CTRL_MARQ, CTRL_CHI2_P, CTRL_SUSPECT_RFI
- `science_flag_set`: SC_LOW_WIND, SC_LAND_SEA_COAST1
- `science_flag_clear`: SC_ICE, SC_SUSPECT_ICE

Satellite SSS product characteristics

Table 2: Satellite SSS product characteristics

SMOS SSS L2 v700 (ESA)	
Spatial resolution	~40 km
Temporal repeat	3 days
Temporal coverage	From 2010-06-01 to now
Spatial coverage	Global [-180 180 -90 90]
Data Provider	ESA
Version	700
ATBD	SMOS_L2OS-ATBD
Data access	level-2-ocean-salinity

2.2 *In situ* SSS dataset

Argo is a global array of 3,000 free-drifting profiling floats that measures the temperature and salinity of the upper 2000 m of the ocean. This allows continuous monitoring of the temperature and salinity of the upper ocean, with all data being relayed and made publicly available within hours after collection. The array provides around 100,000 temperature/salinity profiles per year distributed over the global oceans at an average of 3-degree spacing. Only Argo salinity and

temperature float data with quality index set to 1 or 2 and data mode set to real time (RT), real time adjusted (RTA) and delayed mode (DM) are considered in the Pi-MEP. Argo floats which may have problems with one or more sensors appearing in the [grey list](#) maintained at the Coriolis/GDACs are discarded. Furthermore, Pi-MEP provides an additional [list](#) of ~ 1000 "suspicious" argo salinity profiles that are also removed before analysis. The upper ocean salinity and temperature values recorded between 0m and 10m depth are considered as Argo sea surface salinities (SSS) and sea surface temperatures (SST). These data were collected and made freely available by the international Argo project and the national programs that contribute to it ([Argo \(2000\)](#)).

2.3 Auxiliary geophysical datasets

Additional EO datasets are used to characterize the geophysical conditions at the *in situ*/satellite SSS pair measurement locations and time, and 10 days prior to the measurements, to get an estimate of the geophysical concomitant condition and history. As discussed in [Boutin et al. \(2016\)](#), the presence of vertical gradients in, and horizontal variability of, sea surface salinity indeed complicates comparison of satellite and *in situ* measurements. The additional EO data are used here to get a first estimates of conditions for which L-band satellite SSS measured in the first centimeters of the upper ocean within a 50-150 km diameter footprint might differ from pointwise *in situ* measurements performed in general between 10 and 5 m depth below the surface. The spatio-temporal variability of SSS within a satellite footprint (50–150 km) is a major issue for satellite SSS validation in the vicinity of river plumes, frontal zones, and significant precipitation areas, among others. Rainfall can in some cases produce vertical salinity gradients exceeding 1 pss m^{-1} ; consequently, it is recommended that satellite and *in situ* SSS measurements less than 3–6 h after rain events should be considered with care when used in satellite calibration/validation analyses. To identify such situation, the Pi-MEP platform is first using [CMORPH](#) products to characterize the local value and history of rain rate and [ASCAT](#) gridded data are used to characterize the local surface wind speed and history. For validation purpose, the [ISAS](#) monthly SSS *in situ* analysed fields at 5 m depth are collocated and compared with the satellite SSS products. The use of ISAS is motivated by the fact that it is used in the SMOS L2 official validation protocol in which systematic comparisons of SMOS L2 retrieved SSS with ISAS are done. In complement to ISAS, monthly std climatological fields from the World Ocean Atlas ([WOA13](#)) at the match-up pairs location and date are also used to have an a priori information of the local SSS variability.

2.3.1 CMORPH

Precipitation are estimated using the [CMORPH](#) 3-hourly products at $1/4^\circ$ resolution ([Joyce et al. \(2004\)](#)). CMORPH (CPC MORPHing technique) produces global precipitation analyses at very high spatial and temporal resolution. This technique uses precipitation estimates that have been derived from low orbiter satellite microwave observations exclusively, and whose features are transported via spatial propagation information that is obtained entirely from geostationary satellite IR data. At present NOAA incorporate precipitation estimates derived from the passive microwaves aboard the DMSP 13, 14 and 15 (SSM/I), the NOAA-15, 16, 17 and 18 (AMSU-B), and AMSR-E and TMI aboard NASA's Aqua, TRMM and GPM spacecraft, respectively. These estimates are generated by algorithms of [Ferraro \(1997\)](#) for SSM/I, [Ferraro et al. \(2000\)](#) for AMSU-B and [Kummerow et al. \(2001\)](#) for TMI. Note that this technique is not a precipitation estimation algorithm but a means by which estimates from existing microwave rainfall algorithms can be combined. Therefore, this method is extremely flexible such that any precipitation estimates from any microwave satellite source can be incorporated.

With regard to spatial resolution, although the precipitation estimates are available on a grid with a spacing of 8 km (at the equator), the resolution of the individual satellite-derived estimates is coarser than that - more on the order of 12 x 15 km or so. The finer "resolution" is obtained via interpolation.

In effect, IR data are used as a means to transport the microwave-derived precipitation features during periods when microwave data are not available at a location. Propagation vector matrices are produced by computing spatial lag correlations on successive images of geostationary satellite IR which are then used to propagate the microwave derived precipitation estimates. This process governs the movement of the precipitation features only. At a given location, the shape and intensity of the precipitation features in the intervening half hour periods between microwave scans are determined by performing a time-weighting interpolation between microwave-derived features that have been propagated forward in time from the previous microwave observation and those that have been propagated backward in time from the following microwave scan. NOAA refer to this latter step as "morphing" of the features.

For the present Pi-MEP products, we only considered the 3-hourly products at 1/4 degree resolution. The entire CMORPH record (December 2002-present) for 3-hourly, 1/4 degree lat/lon resolution can be found at: ftp://ftp.cpc.ncep.noaa.gov/precip/CMORPH_V1.0/CRT/. CMORPH estimates cover a global belt (-180°W to 180°E) extending from 60°S to 60°N latitude and are available for the complete period of the Pi-MEP core datasets (Jan 2010-now).

2.3.2 ASCAT

Advanced SCATterometer (ASCAT) daily data produced and made available at [Ifremer/CERSAT](#) on a 0.25°x0.25° resolution grid ([Bentamy and Fillon \(2012\)](#)) since March 2007 are used to characterize the mean daily wind at the match-up pair location as well as the wind history during the 10-days period preceding the in situ measurement date. These wind fields are calculated based on a geostatistical method with external drift. Remotely sensed data from ASCAT are considered as observations while those from numerical model analysis (ECMWF) are associated with the external drift. The spatial and temporal structure functions for wind speed, zonal and meridional wind components are estimated from ASCAT retrievals. Furthermore, the new procedure includes a temporal interpolation of the retrievals based on the complex empirical orthogonal function (CEOF) approach, in order to enhance the sampling length of the scatterometer observations. The resulting daily wind fields involves the main known surface wind patterns as well as some variation modes associated with temporal and spatial moving features. The accuracy of the gridded winds was investigated through comparisons with moored buoy data in [Bentamy et al. \(2012\)](#) and resulted in rms differences for wind speed and direction are about 1.50 m.s⁻¹ and 20°.

2.3.3 ISAS

The In Situ Analysis System (ISAS), as described in [Gaillard et al. \(2016\)](#) is a data based re-analysis of temperature and salinity fields over the global ocean 70°N–70°S on a 1/2° grid. It was initially designed to synthesize the temperature and salinity profiles collected by the Argo program. It has been later extended to accommodate all type of vertical profile as well as time series. ISAS gridded fields are entirely based on *in situ* measurements. The methodology and configuration have been conceived to preserve as much as possible the data information content and resolution. ISAS is developed and run in a research laboratory ([LOPS](#)) in close collaboration with Coriolis, one of Argo Global Data Assembly Center and unique data provider for the Mercator operational oceanography system. In Pi-MEP, the products used are the [IN-SITU_GLO_TS_OA_REP_OBSERVATIONS_013_002_b](#) for the period 2010 to 2019 and the [IN-](#)

SITU_GLO_TS_OA_NRT_OBSERVATIONS_013_002_a for the Near-Real Time (2020-2021) derived at the Coriolis data center and provided by the Copernicus Marine Environment Monitoring Service (**CMEMS**). The major contribution to the data set is from Argo array of profiling floats, reaching an approximate resolution of one profile every 10-days and every 3-degrees over the satellite SSS period (<http://www.umr-lops.fr/SNO-Argo/Products/ISAS-T-S-fields/>); in this version SSS from ship of opportunity thermosalinographs are not used, so that we can consider SMOS SSS validation using these measurements independent of ISAS. The ISAS optimal interpolation involves a structure function modeled as the sum of two Gaussian functions, each associated with specific time and space scales, resulting in a smoothing over typically 3 degrees. The smallest scale which can be retrieved with ISAS analysis is not smaller than 300–500 km (Kolodziejczyk et al. (2015)). For validation purpose, the ISAS monthly SSS fields at 5 m depth are collocated and compared with the satellite SSS products and included in the Pi-MEP Match-up files. In addition, the "percentage of variance" fields (PCTVAR) contained in the ISAS analyses provide information on the local variability of *in situ* SSS measurements within $1/2^\circ \times 1/2^\circ$ boxes.

2.3.4 World Ocean Atlas Climatology

The World Ocean Atlas 2013 version 2 (**WOA13 V2**) is a set of objectively analyzed (1° grid) climatological fields of *in situ* temperature, salinity and other variables provided at standard depth levels for annual, seasonal, and monthly compositing periods for the World Ocean. It also includes associated statistical fields of observed oceanographic profile data interpolated to standard depth levels on 5° , 1° , and 0.25° grids. We use these fields in complement to ISAS to characterize the climatological fields (annual mean and std) at the match-up pairs location and date.

2.4 Overview of the Match-ups generation method

The match-up production is basically a three steps process:

1. preparation of the input *in situ* and satellite data, and,
2. co-localization of satellite products with *in situ* SSS measurements.
3. co-localization of the *in situ*/satellite pair with auxiliary information.

In the following, we successively detail the approaches taken for these different steps.

2.4.1 *In situ*/Satellite data filtering

The first step consists in filtering Argo *in situ* data using the quality flags as described in 2.2 so that only valid salinity data remains in the final match-up files.

For high-spatial resolution *in situ* SSS measurements such as the Thermo-SalinoGraph (TSG) SSS data from research vessels, Voluntary Observing Ships (VOS) or sailing ships, as well as SSS data from surface drifters, an additional spatial filtering step is performed on the *in situ* data that will be in fine compared to the satellite SSS products. If R_{sat} is the spatial resolution of the satellite SSS product (L2 to L3-L4), the *in situ* data at its original spatial resolution are spatially low pass filtered using a running median filter with a window width= R_{sat} in order to try to minimize the spatial representativeness uncertainty when comparing to the lower spatial resolution of the satellite SSS product. Both original and filtered data are finally stored in the MDB files.

Only for satellite L2 SSS data, a third step consist in filtering spurious data using the flags and associated recommendation as provided by the official data centers and described in 2.1.

2.4.2 *In situ*/Satellite Co-localization

In this step, each SSS satellite acquisition is co-localized with the filtered *in situ* measurements. The method used for co-localization differ if the satellite SSS is a swath product (so-called Level 2-types) or a time-space composite product (so-called Level 3/level 4-types).

- For L2 SSS swath data :

If R_{sat} is the spatial resolution of the satellite swath SSS product, for each *in situ* data sample collected in the Pi-MEP database, the platform searches for all satellite SSS data found at grid nodes located within a radius of $R_{sat}/2$ from the *in situ* data location and acquired with a time-lag from the *in situ* measurement date that is less or equal than ± 12 hours. If several satellite SSS samples are found to meet these criteria, the final satellite SSS match-up point is selected to be the closest in time from the *in situ* data measurement date. The final spatial and temporal lags between the *in situ* and satellite data are stored in the MDB files.

- For L3 and L4 composite SSS products :

If R_{sat} is the spatial resolution of the composite satellite SSS product and D the period over which the composite product was built (e.g., periods of 1, 7, 8, 9, 10, 18 days, 1 month, etc..) with central time t_o , for each *in situ* data sample collected in the Pi-MEP database during period D, the platform searches for all satellite SSS data of the composite product found at grid nodes located within a radius of $R_{sat}/2$ from the *in situ* data location. If several satellite SSS product samples are found to meet these criteria, the final satellite SSS match-up point is chosen to be the composite SSS with central time t_o which is the closest in time from the *in situ* data measurement date. The final spatial and temporal lags between the *in situ* and satellite data are stored in the MDB files.

2.4.3 MDB pair Co-localization with auxiliary data and complementary information

MDB data consist of satellite and *in situ* SSS pairs but also of auxiliary geophysical parameters such as local and history of wind speed and rain rates, as well as various information (climatology, distance to coast, mixed layer depth, barrier layer thickness, etc) that can be derived from *in situ* data and which are included in the final match-up files. The collocation of auxiliary parameters and additional information is done for each *in situ* SSS measurement contained in the match-up files as follows :

If t_{insitu} is the time/date at which the *in situ* measurement is performed, we collect:

- The [ASCAT](#) wind speed product of the same day than t_{insitu} found at the ASCAT $1/4^\circ$ grid node with closest distance from the *in situ* data location and the time series of the ASCAT wind speed at the same node for the 10 days prior the *in situ* measurement day.
- If the *in situ* data is located within the 60°N - 60°S band, we select the [CMORPH](#) 3-hourly product the closest in time from t_{insitu} and found at the CMORPH $1/4^\circ$ grid node with closest distance from the *in situ* data location. We then store the time series of the CMORPH rain rate at the same node for the 10 days prior the *in situ* measurement time.

For the given month/year of the *in situ* data, we select the [ISAS](#) and [WOA](#) fields for the same month (and same year for ISAS fields) and take the SSS analysis (monthly mean, std) found at the closest grid node from the *in situ* measurement.

The distance from the *in situ* SSS data location to the nearest coast is evaluated and provided in km. We use a distance-to-coast map at $1/4^\circ$ resolution where small islands have been removed.

When vertical profiles of salinity (S) and temperature (T) are made available from the *in situ* measurements used to build the match-up (Argo or sea mammals), the following variables are included into each satellite/*in situ* match-up file:

1. The vertical distribution of pressure at which the profile were measured,
2. The vertical $S(z)$ and $T(z)$ profiles,
3. The vertical potential density anomaly profile $\sigma_0(z)$,
4. The Mixed Layer Depth (MLD). The MLD is defined here as the depth where the potential density has increased from the reference depth (10 meter) by a threshold equivalent to 0.2°C decrease in temperature at constant salinity: $\sigma_0 = \sigma_{010m} + \Delta\sigma_0$ with $\Delta\sigma_0 = \sigma_0(\theta_{10m} - 0.2, S_{10m}) - \sigma_0(\theta_{10m}, S_{10m})$ where θ_{10m} and S_{10m} are the temperature and salinity at the reference depth (i.e. 10 m) ([de Boyer Montégut et al. \(2004\)](#), [de Boyer Montégut et al. \(2007\)](#)).
5. The Top of the Thermocline Depth (TTD) is defined as the depth at which temperature decreases from its 10 m value by 0.2°C .
6. The Barrier Layer if present, is defined as the intermediate layer between the top of the thermocline and the bottom of the density mixed-layer and its thickness (BLT) is defined as the difference between the MLD and the TTD.
7. The vertical profile of the buoyancy frequency $N^2(z)$

The resulting match-ups files are serialized as NetCDF-4 files whose structure depends on the origin of the *in situ* data they contain and is described in section [2.4.4](#).

2.4.4 Content of the Match-Up NetCDF files

```
netcdf pimep-mdb_smos-l2-v700_argo_TIMEID_v01 {
dimensions:
    N_prof = 944 ;
    N_LEVELS = 499 ;
    N_DAYS_WIND = 10 ;
    N_3H_RAIN = 80 ;
    TIME_Sat = UNLIMITED ; // (1 currently)
variables:
float DATE_ARGO(N_prof) ;
    DATE_ARGO:long_name = "Date of Argo profile" ;
    DATE_ARGO:units = "days since 1990-01-01 00:00:00" ;
    DATE_ARGO:standard_name = "time" ;
    DATE_ARGO:FillValue = -999.f ;
float LATITUDE_ARGO(N_prof) ;
    LATITUDE_ARGO:long_name = "Latitude of Argo profile" ;
    LATITUDE_ARGO:units = "degrees_north" ;
```

```

    LATITUDE_ARGO:valid_min = -90. ;
    LATITUDE_ARGO:valid_max = 90. ;
    LATITUDE_ARGO:standard_name = "latitude" ;
    LATITUDE_ARGO:FillValue = -999.f ;
float LONGITUDE_ARGO(N_prof) ;
    LONGITUDE_ARGO:long_name = "Longitude of Argo profile" ;
    LONGITUDE_ARGO:units = "degrees_east" ;
    LONGITUDE_ARGO:valid_min = -180. ;
    LONGITUDE_ARGO:valid_max = 180. ;
    LONGITUDE_ARGO:standard_name = "longitude" ;
    LONGITUDE_ARGO:FillValue = -999.f ;
float SSS_DEPTH_ARGO(N_prof) ;
    SSS_DEPTH_ARGO:long_name = "Sea water pressure at Argo float location (equals 0 at
sea level)" ;
    SSS_DEPTH_ARGO:units = "decibar" ;
    SSS_DEPTH_ARGO:standard_name = "sea_water_pressure" ;
    SSS_DEPTH_ARGO:FillValue = -999.f ;
float SSS_ARGO(N_prof) ;
    SSS_ARGO:long_name = "Argo SSS" ;
    SSS_ARGO:units = "1" ;
    SSS_ARGO:salinity_scale = "Practical Salinity Scale(PSS-78)" ;
    SSS_ARGO:standard_name = "sea_water_salinity" ;
    SSS_ARGO:FillValue = -999.f ;
float SST_ARGO(N_prof) ;
    SST_ARGO:long_name = "Argo SST" ;
    SST_ARGO:units = "degree Celsius" ;
    SST_ARGO:standard_name = "sea_water_temperature" ;
    SST_ARGO:FillValue = -999.f ;
float DELAYED_MODE_ARGO(N_prof) ;
    DELAYED_MODE_ARGO:long_name = "Argo data mode (delayed mode = 1, real time
=0) " ;
    DELAYED_MODE_ARGO:units = "1" ;
    DELAYED_MODE_ARGO:FillValue = -999.f ;
float DISTANCE_TO_COAST_ARGO(N_prof) ;
    DISTANCE_TO_COAST_ARGO:long_name = "Distance to coasts at Argo float location"
;
    DISTANCE_TO_COAST_ARGO:units = "km" ;
    DISTANCE_TO_COAST_ARGO:FillValue = -999.f ;
float PLATFORM_NUMBER_ARGO(N_prof) ;
    PLATFORM_NUMBER_ARGO:long_name = "Argo float unique identifier" ;
    PLATFORM_NUMBER_ARGO:conventions = "WMO float identifier : A9IIIII" ;
    PLATFORM_NUMBER_ARGO:units = "1" ;
    PLATFORM_NUMBER_ARGO:FillValue = -999.f ;
float PSAL_ARGO(N_prof, N_LEVELS) ;
    PSAL_ARGO:long_name = "Argo salinity profile" ;
    PSAL_ARGO:units = "1" ;
    PSAL_ARGO:salinity_scale = "Practical Salinity Scale (PSS-78)" ;
    PSAL_ARGO:standard_name = "sea_water_salinity" ;
    PSAL_ARGO:FillValue = -999.f ;

```

```

float TEMP_ARGO(N_prof, N_LEVELS) ;
    TEMP_ARGO:long_name = "Argo temperature profile" ;
    TEMP_ARGO:units = "degree Celsius" ;
    TEMP_ARGO:standard_name = "sea_water_temperature" ;
    TEMP_ARGO:FillValue = -999.f ;
float PRES_ARGO(N_prof, N_LEVELS) ;
    PRES_ARGO:long_name = "Argo pressure profile" ;
    PRES_ARGO:units = "decibar" ;
    PRES_ARGO:standard_name = "sea_water_pressure" ;
    PRES_ARGO:FillValue = -999.f ;
float RHO_ARGO(N_prof, N_LEVELS) ;
    RHO_ARGO:long_name = "Argo in-situ density profile" ;
    RHO_ARGO:units = "kg/m" ;
    RHO_ARGO:FillValue = -999.f ;
float SIGMA0_ARGO(N_prof, N_LEVELS) ;
    SIGMA0_ARGO:long_name = "Argo potential density anomaly profile" ;
    SIGMA0_ARGO:units = "kg/m3" ;
    SIGMA0_ARGO:FillValue = -999.f ;
float N2_ARGO(N_prof, N_LEVELS) ;
    N2_ARGO:long_name = "Argo buoyancy frequency profile" ;
    N2_ARGO:units = "1/s2" ;
    N2_ARGO:FillValue = -999.f ;
float MLD_ARGO(N_prof) ;
    MLD_ARGO:long_name = "Mixed Layer Depth (MLD) calculated from Argo profile (depth
    where  $\sigma_0 = \sigma_{010m} + \Delta\sigma_0$  with  $\Delta\sigma_0 = \sigma_0(\theta_{10m} - 0.2, S_{10m}) - \sigma_0(\theta_{10m}, S_{10m})$ )" ;
    MLD_ARGO:units = "m" ;
    MLD_ARGO:FillValue = -999.f ;
float TTD_ARGO(N_prof) ;
    TTD_ARGO:long_name = "Top of Thermocline Depth (TTD) calculated from Argo profile
    (depth where  $\theta = \theta_{10m} - 0.2$ )" ;
    TTD_ARGO:units = "m" ;
    TTD_ARGO:FillValue = -999.f ;
float BLT_ARGO(N_prof) ;
    BLT_ARGO:long_name = "Barrier Layer Thickness (TTD-MLD)" ;
    BLT_ARGO:units = "m" ;
    BLT_ARGO:FillValue = -999.f ;
float DATE_Satellite_product(TIME_Sat) ;
    DATE_Satellite_product:long_name = "Central time of satellite SSS file" ;
    DATE_Satellite_product:units = "days since 1990-01-01 00:00:00" ;
    DATE_Satellite_product:standard_name = "time" ;
float LATITUDE_Satellite_product(N_prof) ;
    LATITUDE_Satellite_product:long_name = "Satellite product latitude at Argo float loca-
    tion" ;
    LATITUDE_Satellite_product:units = "degrees_north" ;
    LATITUDE_Satellite_product:valid_min = -90. ;
    LATITUDE_Satellite_product:valid_max = 90. ;
    LATITUDE_Satellite_product:standard_name = "latitude" ;
    LATITUDE_Satellite_product:FillValue = -999.f ;
float LONGITUDE_Satellite_product(N_prof) ;
    
```



```
LONGITUDE_Satellite_product:long_name = "Satellite product longitude at Argo float location" ;
LONGITUDE_Satellite_product:units = "degrees_east" ;
LONGITUDE_Satellite_product:valid_min = -180. ;
LONGITUDE_Satellite_product:valid_max = 180. ;
LONGITUDE_Satellite_product:standard_name = "longitude" ;
LONGITUDE_Satellite_product:_FillValue = -999.f ;
float SSS_Satellite_product(N_prof) ;
SSS_Satellite_product:long_name = "Satellite product SSS at Argo float location" ;
SSS_Satellite_product:units = "1" ;
SSS_Satellite_product:salinity_scale = "Practical Salinity Scale(PSS-78)" ;
SSS_Satellite_product:standard_name = "sea_surface_salinity" ;
SSS_Satellite_product:_FillValue = -999.f ;
float SST_Satellite_product(N_prof) ;
SST_Satellite_product:long_name = "Satellite product SST at Argo float location" ;
SST_Satellite_product:units = "degree Celsius" ;
SST_Satellite_product:standard_name = "sea_surface_temperature" ;
SST_Satellite_product:_FillValue = -999.f ;
float Spatial_lags(N_prof) ;
Spatial_lags:long_name = "Spatial lag between Argo float location and satellite SSS product pixel center" ;
Spatial_lags:units = "km" ;
Spatial_lags:_FillValue = -999.f ;
float Time_lags(N_prof) ;
Time_lags:long_name = "Temporal lag between Argo float time and satellite SSS product central time" ;
Time_lags:units = "days" ;
Time_lags:_FillValue = -999.f ;
float ROSSBY_RADIUS_at_ARGO(N_prof) ;
ROSSBY_RADIUS_at_ARGO:long_name = "Baroclinic Rossby radius of deformation (Chelton et al., 1998) at Argo float location" ;
ROSSBY_RADIUS_at_ARGO:units = "km" ;
ROSSBY_RADIUS_at_ARGO:_FillValue = -999.f ;
float Ascat_daily_wind_at_ARGO(N_prof) ;
Ascat_daily_wind_at_ARGO:long_name = "Daily Ascat wind speed module at Argo float location" ;
Ascat_daily_wind_at_ARGO:units = "m/s" ;
Ascat_daily_wind_at_ARGO:_FillValue = -999.f ;
float CMORPH_3h_Rain_Rate_at_ARGO(N_prof) ;
CMORPH_3h_Rain_Rate_at_ARGO:long_name = "3-hourly CMORPH rain rate at Argo float location" ;
CMORPH_3h_Rain_Rate_at_ARGO:units = "mm/3h" ;
CMORPH_3h_Rain_Rate_at_ARGO:_FillValue = -999.f ;
float Ascat_10_prior_days_wind_at_ARGO(N_prof, N_DAYS_WIND) ;
Ascat_10_prior_days_wind_at_ARGO:long_name = "Prior 10 days time series of Ascat wind speed module at Argo float location" ;
Ascat_10_prior_days_wind_at_ARGO:units = "m/s" ;
Ascat_10_prior_days_wind_at_ARGO:_FillValue = -999.f ;
float CMORPH_10_prior_days_Rain_Rate_at_ARGO(N_prof, N_3H_RAIN) ;
```



```

        CMORPH_10_prior_days_Rain_Rate_at_ARGO:long_name = "Prior 10 days times series of
        3-hourly CMORPH Rain Rate at Argo float location" ;
        CMORPH_10_prior_days_Rain_Rate_at_ARGO:units = "mm/3h" ;
        CMORPH_10_prior_days_Rain_Rate_at_ARGO:FillValue = -999.f ;
float SSS_ISAS_at_ARGO(N_prof) ;
        SSS_ISAS_at_ARGO:long_name = "ISAS SSS (5m depth) at Argo float location" ;
        SSS_ISAS_at_ARGO:units = "1" ;
        SSS_ISAS_at_ARGO:salinity_scale = "Practical Salinity Scale(PSS-78)" ;
        SSS_ISAS_at_ARGO:standard_name = "sea_water_salinity" ;
        SSS_ISAS_at_ARGO:FillValue = -999.f ;
float SSS_PCTVAR_ISAS_at_ARGO(N_prof) ;
        SSS_PCTVAR_ISAS_at_ARGO:long_name = "Error on ISAS SSS (5m depth) at Argo float
        location (% variance)" ;
        SSS_PCTVAR_ISAS_at_ARGO:units = "%" ;
        SSS_PCTVAR_ISAS_at_ARGO:FillValue = -999.f ;
float SSS_WOA13_at_ARGO(N_prof) ;
        SSS_WOA13_at_ARGO:long_name = "WOA 2013 (DECAV-1deg) SSS (0m depth) at Argo
        float location" ;
        SSS_WOA13_at_ARGO:units = "1" ;
        SSS_WOA13_at_ARGO:salinity_scale = "Practical Salinity Scale(PSS-78)" ;
        SSS_WOA13_at_ARGO:standard_name = "sea_surface_salinity" ;
        SSS_WOA13_at_ARGO:FillValue = -999.f ;
float SSS_STD_WOA13_at_ARGO(N_prof) ;
        SSS_STD_WOA13_at_ARGO:long_name = "WOA 2013 (DECAV-1deg) SSS STD (0m depth)
        at Argo float location " ;
        SSS_STD_WOA13_at_ARGO:units = "1" ;
        SSS_STD_WOA13_at_ARGO:FillValue = -999.f ;
float SSS_ISAS15_at_ARGO(N_prof) ;
        SSS_ISAS15_at_ARGO:long_name = "Monthly ISAS-15 SSS (5m depth) at Argo float loca-
        tion" ;
        SSS_ISAS15_at_ARGO:units = "1" ;
        SSS_ISAS15_at_ARGO:salinity_scale = "Practical Salinity Scale (PSS-78)" ;
        SSS_ISAS15_at_ARGO:standard_name = "sea_water_salinity" ;
        SSS_ISAS15_at_ARGO:FillValue = -999.f ;
float SSS_PCTVAR_ISAS15_at_ARGO(N_prof) ;
        SSS_PCTVAR_ISAS15_at_ARGO:long_name = "Error on monthly ISAS-15 SSS (5m depth)
        at Argo float location (% variance)" ;
        SSS_PCTVAR_ISAS15_at_ARGO:units = "%" ;
        SSS_PCTVAR_ISAS15_at_ARGO:FillValue = -999.f ;
float SSS_WOA18_at_ARGO(N_prof) ;
        SSS_WOA18_at_ARGO:long_name = "Monthly WOA 2018 (DECAV-1deg) SSS (0m depth)
        at Argo float location" ;
        SSS_WOA18_at_ARGO:units = "1" ;
        SSS_WOA18_at_ARGO:salinity_scale = "Practical Salinity Scale (PSS-78)" ;
        SSS_WOA18_at_ARGO:standard_name = "sea_surface_salinity" ;
        SSS_WOA18_at_ARGO:FillValue = -999.f ;
float SSS_STD_WOA18_at_ARGO(N_prof) ;
        SSS_STD_WOA18_at_ARGO:long_name = "Monthly WOA 2018 (DECAV-1deg) SSS STD
        (0m depth) at Argo float location " ;
    
```

```
SSS_STD_WOA18_at_ARGO:units = "1" ;
SSS_STD_WOA18_at_ARGO:FillValue = -999.f ;
float SEA_ICE_CONCENTRATION_at_ARGO(N_prof) ;
SEA_ICE_CONCENTRATION_at_ARGO:long_name = "Daily sea ice area fraction (EU-
METSAT OSI-SAF OSI-450) at Argo float location (%)" ;
SEA_ICE_CONCENTRATION_at_ARGO:units = "1" ;
SEA_ICE_CONCENTRATION_at_ARGO:standard_name = "sea_ice_area_fraction" ;
SEA_ICE_CONCENTRATION_at_ARGO:FillValue = -999.f ;
float CCMP_6h_Wind_Speed_at_ARGO(N_prof) ;
CCMP_6h_Wind_Speed_at_ARGO:long_name = "6-hourly CCMP wind speed at Argo float
location" ;
CCMP_6h_Wind_Speed_at_ARGO:units = "m s-1" ;
CCMP_6h_Wind_Speed_at_ARGO:standard_name = "wind_speed" ;
CCMP_6h_Wind_Speed_at_ARGO:FillValue = -999.f ;
float CCMP_10_prior_days_Wind_Speed_at_ARGO(N_prof, N_DAYS_WIND_CCMP) ;
CCMP_10_prior_days_Wind_Speed_at_ARGO:long_name = "Prior 10 days time series of
CCMP wind speed at Argo float location" ;
CCMP_10_prior_days_Wind_Speed_at_ARGO:units = "m s-1" ;
CCMP_10_prior_days_Wind_Speed_at_ARGO:standard_name = "wind_speed" ;
CCMP_10_prior_days_Wind_Speed_at_ARGO:FillValue = -999.f ;
float CDM_GLOBCOLOUR_at_ARGO(N_prof) ;
CDM_GLOBCOLOUR_at_ARGO:long_name = "8-day Coloured dissolved and detrital or-
ganic materials - mean of the binned pixels at Argo float location" ;
CDM_GLOBCOLOUR_at_ARGO:units = "m-1" ;
CDM_GLOBCOLOUR_at_ARGO:standard_name = "volume_absorption_coefficient_of_radiative_flux_in_sea_wate
;
CDM_GLOBCOLOUR_at_ARGO:FillValue = -999.f ;
float CHL1_GLOBCOLOUR_at_ARGO(N_prof) ;
CHL1_GLOBCOLOUR_at_ARGO:long_name = "8-day Chlorophyll concentration - mean
of the binned pixels at Argo float location" ;
CHL1_GLOBCOLOUR_at_ARGO:units = "mg m-3" ;
CHL1_GLOBCOLOUR_at_ARGO:standard_name = "mass_concentration_of_chlorophyll_a_in_sea_water"
;
CHL1_GLOBCOLOUR_at_ARGO:FillValue = -999.f ;
float EVAPORATION_OAFLUX_at_ARGO(N_prof) ;
EVAPORATION_OAFLUX_at_ARGO:long_name = "Daily mean evaporation rate (OAFlux)
at Argo float location" ;
EVAPORATION_OAFLUX_at_ARGO:units = "cm year-1" ;
EVAPORATION_OAFLUX_at_ARGO:FillValue = -999.f ;
float SSS_SCRIPPS_at_ARGO(N_prof) ;
SSS_SCRIPPS_at_ARGO:long_name = "Argo gridded monthly mean SSS (0m depth) from
SCRIPPS (Roemmich-Gilson) at Argo float location" ;
SSS_SCRIPPS_at_ARGO:units = "1" ;
SSS_SCRIPPS_at_ARGO:salinity_scale = "Practical Salinity Scale (PSS-78)" ;
SSS_SCRIPPS_at_ARGO:standard_name = "sea_water_salinity" ;
SSS_SCRIPPS_at_ARGO:FillValue = -999.f ;
float SSS_IPRC_at_ARGO(N_prof) ;
SSS_IPRC_at_ARGO:long_name = "Argo gridded monthly mean SSS (0m depth) from
IPRC at Argo float location" ;
```

```

SSS_IPRC_at_ARGO:units = "1" ;
SSS_IPRC_at_ARGO:salinity_scale = "Practical Salinity Scale (PSS-78)" ;
SSS_IPRC_at_ARGO:standard_name = "sea_water_salinity" ;
SSS_IPRC_at_ARGO:FillValue = -999.f ;
float SST_AVHRR_at_ARGO(N_prof) ;
    SST_AVHRR_at_ARGO:long_name = "Daily OI AVHRR-only v2 SST (Reynolds et al.,
2007) at Argo float location" ;
    SST_AVHRR_at_ARGO:units = "degree Celsius" ;
    SST_AVHRR_at_ARGO:standard_name = "sea_water_temperature" ;
    SST_AVHRR_at_ARGO:FillValue = -999.f ;
float U_EKMAN_GLOBCURRENT_at_ARGO(N_prof) ;
    U_EKMAN_GLOBCURRENT_at_ARGO:long_name = "15m depth Ekman current veloc-
ity: zonal component at Argo float location" ;
    U_EKMAN_GLOBCURRENT_at_ARGO:units = "m s-1" ;
    U_EKMAN_GLOBCURRENT_at_ARGO:FillValue = -999.f ;
float V_EKMAN_GLOBCURRENT_at_ARGO(N_prof) ;
    V_EKMAN_GLOBCURRENT_at_ARGO:long_name = "15m depth Ekman current veloc-
ity: meridian component at Argo float location" ;
    V_EKMAN_GLOBCURRENT_at_ARGO:units = "m s-1" ;
    V_EKMAN_GLOBCURRENT_at_ARGO:FillValue = -999.f ;
float U_GEOSTROPHIC_GLOBCURRENT_at_ARGO(N_prof) ;
    U_GEOSTROPHIC_GLOBCURRENT_at_ARGO:long_name = "Absolute geostrophic ve-
locity: zonal component at Argo float location" ;
    U_GEOSTROPHIC_GLOBCURRENT_at_ARGO:units = "m s-1" ;
    U_GEOSTROPHIC_GLOBCURRENT_at_ARGO:FillValue = -999.f ;
float V_GEOSTROPHIC_GLOBCURRENT_at_ARGO(N_prof) ;
    V_GEOSTROPHIC_GLOBCURRENT_at_ARGO:long_name = "Absolute geostrophic ve-
locity: meridian component at Argo float location" ;
    V_GEOSTROPHIC_GLOBCURRENT_at_ARGO:units = "m s-1" ;
    V_GEOSTROPHIC_GLOBCURRENT_at_ARGO:FillValue = -999.f ;

// global attributes:
:Conventions = "CF-1.6" ;
:title = "ARGO Match-Up Database" ;
:Satellite_product_name = "SMOS SSS L2 v700 (ESA)" ;
:Satellite_product_spatial_resolution = "30 km" ;
:Satellite_product_temporal_resolution = "50 min" ;
:Satellite_product_filename = "netcdf/2010/04/13/SM_REPR_MIR_OSUDP2_20100413T000004_20100413T000845_700_100_1.nc"
;

:Match-Up_spatial_window_radius_in_km = 25;
:Match-Up_temporal_window_radius_in_days = 0.5;
:start_time = "20100114T000005Z" ;
:stop_time = "20100118T235026Z" ;
:northernmost_latitude = 77.676f ;
:southernmost_latitude = -66.423f ;
:westernmost_longitude = -179.219f ;
:easternmost_longitude = 179.199f ;
:geospatial_lat_units = "degrees north" ;
:geospatial_lat_resolution = "30 km" ;
    
```

```

:geospatial_lon_units = "degrees east" ;
:geospatial_lon_resolution = "30 km" ;
:institution = "ESA-IFREMER-ODL-OCEANSCOPE" ;
:project_name = "SMOS Pilot-Mission Exploitation Platform (Pi-MEP) for salinity" ;
:project_url = "https://www.salinity-pimep.org" ;
:license = "Pi-MEP data use is free and open" ;
:product_version = "1.0" ;
:keywords = "Oceans > Ocean Salinity > Sea Surface Salinity" ;
:acknowledgment = "Please acknowledge the use of these data with the following statement: These data were provided by the SMOS Pilot-Mission Exploitation Platform (Pi-MEP) for salinity" ;
:source = "netcdf/2010/04/13/SM_REPR_MIR_OSUDP2_20100413T000004_20100413T000845_700_100_1.nc" ;
:in_situ_data_source = "ftp://ftp.ifremer.fr/ifremer/argo/geo/" ;
:references = "https://www.salinity-pimep.org" ;
:history = "Processed on 2018-04-18 using MDB-generator" ;
:date_created = "2018-04-18 17:09:30" ;
}
    
```

2.5 MDB characteristics for the particular *in situ*/satellite pairs

2.5.1 Number of paired SSS data as a function of time and distance to coast

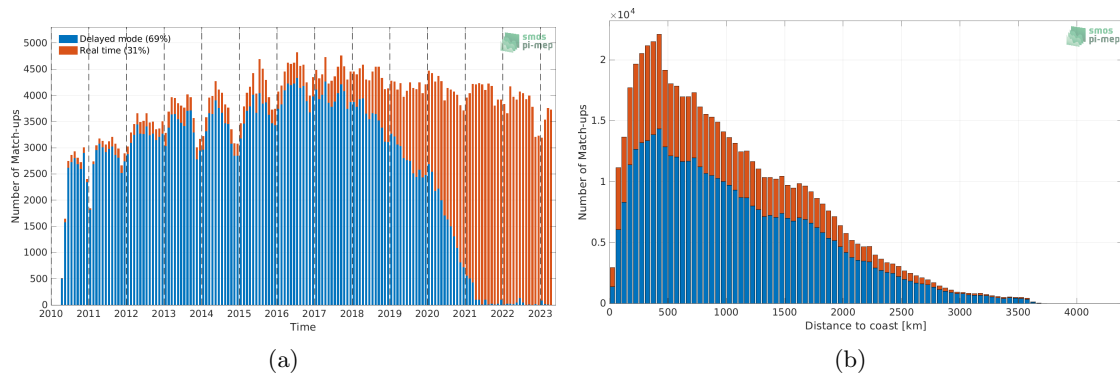


Figure 1: Number of match-ups between Argo and SMOS SSS L2 v700 (ESA) SSS as a function of time (a) and as function of the distance to coast (b) over the Global Ocean Pi-MEP region and for the full satellite product period.

2.5.2 Histograms of the SSS match-ups

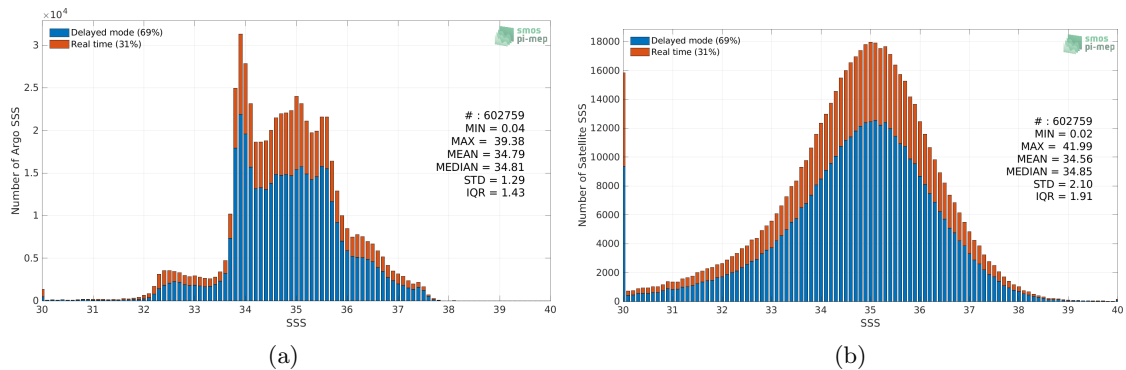


Figure 2: Histograms of SSS from Argo (a) and SMOS SSS L2 v700 (ESA) (b) considering all match-up pairs per bins of 0.1 over the Global Ocean Pi-MEP region and for the full satellite product period.

2.5.3 Distribution of *in situ* SSS depth measurements

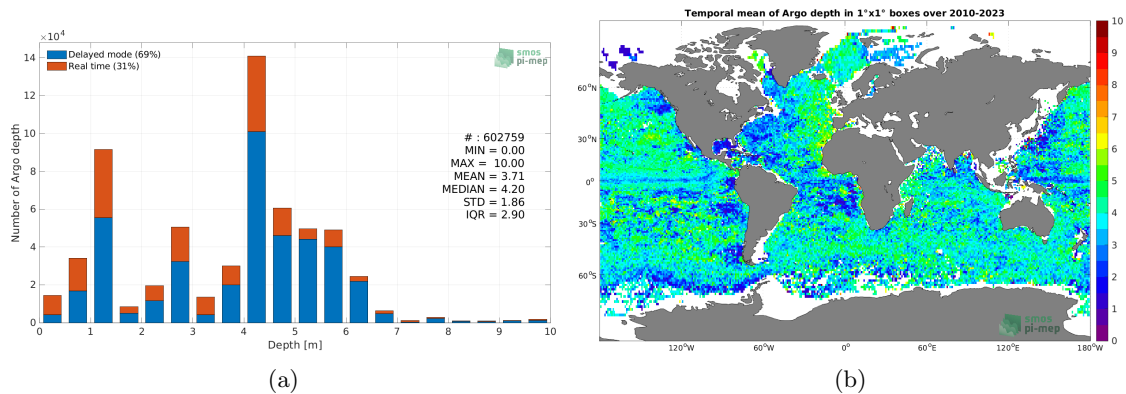


Figure 3: Histograms of the depth of the upper level SSS measurements from Argo in the Match-up DataBase for the Global Ocean Pi-MEP region (a) and temporal mean spatial distribution of pressure of the *in situ* SSS data over $1^\circ \times 1^\circ$ boxes and for the full satellite product period (b).

2.5.4 Spatial Distribution of Match-ups

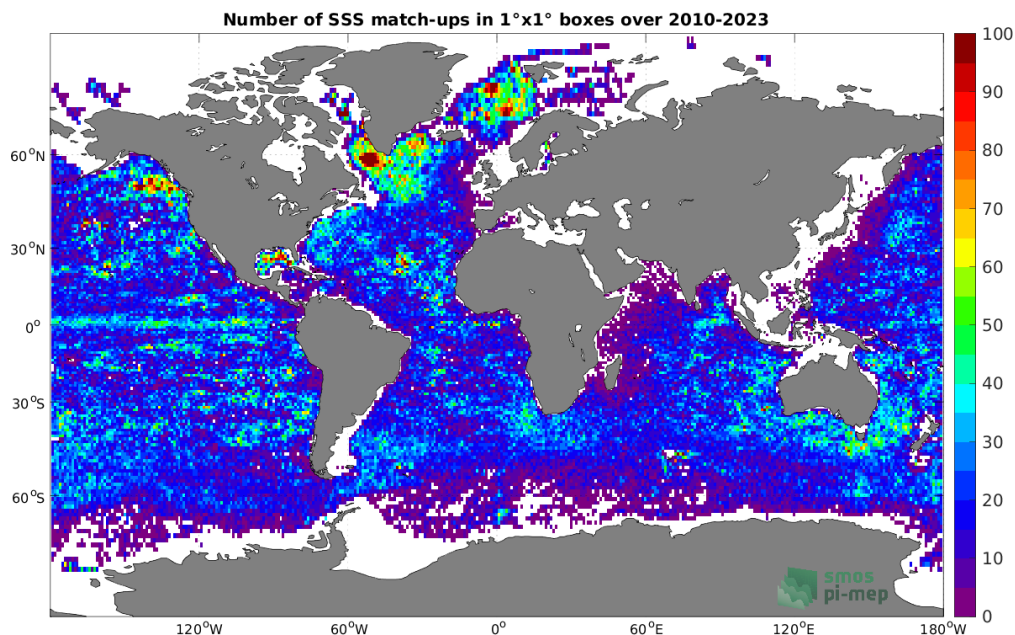


Figure 4: Number of SSS match-ups between Argo SSS and the SMOS SSS L2 v700 (ESA) SSS product for the Global Ocean Pi-MEP region over $1^\circ \times 1^\circ$ boxes and for the full satellite product period.

2.5.5 Histograms of the spatial and temporal lags of the match-ups pairs

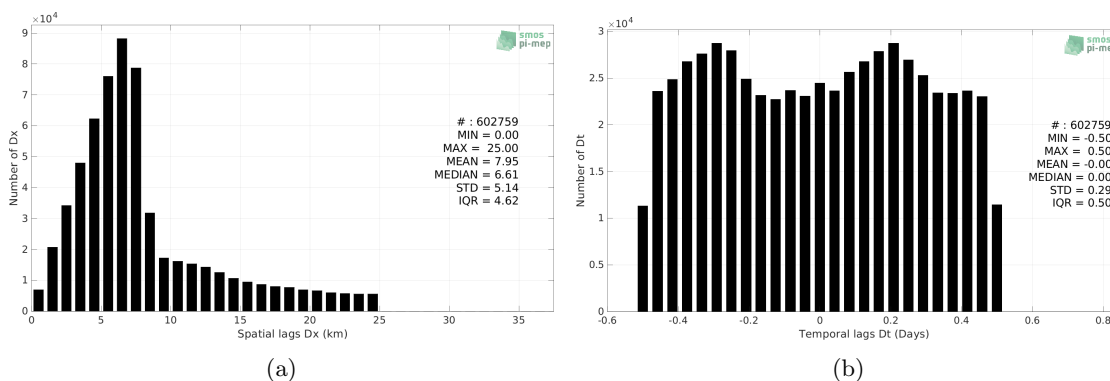


Figure 5: Histograms of the spatial (a) and temporal (b) lags between the time of the Argo measurements and the date of the corresponding SMOS SSS L2 v700 (ESA) SSS product.

3 MDB file Analyses

3.1 Spatial Maps of the Temporal mean and Std of *in situ* and satellite SSS and of the difference (Δ SSS)

3.1.1 Ascending and Descending orbits

In Figure 6, we show maps of temporal mean (left) and standard deviation (right) of the SMOS SSS L2 v700 (ESA) (top) and of the Argo *in situ* dataset at the collected Pi-MEP match-up pairs. The temporal mean and std are gridded over the full satellite product period and over spatial boxes of size $1^\circ \times 1^\circ$.

At the bottom of Figure 6, the temporal mean (left) and standard deviation (right) of the differences between the satellite SSS product and *in situ* data found at match-up pairs, namely Δ SSS(Satellite -Argo), is also gridded over the full satellite product period and over spatial boxes of size $1^\circ \times 1^\circ$.

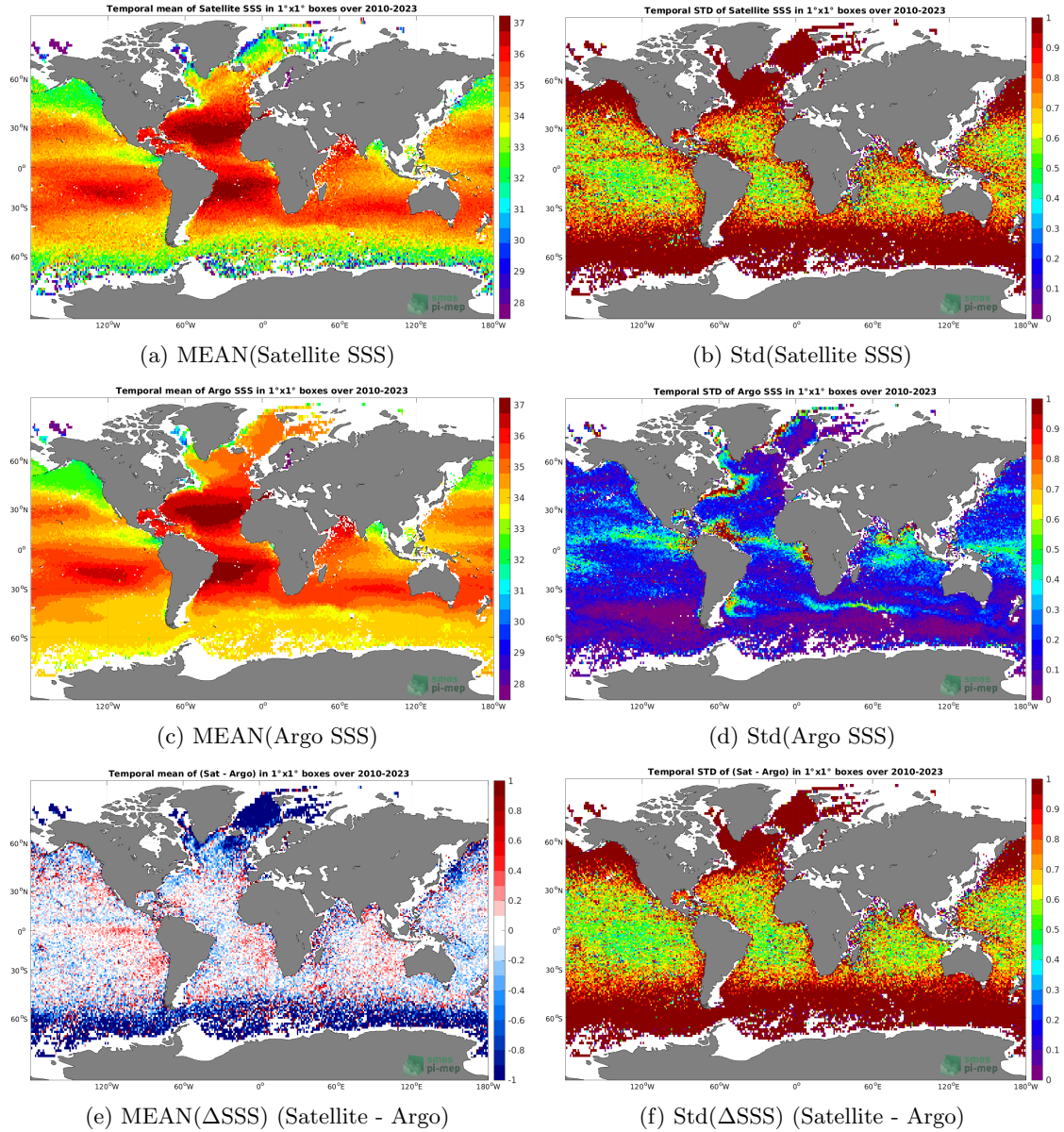


Figure 6: Temporal mean (left) and Std (right) of SSS from SMOS SSS L2 v700 (ESA) (top), Argo (middle), and of Δ SSS (Satellite - Argo). Only match-up pairs are used to generate these maps.

3.1.2 Ascending orbits

In Figure 7, we show maps of temporal mean (left) and standard deviation (right) of the SMOS SSS L2 v700 (ESA) (top) and of the Argo *in situ* dataset at the collected Pi-MEP match-up pairs. The temporal mean and std are gridded over the full satellite product period and over spatial boxes of size $1^\circ \times 1^\circ$.

At the bottom of Figure 7, the temporal mean (left) and standard deviation (right) of the differences between the satellite SSS product and *in situ* data found at match-up pairs, namely

Δ SSS(Satellite -Argo), is also gridded over the full satellite product period and over spatial boxes of size $1^\circ \times 1^\circ$.

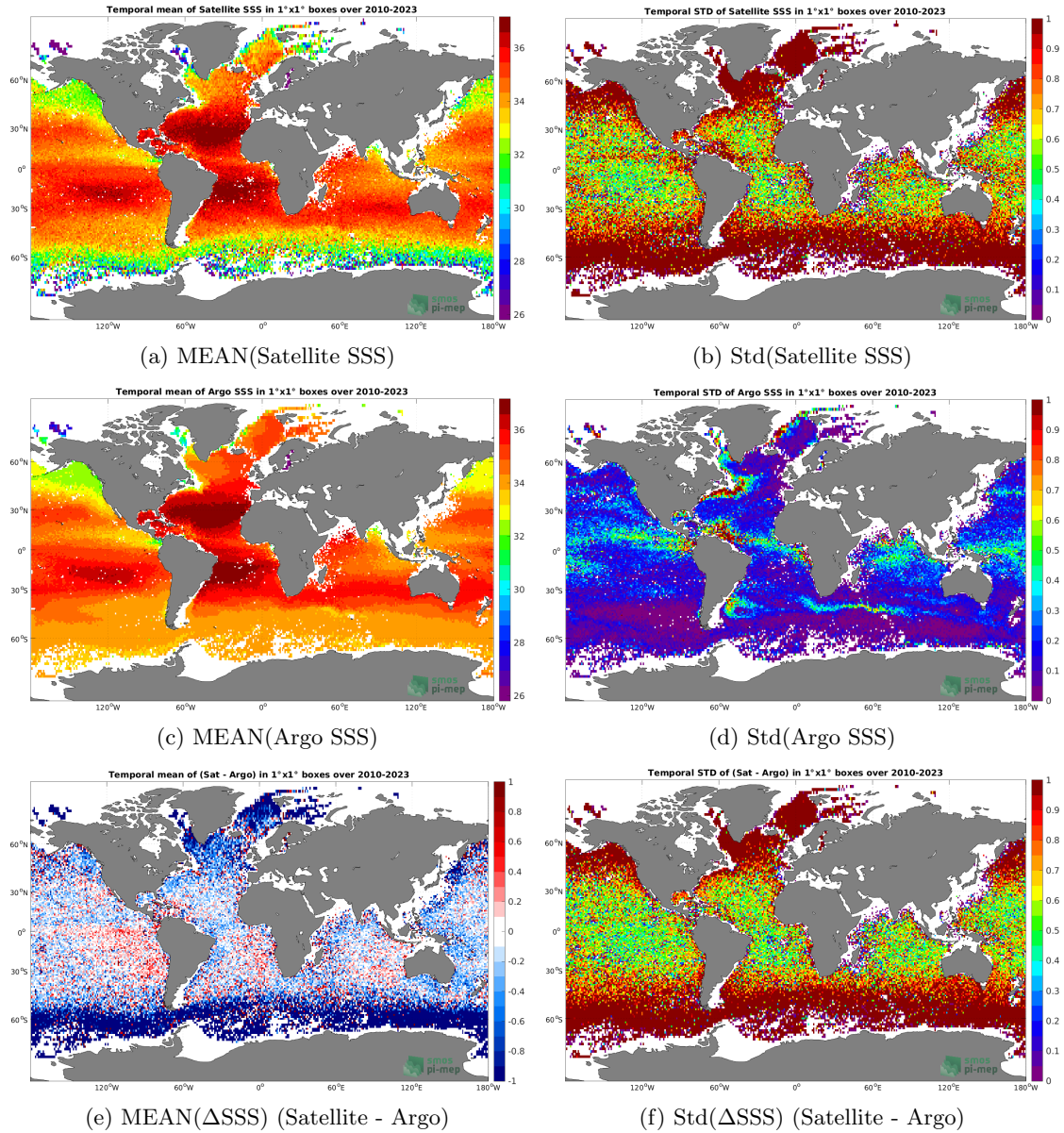


Figure 7: Temporal mean (left) and Std (right) of SSS from SMOS SSS L2 v700 (ESA) (top), Argo (middle), and of Δ SSS (Satellite - Argo). Only match-up pairs and ascending orbits are used to generate these maps.

3.1.3 Descending orbits

In Figure 8, we show maps of temporal mean (left) and standard deviation (right) of the SMOS SSS L2 v700 (ESA) (top) and of the Argo *in situ* dataset at the collected Pi-MEP match-up pairs. The temporal mean and std are gridded over the full satellite product period and over

spatial boxes of size $1^\circ \times 1^\circ$.

At the bottom of Figure 8, the temporal mean (left) and standard deviation (right) of the differences between the satellite SSS product and *in situ* data found at match-up pairs, namely $\Delta\text{SSS}(\text{Satellite} - \text{Argo})$, is also gridded over the full satellite product period and over spatial boxes of size $1^\circ \times 1^\circ$.

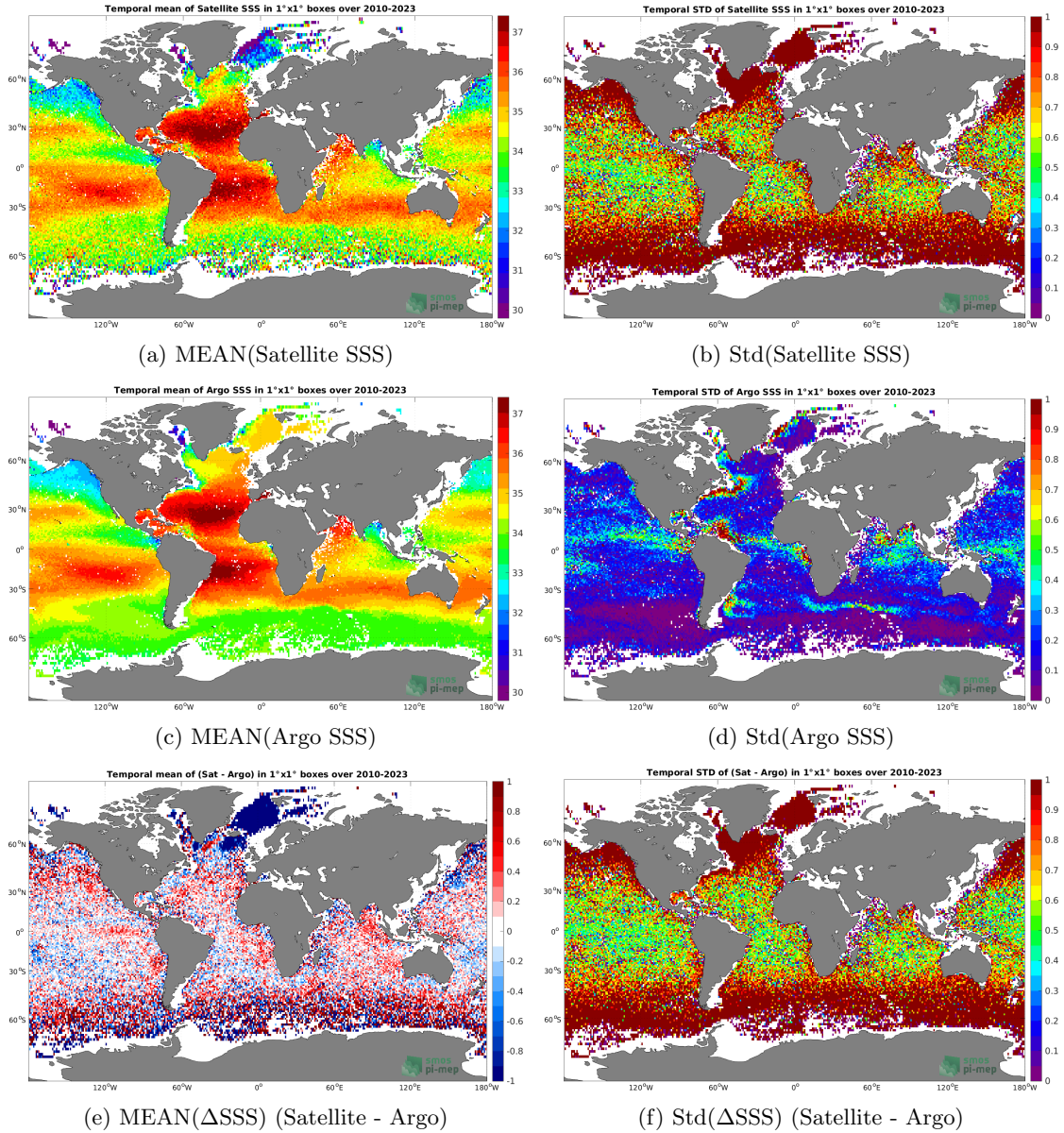


Figure 8: Temporal mean (left) and Std (right) of SSS from SMOS SSS L2 v700 (ESA) (top), Argo (middle), and of ΔSSS (Satellite - Argo). Only match-up pairs and descending orbits are used to generate these maps.

3.2 Time series of the monthly median and Std of *in situ* and satellite SSS and of the (Δ SSS)

3.2.1 Ascending and Descending orbits

In the top panel of Figure 9, we show the time series of the monthly median SSS estimated over the full Global Ocean Pi-MEP region for both SMOS SSS L2 v700 (ESA) satellite SSS product (in black) and the Argo *in situ* dataset (in blue) at the collected Pi-MEP match-up pairs.

In the middle panel of Figure 9, we show the time series of the monthly median of Δ SSS (Satellite - Argo) for the collected Pi-MEP match-up pairs and estimated over the full Global Ocean Pi-MEP region.

In the bottom panel of Figure 9, we show the time series of the monthly standard deviation of the Δ SSS (Satellite - Argo) for the collected Pi-MEP match-up pairs and estimated over the full Global Ocean Pi-MEP region.

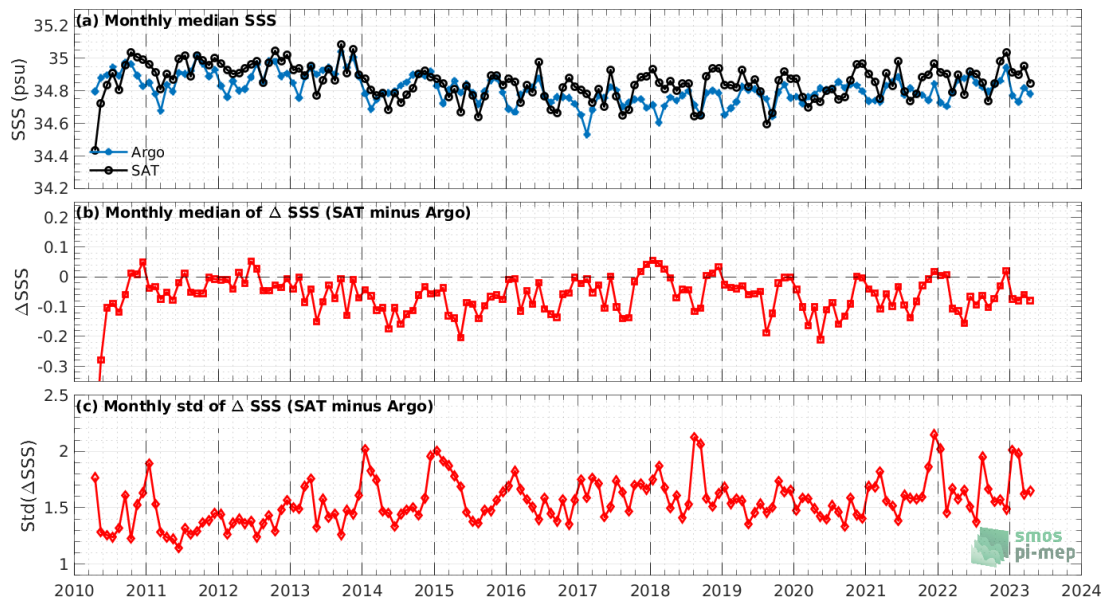


Figure 9: Time series of the monthly median SSS (top), median of Δ SSS (Satellite - Argo) and Std of Δ SSS (Satellite - Argo) over the Global Ocean Pi-MEP region considering all match-ups collected by the Pi-MEP.

3.2.2 Ascending orbits

In the top panel of Figure 10, we show the time series of the monthly median SSS estimated over the full Global Ocean Pi-MEP region for both SMOS SSS L2 v700 (ESA) satellite SSS product (in black) and the Argo *in situ* dataset (in blue) at the collected Pi-MEP match-up pairs.

In the middle panel of Figure 10, we show the time series of the monthly median of Δ SSS (Satellite - Argo) for the collected Pi-MEP match-up pairs and estimated over the full Global Ocean Pi-MEP region.

In the bottom panel of Figure 10, we show the time series of the monthly standard deviation of the Δ SSS (Satellite - Argo) for the collected Pi-MEP match-up pairs and estimated over the full Global Ocean Pi-MEP region.

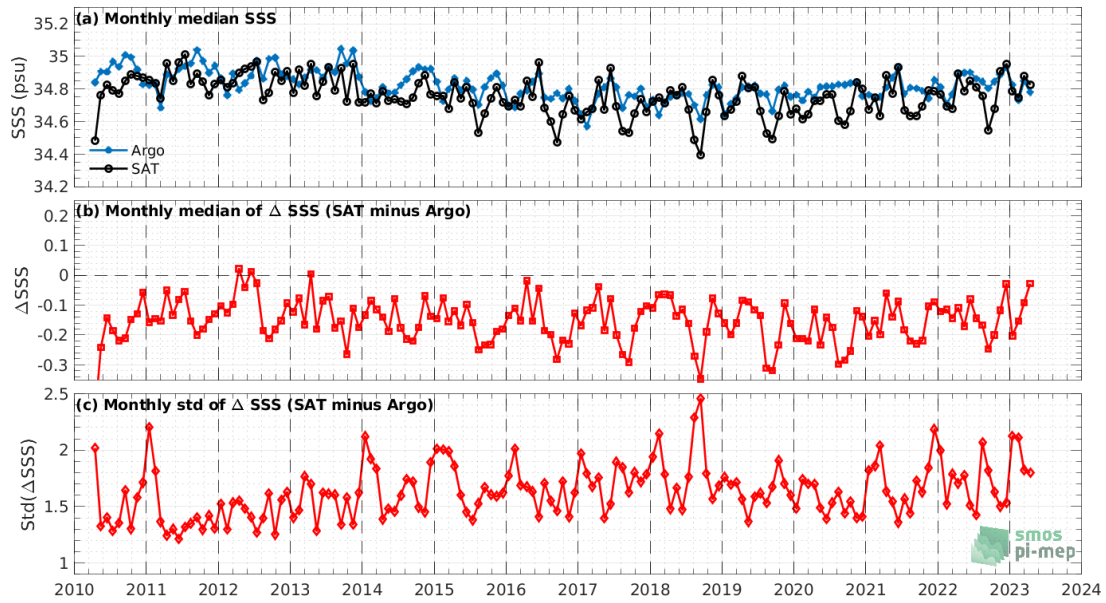


Figure 10: Time series of the monthly median SSS (top), median of Δ SSS (Satellite - Argo) and Std of Δ SSS (Satellite - Argo) over the Global Ocean Pi-MEP region considering only ascending orbits from all match-ups collected by the Pi-MEP.

3.2.3 Descending orbits

In the top panel of Figure 11, we show the time series of the monthly median SSS estimated over the full Global Ocean Pi-MEP region for both SMOS SSS L2 v700 (ESA) satellite SSS product (in black) and the Argo *in situ* dataset (in blue) at the collected Pi-MEP match-up pairs.

In the middle panel of Figure 11, we show the time series of the monthly median of Δ SSS (Satellite - Argo) for the collected Pi-MEP match-up pairs and estimated over the full Global Ocean Pi-MEP region.

In the bottom panel of Figure 11, we show the time series of the monthly standard deviation of the Δ SSS (Satellite - Argo) for the collected Pi-MEP match-up pairs and estimated over the full Global Ocean Pi-MEP region.

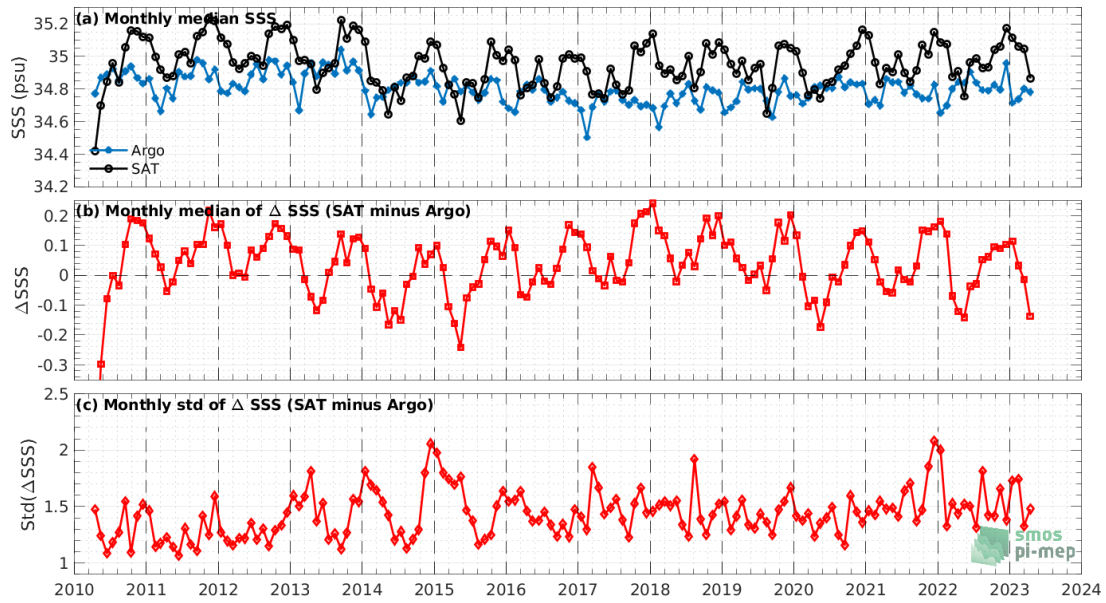


Figure 11: Time series of the monthly median SSS (top), median of Δ SSS (Satellite - Argo) and Std of Δ SSS (Satellite - Argo) over the Global Ocean Pi-MEP region considering only descending orbits from all match-ups collected by the Pi-MEP.

3.3 Zonal mean and Std of *in situ* and satellite SSS and of the Δ SSS

3.3.1 Ascending and Descending orbits

In Figure 12 left panel, we show the zonal mean SSS considering all Pi-MEP match-up pairs for both SMOS SSS L2 v700 (ESA) satellite SSS product (in black) and the Argo *in situ* dataset (in blue). Solid lines and dashed lines correspond to the use of the full satellite SSS product period and the last month of data, respectively, to derive the mean.

In the right panel of Figure 12, we show the zonal mean of Δ SSS (Satellite - Argo) for all the collected Pi-MEP match-up pairs estimated over the full satellite product period (solid line) and the last month of data (dashed line).

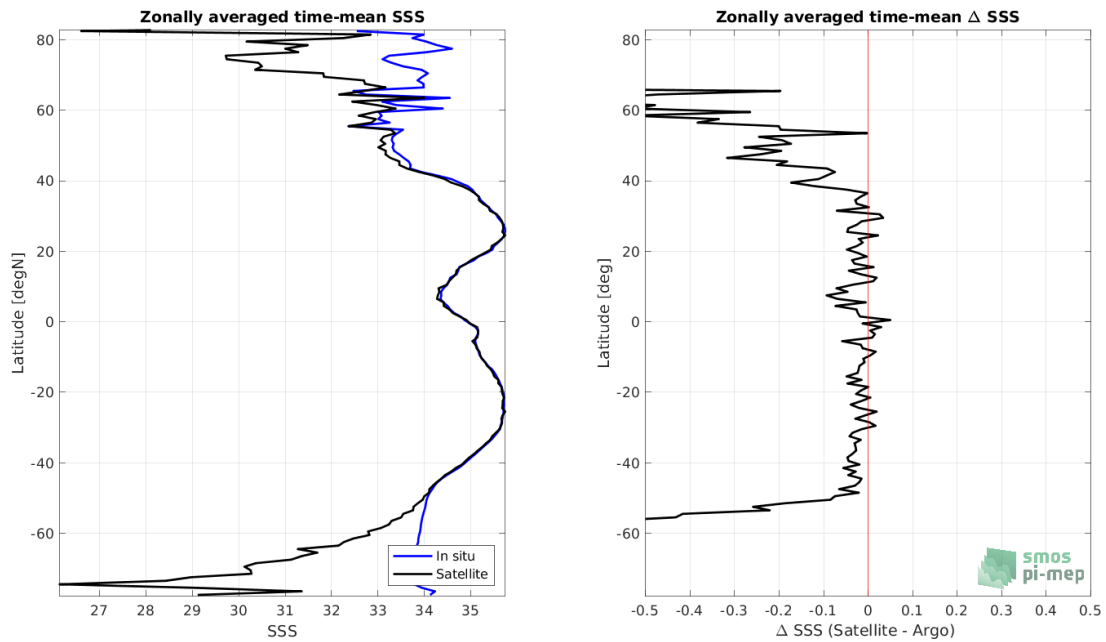


Figure 12: Left panel: Zonal mean SSS from SMOS SSS L2 v700 (ESA) (black) and from Argo (blue). Right panel: Zonal mean of Δ SSS (Satellite - Argo) for all the collected Pi-MEP match-up pairs estimated over the full satellite product period.

3.3.2 Ascending orbits

In Figure 13 left panel, we show the zonal mean SSS considering only ascending orbits from all Pi-MEP match-up pairs for both SMOS SSS L2 v700 (ESA) satellite SSS product (in black) and the Argo *in situ* dataset (in blue). Solid lines and dashed lines correspond to the use of the full satellite SSS product period and the last month of data, respectively, to derive the mean.

In the right panel of Figure 13, we show the zonal mean of Δ SSS (Satellite - Argo) considering only ascending orbits from all the collected Pi-MEP match-up pairs estimated over the full satellite product period (solid line) and the last month of data (dashed line).

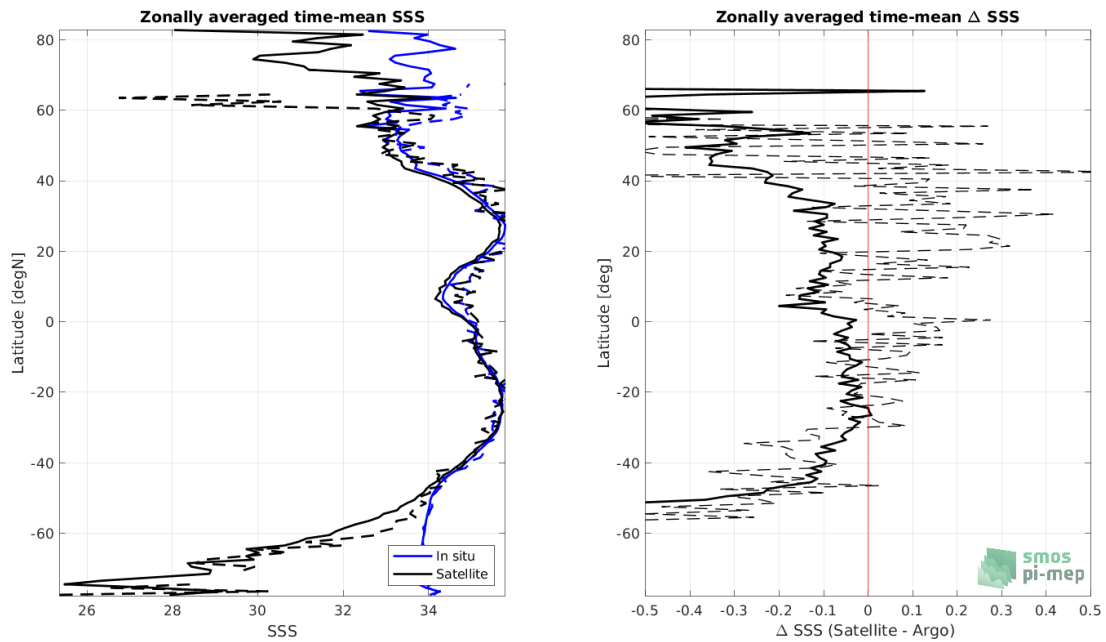


Figure 13: Left panel: Zonal mean SSS from SMOS SSS L2 v700 (ESA) satellite product (black) and from Argo (blue). Right panel: Zonal mean of Δ SSS (Satellite - Argo) considering only ascending orbits from all the collected Pi-MEP match-up pairs estimated over the full satellite product period. The dash curves correspond to the same estimates but considering only the last month of data.

3.3.3 Decending orbits

In Figure 14 left panel, we show the zonal mean SSS considering only decending orbits from all Pi-MEP match-up pairs for both SMOS SSS L2 v700 (ESA) satellite SSS product (in black) and the Argo *in situ* dataset (in blue). Solid lines and dashed lines correspond to the use of the full satellite SSS product period and the last month of data, respectively, to derive the mean.

In the right panel of Figure 14, we show the zonal mean of Δ SSS (Satellite - Argo) considering only decending orbits from all the collected Pi-MEP match-up pairs estimated over the full satellite product period (solid line) and the last month of data (dashed line).

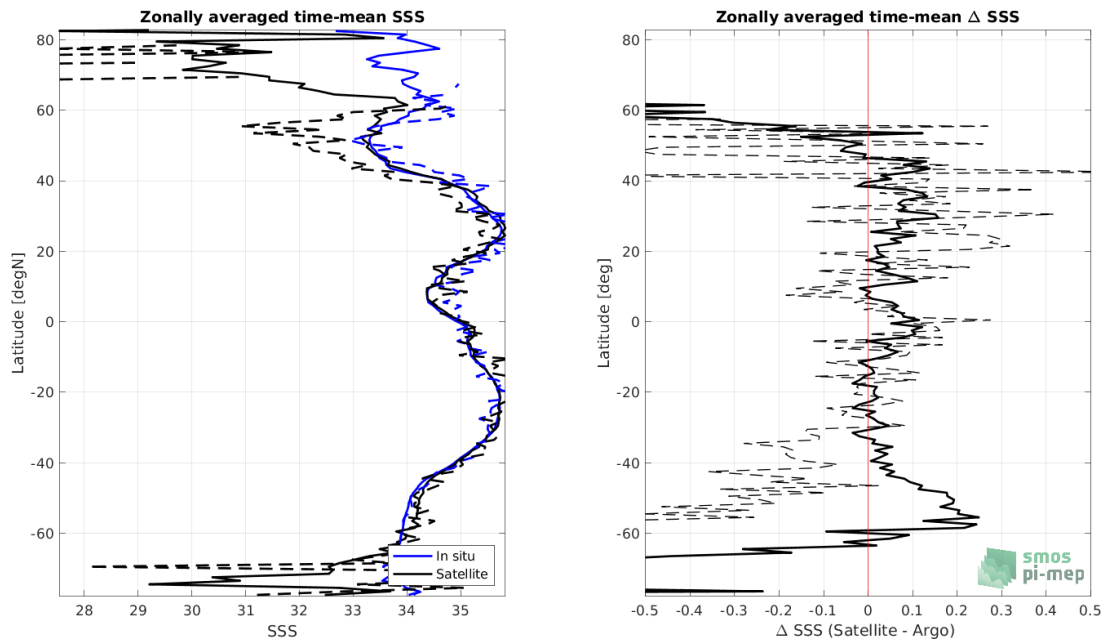


Figure 14: Left panel: Zonal mean SSS from SMOS SSS L2 v700 (ESA) satellite product (black) and from Argo (blue). Right panel: Zonal mean of Δ SSS (Satellite - Argo) considering only descending orbits from all the collected Pi-MEP match-up pairs estimated over the full satellite product period. The dash curves correspond to the same estimates but considering only the last month of data.

3.4 Scatterplots of satellite vs *in situ* SSS by latitudinal bands

For Figures 15, 16 and 17, we use only the last month of match-up pairs.

3.4.1 Ascending and Descending orbits

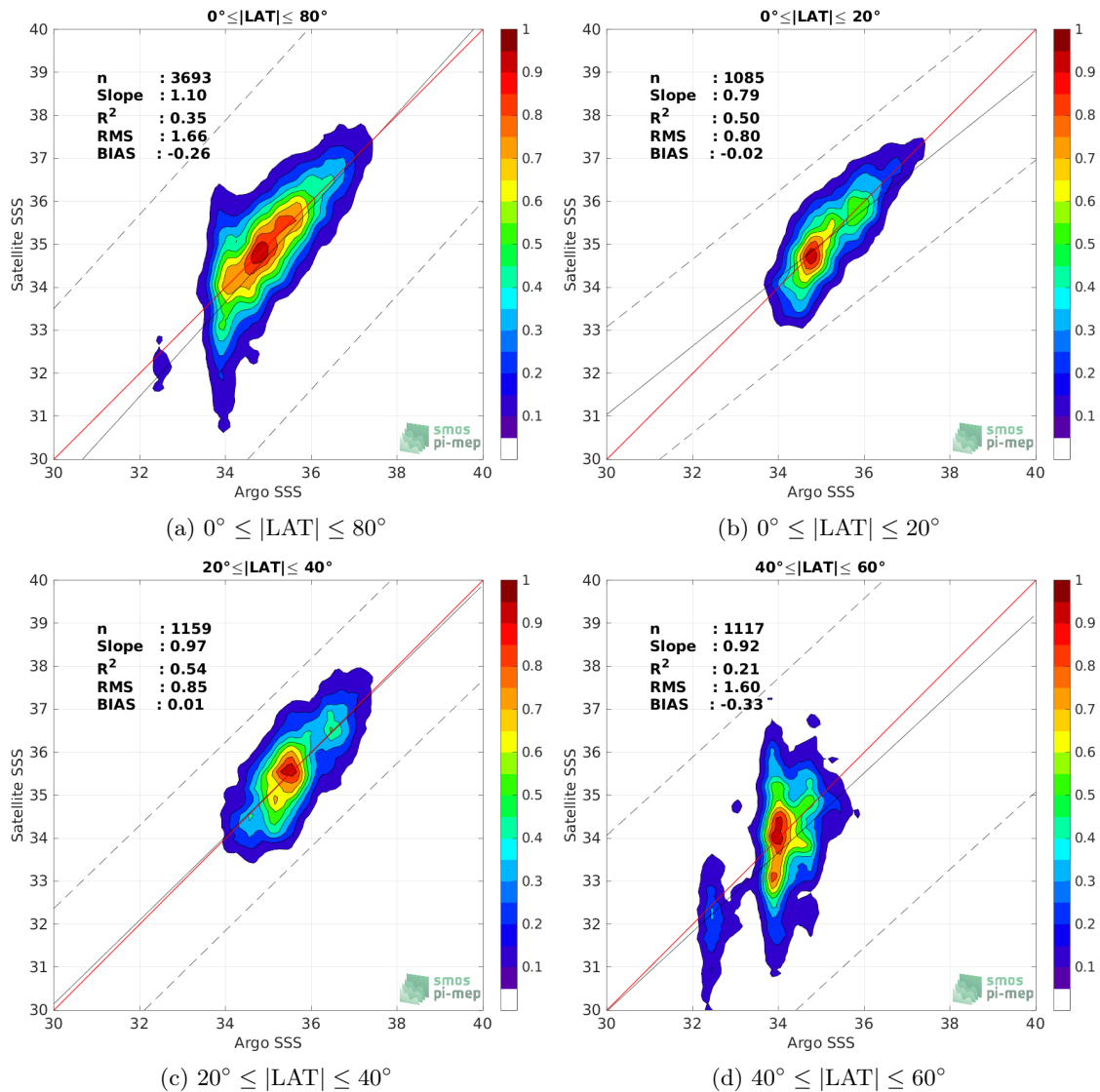


Figure 15: Contour maps of the concentration of SMOS SSS L2 v700 (ESA) SSS (y-axis) versus Argo SSS (x-axis) at match-up pairs for different latitude bands. For each plot, the red line shows $x=y$. The black thin and dashed lines indicate a linear fit through the data cloud and the $\pm 95\%$ confidence levels, respectively. The number match-up pairs n , the slope and R^2 coefficient of the linear fit, the root mean square (RMS) and the mean bias between satellite and *in situ* data are indicated for each latitude band in each plots.

3.4.2 Ascending orbits

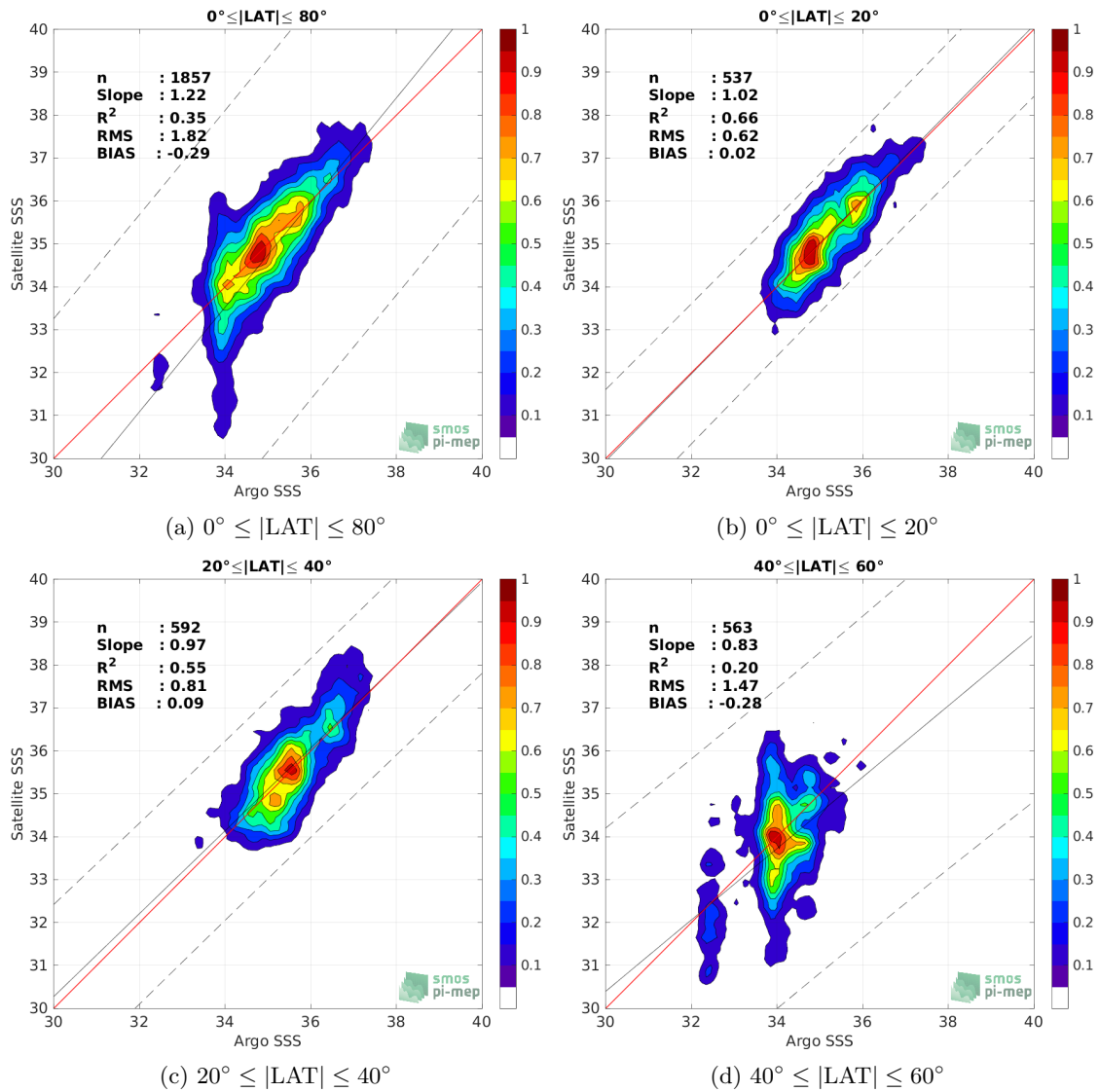


Figure 16: Contour maps of the concentration of SMOS SSS L2 v700 (ESA) SSS (y-axis) versus Argo SSS (x-axis) at match-up pairs for different latitude bands. For each plot, the red line shows $x=y$. The black thin and dashed lines indicate a linear fit through the data cloud and the $\pm 95\%$ confidence levels, respectively. The number match-up pairs n , the slope and R^2 coefficient of the linear fit, the root mean square (RMS) and the mean bias between satellite and *in situ* data are indicated for each latitude band in each plots.

3.4.3 Descending orbits

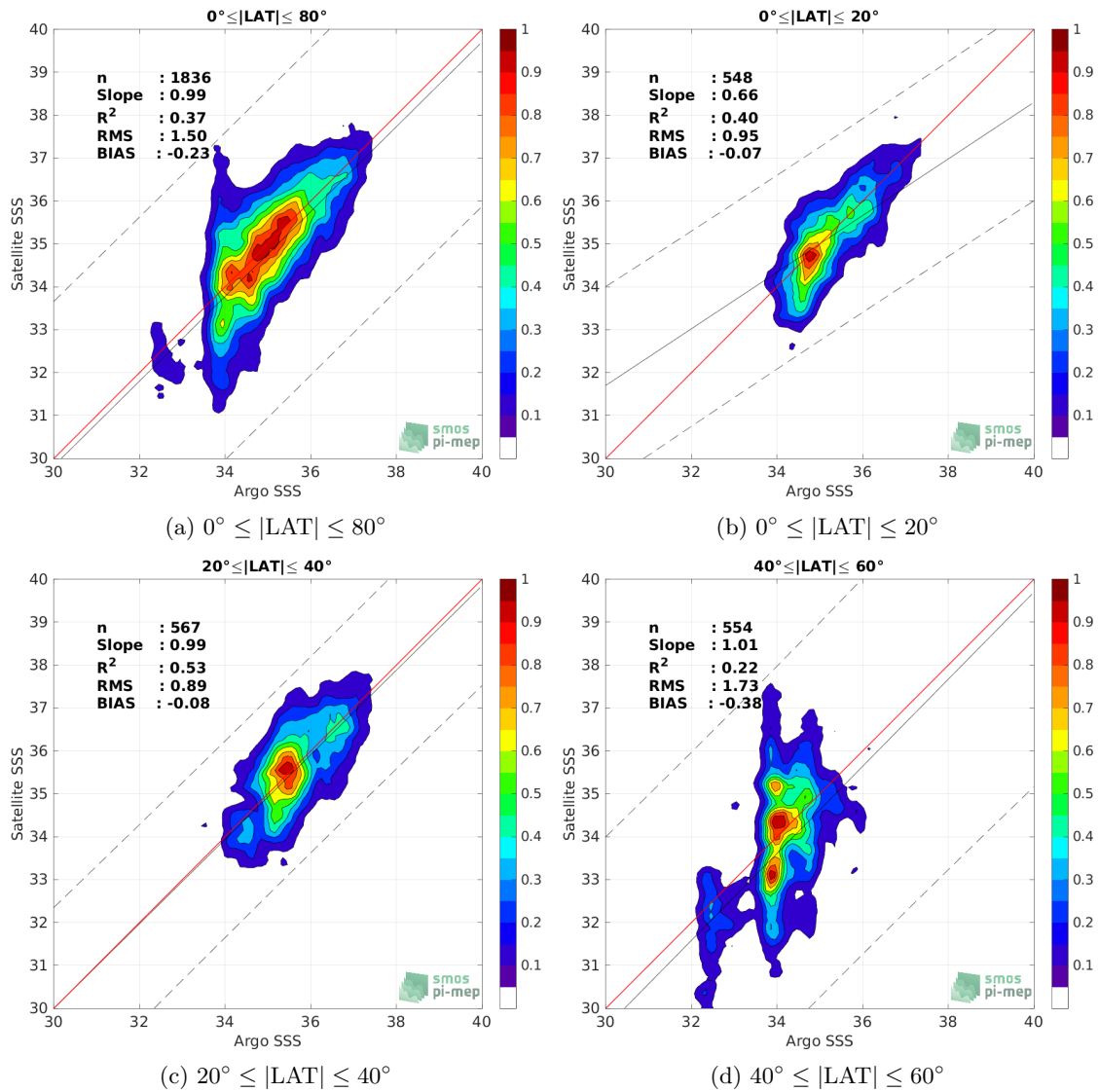


Figure 17: Contour maps of the concentration of SMOS SSS L2 v700 (ESA) SSS (y-axis) versus Argo SSS (x-axis) at match-up pairs for different latitude bands. For each plot, the red line shows $x=y$. The black thin and dashed lines indicate a linear fit through the data cloud and the $\pm 95\%$ confidence levels, respectively. The number match-up pairs n , the slope and R^2 coefficient of the linear fit, the root mean square (RMS) and the mean bias between satellite and *in situ* data are indicated for each latitude band in each plots.

3.5 Time series of the monthly median and Std of the Δ SSS sorted by latitudinal bands

3.5.1 Ascending and Descending orbits

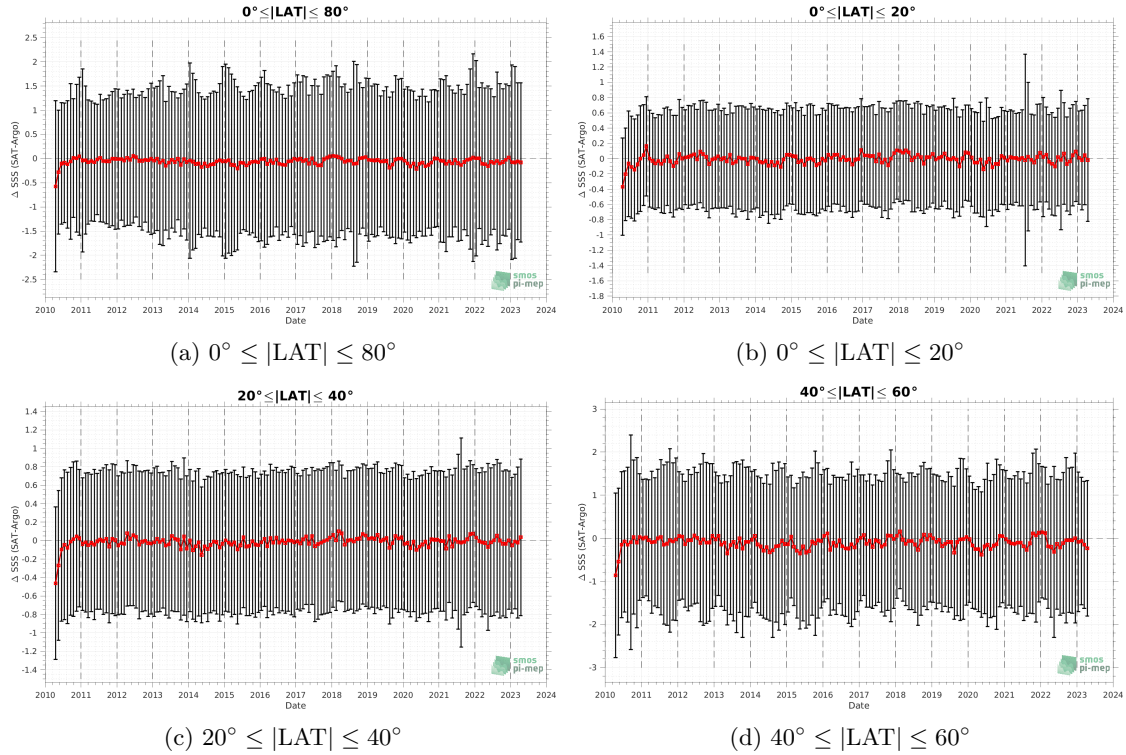


Figure 18: Monthly median (red curves) of Δ SSS (Satellite - Argo) and ± 1 Std (black vertical thick bars) as function of time for all the collected Pi-MEP match-up pairs estimated over the Global Ocean Pi-MEP region and for the full satellite product period are shown for different latitude bands: (a) 80°S-80°N, (b) 20°S-20°N, (c) 40°S-20°S and 20°N-40°N and (d) 60°S-40°S and 40°N-60°N.

3.5.2 Ascending orbits

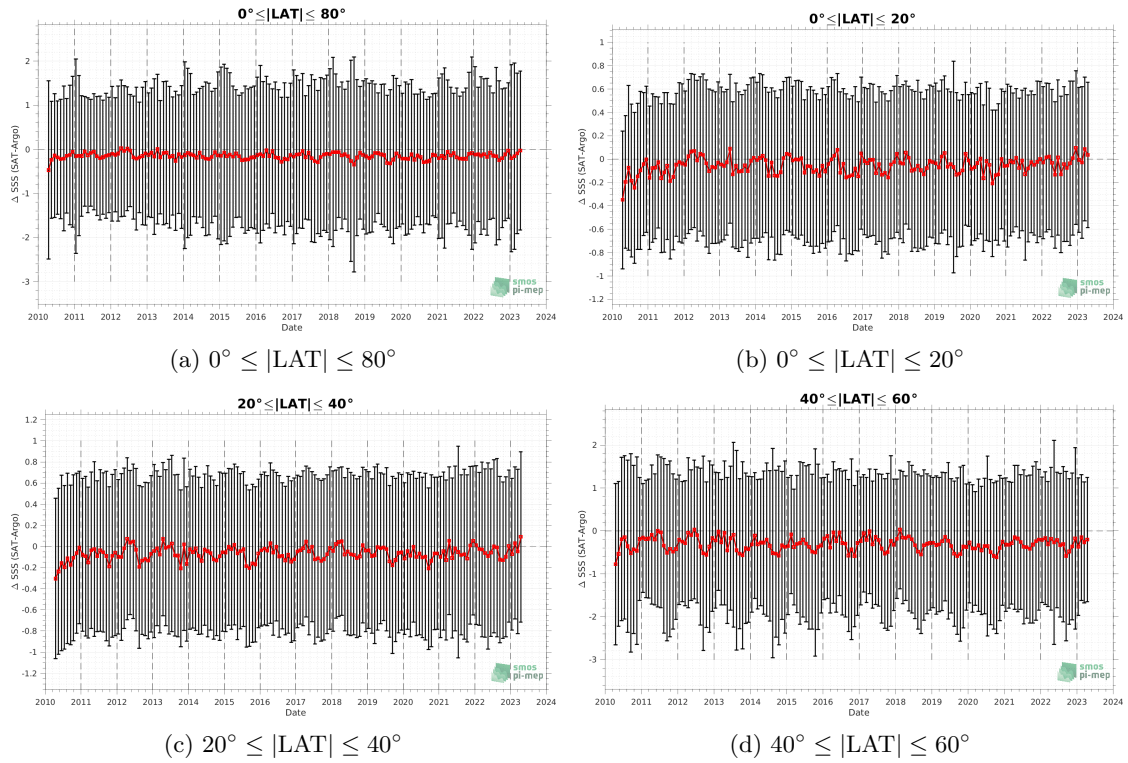


Figure 19: Monthly median (red curves) of ΔSSS (Satellite - Argo) and ± 1 Std (black vertical thick bars) as function of time for all the collected Pi-MEP match-up pairs estimated over the Global Ocean Pi-MEP region and for the full satellite product period are shown for different latitude bands: (a) $80^\circ\text{S}-80^\circ\text{N}$, (b) $20^\circ\text{S}-20^\circ\text{N}$, (c) $40^\circ\text{S}-20^\circ\text{S}$ and $20^\circ\text{N}-40^\circ\text{N}$ and (d) $60^\circ\text{S}-40^\circ\text{S}$ and $40^\circ\text{N}-60^\circ\text{N}$.

3.5.3 Descending orbits

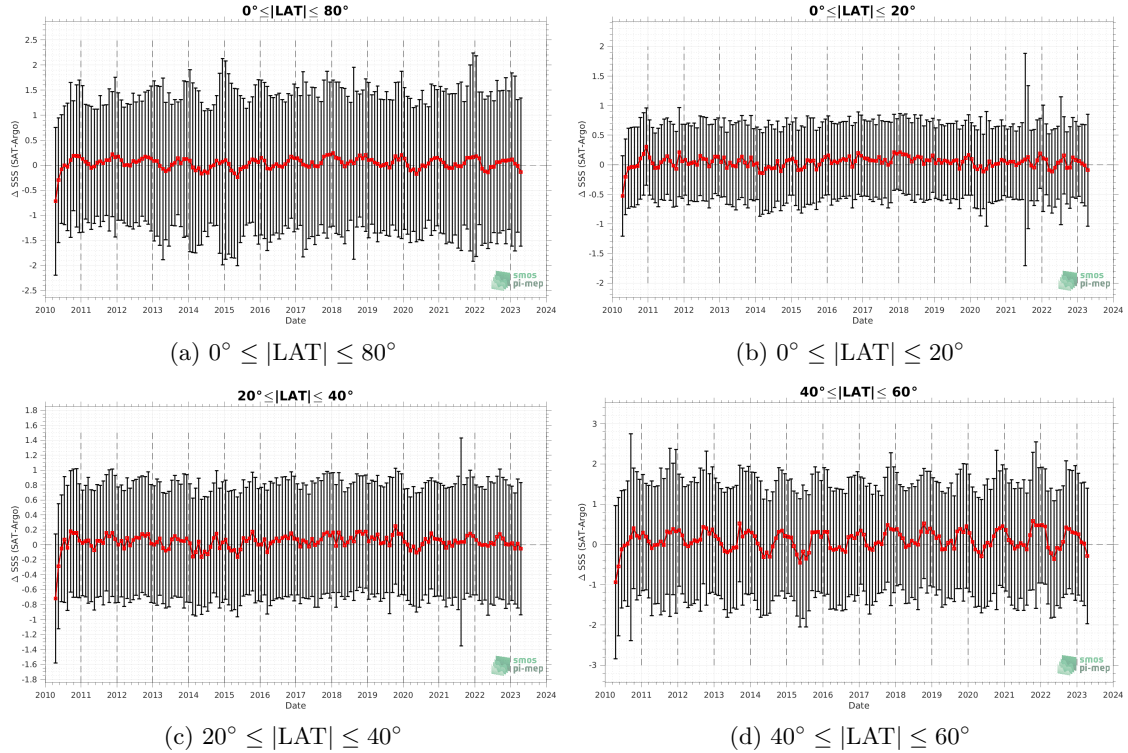


Figure 20: Monthly median (red curves) of ΔSSS (Satellite - Argo) and ± 1 Std (black vertical thick bars) as function of time for all the collected Pi-MEP match-up pairs estimated over the Global Ocean Pi-MEP region and for the full satellite product period are shown for different latitude bands: (a) $80^\circ\text{S}-80^\circ\text{N}$, (b) $20^\circ\text{S}-20^\circ\text{N}$, (c) $40^\circ\text{S}-20^\circ\text{S}$ and $20^\circ\text{N}-40^\circ\text{N}$ and (d) $60^\circ\text{S}-40^\circ\text{S}$ and $40^\circ\text{N}-60^\circ\text{N}$.

3.6 ΔSSS sorted as function of geophysical parameters

In Figure 21, we classify the match-up differences ΔSSS (Satellite - *in situ*) between SMOS SSS L2 v700 (ESA) and Argo SSS as function of the geophysical conditions at match-up points. The mean and std of ΔSSS (Satellite - Argo) is thus evaluated as function of the

- *in situ* SSS values per bins of width 0.2,
- *in situ* SST values per bins of width 1°C ,
- ASCAT daily wind values per bins of width 1 m/s,
- CMORPH 3-hourly rain rates per bins of width 1 mm/h, and,
- distance to coasts per bins of width 50 km.

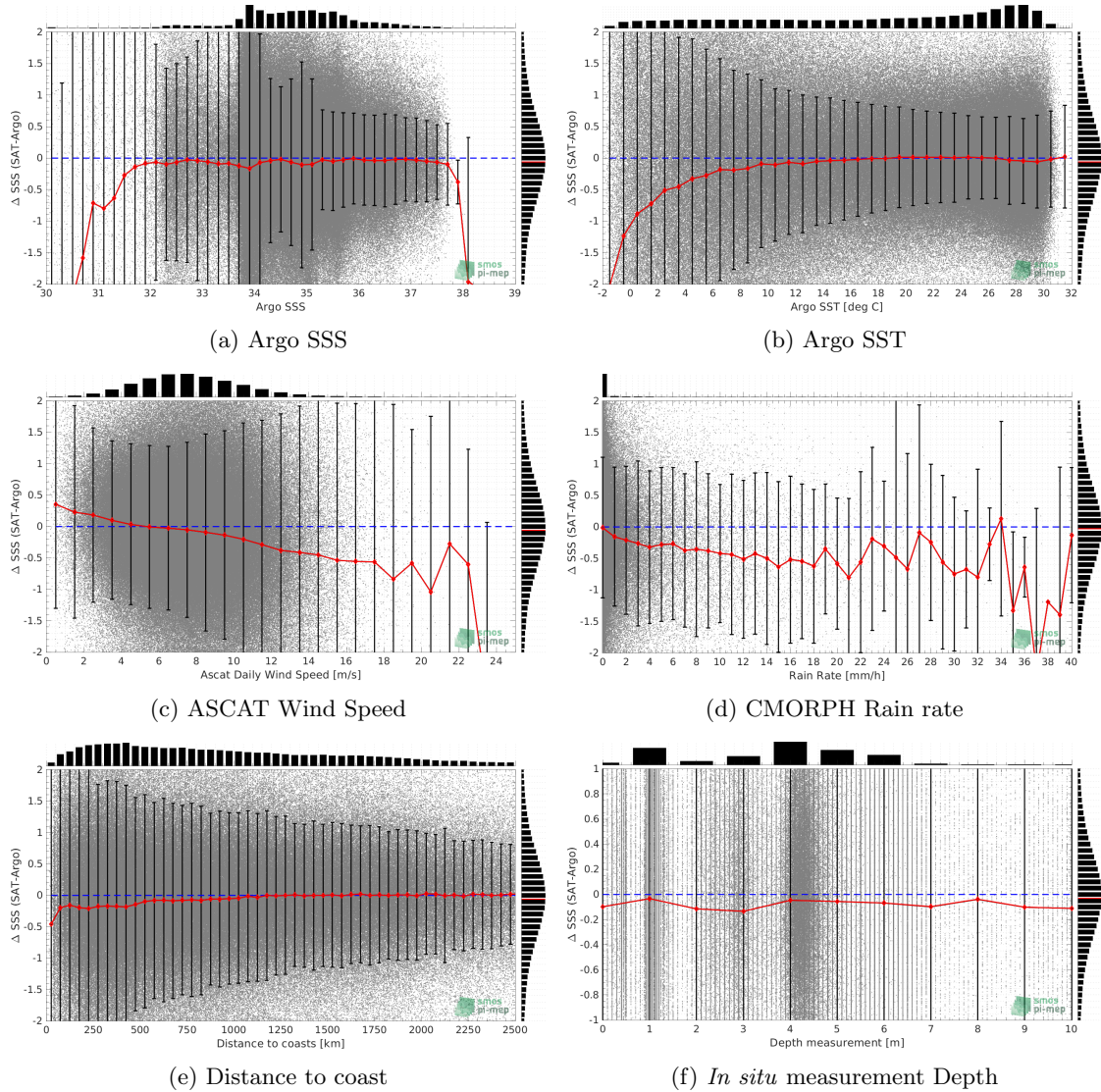


Figure 21: Δ SSS (Satellite - Argo) sorted as function of Argo SSS values a), Argo SST b), ASCAT Wind speed c), CMORPH rain rate d), distance to coast (e) and *in situ* measurement depth (f). In all plots the median and Std of Δ SSS for each bin is indicated by the red curves and black vertical thick bars (± 1 Std)

3.7 Δ SSS maps and statistics for different geophysical conditions

In Figures 22 and 23, we focus on sub-datasets of the match-up differences Δ SSS (Satellite - *in situ*) between SMOS SSS L2 v700 (ESA) and Argo for the following specific geophysical conditions:

- **C1**: if the local value at *in situ* location of estimated rain rate is zero, mean daily wind is in the range [3, 12] m/s, the SST is $> 5^\circ\text{C}$ and distance to coast is > 800 km.
- **C2**: if the local value at *in situ* location of estimated rain rate is zero, mean daily wind is

in the range $[3, 12]$ m/s.

- **C3**:if the local value at *in situ* location of estimated rain rate is high (ie. > 1 mm/h) and mean daily wind is low (ie. < 4 m/s).
- **C4**:if the mixed layer is shallow with depth < 20 m.
- **C5**:if the *in situ* data is located where the climatological SSS standard deviation is low (ie. above < 0.2).
- **C6**:if the *in situ* data is located where the climatological SSS standard deviation is high (ie. above > 0.2).

For each of these conditions, the temporal mean (gridded over spatial boxes of size $1^\circ \times 1^\circ$) and the histogram of the difference ΔSSS (Satellite - *in situ*) are presented.

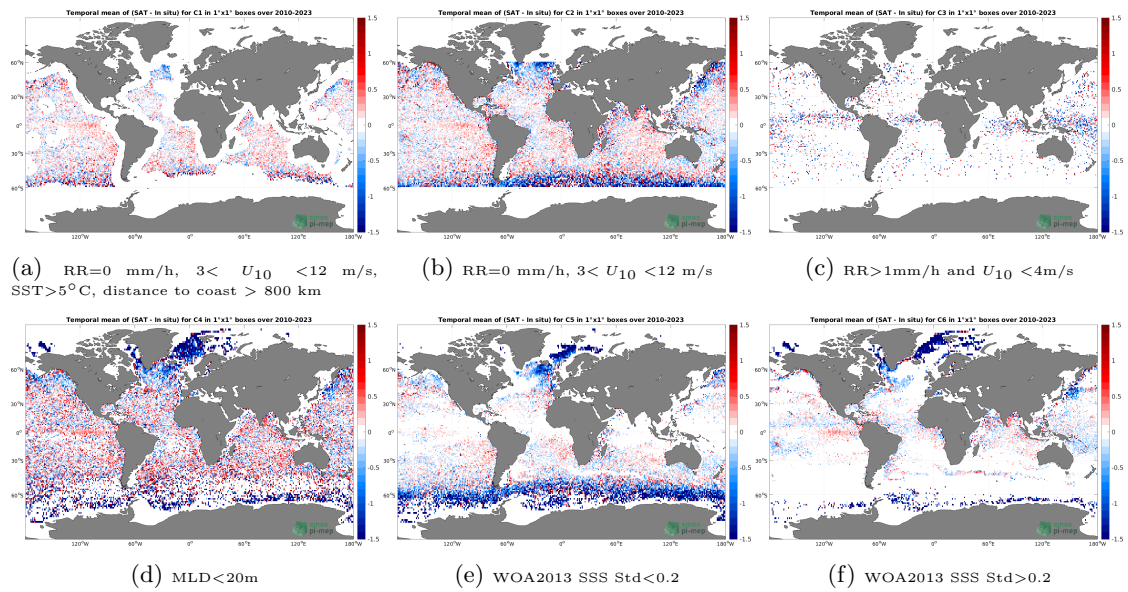


Figure 22: Temporal mean gridded over spatial boxes of size $1^\circ \times 1^\circ$ of ΔSSS (SMOS SSS L2 v700 (ESA) - Argo) for 6 different subdatasets corresponding to:RR=0 mm/h, $3 < U_{10} < 12$ m/s, SST $> 5^\circ\text{C}$, distance to coast > 800 km (a), RR=0 mm/h, $3 < U_{10} < 12$ m/s (b), RR > 1 mm/h and $U_{10} < 4$ m/s (c),MLD < 20 m (d),WOA2013 SSS Std < 0.2 (e),WOA2013 SSS Std > 0.2 (f).

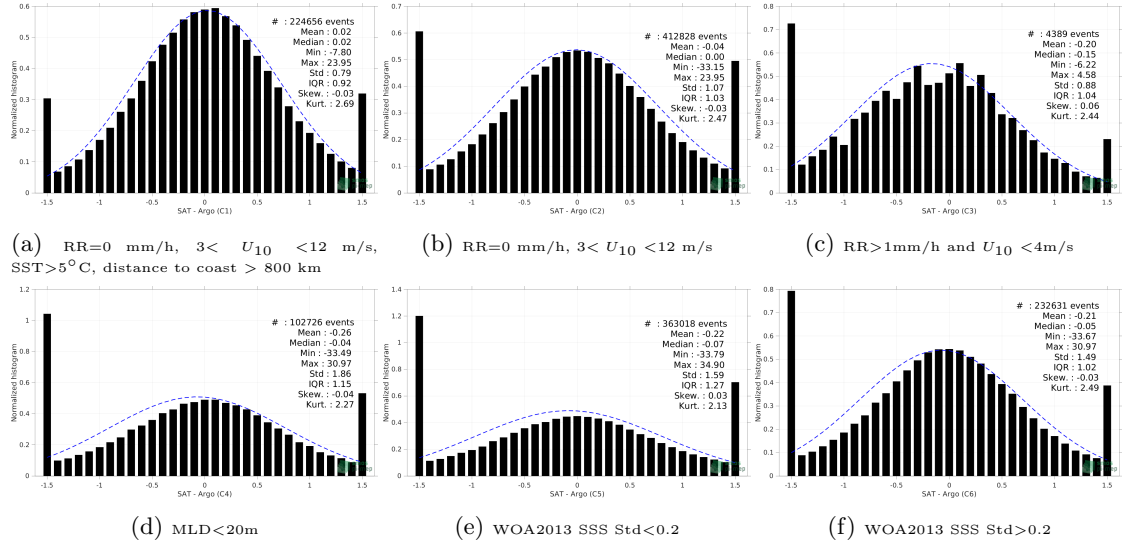


Figure 23: Normalized histogram of Δ SSS (SMOS SSS L2 v700 (ESA) - Argo) for 6 different subdatasets corresponding to: RR=0 mm/h, $3 < U_{10} < 12$ m/s, SST>5°C, distance to coast > 800 km (a), RR=0 mm/h, $3 < U_{10} < 12$ m/s (b), RR>1mm/h and $U_{10} < 4$ m/s (c), MLD<20m (d), WOA2013 SSS Std<0.2 (e), WOA2013 SSS Std>0.2 (f).

4 Summary

► Table 1 shows the mean, median, standard deviation (Std), root mean square (RMS), interquartile range (IQR), correlation coefficient (r^2) and robust standard deviation (Std*) of the match-up differences Δ SSS (Satellite - *in situ*) between SMOS SSS L2 v700 (ESA) and Argo derived over the Global Ocean Pi-MEP region and for the full satellite product period and for the following conditions:

- all: All the match-up pairs satellite/*in situ* SSS are used to derive the statistics
- C1: only pairs where RR=0 mm/h, $3 < U_{10} < 12$ m/s, SST>5°C, distance to coast > 800 km
- C2: only pairs where RR=0 mm/h, $3 < U_{10} < 12$ m/s
- C3: only pairs where RR>1mm/h and $U_{10} < 4$ m/s
- C4: only pairs where MLD<20m
- C5: only pairs where WOA2013 SSS Std<0.2
- C6: only pairs at WOA2013 SSS Std>0.2
- C7a: only pairs where distance to coast is < 150 km.
- C7b: only pairs where distance to coast is in the range [150, 800] km.
- C7c: only pairs where distance to coast is > 800 km.
- C8a: only pairs where *in situ* SST is < 5°C.

- C8b: only pairs where *in situ* SST is in the range [5, 15]°C.
- C8c: only pairs where *in situ* SST is > 15°C.
- C9a: only pairs where *in situ* SSS is < 33.
- C9b: only pairs where *in situ* SSS is in the range [33, 37].
- C9c: only pairs where *in situ* SSS is > 37.

Table 1: Statistics of Δ SSS (Satellite - Argo)

Condition	#	Median	Mean	Std	RMS	IQR	r ²	Std*
all	602759	-0.06	-0.22	1.58	1.59	1.16	0.439	0.87
C1	224656	0.02	0.02	0.79	0.79	0.92	0.584	0.69
C2	412828	0.00	-0.04	1.07	1.07	1.03	0.539	0.77
C3	4389	-0.15	-0.20	0.88	0.90	1.04	0.546	0.77
C4	102726	-0.04	-0.26	1.86	1.88	1.15	0.556	0.86
C5	363018	-0.07	-0.22	1.59	1.61	1.27	0.363	0.94
C6	232631	-0.05	-0.21	1.49	1.51	1.02	0.536	0.76
C7a	27757	-0.20	-0.61	2.51	2.58	1.78	0.644	1.30
C7b	245144	-0.13	-0.37	1.86	1.89	1.33	0.342	0.99
C7c	329290	-0.01	-0.08	1.18	1.18	1.03	0.434	0.77
C8a	83798	-0.63	-1.16	3.30	3.50	3.32	0.102	2.42
C8b	146598	-0.11	-0.20	1.41	1.43	1.60	0.435	1.19
C8c	371490	-0.01	-0.02	0.74	0.74	0.89	0.664	0.67
C9a	31871	-0.11	-0.33	2.29	2.32	1.77	0.609	1.31
C9b	557342	-0.06	-0.22	1.54	1.56	1.15	0.292	0.86
C9c	13546	-0.05	-0.05	0.65	0.65	0.82	0.049	0.61

► Table 2 presents statistics of Δ SSS (Satellite - Argo) using Argo delayed mode only.

Table 2: Statistics of Δ SSS (Satellite - Argo) - Delayed mode

Condition	#	Median	Mean	Std	RMS	IQR	r ²	Std*
all	413515	-0.06	-0.20	1.52	1.53	1.15	0.381	0.85
C1	164979	0.02	0.02	0.79	0.79	0.93	0.585	0.70
C2	296377	-0.01	-0.04	1.06	1.06	1.03	0.498	0.77
C3	3071	-0.17	-0.21	0.87	0.90	1.06	0.540	0.78
C4	67995	-0.02	-0.21	1.73	1.74	1.11	0.456	0.82
C5	253358	-0.06	-0.21	1.57	1.58	1.26	0.363	0.94
C6	155644	-0.05	-0.17	1.38	1.39	0.99	0.426	0.74
C7a	15711	-0.15	-0.52	2.35	2.41	1.56	0.311	1.15
C7b	162281	-0.12	-0.33	1.81	1.84	1.29	0.338	0.96
C7c	235119	-0.02	-0.09	1.18	1.19	1.04	0.438	0.78
C8a	53906	-0.58	-1.11	3.27	3.45	3.24	0.052	2.37
C8b	100959	-0.10	-0.17	1.37	1.38	1.57	0.224	1.17
C8c	257930	-0.02	-0.02	0.72	0.72	0.89	0.620	0.67
C9a	17966	-0.11	-0.33	2.15	2.18	1.70	0.293	1.27
C9b	386398	-0.06	-0.20	1.50	1.51	1.14	0.300	0.85
C9c	9151	-0.04	-0.04	0.64	0.64	0.81	0.059	0.61

► Table 3 presents statistics of Δ SSS (Satellite - ISAS) using only ISAS SSS values with PCTVAR<80%.

Table 3: Statistics of Δ SSS (Satellite - ISAS)

Condition	#	Median	Mean	Std	RMS	IQR	r ²	Std*
all	510503	-0.06	-0.21	1.55	1.56	1.17	0.435	0.87
C1	197935	0.02	0.02	0.79	0.79	0.93	0.588	0.70
C2	362681	0.00	-0.04	1.07	1.07	1.04	0.536	0.78
C3	3808	-0.21	-0.24	0.90	0.93	1.06	0.525	0.79
C4	86643	-0.07	-0.29	1.82	1.84	1.16	0.539	0.86
C5	308578	-0.07	-0.22	1.57	1.58	1.27	0.373	0.94
C6	196425	-0.05	-0.19	1.46	1.47	1.03	0.526	0.76
C7a	21482	-0.14	-0.47	2.33	2.38	1.62	0.651	1.19
C7b	207130	-0.13	-0.36	1.84	1.88	1.33	0.349	0.99
C7c	281403	-0.02	-0.09	1.17	1.18	1.04	0.443	0.78
C8a	68456	-0.62	-1.14	3.27	3.47	3.26	0.092	2.38
C8b	124793	-0.12	-0.20	1.39	1.41	1.59	0.424	1.18
C8c	316384	-0.01	-0.02	0.74	0.74	0.90	0.653	0.67
C9a	26428	-0.19	-0.46	2.33	2.37	1.75	0.564	1.31
C9b	472585	-0.06	-0.21	1.50	1.52	1.15	0.298	0.86
C9c	11490	-0.02	-0.01	0.64	0.64	0.83	0.051	0.62

► Numerical values can be downloaded as csv files for [Table 1](#), [Table 2](#) and [Table 3](#).

References

- Argo. Argo float data and metadata from Global Data Assembly Centre (Argo GDAC), 2000. doi: [10.17882/42182](https://doi.org/10.17882/42182).
- Abderrahim Bentamy and Denis Croize Fillon. Gridded surface wind fields from Metop/ASCAT measurements. *Int. J. Remote Sens.*, 33(6):1729–1754, March 2012. ISSN 1366-5901. doi: [10.1080/01431161.2011.600348](https://doi.org/10.1080/01431161.2011.600348).
- Abderrahim Bentamy, Semyon A. Grodsky, James A. Carton, Denis Croizé-Fillon, and Bertrand Chapron. Matching ASCAT and QuikSCAT winds. *J. Geophys. Res.*, 117(C2), February 2012. ISSN 0148-0227. doi: [10.1029/2011JC007479](https://doi.org/10.1029/2011JC007479).
- Jacqueline Boutin, Jean-Luc Vergely, Emmanuel P. Dinnat, Philippe Waldteufel, Francesco D’Amico, Nicolas Reul, Alexandre Supply, and Clovis Thouvenin-Masson. Correcting sea surface temperature spurious effects in salinity retrieved from spaceborne l-band radiometer measurements. *IEEE Trans. Geosci. Remote Sens.*, pages 1–14, 2020. doi: [10.1109/tgrs.2020.3030488](https://doi.org/10.1109/tgrs.2020.3030488).
- Jacqueline Boutin, Y. Chao, W. E. Asher, T. Delcroix, R. Drucker, K. Drushka, N. Kolodziejczyk, T. Lee, N. Reul, G. Reverdin, J. Schanze, A. Soloviev, L. Yu, J. Anderson, L. Brucker, E. Dinnat, A. S. Garcia, W. L. Jones, C. Maes, T. Meissner, W. Tang, N. Vinogradova, and B. Ward. Satellite and In Situ Salinity: Understanding Near-Surface Stratification and Sub-footprint Variability. *Bull. Am. Meteorol. Soc.*, 97(8):1391–1407, 2016. ISSN 1520-0477. doi: [10.1175/bams-d-15-00032.1](https://doi.org/10.1175/bams-d-15-00032.1).

- Clément de Boyer Montégut, Gurvan Madec, A. S. Fischer, A. Lazar, and D. Ludicone. Mixed layer depth over the global ocean: An examination of profile data and a profile-based climatology. *J. Geophys. Res.*, 109(C12), December 2004. doi: [10.1029/2004jc002378](https://doi.org/10.1029/2004jc002378).
- Clément de Boyer Montégut, Juliette Mignot, Alban Lazar, and Sophie Cravatte. Control of salinity on the mixed layer depth in the world ocean: 1. General description. *J. Geophys. Res.*, 112(C6), June 2007. ISSN 0148-0227. doi: [10.1029/2006jc003953](https://doi.org/10.1029/2006jc003953).
- Ralph R. Ferraro. SSM/I derived global rainfall estimates for climatological applications. *J. Geophys. Res.*, 102(D14):16715–16736, 07 1997. doi: [10.1029/97JD01210](https://doi.org/10.1029/97JD01210).
- Ralph R. Ferraro, Fuzhong Weng, Norman C. Grody, and Limin Zhao. Precipitation characteristics over land from the NOAA-15 AMSU sensor. *Geophys. Res. Lett.*, 27(17):2669–2672, 2000. doi: [10.1029/2000GL011665](https://doi.org/10.1029/2000GL011665).
- Fabienne Gaillard, Thierry Reynaud, Virginie Thierry, Nicolas Kolodziejczyk, and Karina von Schuckmann. In Situ-Based Reanalysis of the Global Ocean Temperature and Salinity with ISAS: Variability of the Heat Content and Steric Height. *J. Clim.*, 29(4):1305–1323, February 2016. ISSN 1520-0442. doi: [10.1175/jcli-d-15-0028.1](https://doi.org/10.1175/jcli-d-15-0028.1).
- Robert J. Joyce, John E. Janowiak, Phillip A. Arkin, and Pingping Xie. CMORPH: A Method that Produces Global Precipitation Estimates from Passive Microwave and Infrared Data at High Spatial and Temporal Resolution. *J. Hydrometeorol.*, 5(3):487–503, June 2004. doi: [10.1175/1525-7541\(2004\)005<0487:camtpg>2.0.co;2](https://doi.org/10.1175/1525-7541(2004)005<0487:camtpg>2.0.co;2).
- Nicolas Kolodziejczyk, Gilles Reverdin, and Alban Lazar. Interannual Variability of the Mixed Layer Winter Convection and Spice Injection in the Eastern Subtropical North Atlantic. *J. Phys. Oceanogr.*, 45(2):504–525, Feb 2015. ISSN 1520-0485. doi: [10.1175/jpo-d-14-0042.1](https://doi.org/10.1175/jpo-d-14-0042.1).
- Christian Kummerow, Y. Hong, W. S. Olson, S. Yang, R. F. Adler, J. McCollum, R. Ferraro, G. Petty, D-B. Shin, and T. T. Wilheit. The Evolution of the Goddard Profiling Algorithm (GPROF) for Rainfall Estimation from Passive Microwave Sensors. *J. Appl. Meteorol.*, 40(11): 1801–1820, 2001. doi: [10.1175/1520-0450\(2001\)040<1801:TEOTGP>2.0.CO;2](https://doi.org/10.1175/1520-0450(2001)040<1801:TEOTGP>2.0.CO;2).