



Match-up database Analyses Report

SMOS SSS L2Q v321 - 0.25 Deg (CATDS-CPDC)

Surface drifters

Tropical Pacific Ocean

prepared by the Pi-MEP Consortium

June 15, 2021

Contents

1	Overview	5
2	The MDB file datasets	6
2.1	Satellite SSS product	6
2.1.1	SMOS SSS L2Q v321 - 0.25 Deg (CATDS-CPDC)	6
2.2	<i>In situ</i> SSS dataset	7
2.3	Auxiliary geophysical datasets	7
2.3.1	CMORPH	8
2.3.2	ASCAT	9
2.3.3	ISAS	9
2.3.4	World Ocean Atlas Climatology	10
2.4	Overview of the Match-ups generation method	10
2.4.1	<i>In situ</i> /Satellite data filtering	10
2.4.2	<i>In situ</i> /Satellite Co-localization	10
2.4.3	MDB pair Co-localization with auxiliary data and complementary information	11
2.4.4	Content of the Match-Up NetCDF files	12
2.5	MDB characteristics for the particular <i>in situ</i> /satellite pairs	18
2.5.1	Number of paired SSS data as a function of time and distance to coast	18
2.5.2	Histograms of the SSS match-ups	18
2.5.3	Spatial Distribution of Match-ups	19
2.5.4	Histograms of the spatial and temporal lags of the match-ups pairs	19
3	MDB file Analyses	20
3.1	Spatial Maps of the Temporal mean and Std of <i>in situ</i> and satellite SSS and of the difference (Δ SSS)	20
3.2	Time series of the monthly median and Std of <i>in situ</i> and satellite SSS and of the difference (Δ SSS)	21
3.3	Zonal mean and Std of <i>in situ</i> and satellite SSS and of the difference (Δ SSS)	22
3.4	Scatterplots of satellite vs <i>in situ</i> SSS by latitudinal bands	23
3.5	Time series of the monthly median and Std of Δ SSS sorted by latitudinal bands	24
3.6	Δ SSS sorted as function of geophysical parameters	25
3.7	Δ SSS maps and statistics for different geophysical conditions	26
4	Summary	28
5	More Comparison/Validation Materials	30
5.1	Comparisons with other satellite products	30
5.2	Statistics derived for the different <i>in situ</i> databases	32

List of Figures

1	Number of match-ups between Surface drifters and SMOS SSS L2Q v321 - 0.25 Deg (CATDS-CPDC) SSS as a function of time (a) and as function of the distance to coast (b) over the Tropical Pacific Ocean Pi-MEP region and for the full satellite product period.	18
---	--	----

2	Histograms of SSS from Surface drifters (a) and SMOS SSS L2Q v321 - 0.25 Deg (CATDS-CPDC) (b) considering all match-up pairs per bins of 0.1 over the Tropical Pacific Ocean Pi-MEP region and for the full satellite product period.	19
3	Number of SSS match-ups between Surface drifters SSS and the SMOS SSS L2Q v321 - 0.25 Deg (CATDS-CPDC) SSS product for the Tropical Pacific Ocean Pi-MEP region over 1°x1° boxes and for the full satellite product period.	19
4	Histograms of the spatial (a) and temporal (b) lags between the location/time of the Surface drifters measurement and the date of the corresponding SMOS SSS L2Q v321 - 0.25 Deg (CATDS-CPDC) SSS pixel.	20
5	Temporal mean (left) and Std (right) of SSS from SMOS SSS L2Q v321 - 0.25 Deg (CATDS-CPDC) (top), Surface drifters (middle), and of Δ SSS (Satellite - Surface drifters). Only match-up pairs are used to generate these maps.	21
6	Time series of the monthly median SSS (top), median of Δ SSS (Satellite - Surface drifters) and Std of Δ SSS (Satellite - Surface drifters) over the Tropical Pacific Ocean Pi-MEP region considering all match-ups collected by the Pi-MEP.	22
7	Left panel: Zonal mean SSS from SMOS SSS L2Q v321 - 0.25 Deg (CATDS-CPDC) satellite product (black) and from Surface drifters (blue). Right panel: Zonal mean of Δ SSS (Satellite - Surface drifters) for all the collected Pi-MEP match-up pairs estimated over the full satellite product period.	23
8	Contour maps of the concentration of SMOS SSS L2Q v321 - 0.25 Deg (CATDS-CPDC) SSS (y-axis) versus Surface drifters SSS (x-axis) at match-up pairs for different latitude bands. For each plot, the red line shows x=y. The black thin and dashed lines indicate a linear fit through the data cloud and the $\pm 95\%$ confidence levels, respectively. The number match-up pairs n , the slope and R^2 coefficient of the linear fit, the root mean square (RMS) and the mean bias between satellite and <i>in situ</i> data are indicated for each latitude band in each plots.	24
9	Monthly median (red curves) of Δ SSS (Satellite - Surface drifters) and ± 1 Std (black vertical thick bars) as function of time for all the collected Pi-MEP match-up pairs estimated over the Tropical Pacific Ocean Pi-MEP region and for the full satellite product period are shown for different latitude bands: (a) 80°S-80°N, (b) 20°S-20°N, (c) 40°S-20°S and 20°N-40°N and (d) 60°S-40°S and 40°N-60°N.	25
10	Δ SSS (Satellite - Surface drifters) sorted as function of Surface drifters SSS values a), Surface drifters SST b), ASCAT Wind speed c), CMORPH rain rate d) and distance to coast (e). In all plots the median and Std of Δ SSS for each bin is indicated by the red curves and black vertical thick bars (± 1 Std)	26
11	Temporal mean gridded over spatial boxes of size 1°x1° of Δ SSS (SMOS SSS L2Q v321 - 0.25 Deg (CATDS-CPDC) - Surface drifters) for 5 different subdatasets corresponding to: RR=0 mm/h, $3 < U_{10} < 12$ m/s, SST>5°C, distance to coast > 800 km (a), RR=0 mm/h, $3 < U_{10} < 12$ m/s (b), RR>1mm/h and $U_{10} < 4$ m/s (c), WOA2013 SSS Std<0.2 (d), WOA2013 SSS Std>0.2 (e).	27
12	Normalized histogram of Δ SSS (SMOS SSS L2Q v321 - 0.25 Deg (CATDS-CPDC) - Surface drifters) for 5 different subdatasets corresponding to: RR=0 mm/h, $3 < U_{10} < 12$ m/s, SST>5°C, distance to coast > 800 km (a), RR=0 mm/h, $3 < U_{10} < 12$ m/s (b), RR>1mm/h and $U_{10} < 4$ m/s (c), WOA2013 SSS Std<0.2 (d), WOA2013 SSS Std>0.2 (e).	28

Acronym

Aquarius	NASA/CONAE Salinity mission
ASCAT	Advanced Scatterometer
ATBD	Algorithm Theoretical Baseline Document
BLT	Barrier Layer Thickness
CMORPH	CPC MORPHing technique (precipitation analyses)
CPC	Climate Prediction Center
CTD	Instrument used to measure the conductivity, temperature, and pressure of seawater
DM	Delayed Mode
EO	Earth Observation
ESA	European Space Agency
FTP	File Transfer Protocol
GOSUD	Global Ocean Surface Underway Data
GTMBA	The Global Tropical Moored Buoy Array
Ifremer	Institut français de recherche pour l'exploitation de la mer
IPEV	Institut polaire français Paul-Émile Victor
IQR	Interquartile range
ISAS	<i>In Situ</i> Analysis System
Kurt	Kurtosis (fourth central moment divided by fourth power of the standard deviation)
L2	Level 2
LEGOS	Laboratoire d'Etudes en Géophysique et Océanographie Spatiales
LOCEAN	Laboratoire d'Océanographie et du Climat : Expérimentations et Approches Numériques
LOPS	Laboratoire d'Océanographie Physique et Spatiale
MDB	Match-up Data Base
MEOP	Marine Mammals Exploring the Oceans Pole to Pole
MLD	Mixed Layer Depth
NCEI	National Centers for Environmental Information
NRT	Near Real Time
NTAS	Northwest Tropical Atlantic Station
OI	Optimal interpolation
Pi-MEP	Pilot-Mission Exploitation Platform
PIRATA	Prediction and Researched Moored Array in the Atlantic
QC	Quality control
R_{sat}	Spatial resolution of the satellite SSS product
RAMA	Research Moored Array for African-Asian-Australian Monsoon Analysis and Prediction
r^2	Square of the Pearson correlation coefficient
RMS	Root mean square
RR	Rain rate
SAMOS	Shipboard Automated Meteorological and Oceanographic System
Skew	Skewness (third central moment divided by the cube of the standard deviation)
SMAP	Soil Moisture Active Passive (NASA mission)
SMOS	Soil Moisture and Ocean Salinity (ESA mission)
SPURS	Salinity Processes in the Upper Ocean Regional Study
SSS	Sea Surface Salinity
$SSS_{in situ}$	<i>In situ</i> SSS data considered for the match-up

SSS_{SAT}	Satellite SSS product considered for the match-up
ΔSSS	Difference between satellite and <i>in situ</i> SSS at colocalized point ($\Delta SSS = SSS_{SAT} - SSS_{in\,situ}$)
SST	Sea Surface Temperature
Std	Standard deviation
Std*	Robust Standard deviation = $\text{median}(\text{abs}(x - \text{median}(x))) / 0.67$ (less affected by outliers than Std)
Stratus	Surface buoy located in the eastern tropical Pacific
Survostral	SURVeillance de l'Océan AuSTRAL (Monitoring the Southern Ocean)
TAO	Tropical Atmosphere Ocean
TSG	ThermoSalinoGraph
WHOI	Woods Hole Oceanographic Institution
WHOTS	WHOI Hawaii Ocean Time-series Station
WOA	World Ocean Atlas

1 Overview

In this report, we present systematic analyses of the Match-up DataBase (MDB) files generated by the Pi-MEP platform within the following Pi-MEP region and for the below pair of Satellite/*in situ* SSS data:

- Pi-MEP region: Tropical Pacific Ocean (download the corresponding mask in NetCDF [here](#))
- SSS satellite product (SSS_{SAT}): SMOS SSS L2Q v321 - 0.25 Deg (CATDS-CPDC)
- *In situ* dataset ($SSS_{In situ}$): Surface drifters (download the corresponding *in situ* report [here](#))

In the following, $\Delta SSS = SSS_{SAT} - SSS_{In situ}$ denotes the difference between the satellite and *in situ* SSS at the colocalized points that form the MDB.

This report presents successively:

The MDB file DataSets (Section 2)

- A short description of the satellite SSS product considered in the match-up (2.1)
- A short description of the *in situ* SSS dataset considered in the match-up (2.2)
- A short description of the auxiliary geophysical datasets co-localized with SSS pairs (2.3)
- An overview of how the Match-ups were evaluated (2.4)
- An overview of the MDB characteristics for the particular *in situ*/satellite pairs (2.5)

The major results of the MDB file Analyses (Section 3)

- Spatial Maps of the Time-mean and temporal Std of *in situ* and satellite SSS and of the ΔSSS (3.1)
- Time series of the monthly median and Std of *in situ* and satellite SSS and of the ΔSSS (3.2)
- Zonal mean and Std of *in situ* and satellite SSS and of the ΔSSS (3.3)
- Scatterplots of satellite vs *in situ* SSS by latitudinal bands (3.4)
- Time series of the monthly median and Std of the ΔSSS sorted by latitudinal bands (3.5)
- ΔSSS sorted as function of geophysical parameters (3.6)
- ΔSSS maps and statistics for different geophysical conditions (3.7)

All analyses are conducted over the Pi-MEP Region specified above and over the full satellite SSS product period. Original figures appearing in this report can be downloaded as PNG files [here](#) or by clicking directly on the figure.

2 The MDB file datasets

2.1 Satellite SSS product

2.1.1 SMOS SSS L2Q v321 - 0.25 Deg (CATDS-CPDC)

The DPGS processing (under the ESA responsibility) begins from L0 and ends to L2OS. The CATDS processing is dedicated to L3 and L4 products, i.e. L2OS salinity averaging and derived products. Because the CATDS does not use the same grid and not exactly the same L2OS processor than the ones used by the DPGS, the processing begins from L1b products. The mission ground segment is organized around a Level 1 processor, which has for main task the reconstruction of SMOS brightness temperatures, and a Level 2 processor aimed at retrieving Sea Surface Salinity from SMOS data.

The L1b reconstruction process consists to obtain brightness temperature Fourier components from visibilities in the antenna plan. At this level, apodization window and interpolation procedure is applied in order to obtain brightness temperatures in a regular grid. Because the geophysical parameters have to be estimated in the earth frame, Fourier interpolation and apodization is applied in order to give Brightness temperatures at the EASE grid point location. The data are sorted in order to obtain for each grid point the set of brightness temperatures corresponding to different snapshots, i.e. different incidence angles (L1c data). One feature of the reconstruction process is the reconstruction grid, which is the ensemble of geographic locations where SMOS brightness temperatures will be derived. It is worth noting that in SMOS processing, centre of picture elements (grid points) are not driven by the instrument but are in the hands of the SMOS project team.

The apodization function is applied in the reconstruction and participates to the definition of the synthetic antenna beam. This way, it shapes the measurement footprints. In the Level 2 SSS processor, the footprint information is provided by the level 1c, i.e. the semi-minor and semi-major axis of the equivalent 3dB ellipse (footprint can be approximated by pseudo ellipsoidal function), to which definition of the apodization function shall be added.

In the Level 1c product, SMOS data are sorted out in such a way that all brightness temperatures reconstructed at the same grid point and auxiliary information are packed together. The ability of SMOS to capture signal variations as a function of viewing conditions is a constraint contributing to better retrieval of sea surface salinity. A single Level 1c product includes SMOS acquisitions during one day (from pole to pole), with a separation between ascending and descending orbits.

The CATDS C-PDC generates its own L1c products, starting from L1b, on the EASE grid which is different from the ISEA grid used in ESA processing made at DPGS. These L1 products are internal to the CATDS and are not distributed to the users.

The L2OS processor takes in input the L1c brightness temperatures provided by the L1 processor at antenna level. The main output of the L2OS processor is the retrieved salinity which is computed at grid point level, using multi-incidence angle observations.

The CATDS L2OS products are provided on the EASE specific grid with a 24 km resolution (at the latitude 30°). These L2OS products are internal to the CATDS and are not distributed to the users.

In this processor, three different forward models are implemented in order to retrieve the salinity and other geophysical parameters. This is done using a series of physical models which are applied to auxiliary parameters (SST, wind, etc.) and a first guess SSS, in order to compute the brightness temperature that should be measured at a specific polarization and geometric configuration. These values are transported to SMOS antenna level and then compared to actually measured BT.

Because L1 reconstruction generates biases, an empirical correction, called OTT, is applied on the BT before SSS retrieval. The correction is applied according to the position of the BT on the FOV and differs from one polarization to the other. Because of RFI contamination and reconstruction biases, a specific module allows to detect BT outliers which are removed before SSS retrieval.

An iterative process (considering all measurements/views of a single grid point obtained in consecutive snapshots) allows minimization of the difference between modeled and measured values, until identifying a retrieved SSS for this grid point. This minimization is done using a Levenberg-Marquardt algorithm which allows the estimation of the salinity and its error. Three different models are proposed for the effect of ocean surface roughness in L-band emissivity and then three retrieval processes will be run in parallel, and three SSS values provided in the L2 Output Product.

This L2Q products, at 25km spatial resolutions (MIR_CSQ3A_ in CATDS-CPDC conventions). The reprocessed part (from 2010 to April 2019) of this dataset can be obtained from [here](#) and the operational part from [OPER](#).

Table 1: Satellite SSS product characteristics

SMOS SSS L2Q v321 - 0.25 Deg (CATDS-CPDC)	
Spatial resolution	25 km
Temporal resolution	Daily
Temporal coverage	From 2010-01-10 to now
Version	321
Data access	RE06 / OPER
Documentation	https://www.catds.fr/Resources/Documentation
DOI	http://dx.doi.org/10.12770/0f02fc28-cb86-4c44-89f3-ee7df6177e7b

The [SMOS SSS L2Q v321 - 0.25 Deg \(CATDS-CPDC\)](#) Sea Surface Salinity product were obtained from the "Centre Aval de Traitement des Données SMOS" (CATDS), operated for the "Centre National d'Etudes Spatiales" (CNES, France) by IFREMER (Brest, France)

2.2 *In situ* SSS dataset

The skin depth of the L-band radiometer signal over the ocean is about 1 cm whereas classical surface salinity measured by ships or Argo floats are performed at a few meters depth. In order to improve the knowledge of the SSS variability in the first 50 cm depth, to better document the SSS variability in a satellite pixel and to provide ground-truth as close as possible to the sea surface for validating satellite SSS, the L-band remotely sensed community proposed to deploy numerous surface drifters over various parts of the ocean. Surface drifter data are provided by the LOCEAN (see <https://www.locean-ipsl.upmc.fr/smos/drifters/>). Only validated data are considered with uncertainty order of 0.01 and 0.1.

2.3 Auxiliary geophysical datasets

Additional EO datasets are used to characterize the geophysical conditions at the *in situ*/satellite SSS pair measurement locations and time, and 10 days prior the measurements to get an estimate of the geophysical condition and history. As discussed in [Boutin et al. \(2016\)](#), the presence of vertical gradients in, and horizontal variability of, sea surface salinity indeed complicates

comparison of satellite and *in situ* measurements. The additional EO data are used here to get a first estimates of conditions for which L-band satellite SSS measured in the first centimeters of the upper ocean within a 50-150 km diameter footprint might differ from pointwise *in situ* measurements performed in general between 10 and 5 m depth below the surface. The spatio-temporal variability of SSS within a satellite footprint (50–150 km) is a major issue for satellite SSS validation in the vicinity of river plumes, frontal zones, and significant precipitation. Rainfall can in some cases produce vertical salinity gradients exceeding 1 pss m^{-1} ; consequently, it is recommended that satellite and *in situ* SSS measurements less than 3–6 h after rain events should be considered with care when used in satellite calibration/validation analyses. To identify such situation, the Pi-MEP platform is first using CMORPH products to characterize the local value and history of rain rate and ASCAT gridded data are used to characterize the local surface wind speed and history. For validation purpose, the ISAS monthly SSS *in situ* analysed fields at 5 m depth are collocated and compared with the satellite SSS products. The use of ISAS is motivated by the fact that it is used in the SMOS L2 official validation protocol in which systematic comparisons of SMOS L2 retrieved SSS with ISAS are done. In complement to ISAS, monthly std climatological fields from the World Ocean Atlas (WOA13) at the match-up pairs location and date are also used to have an a priori information of the local SSS variability.

2.3.1 CMORPH

Precipitation are estimated using the CMORPH 3-hourly products at $1/4^\circ$ resolution (Joyce et al. (2004)). CMORPH (CPC MORPHing technique) produces global precipitation analyses at very high spatial and temporal resolution. This technique uses precipitation estimates that have been derived from low orbiter satellite microwave observations exclusively, and whose features are transported via spatial propagation information that is obtained entirely from geostationary satellite IR data. At present NOAA incorporate precipitation estimates derived from the passive microwaves aboard the DMSP 13, 14 and 15 (SSM/I), the NOAA-15, 16, 17 and 18 (AMSU-B), and AMSR-E and TMI aboard NASA's Aqua, TRMM and GPM spacecraft, respectively. These estimates are generated by algorithms of Ferraro (1997) for SSM/I, Ferraro et al. (2000) for AMSU-B and Kummerow et al. (2001) for TMI. Note that this technique is not a precipitation estimation algorithm but a means by which estimates from existing microwave rainfall algorithms can be combined. Therefore, this method is extremely flexible such that any precipitation estimates from any microwave satellite source can be incorporated.

With regard to spatial resolution, although the precipitation estimates are available on a grid with a spacing of 8 km (at the equator), the resolution of the individual satellite-derived estimates is coarser than that - more on the order of 12×15 km or so. The finer "resolution" is obtained via interpolation.

In effect, IR data are used as a means to transport the microwave-derived precipitation features during periods when microwave data are not available at a location. Propagation vector matrices are produced by computing spatial lag correlations on successive images of geostationary satellite IR which are then used to propagate the microwave derived precipitation estimates. This process governs the movement of the precipitation features only. At a given location, the shape and intensity of the precipitation features in the intervening half hour periods between microwave scans are determined by performing a time-weighting interpolation between microwave-derived features that have been propagated forward in time from the previous microwave observation and those that have been propagated backward in time from the following microwave scan. NOAA refer to this latter step as "morphing" of the features.

For the present Pi-MEP products, we only considered the 3-hourly products at $1/4$ degree resolution. The entire CMORPH record (December 2002-present) for 3-hourly, $1/4$ de-

gree lat/lon resolution can be found at: ftp://ftp.cpc.ncep.noaa.gov/precip/CMORPH_V1.0/CRT/. CMORPH estimates cover a global belt (-180°W to 180°E) extending from 60°S to 60°N latitude and are available for the complete period of the Pi-MEP core datasets (Jan 2010-now).

2.3.2 ASCAT

Advanced SCATterometer (ASCAT) daily data produced and made available at [Ifremer/CERSAT](http://ifremer.cersat.fr/) on a 0.25°x0.25° resolution grid ([Bentamy and Fillon \(2012\)](#)) since March 2007 are used to characterize the mean daily wind at the match-up pair location as well as the wind history during the 10-days period preceding the in situ measurement date. These wind fields are calculated based on a geostatistical method with external drift. Remotely sensed data from ASCAT are considered as observations while those from numerical model analysis (ECMWF) are associated with the external drift. The spatial and temporal structure functions for wind speed, zonal and meridional wind components are estimated from ASCAT retrievals. Furthermore, the new procedure includes a temporal interpolation of the retrievals based on the complex empirical orthogonal function (CEOF) approach, in order to enhance the sampling length of the scatterometer observations. The resulting daily wind fields involves the main known surface wind patterns as well as some variation modes associated with temporal and spatial moving features. The accuracy of the gridded winds was investigated through comparisons with moored buoy data in [Bentamy et al. \(2012\)](#) and resulted in rms differences for wind speed and direction are about 1.50 m.s⁻¹ and 20°.

2.3.3 ISAS

The In Situ Analysis System (ISAS), as described in [Gaillard et al. \(2016\)](#) is a data based re-analysis of temperature and salinity fields over the global ocean 70°N–70°S on a 1/2° grid. It was initially designed to synthesize the temperature and salinity profiles collected by the Argo program. It has been later extended to accommodate all type of vertical profile as well as time series. ISAS gridded fields are entirely based on *in situ* measurements. The methodology and configuration have been conceived to preserve as much as possible the data information content and resolution. ISAS is developed and run in a research laboratory ([LOPS](#)) in close collaboration with Coriolis, one of Argo Global Data Assembly Center and unique data provider for the Mercator operational oceanography system. In Pi-MEP, the products in used are the [INSITU_GLO_TS_OA_REP_OBSERVATIONS_013_002_b](#) for the period 2010 to 2019 and [INSITU_GLO_TS_OA_NRT_OBSERVATIONS_013_002_a](#) for the Near-Real Time (2020-2021) derived at the Coriolis data center and provided by the Copernicus Marine Environment Monitoring Service ([CMEMS](#)). The major contribution to the data set is from Argo array of profiling floats, reaching an approximate resolution of one profile every 10-days and every 3-degrees over the satellite SSS period (<http://www.umr-lops.fr/SNO-Argo/Products/ISAS-T-S-fields/>); in this version SSS from ship of opportunity thermosalinographs are not used, so that we can consider SMOS SSS validation using these measurements independent of ISAS. The ISAS optimal interpolation involves a structure function modeled as the sum of two Gaussian functions, each associated with specific time and space scales, resulting in a smoothing over typically 3 degrees. The smallest scale which can be retrieved with ISAS analysis is not smaller than 300–500 km ([Kolodziejczyk et al. \(2015\)](#)). For validation purpose, the ISAS monthly SSS fields at 5 m depth are collocated and compared with the satellite SSS products and included in the Pi-MEP Match-up files. In addition, the "percentage of variance" fields (PCTVAR) contained in the ISAS analyses provide information on the local variability of *in situ* SSS measurements within 1/2°x1/2° boxes.

2.3.4 World Ocean Atlas Climatology

The World Ocean Atlas 2013 version 2 (WOA13 V2) is a set of objectively analyzed (1° grid) climatological fields of *in situ* temperature, salinity and other variables provided at standard depth levels for annual, seasonal, and monthly compositing periods for the World Ocean. It also includes associated statistical fields of observed oceanographic profile data interpolated to standard depth levels on 5° , 1° , and 0.25° grids. We use these fields in complement to ISAS to characterize the climatological fields (annual mean and std) at the match-up pairs location and date.

2.4 Overview of the Match-ups generation method

The match-up production is basically a three steps process:

1. preparation of the input *in situ* and satellite data, and,
2. co-localization of satellite products with *in situ* SSS measurements.
3. co-localization of the *in situ*/satellite pair with auxiliary information.

In the following, we successively detail the approaches taken for these different steps.

2.4.1 *In situ*/Satellite data filtering

The first step consists in filtering Surface drifters *in situ* data using the quality flags as described in 2.2 so that only valid salinity data remain in the final match-up files.

For high-spatial resolution *in situ* SSS measurements such as the Thermo-SalinoGraph (TSG) SSS data, as well as SSS data from surface drifters, an additional spatial filtering step is performed on the *in situ* data that will be in fine compared to the satellite SSS products. If R_{sat} is the spatial resolution of the satellite SSS product (L2 to L3-L4), the *in situ* data are spatially low pass filtered using a running median filter with a window width= R_{sat} to try to minimize the spatial representativeness uncertainty when comparing to the lower spatial resolution of the satellite SSS product. Both original and filtered *in situ* data are finally stored in the MDB files.

Only for satellite L2 SSS data, a third step consist in filtering spurious data using the flags and associated recommendation as provided by the official data centers and described in 2.1.

2.4.2 *In situ*/Satellite Co-localization

In this step, each SSS satellite acquisition is co-localized with the filtered *in situ* measurements. The method used for co-localization differ if the satellite SSS is a swath product (so-called Level 2-types) or a time-space composite product (so-called Level 3/level 4-types).

- For L2 SSS swath data :

If R_{sat} is the spatial resolution of the satellite swath SSS product, for each *in situ* data sample collected in the Pi-MEP database, the platform searches for all satellite SSS data found at grid nodes located within a radius of $R_{sat}/2$ from the *in situ* data location and acquired with a time-lag from the *in situ* measurement date that is less or equal than ± 12 hours. If several satellite SSS samples are found to meet these criteria, the final satellite SSS match-up point is selected to be the closest in time from the *in situ* data measurement date. The final spatial and temporal lags between the *in situ* and satellite data are stored in the MDB files.

- For L3 and L4 composite SSS products :

If R_{sat} is the spatial resolution of the composite satellite SSS product and D the period over which the composite product was built (e.g., periods of 1, 7, 8, 9, 10, 18 days, 1 month, etc..) with central time t_o , for each *in situ* data sample collected in the Pi-MEP database during period D, the platform searches for all satellite SSS data of the composite product found at grid nodes located within a radius of $R_{sat}/2$ from the *in situ* data location. If several satellite SSS product samples are found to meet these criteria, the final satellite SSS match-up point is chosen to be the composite SSS with central time t_o which is the closest in time from the *in situ* data measurement date. The final spatial and temporal lags between the *in situ* and satellite data are stored in the MDB files.

2.4.3 MDB pair Co-localization with auxiliary data and complementary information

MDB data consist of satellite and *in situ* SSS pairs but also of auxiliary geophysical parameters such as local and history of wind speed and rain rates, as well as various information (climatology, distance to coast, mixed layer depth, barrier layer thickness, etc) that can be derived from *in situ* data and which are included in the final match-up files. The collocation of auxiliary parameters and additional information is done for each *in situ* SSS measurement contained in the match-up files as follows :

If t_{insitu} is the time/date at which the *in situ* measurement is performed, we collect:

- The [ASCAT](#) wind speed product of the same day than t_{insitu} found at the ASCAT $1/4^\circ$ grid node with closest distance from the *in situ* data location and the time series of the ASCAT wind speed at the same node for the 10 days prior the *in situ* measurement day.
- If the *in situ* data is located within the 60°N - 60°S band, we select the [CMORPH](#) 3-hourly product the closest in time from t_{insitu} and found at the CMORPH $1/4^\circ$ grid node with closest distance from the *in situ* data location. We then store the time series of the CMORPH rain rate at the same node for the 10 days prior the *in situ* measurement time.

For the given month/year of the *in situ* data, we select the [ISAS](#) and [WOA](#) fields for the same month (and same year for ISAS fields) and take the SSS analysis (monthly mean, std) found at the closest grid node from the *in situ* measurement.

The distance from the *in situ* SSS data location to the nearest coast is evaluated and provided in km. We use a distance-to-coast map at $1/4^\circ$ resolution where small islands have been removed.

When vertical profiles of salinity (S) and temperature (T) are made available from the *in situ* measurements used to build the match-up (Argo or sea mammals), the following variables are included into each satellite/*in situ* match-up file:

1. The vertical distribution of pressure at which the profile were measured,
2. The vertical S(z) and T(z) profiles,
3. The vertical potential density anomaly profile $\sigma_0(z)$,
4. The Mixed Layer Depth (MLD). The MLD is defined here as the depth where the potential density has increased from the reference depth (10 meter) by a threshold equivalent to 0.2°C decrease in temperature at constant salinity: $\sigma_0 = \sigma_{010m} + \Delta\sigma_0$ with $\Delta\sigma_0 = \sigma_0(\theta_{10m} - 0.2, S_{10m}) - \sigma_0(\theta_{10m}, S_{10m})$ where θ_{10m} and S_{10m} are the temperature and salinity at the reference depth (i.e. 10 m) ([de Boyer Montégut et al. \(2004\)](#), [de Boyer Montégut et al. \(2007\)](#)).

5. The Top of the Thermocline Depth (TTD) is defined as the depth at which temperature decreases from its 10 m value by 0.2°C.
6. The Barrier Layer if present, is defined as the intermediate layer between the top of the thermocline and the bottom of the density mixed-layer and its thickness (BLT) is defined as the difference between the MLD and the TTD.
7. The vertical profile of the buoyancy frequency $N^2(z)$

The resulting match-ups files are serialized as NetCDF-4 files whose structure depends on the origin of the *in situ* data and is described in section 2.4.4.

2.4.4 Content of the Match-Up NetCDF files

```
netcdf pimep-mdb-smos-l3-catds-cpdc-v321-l2q-drifter_TIMEID_v01 {
```

```
dimensions:
```

```
    TIME_SAT = UNLIMITED ; // (1 currently)
    TIME_DRIFTER = 199 ;
    N_DAYS_WIND = 10 ;
    N_3H_RAIN = 80 ;
```

```
variables:
```

```
float DATE_DRIFTER(TIME_DRIFTER) ;
DATE_DRIFTER:long_name = "Date of drifter" ;
DATE_DRIFTER:units = "days since 1990-01-01 00:00:00" ;
DATE_DRIFTER:standard_name = "time" ;
DATE_DRIFTER:_FillValue = -999.f ;
float LATITUDE_DRIFTER(TIME_DRIFTER) ;
LATITUDE_DRIFTER:long_name = "Latitude of drifter" ;
LATITUDE_DRIFTER:units = "degrees_north" ;
LATITUDE_DRIFTER:valid_min = -90. ;
LATITUDE_DRIFTER:valid_max = 90. ;
LATITUDE_DRIFTER:standard_name = "latitude" ;
LATITUDE_DRIFTER:_FillValue = -999.f ;
float LONGITUDE_DRIFTER(TIME_DRIFTER) ;
LONGITUDE_DRIFTER:long_name = "Longitude of drifter" ;
LONGITUDE_DRIFTER:units = "degrees_east" ;
LONGITUDE_DRIFTER:valid_min = -180. ;
LONGITUDE_DRIFTER:valid_max = 180. ;
LONGITUDE_DRIFTER:standard_name = "longitude" ;
LONGITUDE_DRIFTER:_FillValue = -999.f ;
float SSS_DRIFTER(TIME_DRIFTER) ;
SSS_DRIFTER:long_name = "Drifter SSS" ;
SSS_DRIFTER:units = "1" ;
SSS_DRIFTER:salinity_scale = "Practical Salinity Scale(PSS-78)" ;
SSS_DRIFTER:standard_name = "sea_water_salinity" ;
SSS_DRIFTER:_FillValue = -999.f ;
float SST_DRIFTER(TIME_DRIFTER) ;
SST_DRIFTER:long_name = "Drifter SST" ;
SST_DRIFTER:units = "degree Celsius" ;
```

```

        SST_DRIFTER:standard_name = "sea_water_temperature" ;
        SST_DRIFTER:FillValue = -999.f ;
float SSS_DRIFTER_FILTERED(TIME_DRIFTER) ;
        SSS_DRIFTER_FILTERED:long_name = "Drifter SSS median filtered at satellite spatial
resolution" ;
        SSS_DRIFTER_FILTERED:units = "1" ;
        SSS_DRIFTER_FILTERED:salinity_scale = "Practical Salinity Scale(PSS-78)" ;
        SSS_DRIFTER_FILTERED:standard_name = "sea_water_salinity" ;
        SSS_DRIFTER_FILTERED:FillValue = -999.f ;
float SST_DRIFTER_FILTERED(TIME_DRIFTER) ;
        SST_DRIFTER_FILTERED:long_name = "Drifter SST median filtered at satellite spatial
resolution" ;
        SST_DRIFTER_FILTERED:units = "degree Celsius" ;
        SST_DRIFTER_FILTERED:standard_name = "sea_water_temperature" ;
        SST_DRIFTER_FILTERED:FillValue = -999.f ;
float DISTANCE_TO_COAST_DRIFTER(TIME_DRIFTER) ;
        DISTANCE_TO_COAST_DRIFTER:long_name = "Distance to coasts at drifter location"
;
        DISTANCE_TO_COAST_DRIFTER:units = "km" ;
        DISTANCE_TO_COAST_DRIFTER:FillValue = -999.f ;
float PLATFORM_NUMBER_DRIFTER(TIME_DRIFTER) ;
        PLATFORM_NUMBER_DRIFTER:long_name = "drifter unique identifier" ;
        PLATFORM_NUMBER_DRIFTER:conventions = "WMO float identifier : A9IIIII" ;
        PLATFORM_NUMBER_DRIFTER:units = "1" ;
        PLATFORM_NUMBER_DRIFTER:FillValue = -999.f ;
float DATE_Satellite_product(TIME_Sat) ;
        DATE_Satellite_product:long_name = "Central time of satellite SSS file" ;
        DATE_Satellite_product:units = "days since 1990-01-01 00:00:00" ;
        DATE_Satellite_product:standard_name = "time" ;
float LATITUDE_Satellite_product(TIME_DRIFTER) ;
        LATITUDE_Satellite_product:long_name = "Satellite product latitude at drifter location"
;
        LATITUDE_Satellite_product:units = "degrees_north" ;
        LATITUDE_Satellite_product:valid_min = -90. ;
        LATITUDE_Satellite_product:valid_max = 90. ;
        LATITUDE_Satellite_product:standard_name = "latitude" ;
        LATITUDE_Satellite_product:FillValue = -999.f ;
float LONGITUDE_Satellite_product(TIME_DRIFTER) ;
        LONGITUDE_Satellite_product:long_name = "Satellite product longitude at drifter loca-
tion" ;
        LONGITUDE_Satellite_product:units = "degrees_east" ;
        LONGITUDE_Satellite_product:valid_min = -180. ;
        LONGITUDE_Satellite_product:valid_max = 180. ;
        LONGITUDE_Satellite_product:standard_name = "longitude" ;
        LONGITUDE_Satellite_product:FillValue = -999.f ;
float SSS_Satellite_product(TIME_DRIFTER) ;
        SSS_Satellite_product:long_name = "Satellite product SSS at drifter location" ;
        SSS_Satellite_product:units = "1" ;
        SSS_Satellite_product:salinity_scale = "Practical Salinity Scale(PSS-78)" ;
    
```

```

        SSS_Satellite_product:standard_name = "sea_surface_salinity" ;
        SSS_Satellite_product:_FillValue = -999.f ;
float SST_Satellite_product(TIME_DRIFTER) ;
        SST_Satellite_product:long_name = "Satellite product SST at drifter location" ;
        SST_Satellite_product:units = "degree Celsius" ;
        SST_Satellite_product:standard_name = "sea_surface_temperature" ;
        SST_Satellite_product:_FillValue = -999.f ;
float Spatial_lags(TIME_DRIFTER) ;
        Spatial_lags:long_name = "Spatial lag between drifter location and satellite SSS product
pixel center" ;
        Spatial_lags:units = "km" ;
        Spatial_lags:_FillValue = -999.f ;
float Time_lags(TIME_DRIFTER) ;
        Time_lags:long_name = "Temporal lag between drifter time and satellite SSS product cen-
tral time" ;
        Time_lags:units = "days" ;
        Time_lags:_FillValue = -999.f ;
float ROSSBY_RADIUS_at_DRIFTER(TIME_DRIFTER) ;
        ROSSBY_RADIUS_at_DRIFTER:long_name = "Baroclinic Rossby radius of deformation
(Chelton et al., 1998) at drifter location" ;
        ROSSBY_RADIUS_at_DRIFTER:units = "km" ;
        ROSSBY_RADIUS_at_DRIFTER:_FillValue = -999.f ;
float Ascet_daily_wind_at_DRIFTER(TIME_DRIFTER) ;
        Ascet_daily_wind_at_DRIFTER:long_name = "Daily Ascet wind speed module at drifter
location" ;
        Ascet_daily_wind_at_DRIFTER:units = "m/s" ;
        Ascet_daily_wind_at_DRIFTER:_FillValue = -999.f ;
float CMORPH_3h_Rain_Rate_at_DRIFTER(TIME_DRIFTER) ;
        CMORPH_3h_Rain_Rate_at_DRIFTER:long_name = "3-hourly CMORPH rain rate at drifter
location" ;
        CMORPH_3h_Rain_Rate_at_DRIFTER:units = "mm/3h" ;
        CMORPH_3h_Rain_Rate_at_DRIFTER:_FillValue = -999.f ;
float Ascet_10_prior_days_wind_at_DRIFTER(TIME_DRIFTER, N_DAYS_WIND) ;
        Ascet_10_prior_days_wind_at_DRIFTER:long_name = "Prior 10 days time series of Ascet
wind speed module at drifter location" ;
        Ascet_10_prior_days_wind_at_DRIFTER:units = "m/s" ;
        Ascet_10_prior_days_wind_at_DRIFTER:_FillValue = -999.f ;
float CMORPH_10_prior_days_Rain_Rate_at_DRIFTER(TIME_DRIFTER, N_3H_RAIN) ;
        CMORPH_10_prior_days_Rain_Rate_at_DRIFTER:long_name = "Prior 10 days times series
of 3-hourly CMORPH Rain Rate at drifter location" ;
        CMORPH_10_prior_days_Rain_Rate_at_DRIFTER:units = "mm/3h" ;
        CMORPH_10_prior_days_Rain_Rate_at_DRIFTER:_FillValue = -999.f ;
float SSS_ISAS_at_DRIFTER(TIME_DRIFTER) ;
        SSS_ISAS_at_DRIFTER:long_name = "ISAS SSS (5m depth) at drifter location" ;
        SSS_ISAS_at_DRIFTER:units = "1" ;
        SSS_ISAS_at_DRIFTER:salinity_scale = "Practical Salinity Scale(PSS-78)" ;
        SSS_ISAS_at_DRIFTER:standard_name = "sea_water_salinity" ;
        SSS_ISAS_at_DRIFTER:_FillValue = -999.f ;
float SSS_PCTVAR_ISAS_at_DRIFTER(TIME_DRIFTER) ;
    
```

```

        SSS_PCTVAR_ISAS_at_DRIFTER:long_name = "Error on ISAS SSS (5m depth) at drifter
location (% variance)" ;
        SSS_PCTVAR_ISAS_at_DRIFTER:units = "%" ;
        SSS_PCTVAR_ISAS_at_DRIFTER:FillValue = -999.f ;
float SSS_WOA13_at_DRIFTER(TIME_DRIFTER) ;
        SSS_WOA13_at_DRIFTER:long_name = "WOA 2013 (DECAV-1deg) SSS (0m depth) at
drifter location" ;
        SSS_WOA13_at_DRIFTER:units = "1" ;
        SSS_WOA13_at_DRIFTER:salinity_scale = "Practical Salinity Scale(PSS-78)" ;
        SSS_WOA13_at_DRIFTER:standard_name = "sea_surface_salinity" ;
        SSS_WOA13_at_DRIFTER:FillValue = -999.f ;
float SSS_STD_WOA13_at_DRIFTER(TIME_DRIFTER) ;
        SSS_STD_WOA13_at_DRIFTER:long_name = "WOA 2013 (DECAV-1deg) SSS STD (0m
depth) at drifter location " ;
        SSS_STD_WOA13_at_DRIFTER:units = "1" ;
        SSS_STD_WOA13_at_DRIFTER:FillValue = -999.f ;
float SSS_ISAS15_at_DRIFTER(N_prof) ;
        SSS_ISAS15_at_DRIFTER:long_name = "Monthly ISAS-15 SSS (5m depth) at drifter loca-
tion" ;
        SSS_ISAS15_at_DRIFTER:units = "1" ;
        SSS_ISAS15_at_DRIFTER:salinity_scale = "Practical Salinity Scale (PSS-78)" ;
        SSS_ISAS15_at_DRIFTER:standard_name = "sea_water_salinity" ;
        SSS_ISAS15_at_DRIFTER:FillValue = -999.f ;
float SSS_PCTVAR_ISAS15_at_DRIFTER(N_prof) ;
        SSS_PCTVAR_ISAS15_at_DRIFTER:long_name = "Error on monthly ISAS-15 SSS (5m
depth) at drifter location (% variance)" ;
        SSS_PCTVAR_ISAS15_at_DRIFTER:units = "%" ;
        SSS_PCTVAR_ISAS15_at_DRIFTER:FillValue = -999.f ;
float SSS_WOA18_at_DRIFTER(N_prof) ;
        SSS_WOA18_at_DRIFTER:long_name = "Monthly WOA 2018 (DECAV-1deg) SSS (0m
depth) at drifter location" ;
        SSS_WOA18_at_DRIFTER:units = "1" ;
        SSS_WOA18_at_DRIFTER:salinity_scale = "Practical Salinity Scale (PSS-78)" ;
        SSS_WOA18_at_DRIFTER:standard_name = "sea_surface_salinity" ;
        SSS_WOA18_at_DRIFTER:FillValue = -999.f ;
float SSS_STD_WOA18_at_DRIFTER(N_prof) ;
        SSS_STD_WOA18_at_DRIFTER:long_name = "Monthly WOA 2018 (DECAV-1deg) SSS
STD (0m depth) at drifter location " ;
        SSS_STD_WOA18_at_DRIFTER:units = "1" ;
        SSS_STD_WOA18_at_DRIFTER:FillValue = -999.f ;
float SEA_ICE_CONCENTRATION_at_DRIFTER(N_prof) ;
        SEA_ICE_CONCENTRATION_at_DRIFTER:long_name = "Daily sea ice area fraction (EU-
METSAT OSI-SAF OSI-450) at drifter location (%)" ;
        SEA_ICE_CONCENTRATION_at_DRIFTER:units = "1" ;
        SEA_ICE_CONCENTRATION_at_DRIFTER:standard_name = "sea_ice_area_fraction" ;
        SEA_ICE_CONCENTRATION_at_DRIFTER:FillValue = -999.f ;
float CCMP_6h_Wind_Speed_at_DRIFTER(N_prof) ;
        CCMP_6h_Wind_Speed_at_DRIFTER:long_name = "6-hourly CCMP wind speed at drifter
location" ;
    
```



```

        CCMP_6h_Wind_Speed_at_DRIFTER:units = "m s-1" ;
        CCMP_6h_Wind_Speed_at_DRIFTER:standard_name = "wind_speed" ;
        CCMP_6h_Wind_Speed_at_DRIFTER:FillValue = -999.f ;
float CCMP_10_prior_days_Wind_Speed_at_DRIFTER(N_prof, N_DAYS_WIND_CCMP) ;
        CCMP_10_prior_days_Wind_Speed_at_DRIFTER:long_name = "Prior 10 days time series of
        CCMP wind speed at drifter location" ;
        CCMP_10_prior_days_Wind_Speed_at_DRIFTER:units = "m s-1" ;
        CCMP_10_prior_days_Wind_Speed_at_DRIFTER:standard_name = "wind_speed" ;
        CCMP_10_prior_days_Wind_Speed_at_DRIFTER:FillValue = -999.f ;
float CDM_GLOBCOLOUR_at_DRIFTER(N_prof) ;
        CDM_GLOBCOLOUR_at_DRIFTER:long_name = "8-day Coloured dissolved and detrital
        organic materials - mean of the binned pixels at drifter location" ;
        CDM_GLOBCOLOUR_at_DRIFTER:units = "m-1" ;
        CDM_GLOBCOLOUR_at_DRIFTER:standard_name = "volume_absorption_coefficient_of_radiative_flux_in_sea_wat
;
        CDM_GLOBCOLOUR_at_DRIFTER:FillValue = -999.f ;
float CHL1_GLOBCOLOUR_at_DRIFTER(N_prof) ;
        CHL1_GLOBCOLOUR_at_DRIFTER:long_name = "8-day Chlorophyll concentration - mean
        of the binned pixels at drifter location" ;
        CHL1_GLOBCOLOUR_at_DRIFTER:units = "mg m-3" ;
        CHL1_GLOBCOLOUR_at_DRIFTER:standard_name = "mass_concentration_of_chlorophyll_a_in_sea_water"
;
        CHL1_GLOBCOLOUR_at_DRIFTER:FillValue = -999.f ;
float EVAPORATION_OAFLUX_at_DRIFTER(N_prof) ;
        EVAPORATION_OAFLUX_at_DRIFTER:long_name = "Daily mean evaporation rate (OAFlux)
        at drifter location" ;
        EVAPORATION_OAFLUX_at_DRIFTER:units = "cm year-1" ;
        EVAPORATION_OAFLUX_at_DRIFTER:FillValue = -999.f ;
float SSS_SCRIPPS_at_DRIFTER(N_prof) ;
        SSS_SCRIPPS_at_DRIFTER:long_name = "Argo gridded monthly mean SSS (0m depth)
        from SCRIPPS (Roemmich-Gilson) at drifter location" ;
        SSS_SCRIPPS_at_DRIFTER:units = "1" ;
        SSS_SCRIPPS_at_DRIFTER:salinity_scale = "Practical Salinity Scale (PSS-78)" ;
        SSS_SCRIPPS_at_DRIFTER:standard_name = "sea_water_salinity" ;
        SSS_SCRIPPS_at_DRIFTER:FillValue = -999.f ;
float SSS_IPRC_at_DRIFTER(N_prof) ;
        SSS_IPRC_at_DRIFTER:long_name = "Argo gridded monthly mean SSS (0m depth) from
        IPRC at drifter location" ;
        SSS_IPRC_at_DRIFTER:units = "1" ;
        SSS_IPRC_at_DRIFTER:salinity_scale = "Practical Salinity Scale (PSS-78)" ;
        SSS_IPRC_at_DRIFTER:standard_name = "sea_water_salinity" ;
        SSS_IPRC_at_DRIFTER:FillValue = -999.f ;
float SST_AVHRR_at_DRIFTER(N_prof) ;
        SST_AVHRR_at_DRIFTER:long_name = "Daily OI AVHRR-only v2 SST (Reynolds et al.,
        2007) at drifter location" ;
        SST_AVHRR_at_DRIFTER:units = "degree Celsius" ;
        SST_AVHRR_at_DRIFTER:standard_name = "sea_water_temperature" ;
        SST_AVHRR_at_DRIFTER:FillValue = -999.f ;
float U_EKMAN_GLOBCURRENT_at_DRIFTER(N_prof) ;
    
```

```

    U_EKMAN_GLOBCURRENT_at_DRIFTER:long_name = "15m depth Ekman current ve-
    locity: zonal component at drifter location" ;
    U_EKMAN_GLOBCURRENT_at_DRIFTER:units = "m s-1" ;
    U_EKMAN_GLOBCURRENT_at_DRIFTER:FillValue = -999.f ;
float V_EKMAN_GLOBCURRENT_at_DRIFTER(N_prof) ;
    V_EKMAN_GLOBCURRENT_at_DRIFTER:long_name = "15m depth Ekman current ve-
    locity: meridian component at drifter location" ;
    V_EKMAN_GLOBCURRENT_at_DRIFTER:units = "m s-1" ;
    V_EKMAN_GLOBCURRENT_at_DRIFTER:FillValue = -999.f ;
float U_GEOSTROPHIC_GLOBCURRENT_at_DRIFTER(N_prof) ;
    U_GEOSTROPHIC_GLOBCURRENT_at_DRIFTER:long_name = "Absolute geostrophic
    velocity: zonal component at drifter location" ;
    U_GEOSTROPHIC_GLOBCURRENT_at_DRIFTER:units = "m s-1" ;
    U_GEOSTROPHIC_GLOBCURRENT_at_DRIFTER:FillValue = -999.f ;
float V_GEOSTROPHIC_GLOBCURRENT_at_DRIFTER(N_prof) ;
    V_GEOSTROPHIC_GLOBCURRENT_at_DRIFTER:long_name = "Absolute geostrophic
    velocity: meridian component at drifter location" ;
    V_GEOSTROPHIC_GLOBCURRENT_at_DRIFTER:units = "m s-1" ;
    V_GEOSTROPHIC_GLOBCURRENT_at_DRIFTER:FillValue = -999.f ;

// global attributes:
:Conventions = "CF-1.6" ;
:title = "Surface drifters Match-Up Database" ;
:Satellite_product_name = "SMOS SSS L2Q v321 - 0.25 Deg (CATDS-CPDC)" ;
:Satellite_product_spatial_resolution = "25 km" ;
:Satellite_product_temporal_resolution = "55 min" ;
:Satellite_product_filename = "MIR-CSF2QA/2010/012/SM-RE06.MIR-CSF2QA.20100112T000000.20100112T235959.321.001.7.tgz"
;

:Match-Up_spatial_window_radius_in_km = 12.5;
:Match-Up_temporal_window_radius_in_days = 0.5;
:start_time = "20100114T000005Z" ;
:stop_time = "20100118T235026Z" ;
:northernmost_latitude = 77.676f ;
:southernmost_latitude = -66.423f ;
:westernmost_longitude = -179.219f ;
:easternmost_longitude = 179.199f ;
:geospatial_lat_units = "degrees north" ;
:geospatial_lat_resolution = "25 km" ;
:geospatial_lon_units = "degrees east" ;
:geospatial_lon_resolution = "25 km" ;
:institution = "ESA-IFREMER-ODL-OCEANSCOPE" ;
:project_name = "SMOS Pilot-Mission Exploitation Platform (Pi-MEP) for salinity" ;
:project_url = "https://www.salinity-pimep.org" ;
:license = "Pi-MEP data use is free and open" ;
:product_version = "1.0" ;
:keywords = "Oceans > Ocean Salinity > Sea Surface Salinity" ;
:acknowledgment = "Please acknowledge the use of these data with the following state-
ment: These data were provided by the SMOS Pilot-Mission Exploitation Platform (Pi-MEP)
for salinity" ;

```

```

:SOURCE = "MIR_CSF2QA/2010/012/SM_RE06_MIR_CSF2QA_20100112T000000_20100112T235959_321_001_7.tgz" ;
:In_situ_data_source = "https://skyros.locean-ipsl.upmc.fr/~smos/drifters/valid/"
;
:references = "https://www.salinity-pimep.org" ;
:history = "Processed on 2018-04-18 using MDB_generator" ;
:date_created = "2018-04-18 17:09:30" ;
}
    
```

2.5 MDB characteristics for the particular *in situ*/satellite pairs

2.5.1 Number of paired SSS data as a function of time and distance to coast

Figure 1 shows the time (a) and distance to coast (b) distributions of the match-ups between Surface drifters and SMOS SSS L2Q v321 - 0.25 Deg (CATDS-CPDC) for the Tropical Pacific Ocean Pi-MEP region and for the full satellite product period.

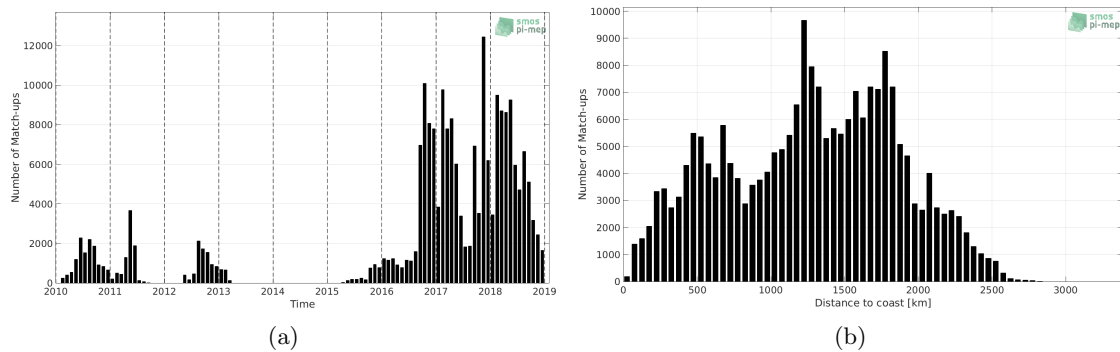


Figure 1: Number of match-ups between Surface drifters and SMOS SSS L2Q v321 - 0.25 Deg (CATDS-CPDC) SSS as a function of time (a) and as function of the distance to coast (b) over the Tropical Pacific Ocean Pi-MEP region and for the full satellite product period.

2.5.2 Histograms of the SSS match-ups

Figure 2 shows the SSS distribution of Surface drifters (a) and SMOS SSS L2Q v321 - 0.25 Deg (CATDS-CPDC) (b) considering all match-up pairs per bins of 0.1 over the Tropical Pacific Ocean Pi-MEP region and for the full satellite product period.

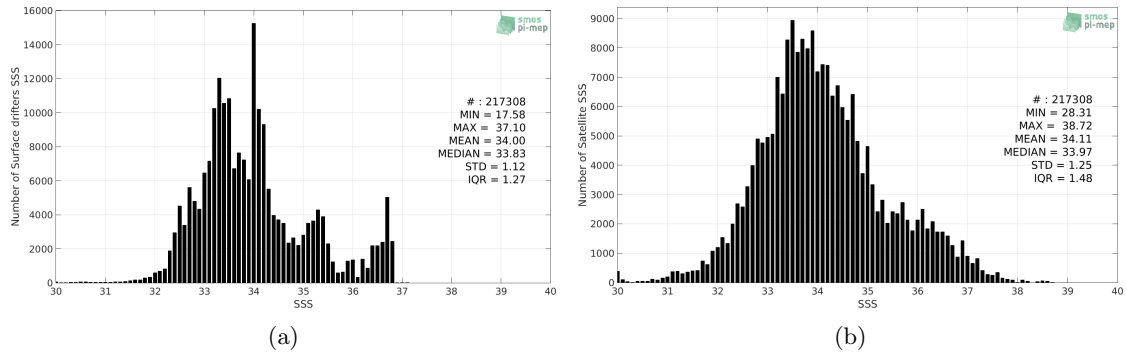


Figure 2: Histograms of SSS from Surface drifters (a) and SMOS SSS L2Q v321 - 0.25 Deg (CATDS-CPDC) (b) considering all match-up pairs per bins of 0.1 over the Tropical Pacific Ocean Pi-MEP region and for the full satellite product period.

2.5.3 Spatial Distribution of Match-ups

The number of SSS match-ups between Surface drifters SSS and the SMOS SSS L2Q v321 - 0.25 Deg (CATDS-CPDC) SSS product for the Tropical Pacific Ocean Pi-MEP region over $1^\circ \times 1^\circ$ boxes and for the full satellite product period is shown in Figure 3.

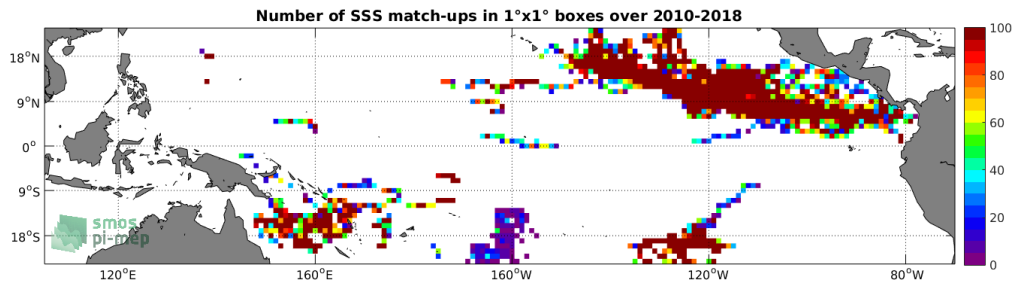


Figure 3: Number of SSS match-ups between Surface drifters SSS and the SMOS SSS L2Q v321 - 0.25 Deg (CATDS-CPDC) SSS product for the Tropical Pacific Ocean Pi-MEP region over $1^\circ \times 1^\circ$ boxes and for the full satellite product period.

2.5.4 Histograms of the spatial and temporal lags of the match-ups pairs

Figure 4 reveals the spatial (left) and temporal (right) lags between the location/time of the Surface drifters measurement and the position/date of the corresponding SMOS SSS L2Q v321 - 0.25 Deg (CATDS-CPDC) SSS pixel of all match-ups pairs.

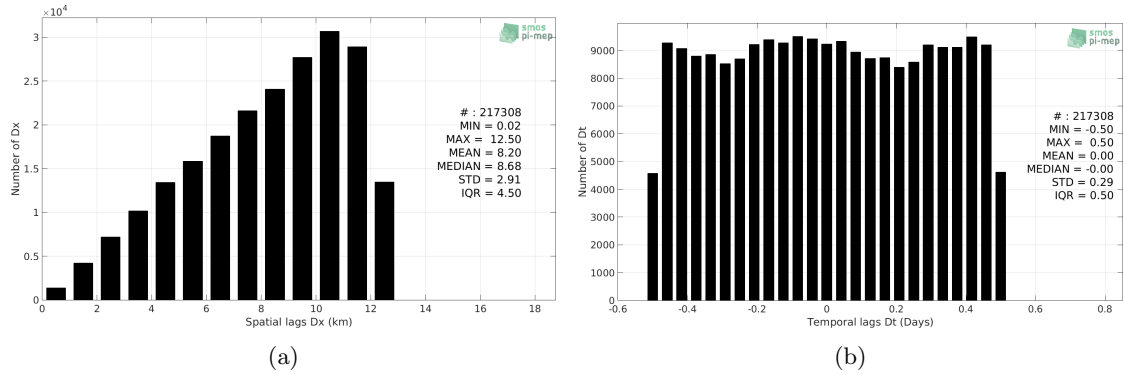


Figure 4: Histograms of the spatial (a) and temporal (b) lags between the location/time of the Surface drifters measurement and the date of the corresponding SMOS SSS L2Q v321 - 0.25 Deg (CATDS-CPDC) SSS pixel.

3 MDB file Analyses

3.1 Spatial Maps of the Temporal mean and Std of *in situ* and satellite SSS and of the difference (Δ SSS)

In Figure 5, we show maps of temporal mean (left) and standard deviation (right) of the SMOS SSS L2Q v321 - 0.25 Deg (CATDS-CPDC) (top) and of the Surface drifters *in situ* dataset at the collected Pi-MEP match-up pairs. The temporal mean and std are gridded over the full satellite product period and over spatial boxes of size $1^\circ \times 1^\circ$.

At the bottom of Figure 5, the temporal mean (left) and standard deviation (right) of the differences between the satellite SSS product and *in situ* data found at match-up pairs, namely Δ SSS(Satellite -Surface drifters), is also gridded over the full satellite product period and over spatial boxes of size $1^\circ \times 1^\circ$.

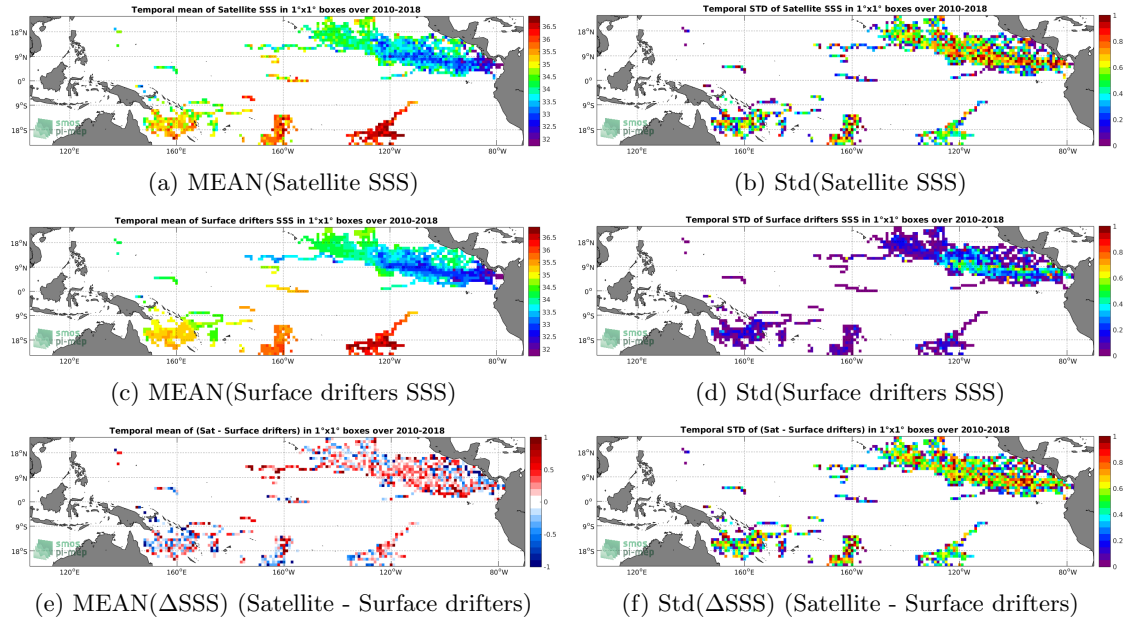


Figure 5: Temporal mean (left) and Std (right) of SSS from SMOS SSS L2Q v321 - 0.25 Deg (CATDS-CPDC) (top), Surface drifters (middle), and of Δ SSS (Satellite - Surface drifters). Only match-up pairs are used to generate these maps.

3.2 Time series of the monthly median and Std of *in situ* and satellite SSS and of the difference (Δ SSS)

In the top panel of Figure 6, we show the time series of the monthly median SSS estimated over the full Tropical Pacific Ocean Pi-MEP region for both SMOS SSS L2Q v321 - 0.25 Deg (CATDS-CPDC) satellite SSS product (in black) and the Surface drifters *in situ* dataset (in blue) at the collected Pi-MEP match-up pairs.

In the middle panel of Figure 6, we show the time series of the monthly median of Δ SSS (Satellite - Surface drifters) for the collected Pi-MEP match-up pairs and estimated over the full Tropical Pacific Ocean Pi-MEP region.

In the bottom panel of Figure 6, we show the time series of the monthly standard deviation of Δ SSS (Satellite - Surface drifters) for the collected Pi-MEP match-up pairs and estimated over the full Tropical Pacific Ocean Pi-MEP region.

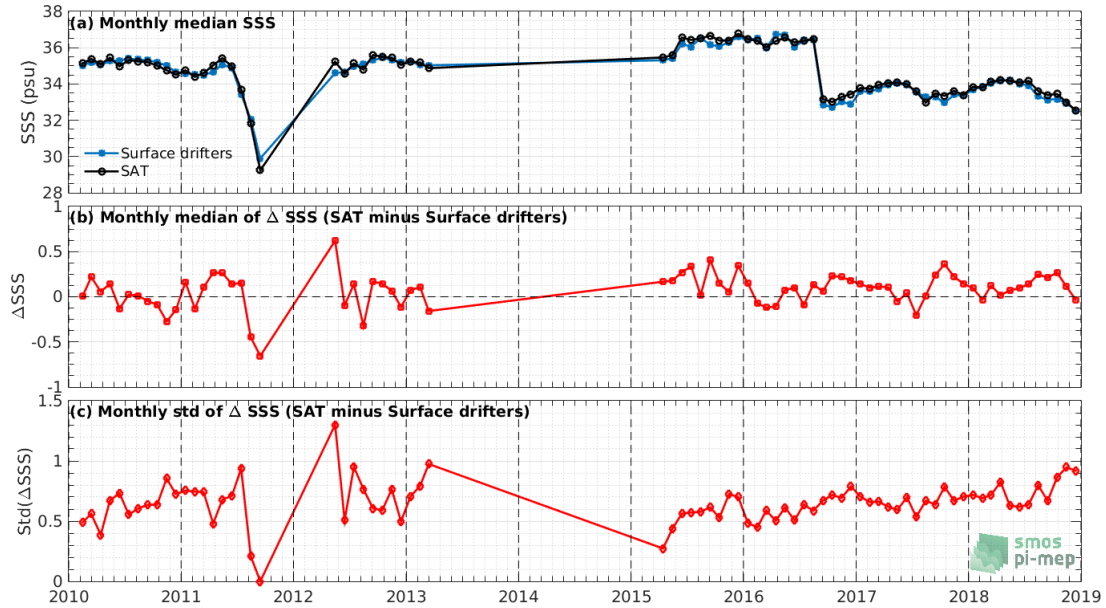


Figure 6: Time series of the monthly median SSS (top), median of Δ SSS (Satellite - Surface drifters) and Std of Δ SSS (Satellite - Surface drifters) over the Tropical Pacific Ocean Pi-MEP region considering all match-ups collected by the Pi-MEP.

3.3 Zonal mean and Std of *in situ* and satellite SSS and of the difference (Δ SSS)

In Figure 7 left panel, we show the zonal mean SSS considering all Pi-MEP match-up pairs for both SMOS SSS L2Q v321 - 0.25 Deg (CATDS-CPDC) satellite SSS product (in black) and the Surface drifters *in situ* dataset (in blue). The full satellite SSS product period is used to derive the mean.

In the right panel of Figure 7, we show the zonal mean of Δ SSS (Satellite - Surface drifters) for all the collected Pi-MEP match-up pairs estimated over the full satellite product period.

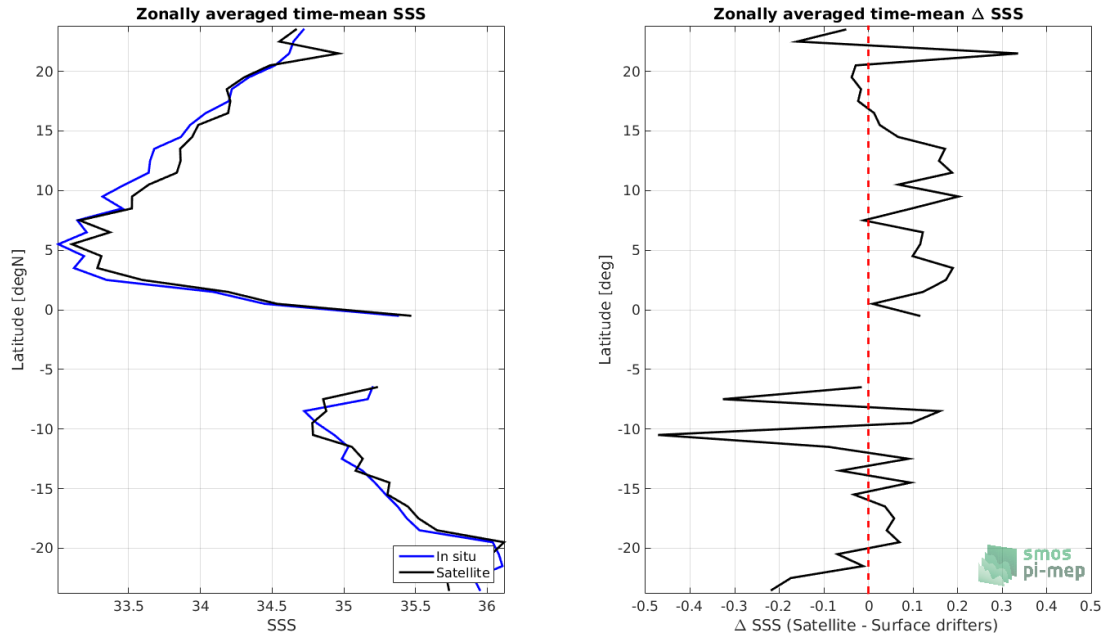


Figure 7: Left panel: Zonal mean SSS from SMOS SSS L2Q v321 - 0.25 Deg (CATDS-CPDC) satellite product (black) and from Surface drifters (blue). Right panel: Zonal mean of Δ SSS (Satellite - Surface drifters) for all the collected Pi-MEP match-up pairs estimated over the full satellite product period.

3.4 Scatterplots of satellite vs *in situ* SSS by latitudinal bands

In Figure 8, contour maps of the concentration of SMOS SSS L2Q v321 - 0.25 Deg (CATDS-CPDC) SSS (y-axis) versus Surface drifters SSS (x-axis) at match-up pairs for different latitude bands: (a) 80°S-80°N, (b) 20°S-20°N, (c) 40°S-20°S and 20°N-40°N and (d) 60°S-40°S and 40°N-60°N. For each plot, the red line shows $x=y$. The black thin and dashed lines indicate a linear fit through the data cloud and the $\pm 95\%$ confidence levels, respectively. The number match-up pairs n , the slope and R^2 coefficient of the linear fit, the root mean square (RMS) and the mean bias between satellite and *in situ* data are indicated for each latitude band in each plots.

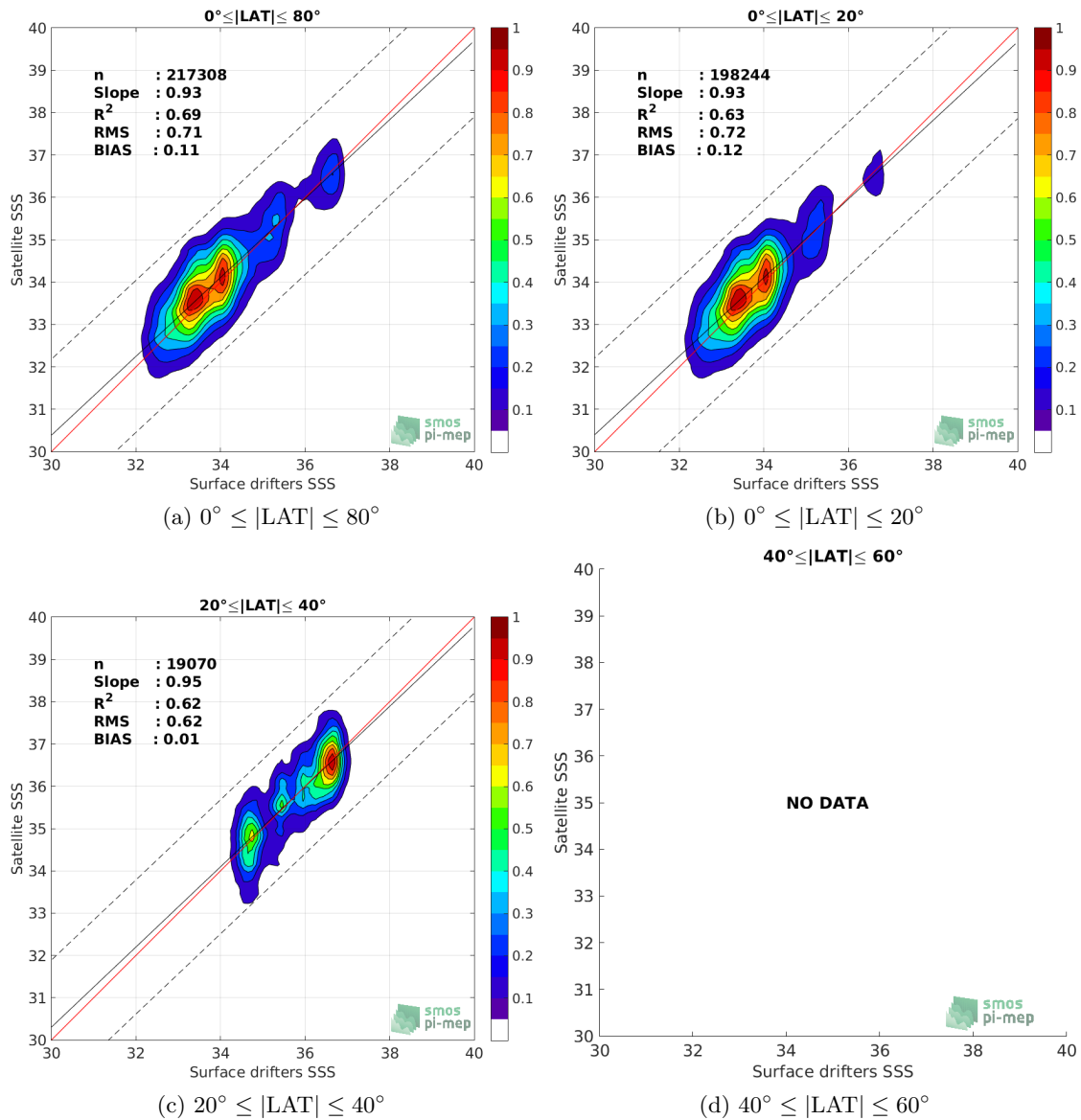


Figure 8: Contour maps of the concentration of SMOS SSS L2Q v321 - 0.25 Deg (CATDS-CPDC) SSS (y-axis) versus Surface drifters SSS (x-axis) at match-up pairs for different latitude bands. For each plot, the red line shows $x=y$. The black thin and dashed lines indicate a linear fit through the data cloud and the $\pm 95\%$ confidence levels, respectively. The number match-up pairs n , the slope and R^2 coefficient of the linear fit, the root mean square (RMS) and the mean bias between satellite and *in situ* data are indicated for each latitude band in each plots.

3.5 Time series of the monthly median and Std of ΔSSS sorted by latitudinal bands

In Figure 9, time series of the monthly median (red curves) of ΔSSS (Satellite - Surface drifters) and ± 1 Std (black vertical thick bars) as function of time for all the collected Pi-MEP match-up

pairs estimated over the Tropical Pacific Ocean Pi-MEP region and for the full satellite product period are shown for different latitude bands: (a) 80°S-80°N, (b) 20°S-20°N, (c) 40°S-20°S and 20°N-40°N and (d) 60°S-40°S and 40°N-60°N.

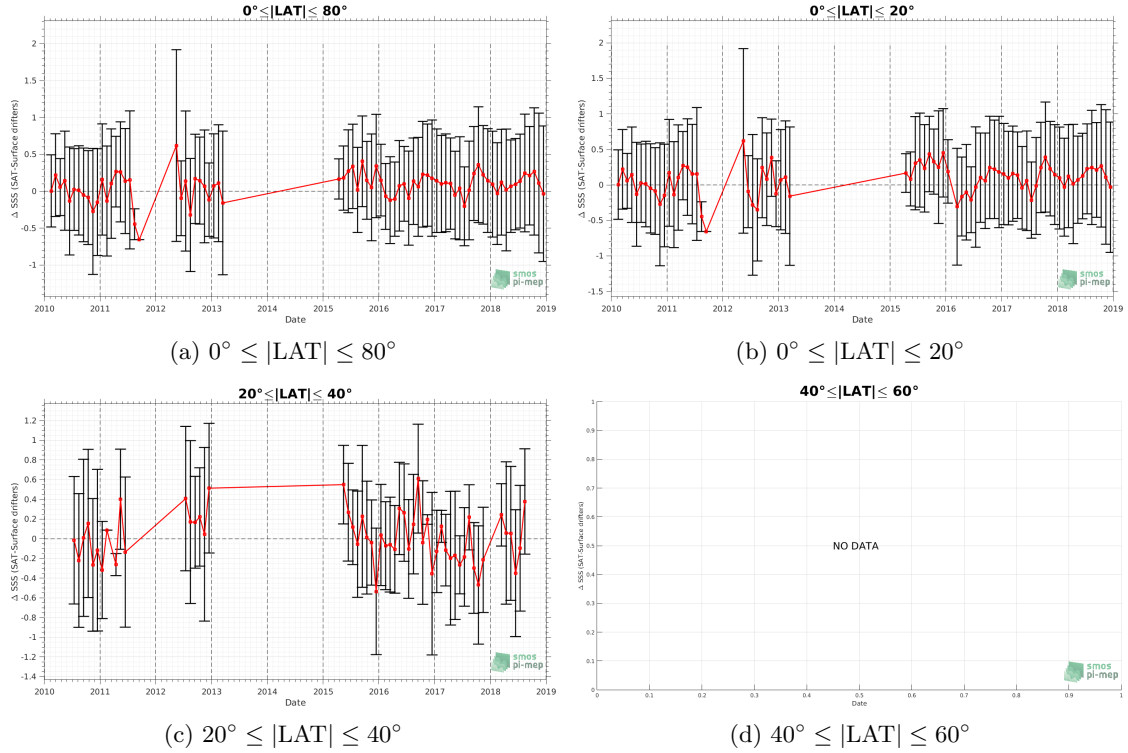


Figure 9: Monthly median (red curves) of ΔSSS (Satellite - Surface drifters) and ± 1 Std (black vertical thick bars) as function of time for all the collected Pi-MEP match-up pairs estimated over the Tropical Pacific Ocean Pi-MEP region and for the full satellite product period are shown for different latitude bands: (a) 80°S-80°N, (b) 20°S-20°N, (c) 40°S-20°S and 20°N-40°N and (d) 60°S-40°S and 40°N-60°N.

3.6 ΔSSS sorted as function of geophysical parameters

In Figure 10, we classify the match-up differences ΔSSS (Satellite - *in situ*) between SMOS SSS L2Q v321 - 0.25 Deg (CATDS-CPDC) and Surface drifters SSS as function of the geophysical conditions at match-up points. The median and std of ΔSSS (Satellite - Surface drifters) is thus evaluated as function of the

- *in situ* SSS values per bins of width 0.2,
- *in situ* SST values per bins of width 1°C,
- ASCAT daily wind values per bins of width 1 m/s,
- CMORPH 3-hourly rain rates per bins of width 1 mm/h, and,
- distance to coasts per bins of width 50 km.
- *in situ* measurement depth (if relevant).

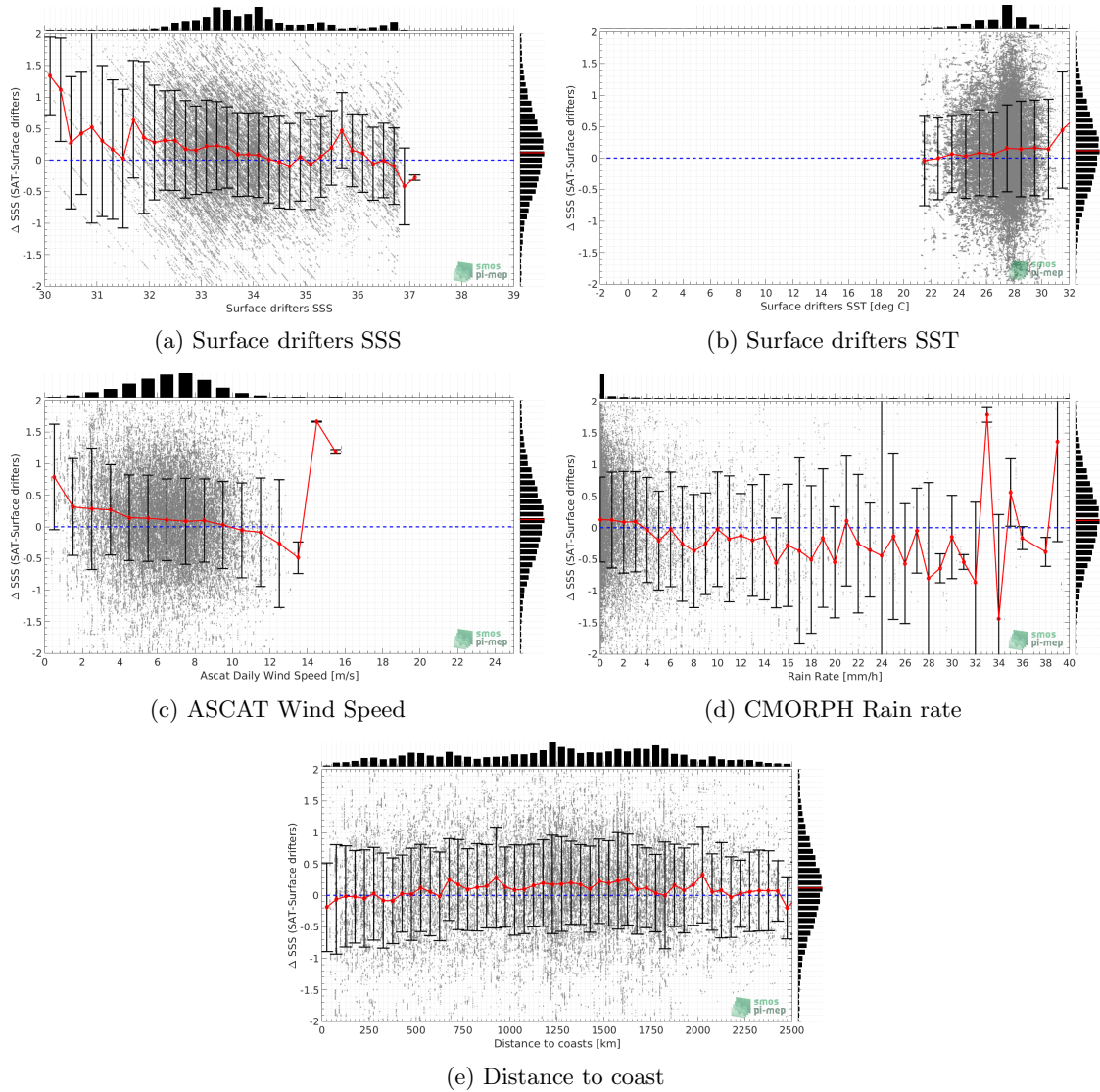


Figure 10: Δ SSS (Satellite - Surface drifters) sorted as function of Surface drifters SSS a), Surface drifters SST b), ASCAT Wind speed c), CMORPH rain rate d) and distance to coast (e). In all plots the median and Std of Δ SSS for each bin is indicated by the red curves and black vertical thick bars (± 1 Std)

3.7 Δ SSS maps and statistics for different geophysical conditions

In Figures 11 and 12, we focus on sub-datasets of the match-up differences Δ SSS (Satellite - *in situ*) between SMOS SSS L2Q v321 - 0.25 Deg (CATDS-CPDC) and Surface drifters for the following specific geophysical conditions:

- **C1**:if the local value at *in situ* location of estimated rain rate is zero, mean daily wind is in the range [3, 12] m/s, the SST is $> 5^\circ\text{C}$ and distance to coast is > 800 km.
- **C2**:if the local value at *in situ* location of estimated rain rate is zero, mean daily wind is

in the range [3, 12] m/s.

- **C3**:if the local value at *in situ* location of estimated rain rate is high (ie. > 1 mm/h) and mean daily wind is low (ie. < 4 m/s).
- **C5**:if the *in situ* data is located where the climatological SSS standard deviation is low (ie. above < 0.2).
- **C6**:if the *in situ* data is located where the climatological SSS standard deviation is high (ie. above > 0.2).

For each of these conditions, the temporal mean (gridded over spatial boxes of size $1^\circ \times 1^\circ$) and the histogram of the difference ΔSSS (Satellite - *in situ*) are presented.

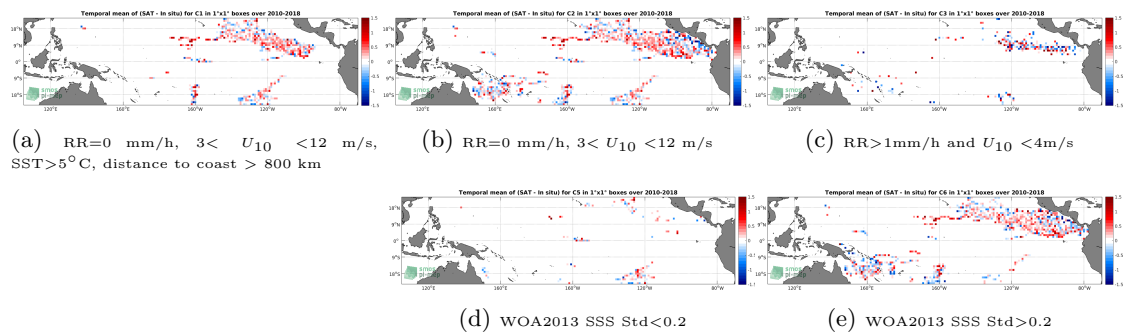


Figure 11: Temporal mean gridded over spatial boxes of size $1^\circ \times 1^\circ$ of ΔSSS (SMOS SSS L2Q v321 - 0.25 Deg (CATDS-CPDC) - Surface drifters) for 5 different subdatasets corresponding to:RR=0 mm/h, $3 < U_{10} < 12$ m/s, SST $>5^\circ$ C, distance to coast > 800 km (a), RR=0 mm/h, $3 < U_{10} < 12$ m/s (b), RR >1 mm/h and $U_{10} < 4$ m/s (c), WOA2013 SSS Std <0.2 (d), WOA2013 SSS Std >0.2 (e).

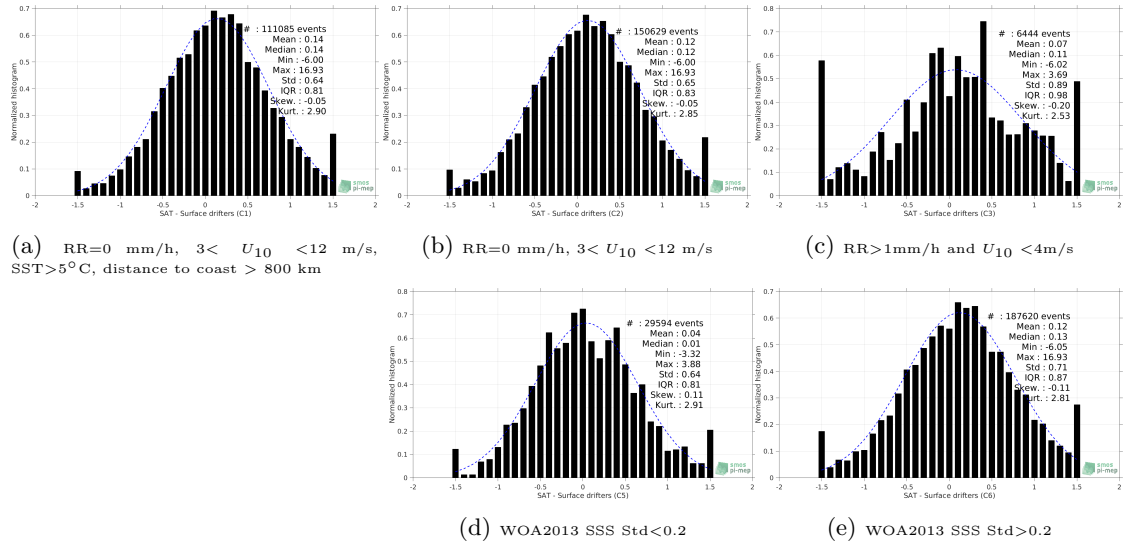


Figure 12: Normalized histogram of Δ SSS (SMOS SSS L2Q v321 - 0.25 Deg (CATDS-CPDC) - Surface drifters) for 5 different subdatasets corresponding to: RR=0 mm/h, $3 < U_{10} < 12$ m/s, SST > 5°C, distance to coast > 800 km (a), RR=0 mm/h, $3 < U_{10} < 12$ m/s (b), RR > 1mm/h and $U_{10} < 4$ m/s (c), WOA2013 SSS Std < 0.2 (d), WOA2013 SSS Std > 0.2 (e).

4 Summary

► Table 1 shows the mean, median, standard deviation (Std), root mean square (RMS), interquartile range (IQR), correlation coefficient (r^2) and robust standard deviation (Std*) of the match-up differences Δ SSS (Satellite - *in situ*) between SMOS SSS L2Q v321 - 0.25 Deg (CATDS-CPDC) and Surface drifters derived over the Tropical Pacific Ocean Pi-MEP region and for the full satellite product period and for the following conditions:

- all: All the match-up pairs satellite/*in situ* SSS values are used to derive the statistics
- C1: only pairs where RR=0 mm/h, $3 < U_{10} < 12$ m/s, SST > 5°C, distance to coast > 800 km
- C2: only pairs where RR=0 mm/h, $3 < U_{10} < 12$ m/s
- C3: only pairs where RR > 1mm/h and $U_{10} < 4$ m/s
- C5: only pairs where WOA2013 SSS Std < 0.2
- C6: only pairs at WOA2013 SSS Std > 0.2
- C7a: only pairs with a distance to coast < 150 km.
- C7b: only pairs with a distance to coast in the range [150, 800] km.
- C7c: only pairs with a distance to coast > 800 km.
- C8a: only pairs where SST is < 5°C.
- C8b: only pairs where SST is in the range [5, 15]°C.

- C8c: only pairs where SST is $> 15^{\circ}\text{C}$.
- C9a: only pairs where SSS is < 33 .
- C9b: only pairs where SSS is in the range [33, 37].
- C9c: only pairs where SSS is > 37 .

Table 1: Statistics of ΔSSS (Satellite - Surface drifters)

Condition	#	Median	Mean	Std	RMS	IQR	r^2	Std*
all	217308	0.12	0.11	0.70	0.71	0.86	0.692	0.64
C1	111085	0.14	0.14	0.64	0.66	0.81	0.720	0.60
C2	150629	0.12	0.12	0.65	0.66	0.83	0.714	0.62
C3	6444	0.11	0.07	0.89	0.89	0.98	0.430	0.73
C5	29594	0.01	0.04	0.64	0.64	0.81	0.773	0.61
C6	187620	0.13	0.12	0.71	0.72	0.87	0.564	0.65
C7a	3149	-0.07	-0.11	0.83	0.84	1.13	0.629	0.84
C7b	52021	0.06	0.06	0.70	0.71	0.93	0.688	0.69
C7c	162126	0.14	0.13	0.70	0.71	0.84	0.694	0.63
C8a	0	NaN	NaN	NaN	NaN	NaN	NaN	NaN
C8b	0	NaN	NaN	NaN	NaN	NaN	NaN	NaN
C8c	217280	0.12	0.11	0.70	0.71	0.86	0.692	0.64
C9a	34820	0.22	0.21	0.80	0.83	0.93	0.112	0.70
C9b	182486	0.10	0.09	0.68	0.68	0.85	0.662	0.64
C9c	2	-0.28	-0.28	0.04	0.28	0.03	NaN	0.04

► Table 2 presents statistics of ΔSSS (Satellite - ISAS) using only ISAS SSS values with $\text{PCTVAR} < 80\%$.

Table 2: Statistics of ΔSSS (Satellite - ISAS)

Condition	#	Median	Mean	Std	RMS	IQR	r^2	Std*
all	213995	0.05	0.05	0.71	0.71	0.88	0.672	0.66
C1	110455	0.08	0.09	0.65	0.66	0.83	0.706	0.62
C2	148571	0.07	0.08	0.65	0.65	0.84	0.702	0.62
C3	6340	0.02	-0.08	0.92	0.93	1.09	0.332	0.77
C5	28700	-0.03	0.00	0.63	0.63	0.84	0.779	0.61
C6	185247	0.07	0.05	0.72	0.72	0.89	0.535	0.67
C7a	2527	-0.09	-0.11	0.83	0.84	1.07	0.556	0.82
C7b	50233	0.03	0.03	0.70	0.71	0.91	0.667	0.68
C7c	161223	0.06	0.05	0.71	0.71	0.87	0.673	0.65
C8a	0	NaN	NaN	NaN	NaN	NaN	NaN	NaN
C8b	0	NaN	NaN	NaN	NaN	NaN	NaN	NaN
C8c	213967	0.05	0.05	0.71	0.71	0.88	0.672	0.66
C9a	33588	-0.02	-0.06	0.81	0.81	0.92	0.083	0.70
C9b	180405	0.07	0.07	0.69	0.69	0.87	0.645	0.65
C9c	2	0.31	0.31	0.00	0.31	0.00	NaN	0.00

► Numerical values can be downloaded as csv files for [Table 1](#) and [Table 2](#).

5 More Comparison/Validation Materials

5.1 Comparisons with other satellite products

► Table 1 shows the mean, median, standard deviation (Std), root mean square (RMS), interquartile range (IQR), correlation coefficient (r^2) and robust standard deviation (Std*) of the match-up differences Δ SSS (Satellite - Surface drifters) between different satellite products and **Surface drifters** derived over the Tropical Pacific Ocean Pi-MEP region considering all match-up pairs satellite/*in situ* SSS values to derive the statistics:

Table 1: Statistics of Δ SSS (Satellite - Surface drifters) - All

Satellite products	#	Median	Mean	Std	RMS	IQR	r^2	Std*
smos-l2-v700	264624	0.07	0.05	0.70	0.70	0.87	0.691	0.65
smap-l2-rss-v4	420811	0.05	0.05	0.41	0.41	0.48	0.858	0.36
smap-l2-jpl-v5.0	437799	0.11	0.10	0.59	0.60	0.68	0.732	0.51
aquarius-l2-or-v5	12146	0.00	0.00	0.32	0.32	0.31	0.524	0.23
aquarius-l2-jpl-v5	12015	0.04	0.04	0.39	0.39	0.44	0.440	0.33
smos-l3-catds-cpdc-v321-l2q	217308	0.12	0.11	0.70	0.71	0.86	0.692	0.64
smos-l3-catds-cpdc-v317-10d-25km	560027	0.08	0.09	0.35	0.36	0.40	0.902	0.30
smos-l3-catds-cpdc-v317-1m-25km	561743	0.08	0.09	0.31	0.32	0.34	0.925	0.25
smos-l3-catds-locean-v5-9d	753493	0.07	0.08	0.33	0.34	0.35	0.914	0.26
smos-l3-catds-locean-v5-18d	753493	0.08	0.10	0.30	0.32	0.30	0.930	0.23
smos-l3-bec-v2-9d	532793	0.28	0.29	0.39	0.48	0.45	0.895	0.33
smos-l3-icdc-v3-1m	191692	0.04	0.08	0.40	0.41	0.42	0.921	0.30
smap-l3-rss-v4-8dr	624911	0.00	0.01	0.29	0.29	0.28	0.929	0.21
smap-l3-rss-v4-1m	624911	0.00	0.03	0.30	0.30	0.28	0.925	0.21
smap-l3-jpl-v5.0-8dr	625710	0.09	0.11	0.31	0.33	0.31	0.917	0.23
smap-l3-jpl-v5.0-1m	625886	0.09	0.11	0.32	0.34	0.30	0.917	0.23
aquarius-l3-or-v5-7dr	40303	-0.05	-0.04	0.25	0.25	0.23	0.720	0.17
aquarius-l3-or-v5-1m	42248	-0.07	-0.04	0.22	0.22	0.16	0.842	0.12
aquarius-l3-or-v5-7dr-rain-mask	39128	-0.03	0.00	0.21	0.21	0.24	0.727	0.17
aquarius-l3-or-v5-1m-rain-mask	42227	-0.02	0.02	0.21	0.21	0.18	0.845	0.14
aquarius-l3-jpl-v5-7dr	39912	0.00	0.03	0.22	0.22	0.25	0.684	0.17
aquarius-l3-jpl-v5-1m	41408	0.01	0.04	0.18	0.19	0.20	0.810	0.15
cci-l4-esa-merged-oi-v3.2-7dr	559602	0.04	0.06	0.26	0.27	0.27	0.946	0.20
cci-l4-esa-merged-oi-v3.2-30dr	562868	0.05	0.08	0.31	0.32	0.28	0.927	0.21
smap-l4-iprc-oi-v1-7d	513770	0.09	0.12	0.27	0.29	0.29	0.943	0.21
smap-l4-iprc-oi-v1-1m	513730	0.10	0.13	0.28	0.31	0.30	0.939	0.22
aquarius-l4-iprc-v5-1w	40843	-0.05	-0.03	0.18	0.18	0.15	0.867	0.11
aquarius-l4-iprc-v5-1m	40520	-0.06	-0.03	0.17	0.17	0.12	0.880	0.09

► Table 2 is similar to Table 1 but considering only match-up pairs where $RR=0$ mm/h, $3 < U_{10} < 12$ m/s, $SST > 5^\circ\text{C}$, distance to coast > 800 km.

Table 2: Statistics of Δ SSS (Satellite - Surface drifters) - C1

Satellite products	#	Median	Mean	Std	RMS	IQR	r^2	Std*
smos-l2-v700	130791	0.12	0.11	0.60	0.61	0.78	0.746	0.59
smap-l2-rss-v4	250955	0.04	0.05	0.36	0.36	0.45	0.892	0.34
smap-l2-jpl-v5.0	239860	0.10	0.10	0.50	0.51	0.64	0.795	0.47
aquarius-l2-or-v5	86	0.15	0.10	0.18	0.21	0.18	0.875	0.10
aquarius-l2-jpl-v5	86	0.30	0.37	0.31	0.48	0.35	0.671	0.31
smos-l3-catds-cpdc-v321-l2q	111085	0.14	0.14	0.64	0.66	0.81	0.720	0.60
smos-l3-catds-cpdc-v317-10d-25km	258027	0.08	0.09	0.30	0.32	0.37	0.923	0.27
smos-l3-catds-cpdc-v317-1m-25km	258400	0.07	0.09	0.26	0.27	0.31	0.945	0.23
smos-l3-catds-locean-v5-9d	344564	0.07	0.07	0.26	0.27	0.31	0.942	0.23
smos-l3-catds-locean-v5-18d	344564	0.08	0.10	0.24	0.25	0.27	0.954	0.20
smos-l3-bec-v2-9d	261479	0.28	0.29	0.32	0.43	0.39	0.927	0.29
smos-l3-icdc-v3-1m	64652	0.03	0.08	0.33	0.34	0.39	0.966	0.28
smap-l3-rss-v4-8dr	340048	0.00	0.01	0.23	0.23	0.24	0.955	0.18
smap-l3-rss-v4-1m	340048	-0.01	0.00	0.23	0.23	0.25	0.955	0.19
smap-l3-jpl-v5.0-8dr	340428	0.07	0.07	0.25	0.26	0.28	0.948	0.21
smap-l3-jpl-v5.0-1m	340520	0.05	0.06	0.24	0.25	0.27	0.952	0.20
aquarius-l3-or-v5-7dr	344	0.08	0.04	0.11	0.11	0.14	0.959	0.09
aquarius-l3-or-v5-1m	750	0.04	0.04	0.08	0.09	0.09	0.976	0.07
aquarius-l3-or-v5-7dr-rain-mask	344	0.08	0.04	0.11	0.11	0.14	0.959	0.09
aquarius-l3-or-v5-1m-rain-mask	750	0.06	0.05	0.09	0.10	0.09	0.975	0.07
aquarius-l3-jpl-v5-7dr	328	0.19	0.18	0.12	0.22	0.19	0.938	0.15
aquarius-l3-jpl-v5-1m	316	0.13	0.14	0.08	0.16	0.14	0.977	0.11
cci-l4-esa-merged-oi-v3.2-7dr	257899	0.05	0.06	0.21	0.22	0.24	0.963	0.18
cci-l4-esa-merged-oi-v3.2-30dr	256739	0.06	0.07	0.21	0.23	0.25	0.962	0.18
smap-l4-iprc-oi-v1-7d	259709	0.10	0.11	0.21	0.24	0.26	0.963	0.19
smap-l4-iprc-oi-v1-1m	259709	0.09	0.10	0.22	0.25	0.28	0.960	0.20
aquarius-l4-iprc-v5-1w	269	-0.04	-0.05	0.07	0.09	0.09	0.985	0.06
aquarius-l4-iprc-v5-1m	246	-0.06	-0.07	0.06	0.09	0.08	0.990	0.06

- ▶ Numerical values can be downloaded as csv files for [Table 1](#) and [Table 2](#).
- ▶ Figures using numerical values of Table 1 sorted by [MEDIANs](#), [MEANs](#), [IQR](#), [RMS](#), [STD](#), [R2](#) are also provided.
- ▶ Figures using numerical values of Table 2 sorted by [MEDIANs](#), [MEANs](#), [IQR](#), [RMS](#), [STD](#), [R2](#) are also provided.

Caution has to be made in the interpretation of the "ranking" between different satellite products in particular when looking at the dispersion parameters like the standard deviation (STD), or the interquartile range (IQR). Keep in mind that low spatial and/or temporal resolution satellite SSS products tend to have lower dispersions than products at higher resolutions. For example, a level 2 (swath) product of a specific sensor will always have more dispersion than level 3 or 4 products where spatial and temporal averaging tend to reduce the instrumental noise and potential small scale variability. In general, products at $1^\circ \times 1^\circ$ spatial resolution have lower dispersion than products at $0.25^\circ \times 0.25^\circ$. Same result applies for monthly products compared to daily products.

5.2 Statistics derived for the different *in situ* databases

► Table 1 shows the mean, median, standard deviation (Std), root mean square (RMS), interquartile range (IQR), correlation coefficient (r^2) and robust standard deviation (Std*) of the match-up differences Δ SSS (Satellite - *in situ*) between **SMOS SSS L2Q v321 - 0.25 Deg (CATDS-CPDC)** and all the available *in situ* datasets derived over the Tropical Pacific Ocean Pi-MEP region and for the full satellite product period and considering all match-up pairs satellite/*in situ* SSS values to derive the statistics:

Table 1: Statistics of Δ SSS (Satellite - *in situ*)

<i>in situ</i> database	#	Median	Mean	Std	RMS	IQR	r^2	Std*
argo	94420	0.03	0.03	0.67	0.67	0.82	0.562	0.61
tsg-legos-dm	417529	0.00	0.00	0.71	0.71	0.85	0.466	0.63
tsg-gosud-research-vessel	160423	-0.04	-0.03	0.69	0.69	0.84	0.470	0.63
tsg-gosud-sailing-ship	50880	0.13	0.13	0.55	0.57	0.71	0.796	0.53
tsg-samos	834742	0.04	0.04	0.71	0.71	0.85	0.376	0.64
drifter	217308	0.12	0.11	0.70	0.71	0.86	0.692	0.64

► Table 2 is similar to Table 1 but considering only match-up pairs where RR=0 mm/h, $3 < U_{10} < 12$ m/s, SST>5°C, distance to coast > 800 km.

Table 2: Statistics of Δ SSS (Satellite - *in situ*)

<i>in situ</i> database	#	Median	Mean	Std	RMS	IQR	r^2	Std*
argo	44590	0.04	0.05	0.61	0.61	0.77	0.562	0.58
tsg-legos-dm	100608	0.01	0.02	0.61	0.61	0.78	0.473	0.58
tsg-gosud-research-vessel	13898	-0.01	0.01	0.59	0.59	0.83	0.646	0.61
tsg-gosud-sailing-ship	24141	0.19	0.19	0.50	0.53	0.58	0.756	0.43
tsg-samos	241646	0.08	0.08	0.60	0.60	0.76	0.437	0.57
drifter	111085	0.14	0.14	0.64	0.66	0.81	0.720	0.60

► Numerical values can be downloaded as csv files for [Table 1](#) and [Table 2](#).

References

- Abderrahim Bentamy and Denis Croize Fillon. Gridded surface wind fields from Metop/ASCAT measurements. *Int. J. Remote Sens.*, 33(6):1729–1754, March 2012. ISSN 1366-5901. doi: [10.1080/01431161.2011.600348](https://doi.org/10.1080/01431161.2011.600348).
- Abderrahim Bentamy, Semyon A. Grodsky, James A. Carton, Denis Croizé-Fillon, and Bertrand Chapron. Matching ASCAT and QuikSCAT winds. *J. Geophys. Res.*, 117(C2), February 2012. ISSN 0148-0227. doi: [10.1029/2011JC007479](https://doi.org/10.1029/2011JC007479).
- Jaqueline Boutin, Y. Chao, W. E. Asher, T. Delcroix, R. Drucker, K. Drushka, N. Kolodziejczyk, T. Lee, N. Reul, G. Reverdin, J. Schanze, A. Soloviev, L. Yu, J. Anderson, L. Brucker, E. Dinnat, A. S. Garcia, W. L. Jones, C. Maes, T. Meissner, W. Tang, N. Vinogradova, and B. Ward. Satellite and In Situ Salinity: Understanding Near-Surface Stratification and Sub-footprint Variability. *Bull. Am. Meteorol. Soc.*, 97(8):1391–1407, 2016. ISSN 1520-0477. doi: [10.1175/bams-d-15-00032.1](https://doi.org/10.1175/bams-d-15-00032.1).

- Clément de Boyer Montégut, Gurvan Madec, A. S. Fischer, A. Lazar, and D. Ludicone. Mixed layer depth over the global ocean: An examination of profile data and a profile-based climatology. *J. Geophys. Res.*, 109(C12), December 2004. doi: [10.1029/2004jc002378](https://doi.org/10.1029/2004jc002378).
- Clément de Boyer Montégut, Juliette Mignot, Alban Lazar, and Sophie Cravatte. Control of salinity on the mixed layer depth in the world ocean: 1. General description. *J. Geophys. Res.*, 112(C6), June 2007. ISSN 0148-0227. doi: [10.1029/2006jc003953](https://doi.org/10.1029/2006jc003953).
- Ralph R. Ferraro. SSM/I derived global rainfall estimates for climatological applications. *J. Geophys. Res.*, 102(D14):16715–16736, 07 1997. doi: [10.1029/97JD01210](https://doi.org/10.1029/97JD01210).
- Ralph R. Ferraro, Fuzhong Weng, Norman C. Grody, and Limin Zhao. Precipitation characteristics over land from the NOAA-15 AMSU sensor. *Geophys. Res. Lett.*, 27(17):2669–2672, 2000. doi: [10.1029/2000GL011665](https://doi.org/10.1029/2000GL011665).
- Fabienne Gaillard, Thierry Reynaud, Virginie Thierry, Nicolas Kolodziejczyk, and Karina von Schuckmann. In Situ-Based Reanalysis of the Global Ocean Temperature and Salinity with ISAS: Variability of the Heat Content and Steric Height. *J. Clim.*, 29(4):1305–1323, February 2016. ISSN 1520-0442. doi: [10.1175/jcli-d-15-0028.1](https://doi.org/10.1175/jcli-d-15-0028.1).
- Robert J. Joyce, John E. Janowiak, Phillip A. Arkin, and Pingping Xie. CMORPH: A Method that Produces Global Precipitation Estimates from Passive Microwave and Infrared Data at High Spatial and Temporal Resolution. *J. Hydrometeorol.*, 5(3):487–503, June 2004. doi: [10.1175/1525-7541\(2004\)005<0487:camtpg>2.0.co;2](https://doi.org/10.1175/1525-7541(2004)005<0487:camtpg>2.0.co;2).
- Nicolas Kolodziejczyk, Gilles Reverdin, and Alban Lazar. Interannual Variability of the Mixed Layer Winter Convection and Spice Injection in the Eastern Subtropical North Atlantic. *J. Phys. Oceanogr.*, 45(2):504–525, Feb 2015. ISSN 1520-0485. doi: [10.1175/jpo-d-14-0042.1](https://doi.org/10.1175/jpo-d-14-0042.1).
- Christian Kummerow, Y. Hong, W. S. Olson, S. Yang, R. F. Adler, J. McCollum, R. Ferraro, G. Petty, D-B. Shin, and T. T. Wilheit. The Evolution of the Goddard Profiling Algorithm (GPROF) for Rainfall Estimation from Passive Microwave Sensors. *J. Appl. Meteorol.*, 40(11):1801–1820, 2001. doi: [10.1175/1520-0450\(2001\)040<1801:TEOTGP>2.0.CO;2](https://doi.org/10.1175/1520-0450(2001)040<1801:TEOTGP>2.0.CO;2).