



# Match-up database Analyses Report

SMOS SSS L3 v5 - 18 Days  
(CATDS-CECOS-LOCEAN)

Salinity Snake

SPURS 2

*prepared by the Pi-MEP Consortium*

December 15, 2020

# Contents

<b>1</b>	<b>Overview</b>	<b>6</b>
<b>2</b>	<b>The MDB file datasets</b>	<b>7</b>
2.1	Satellite SSS product . . . . .	7
2.1.1	SMOS SSS L3 v5 - 18 Days (CATDS-CECOS-LOCEAN) . . . . .	7
2.2	<i>In situ</i> SSS dataset . . . . .	7
2.3	Auxiliary geophysical datasets . . . . .	8
2.3.1	CMORPH . . . . .	8
2.3.2	ASCAT . . . . .	9
2.3.3	ISAS . . . . .	9
2.3.4	World Ocean Atlas Climatology . . . . .	10
2.4	Overview of the Match-ups generation method . . . . .	10
2.4.1	<i>In situ</i> /Satellite data filtering . . . . .	10
2.4.2	<i>In situ</i> /Satellite Co-localization . . . . .	10
2.4.3	MDB pair Co-localization with auxiliary data and complementary information . . . . .	11
2.4.4	Content of the Match-Up NetCDF files . . . . .	12
2.5	MDB characteristics for the particular <i>in situ</i> /satellite pairs . . . . .	18
2.5.1	Number of paired SSS data as a function of time and distance to coast . . . . .	18
2.5.2	Histograms of the SSS match-ups . . . . .	18
2.5.3	Distribution of <i>in situ</i> SSS depth measurements . . . . .	19
2.5.4	Spatial Distribution of Match-ups . . . . .	20
2.5.5	Histograms of the spatial and temporal lags of the match-ups pairs . . . . .	21
<b>3</b>	<b>MDB file Analyses</b>	<b>21</b>
3.1	Spatial Maps of the Temporal mean and Std of <i>in situ</i> and satellite SSS and of the difference ( $\Delta$ SSS) . . . . .	21
3.2	Time series of the monthly median and Std of <i>in situ</i> and satellite SSS and of the difference ( $\Delta$ SSS) . . . . .	23
3.3	Zonal mean and Std of <i>in situ</i> and satellite SSS and of the difference $\Delta$ SSS . . . . .	23
3.4	Scatterplots of satellite vs <i>in situ</i> SSS by latitudinal bands . . . . .	24
3.5	Time series of the monthly median and Std of the $\Delta$ SSS sorted by latitudinal bands . . . . .	25
3.6	$\Delta$ SSS sorted as function of geophysical parameters . . . . .	26
3.7	$\Delta$ SSS maps and statistics for different geophysical conditions . . . . .	27
<b>4</b>	<b>Summary</b>	<b>29</b>
<b>5</b>	<b>More Comparison/Validation Materials</b>	<b>31</b>
5.1	Comparisons with other satellite products . . . . .	31
5.2	Statistics derived for the different <i>in situ</i> databases . . . . .	32

## List of Figures

1	Number of match-ups between Salinity Snake and SMOS SSS L3 v5 - 18 Days (CATDS-CECOS-LOCEAN) SSS as a function of time (a) and as function of the distance to coast (b) over the SPURS 2 Pi-MEP region and for the full satellite product period. . . . .	18
---	---	----

2	Histograms of SSS from Salinity Snake (a) and SMOS SSS L3 v5 - 18 Days (CATDS-CECOS-LOCEAN) (b) considering all match-up pairs per bins of 0.1 over the SPURS 2 Pi-MEP region and for the full satellite product period. . . . .	18
3	Histograms of the depth of the upper level SSS measurements from Salinity Snake in the Match-up DataBase for the SPURS 2 Pi-MEP region (a) and temporal mean spatial distribution of pressure of the <i>in situ</i> SSS data over 1°x1° boxes and for the full satellite product period (b). . . . .	19
4	Number of SSS match-ups between Salinity Snake SSS and the SMOS SSS L3 v5 - 18 Days (CATDS-CECOS-LOCEAN) SSS product for the SPURS 2 Pi-MEP region over 1°x1° boxes and for the full satellite product period. . . . .	20
5	Histograms of the spatial (a) and temporal (b) lags between the time of the Salinity Snake measurements and the date of the corresponding SMOS SSS L3 v5 - 18 Days (CATDS-CECOS-LOCEAN) SSS product. . . . .	21
6	Temporal mean (left) and Std (right) of SSS from SMOS SSS L3 v5 - 18 Days (CATDS-CECOS-LOCEAN) (top), Salinity Snake (middle), and of $\Delta$ SSS (Satellite - Salinity Snake). Only match-up pairs are used to generate these maps. . . . .	22
7	Time series of the monthly median SSS (top), median of $\Delta$ SSS (Satellite - Salinity Snake) and Std of $\Delta$ SSS (Satellite - Salinity Snake) over the SPURS 2 Pi-MEP region considering all match-ups collected by the Pi-MEP. . . . .	23
8	Left panel: Zonal mean SSS from SMOS SSS L3 v5 - 18 Days (CATDS-CECOS-LOCEAN) satellite product (black) and from Salinity Snake (blue). Right panel: Zonal mean of $\Delta$ SSS (Satellite - Salinity Snake) for all the collected Pi-MEP match-up pairs estimated over the full satellite product period. . . . .	24
9	Contour maps of the concentration of SMOS SSS L3 v5 - 18 Days (CATDS-CECOS-LOCEAN) SSS (y-axis) versus Salinity Snake SSS (x-axis) at match-up pairs for different latitude bands. For each plot, the red line shows x=y. The black thin and dashed lines indicate a linear fit through the data cloud and the $\pm 95\%$ confidence levels, respectively. The number match-up pairs $n$ , the slope and $R^2$ coefficient of the linear fit, the root mean square (RMS) and the mean bias between satellite and <i>in situ</i> data are indicated for each latitude band in each plots. . . . .	25
10	Monthly median (red curves) of $\Delta$ SSS (Satellite - Salinity Snake) and $\pm 1$ Std (black vertical thick bars) as function of time for all the collected Pi-MEP match-up pairs estimated over the SPURS 2 Pi-MEP region and for the full satellite product period are shown for different latitude bands: (a) 80°S-80°N, (b) 20°S-20°N, (c) 40°S-20°S and 20°N-40°N and (d) 60°S-40°S and 40°N-60°N. . . . .	26
11	$\Delta$ SSS (Satellite - Salinity Snake) sorted as function of Salinity Snake SSS values a), Salinity Snake SST b), ASCAT Wind speed c), CMORPH rain rate d), distance to coast (e) and <i>in situ</i> measurement depth (f). In all plots the median and Std of $\Delta$ SSS for each bin is indicated by the red curves and black vertical thick bars ( $\pm 1$ Std) . . . . .	27
12	Temporal mean gridded over spatial boxes of size 1°x1° of $\Delta$ SSS (SMOS SSS L3 v5 - 18 Days (CATDS-CECOS-LOCEAN) - Salinity Snake) for 5 different subdatasets corresponding to: RR=0 mm/h, $3 < U_{10} < 12$ m/s, SST>5°C, distance to coast > 800 km (a), RR=0 mm/h, $3 < U_{10} < 12$ m/s (b), RR>1mm/h and $U_{10} < 4$ m/s (c), WOA2013 SSS Std<0.2 (d), WOA2013 SSS Std>0.2 (e). . . . .	28

---

13	Normalized histogram of $\Delta$ SSS (SMOS SSS L3 v5 - 18 Days (CATDS-CECOS-LOCEAN) - Salinity Snake) for 5 different subdatasets corresponding to: RR=0 mm/h, $3 < U_{10} < 12$ m/s, SST $>5^{\circ}$ C, distance to coast $> 800$ km (a), RR=0 mm/h, $3 < U_{10} < 12$ m/s (b), RR $>1$ mm/h and $U_{10} < 4$ m/s (c), WOA2013 SSS Std $<0.2$ (d), WOA2013 SSS Std $>0.2$ (e). . . . .	29
----	--	----

## Acronym

<b>Aquarius</b>	NASA/CONAE Salinity mission
ASCAT	Advanced Scatterometer
ATBD	Algorithm Theoretical Baseline Document
BLT	Barrier Layer Thickness
<b>CMORPH</b>	CPC MORPHing technique (precipitation analyses)
<b>CPC</b>	Climate Prediction Center
CTD	Instrument used to measure the conductivity, temperature, and pressure of seawater
DM	Delayed Mode
EO	Earth Observation
<b>ESA</b>	European Space Agency
FTP	File Transfer Protocol
<b>GOSUD</b>	Global Ocean Surface Underway Data
<b>GTMBA</b>	The Global Tropical Moored Buoy Array
<b>Ifremer</b>	Institut français de recherche pour l'exploitation de la mer
<b>IPEV</b>	Institut polaire français Paul-Émile Victor
IQR	Interquartile range
ISAS	<i>In Situ</i> Analysis System
Kurt	Kurtosis (fourth central moment divided by fourth power of the standard deviation)
L2	Level 2
<b>LEGOS</b>	Laboratoire d'Etudes en Géophysique et Océanographie Spatiales
<b>LOCEAN</b>	Laboratoire d'Océanographie et du Climat : Expérimentations et Approches Numériques
<b>LOPS</b>	Laboratoire d'Océanographie Physique et Spatiale
MDB	Match-up Data Base
<b>MEOP</b>	Marine Mammals Exploring the Oceans Pole to Pole
MLD	Mixed Layer Depth
<b>NCEI</b>	National Centers for Environmental Information
NRT	Near Real Time
<b>NTAS</b>	Northwest Tropical Atlantic Station
OI	Optimal interpolation
<b>Pi-MEP</b>	Pilot-Mission Exploitation Platform
<b>PIRATA</b>	Prediction and Researched Moored Array in the Atlantic
QC	Quality control
$R_{sat}$	Spatial resolution of the satellite SSS product
<b>RAMA</b>	Research Moored Array for African-Asian-Australian Monsoon Analysis and Prediction
$r^2$	Square of the Pearson correlation coefficient
RMS	Root mean square
RR	Rain rate
<b>SAMOS</b>	Shipboard Automated Meteorological and Oceanographic System
Skew	Skewness (third central moment divided by the cube of the standard deviation)
<b>SMAP</b>	Soil Moisture Active Passive (NASA mission)
<b>SMOS</b>	Soil Moisture and Ocean Salinity (ESA mission)
<b>SPURS</b>	Salinity Processes in the Upper Ocean Regional Study
SSS	Sea Surface Salinity
$SSS_{in situ}$	<i>In situ</i> SSS data considered for the match-up

$SSS_{SAT}$	Satellite SSS product considered for the match-up
$\Delta SSS$	Difference between satellite and <i>in situ</i> SSS at colocalized point ( $\Delta SSS = SSS_{SAT} - SSS_{in\,situ}$ )
SST	Sea Surface Temperature
Std	Standard deviation
Std*	Robust Standard deviation = $\text{median}(\text{abs}(x - \text{median}(x))) / 0.67$ (less affected by outliers than Std)
Stratus	Surface buoy located in the eastern tropical Pacific
Survostral	SURVeillance de l'Océan AuSTRAL (Monitoring the Southern Ocean)
TAO	Tropical Atmosphere Ocean
TSG	ThermoSalinoGraph
WHOI	Woods Hole Oceanographic Institution
WHOTS	WHOI Hawaii Ocean Time-series Station
WOA	World Ocean Atlas

# 1 Overview

In this report, we present systematic analyses of the Match-up DataBase (MDB) files generated by the Pi-MEP platform within the following Pi-MEP region and for the below pair of Satellite/*in situ* SSS data:

- Pi-MEP region: SPURS 2 (download the corresponding mask in NetCDF [here](#))
- SSS satellite product ( $SSS_{SAT}$ ): SMOS SSS L3 v5 - 18 Days (CATDS-CECOS-LOCEAN)
- *In situ* dataset ( $SSS_{In situ}$ ): Salinity Snake (download the corresponding *in situ* report [here](#))

In the following,  $\Delta SSS = SSS_{SAT} - SSS_{In situ}$  denotes the difference between the satellite and *in situ* SSS at the colocalized points that form the MDB.

This report presents successively:

The MDB file DataSets (Section 2)

- A short description of the satellite SSS product considered in the match-up (2.1)
- A short description of the *in situ* SSS dataset considered in the match-up (2.2)
- A short description of the auxiliary geophysical datasets co-localized with SSS pairs (2.3)
- An overview of how the Match-ups were evaluated (2.4)
- An overview of the MDB characteristics for the particular *in situ*/satellite pairs (2.5)

The major results of the MDB file Analyses (Section 3)

- Spatial Maps of the Time-mean and temporal Std of *in situ* and satellite SSS and of the  $\Delta SSS$  (3.1)
- Time series of the monthly median and Std of *in situ* and satellite SSS and of the  $\Delta SSS$  (3.2)
- Zonal mean and Std of *in situ* and satellite SSS and of the  $\Delta SSS$  (3.3)
- Scatterplots of satellite vs *in situ* SSS by latitudinal bands (3.4)
- Time series of the monthly median and Std of the  $\Delta SSS$  sorted by latitudinal bands (3.5)
- $\Delta SSS$  sorted as function of geophysical parameters (3.6)
- $\Delta SSS$  maps and statistics for different geophysical conditions (3.7)

All analyses are conducted over the Pi-MEP Region specified above and over the full satellite SSS product period. Original figures appearing in this report can be downloaded as PNG files [here](#) or by clicking directly on the figure.

## 2 The MDB file datasets

### 2.1 Satellite SSS product

#### 2.1.1 SMOS SSS L3 v5 - 18 Days (CATDS-CECOS-LOCEAN)

In order to propose improved methodologies to be implemented in the near real time CATDS processing chain (CATDS-CPDC), LOCEAN/IPSL (UMR CNRS/UPMC/IRD/MNHN) and ACRI-st have derived a methodology for correcting systematic SSS biases. The v5 release uses the same improved 'debiasing' technique (Boutin et al. (2018)) as v4 but the adjustment of the long term mean biases has been slightly updated leading to local improvements in very variable areas as well as in noisy areas (in particular high latitudes and RFI contaminated areas).

Maps are provided every 4 days from 01/2010 to 11/2020 and are derived from a combination of ascending and descending orbits. Debaised SSS are temporally averaged using a slipping Gaussian kernel with a full width at half maximum of 18 days (18 day product). Maps are at a spatial resolution 25x25km<sup>2</sup> and a median filtering over nearest neighbors is applied.

The **L3 DEBIAS LOCEAN v5** Sea Surface Salinity product (Boutin et al. (2019)) have been produced by LOCEAN/IPSL (UMR CNRS/UPMC/IRD/MNHN) laboratory and ACRI-st company and is distributed by the Ocean Salinity Expertise Center (CEC-OS) of the CNES-IFREMER Centre Aval de Traitement des Donnees SMOS (CATDS), at IFREMER, Plouzane (France).

Table 1: Satellite SSS product characteristics

SMOS SSS L3 v5 - 18 Days (CATDS-CECOS-LOCEAN)	
Spatial resolution	25 km
Temporal resolution	18 days (file every 4 days)
Temporal coverage	From 2010-01-16 to 2020-11-19
Data Provider	CATDS
Release Date	2020-12
Version	5
Data access	debaisedSSS_18days_v5
DOI	<a href="https://doi.org/10.17882/52804">https://doi.org/10.17882/52804</a>
Documentation	Doc.L3_DEBIAS_LOCEAN_v5.pdf

### 2.2 *In situ* SSS dataset

The Salinity Snake (SS) measures sea surface salinity in the top 1 - 2 cm of the water column, which is the radiometric depth of L-Band satellite radiometers such as on Aquarius/SAC-D, SMAP and SMOS satellites that measure salinity remotely. The SS consists of four key components: a 10m boom mast, a hose, which is deployed from this boom, a powerful self-priming peristaltic pump which transports a constant stream of a seawater/air emulsion, and a shipboard apparatus, which filters, de-bubbles, sterilizes and analyses the salinity of the water. The SS (<https://doi.org/10.5067/SPUR2-SNAKE>) was deployed during both SPURS-2 Revelle cruises in August 2016 and October 2017. Focused around a central mooring located near 10°N,125°W, the objective of SPURS-2 (NASA-funded oceanographic process study) was to study the dynamics of the rainfall-dominated surface ocean at the western edge of the eastern Pacific fresh pool subject to high seasonal variability and strong zonal flows associated with the North Equatorial Current and Countercurrent.



## 2.3 Auxiliary geophysical datasets

Additional EO datasets are used to characterize the geophysical conditions at the *in situ*/satellite SSS pair measurement locations and time, and 10 days prior the measurements to get an estimate of the geophysical condition and history. As discussed in [Boutin et al. \(2016\)](#), the presence of vertical gradients in, and horizontal variability of, sea surface salinity indeed complicates comparison of satellite and *in situ* measurements. The additional EO data are used here to get a first estimates of conditions for which L-band satellite SSS measured in the first centimeters of the upper ocean within a 50-150 km diameter footprint might differ from pointwise *in situ* measurements performed in general between 10 and 5 m depth below the surface. The spatio-temporal variability of SSS within a satellite footprint (50–150 km) is a major issue for satellite SSS validation in the vicinity of river plumes, frontal zones, and significant precipitation. Rainfall can in some cases produce vertical salinity gradients exceeding  $1 \text{ pss m}^{-1}$ ; consequently, it is recommended that satellite and *in situ* SSS measurements less than 3–6 h after rain events should be considered with care when used in satellite calibration/validation analyses. To identify such situation, the Pi-MEP platform is first using [CMORPH](#) products to characterize the local value and history of rain rate and [ASCAT](#) gridded data are used to characterize the local surface wind speed and history. For validation purpose, the [ISAS](#) monthly SSS *in situ* analysed fields at 5 m depth are collocated and compared with the satellite SSS products. The use of ISAS is motivated by the fact that it is used in the SMOS L2 official validation protocol in which systematic comparisons of SMOS L2 retrieved SSS with ISAS are done. In complement to ISAS, monthly std climatological fields from the World Ocean Atlas ([WOA13](#)) at the match-up pairs location and date are also used to have an a priori information of the local SSS variability.

### 2.3.1 CMORPH

Precipitation are estimated using the [CMORPH](#) 3-hourly products at  $1/4^\circ$  resolution ([Joyce et al. \(2004\)](#)). CMORPH (CPC MORPHing technique) produces global precipitation analyses at very high spatial and temporal resolution. This technique uses precipitation estimates that have been derived from low orbiter satellite microwave observations exclusively, and whose features are transported via spatial propagation information that is obtained entirely from geostationary satellite IR data. At present NOAA incorporate precipitation estimates derived from the passive microwaves aboard the DMSP 13, 14 and 15 (SSM/I), the NOAA-15, 16, 17 and 18 (AMSU-B), and AMSR-E and TMI aboard NASA's Aqua, TRMM and GPM spacecraft, respectively. These estimates are generated by algorithms of [Ferraro \(1997\)](#) for SSM/I, [Ferraro et al. \(2000\)](#) for AMSU-B and [Kummerow et al. \(2001\)](#) for TMI. Note that this technique is not a precipitation estimation algorithm but a means by which estimates from existing microwave rainfall algorithms can be combined. Therefore, this method is extremely flexible such that any precipitation estimates from any microwave satellite source can be incorporated.

With regard to spatial resolution, although the precipitation estimates are available on a grid with a spacing of 8 km (at the equator), the resolution of the individual satellite-derived estimates is coarser than that - more on the order of  $12 \times 15 \text{ km}$  or so. The finer "resolution" is obtained via interpolation.

In effect, IR data are used as a means to transport the microwave-derived precipitation features during periods when microwave data are not available at a location. Propagation vector matrices are produced by computing spatial lag correlations on successive images of geostationary satellite IR which are then used to propagate the microwave derived precipitation estimates. This process governs the movement of the precipitation features only. At a given location, the shape and intensity of the precipitation features in the intervening half hour periods between microwave scans are determined by performing a time-weighting interpolation between microwave-derived

features that have been propagated forward in time from the previous microwave observation and those that have been propagated backward in time from the following microwave scan. NOAA refer to this latter step as "morphing" of the features.

For the present Pi-MEP products, we only considered the 3-hourly products at 1/4 degree resolution. The entire CMORPH record (December 2002-present) for 3-hourly, 1/4 degree lat/lon resolution can be found at: [ftp://ftp.cpc.ncep.noaa.gov/precip/CMORPH\\_V1.0/CRT/](ftp://ftp.cpc.ncep.noaa.gov/precip/CMORPH_V1.0/CRT/). CMORPH estimates cover a global belt (-180°W to 180°E) extending from 60°S to 60°N latitude and are available for the complete period of the Pi-MEP core datasets (Jan 2010-now).

### 2.3.2 ASCAT

Advanced SCATterometer (ASCAT) daily data produced and made available at [Ifremer/CERSAT](http://ifremer.cersat.fr) on a 0.25°x0.25° resolution grid ([Bentamy and Fillon \(2012\)](#)) since March 2007 are used to characterize the mean daily wind at the match-up pair location as well as the wind history during the 10-days period preceding the in situ measurement date. These wind fields are calculated based on a geostatistical method with external drift. Remotely sensed data from ASCAT are considered as observations while those from numerical model analysis (ECMWF) are associated with the external drift. The spatial and temporal structure functions for wind speed, zonal and meridional wind components are estimated from ASCAT retrievals. Furthermore, the new procedure includes a temporal interpolation of the retrievals based on the complex empirical orthogonal function (CEOF) approach, in order to enhance the sampling length of the scatterometer observations. The resulting daily wind fields involves the main known surface wind patterns as well as some variation modes associated with temporal and spatial moving features. The accuracy of the gridded winds was investigated through comparisons with moored buoy data in [Bentamy et al. \(2012\)](#) and resulted in rms differences for wind speed and direction are about 1.50 m.s<sup>-1</sup> and 20°.

### 2.3.3 ISAS

The In Situ Analysis System (ISAS), as described in [Gaillard et al. \(2016\)](#) is a data based re-analysis of temperature and salinity fields over the global ocean. It was initially designed to synthesize the temperature and salinity profiles collected by the Argo program. It has been later extended to accommodate all type of vertical profile as well as time series. ISAS gridded fields are entirely based on *in situ* measurements. The methodology and configuration have been conceived to preserve as much as possible the data information content and resolution. ISAS is developed and run in a research laboratory (LOPS) in close collaboration with Coriolis, one of Argo Global Data Assembly Center and unique data provider for the Mercator operational oceanography system. At the moment the period covered starts in 2002 and only the upper 2000 m are considered. The gridded fields were produced over the global ocean 70°N–70°S on a 1/2° grid by the ISAS project with datasets downloaded from the Coriolis data center (for more details on ISAS see [Gaillard et al. \(2009\)](#)). In the Pi-MEP, the product in used is the [INSITU\\_GLO\\_TS\\_OA\\_NRT\\_OBSERVATIONS.013.002.a](#) v6.2 NRT derived at the Coriolis data center and provided by the Copernicus Marine Environment Monitoring Service (CMEMS). The major contribution to the data set is from Argo array of profiling floats, reaching an approximate resolution of one profile every 10-days and every 3-degrees over the satellite SSS period (<http://www.umr-lops.fr/SNO-Argo/Products/ISAS-T-S-fields/>); in this version SSS from ship of opportunity thermosalinographs are not used, so that we can consider SMOS SSS validation using these measurements independent of ISAS. The ISAS optimal interpolation involves a structure function modeled as the sum of two Gaussian functions, each associated with specific time and space scales, resulting in a smoothing over typically 3 degrees. The smallest scale which can

be retrieved with ISAS analysis is not smaller than 300–500 km (Kolodziejczyk et al. (2015)). For validation purpose, the ISAS monthly SSS fields at 5 m depth are collocated and compared with the satellite SSS products and included in the Pi-MEP Match-up files. In addition, the "percentage of variance" fields (PCTVAR) contained in the ISAS analyses provide information on the local variability of *in situ* SSS measurements within  $1/2^\circ \times 1/2^\circ$  boxes.

### 2.3.4 World Ocean Atlas Climatology

The World Ocean Atlas 2013 version 2 (WOA13 V2) is a set of objectively analyzed ( $1^\circ$  grid) climatological fields of *in situ* temperature, salinity and other variables provided at standard depth levels for annual, seasonal, and monthly compositing periods for the World Ocean. It also includes associated statistical fields of observed oceanographic profile data interpolated to standard depth levels on  $5^\circ$ ,  $1^\circ$ , and  $0.25^\circ$  grids. We use these fields in complement to ISAS to characterize the climatological fields (annual mean and std) at the match-up pairs location and date.

## 2.4 Overview of the Match-ups generation method

The match-up production is basically a three steps process:

1. preparation of the input *in situ* and satellite data, and,
2. co-localization of satellite products with *in situ* SSS measurements.
3. co-localization of the *in situ*/satellite pair with auxiliary information.

In the following, we successively detail the approaches taken for these different steps.

### 2.4.1 *In situ*/Satellite data filtering

The first step consists in filtering Salinity Snake *in situ* data using the quality flags as described in 2.2 so that only valid salinity data remain in the final match-up files.

For high-spatial resolution *in situ* SSS measurements such as the Thermo-SalinoGraph (TSG) SSS data, as well as SSS data from surface drifters, an additional spatial filtering step is performed on the *in situ* data that will be in fine compared to the satellite SSS products. If  $R_{sat}$  is the spatial resolution of the satellite SSS product (L2 to L3-L4), the *in situ* data are spatially low pass filtered using a running median filter with a window width= $R_{sat}$  to try to minimize the spatial representativeness uncertainty when comparing to the lower spatial resolution of the satellite SSS product. Both original and filtered *in situ* data are finally stored in the MDB files.

Only for satellite L2 SSS data, a third step consist in filtering spurious data using the flags and associated recommendation as provided by the official data centers and described in 2.1.

### 2.4.2 *In situ*/Satellite Co-localization

In this step, each SSS satellite acquisition is co-localized with the filtered *in situ* measurements. The method used for co-localization differ if the satellite SSS is a swath product (so-called Level 2-types) or a time-space composite product (so-called Level 3/level 4-types).

- For L2 SSS swath data :

If  $R_{sat}$  is the spatial resolution of the satellite swath SSS product, for each *in situ* data sample collected in the Pi-MEP database, the platform searches for all satellite SSS data found at grid nodes located within a radius of  $R_{sat}/2$  from the *in situ* data location and

acquired with a time-lag from the *in situ* measurement date that is less or equal than  $\pm 12$  hours. If several satellite SSS samples are found to meet these criteria, the final satellite SSS match-up point is selected to be the closest in time from the *in situ* data measurement date. The final spatial and temporal lags between the *in situ* and satellite data are stored in the MDB files.

- For L3 and L4 composite SSS products :

If  $R_{sat}$  is the spatial resolution of the composite satellite SSS product and D the period over which the composite product was built (e.g., periods of 1, 7, 8, 9, 10, 18 days, 1 month, etc..) with central time  $t_o$ , for each *in situ* data sample collected in the Pi-MEP database during period D, the platform searches for all satellite SSS data of the composite product found at grid nodes located within a radius of  $R_{sat}/2$  from the *in situ* data location. If several satellite SSS product samples are found to meet these criteria, the final satellite SSS match-up point is chosen to be the composite SSS with central time  $t_o$  which is the closest in time from the *in situ* data measurement date. The final spatial and temporal lags between the *in situ* and satellite data are stored in the MDB files.

### 2.4.3 MDB pair Co-localization with auxiliary data and complementary information

MDB data consist of satellite and *in situ* SSS pairs but also of auxiliary geophysical parameters such as local and history of wind speed and rain rates, as well as various information (climatology, distance to coast, mixed layer depth, barrier layer thickness, etc) that can be derived from *in situ* data and which are included in the final match-up files. The collocation of auxiliary parameters and additional information is done for each *in situ* SSS measurement contained in the match-up files as follows :

If  $t_{insitu}$  is the time/date at which the *in situ* measurement is performed, we collect:

- The [ASCAT](#) wind speed product of the same day than  $t_{insitu}$  found at the ASCAT  $1/4^\circ$  grid node with closest distance from the *in situ* data location and the time series of the ASCAT wind speed at the same node for the 10 days prior the *in situ* measurement day.
- If the *in situ* data is located within the  $60^\circ\text{N}$ - $60^\circ\text{S}$  band, we select the [CMORPH](#) 3-hourly product the closest in time from  $t_{insitu}$  and found at the CMORPH  $1/4^\circ$  grid node with closest distance from the *in situ* data location. We then store the time series of the CMORPH rain rate at the same node for the 10 days prior the *in situ* measurement time.

For the given month/year of the *in situ* data, we select the [ISAS](#) and [WOA](#) fields for the same month (and same year for ISAS fields) and take the SSS analysis (monthly mean, std) found at the closest grid node from the *in situ* measurement.

The distance from the *in situ* SSS data location to the nearest coast is evaluated and provided in km. We use a distance-to-coast map at  $1/4^\circ$  resolution where small islands have been removed.

When vertical profiles of salinity (S) and temperature (T) are made available from the *in situ* measurements used to build the match-up (Argo or sea mammals), the following variables are included into each satellite/*in situ* match-up file:

1. The vertical distribution of pressure at which the profile were measured,
2. The vertical S(z) and T(z) profiles,
3. The vertical potential density anomaly profile  $\sigma_0(z)$ ,

4. The Mixed Layer Depth (MLD). The MLD is defined here as the depth where the potential density has increased from the reference depth (10 meter) by a threshold equivalent to  $0.2^{\circ}\text{C}$  decrease in temperature at constant salinity:  $\sigma_0 = \sigma_{010m} + \Delta\sigma_0$  with  $\Delta\sigma_0 = \sigma_0(\theta_{10m} - 0.2, S_{10m}) - \sigma_0(\theta_{10m}, S_{10m})$  where  $\theta_{10m}$  and  $S_{10m}$  are the temperature and salinity at the reference depth (i.e. 10 m) (de Boyer Montégut et al. (2004), de Boyer Montégut et al. (2007)).
5. The Top of the Thermocline Depth (TTD) is defined as the depth at which temperature decreases from its 10 m value by  $0.2^{\circ}\text{C}$ .
6. The Barrier Layer if present, is defined as the intermediate layer between the top of the thermocline and the bottom of the density mixed-layer and its thickness (BLT) is defined as the difference between the MLD and the TTD.
7. The vertical profile of the buoyancy frequency  $N^2(z)$

The resulting match-ups files are serialized as NetCDF-4 files whose structure depends on the origin of the *in situ* data and is described in section 2.4.4.

#### 2.4.4 Content of the Match-Up NetCDF files

```
netcdf pimep-mdb-smos-l3-catds-locean-v5-18d_snake_20100116_v01 {
dimensions:
```

```
    TIME_SAT = UNLIMITED ; // (1 currently)
    TIME_SNAKE = 2190 ;
    N_DAYS_WIND = 10 ;
    N_3H_RAIN = 80 ;
    STRING25 = 25 ;
    STRING8 = 8 ;
```

variables:

```
float DATE_SNAKE(TIME_SNAKE) ;
    DATE_SNAKE:long_name = "Date of SNAKE" ;
    DATE_SNAKE:units = "days since 1990-01-01 00:00:00" ;
    DATE_SNAKE:standard_name = "time" ;
    DATE_SNAKE:_FillValue = -999.f ;
float LATITUDE_SNAKE(TIME_SNAKE) ;
    LATITUDE_SNAKE:long_name = "Latitude of SNAKE" ;
    LATITUDE_SNAKE:units = "degrees_north" ;
    LATITUDE_SNAKE:valid_min = -90. ;
    LATITUDE_SNAKE:valid_max = 90. ;
    LATITUDE_SNAKE:standard_name = "latitude" ;
    LATITUDE_SNAKE:_FillValue = -999.f ;
float LONGITUDE_SNAKE(TIME_SNAKE) ;
    LONGITUDE_SNAKE:long_name = "Longitude of SNAKE" ;
    LONGITUDE_SNAKE:units = "degrees_east" ;
    LONGITUDE_SNAKE:valid_min = -180. ;
    LONGITUDE_SNAKE:valid_max = 180. ;
    LONGITUDE_SNAKE:standard_name = "longitude" ;
    LONGITUDE_SNAKE:_FillValue = -999.f ;
float SSS_SNAKE(TIME_SNAKE) ;
```

```

SSS_SNAKE:long_name = "SNAKE SSS" ;
SSS_SNAKE:units = "1" ;
SSS_SNAKE:salinity_scale = "Practical Salinity Scale(PSS-78)" ;
SSS_SNAKE:standard_name = "sea_water_salinity" ;
SSS_SNAKE:_FillValue = -999.f ;
float SST_SNAKE(TIME_SNAKE) ;
SST_SNAKE:long_name = "SNAKE SST" ;
SST_SNAKE:units = "degree Celsius" ;
SST_SNAKE:standard_name = "sea_water_temperature" ;
SST_SNAKE:_FillValue = -999.f ;
float SSS_SNAKE_FILTERED(TIME_SNAKE) ;
SSS_SNAKE_FILTERED:long_name = "SNAKE SSS median filtered at satellite spatial
resolution" ;
SSS_SNAKE_FILTERED:units = "1" ;
SSS_SNAKE_FILTERED:salinity_scale = "Practical Salinity Scale(PSS-78)" ;
SSS_SNAKE_FILTERED:standard_name = "sea_water_salinity" ;
SSS_SNAKE_FILTERED:_FillValue = -999.f ;
float SST_SNAKE_FILTERED(TIME_SNAKE) ;
SST_SNAKE_FILTERED:long_name = "SNAKE SST median filtered at satellite spatial
resolution" ;
SST_SNAKE_FILTERED:units = "degree Celsius" ;
SST_SNAKE_FILTERED:standard_name = "sea_water_temperature" ;
SST_SNAKE_FILTERED:_FillValue = -999.f ;
float DISTANCE_TO_COAST_SNAKE(TIME_SNAKE) ;
DISTANCE_TO_COAST_SNAKE:long_name = "Distance to coasts at SNAKE location" ;
DISTANCE_TO_COAST_SNAKE:units = "km" ;
DISTANCE_TO_COAST_SNAKE:_FillValue = -999.f ;
float PLATFORM_NUMBER_SNAKE(TIME_SNAKE) ;
PLATFORM_NUMBER_SNAKE:long_name = "SNAKE unique identifier" ;
PLATFORM_NUMBER_SNAKE:conventions = "WMO float identifier : A9IIII" ;
PLATFORM_NUMBER_SNAKE:units = "1" ;
PLATFORM_NUMBER_SNAKE:_FillValue = -999.f ;
float DATE_Satellite_product(TIME_Sat) ;
DATE_Satellite_product:long_name = "Central time of satellite SSS file" ;
DATE_Satellite_product:units = "days since 1990-01-01 00:00:00" ;
DATE_Satellite_product:standard_name = "time" ;
float LATITUDE_Satellite_product(TIME_SNAKE) ;
LATITUDE_Satellite_product:long_name = "Satellite product latitude at SNAKE location"
;
LATITUDE_Satellite_product:units = "degrees_north" ;
LATITUDE_Satellite_product:valid_min = -90. ;
LATITUDE_Satellite_product:valid_max = 90. ;
LATITUDE_Satellite_product:standard_name = "latitude" ;
LATITUDE_Satellite_product:_FillValue = -999.f ;
float LONGITUDE_Satellite_product(TIME_SNAKE) ;
LONGITUDE_Satellite_product:long_name = "Satellite product longitude at SNAKE loca-
tion" ;
LONGITUDE_Satellite_product:units = "degrees_east" ;
LONGITUDE_Satellite_product:valid_min = -180. ;
    
```

```

LONGITUDE_Satellite_product:valid_max = 180. ;
LONGITUDE_Satellite_product:standard_name = "longitude" ;
LONGITUDE_Satellite_product:FillValue = -999.f ;
float SSS_Satellite_product(TIME_SNAKE) ;
    SSS_Satellite_product:long_name = "Satellite product SSS at SNAKE location" ;
    SSS_Satellite_product:units = "1" ;
    SSS_Satellite_product:salinity_scale = "Practical Salinity Scale(PSS-78)" ;
    SSS_Satellite_product:standard_name = "sea_surface_salinity" ;
    SSS_Satellite_product:FillValue = -999.f ;
float SST_Satellite_product(TIME_SNAKE) ;
    SST_Satellite_product:long_name = "Satellite product SST at SNAKE location" ;
    SST_Satellite_product:units = "degree Celsius" ;
    SST_Satellite_product:standard_name = "sea_surface_temperature" ;
    SST_Satellite_product:FillValue = -999.f ;
float Spatial_lags(TIME_SNAKE) ;
    Spatial_lags:long_name = "Spatial lag between SNAKE location and satellite SSS product
    pixel center" ;
    Spatial_lags:units = "km" ;
    Spatial_lags:FillValue = -999.f ;
float Time_lags(TIME_SNAKE) ;
    Time_lags:long_name = "Temporal lag between SNAKE time and satellite SSS product
    central time" ;
    Time_lags:units = "days" ;
    Time_lags:FillValue = -999.f ;
float ROSSBY_RADIUS_at_SNAKE(TIME_SNAKE) ;
    ROSSBY_RADIUS_at_SNAKE:long_name = "Baroclinic Rossby radius of deformation (Chel-
    ton et al., 1998) at SNAKE location" ;
    ROSSBY_RADIUS_at_SNAKE:units = "km" ;
    ROSSBY_RADIUS_at_SNAKE:FillValue = -999.f ;
float Ascet_daily_wind_at_SNAKE(TIME_SNAKE) ;
    Ascet_daily_wind_at_SNAKE:long_name = "Daily Ascet wind speed module at SNAKE lo-
    cation" ;
    Ascet_daily_wind_at_SNAKE:units = "m/s" ;
    Ascet_daily_wind_at_SNAKE:FillValue = -999.f ;
float CMORPH_3h_Rain_Rate_at_SNAKE(TIME_SNAKE) ;
    CMORPH_3h_Rain_Rate_at_SNAKE:long_name = "3-hourly CMORPH rain rate at SNAKE
    location" ;
    CMORPH_3h_Rain_Rate_at_SNAKE:units = "mm/3h" ;
    CMORPH_3h_Rain_Rate_at_SNAKE:FillValue = -999.f ;
float Ascet_10_prior_days_wind_at_SNAKE(TIME_SNAKE, N_DAYS_WIND) ;
    Ascet_10_prior_days_wind_at_SNAKE:long_name = "Prior 10 days time series of Ascet wind
    speed module at SNAKE location" ;
    Ascet_10_prior_days_wind_at_SNAKE:units = "m/s" ;
    Ascet_10_prior_days_wind_at_SNAKE:FillValue = -999.f ;
float CMORPH_10_prior_days_Rain_Rate_at_SNAKE(TIME_SNAKE, N_3H_RAIN) ;
    CMORPH_10_prior_days_Rain_Rate_at_SNAKE:long_name = "Prior 10 days times series of
    3-hourly CMORPH Rain Rate at SNAKE location" ;
    CMORPH_10_prior_days_Rain_Rate_at_SNAKE:units = "mm/3h" ;
    CMORPH_10_prior_days_Rain_Rate_at_SNAKE:FillValue = -999.f ;
    
```

```

float SSS_ISAS_at_SNAKE(TIME_SNAKE) ;
    SSS_ISAS_at_SNAKE:long_name = "ISAS SSS (5m depth) at SNAKE location" ;
    SSS_ISAS_at_SNAKE:units = "1" ;
    SSS_ISAS_at_SNAKE:salinity_scale = "Practical Salinity Scale(PSS-78)" ;
    SSS_ISAS_at_SNAKE:standard_name = "sea_water_salinity" ;
    SSS_ISAS_at_SNAKE:_FillValue = -999.f ;
float SSS_PCTVAR_ISAS_at_SNAKE(TIME_SNAKE) ;
    SSS_PCTVAR_ISAS_at_SNAKE:long_name = "Error on ISAS SSS (5m depth) at SNAKE
location (% variance)" ;
    SSS_PCTVAR_ISAS_at_SNAKE:units = "%" ;
    SSS_PCTVAR_ISAS_at_SNAKE:_FillValue = -999.f ;
float SSS_WOA13_at_SNAKE(TIME_SNAKE) ;
    SSS_WOA13_at_SNAKE:long_name = "WOA 2013 (DECAV-1deg) SSS (0m depth) at
SNAKE location" ;
    SSS_WOA13_at_SNAKE:units = "1" ;
    SSS_WOA13_at_SNAKE:salinity_scale = "Practical Salinity Scale(PSS-78)" ;
    SSS_WOA13_at_SNAKE:standard_name = "sea_surface_salinity" ;
    SSS_WOA13_at_SNAKE:_FillValue = -999.f ;
float SSS_STD_WOA13_at_SNAKE(TIME_SNAKE) ;
    SSS_STD_WOA13_at_SNAKE:long_name = "WOA 2013 (DECAV-1deg) SSS STD (0m
depth) at SNAKE location " ;
    SSS_STD_WOA13_at_SNAKE:units = "1" ;
    SSS_STD_WOA13_at_SNAKE:_FillValue = -999.f ;
float SSS_ISAS15_at_SNAKE(N_prof) ;
    SSS_ISAS15_at_SNAKE:long_name = "Monthly ISAS-15 SSS (5m depth) at SNAKE loca-
tion" ;
    SSS_ISAS15_at_SNAKE:units = "1" ;
    SSS_ISAS15_at_SNAKE:salinity_scale = "Practical Salinity Scale (PSS-78)" ;
    SSS_ISAS15_at_SNAKE:standard_name = "sea_water_salinity" ;
    SSS_ISAS15_at_SNAKE:_FillValue = -999.f ;
float SSS_PCTVAR_ISAS15_at_SNAKE(N_prof) ;
    SSS_PCTVAR_ISAS15_at_SNAKE:long_name = "Error on monthly ISAS-15 SSS (5m depth)
at SNAKE location (% variance)" ;
    SSS_PCTVAR_ISAS15_at_SNAKE:units = "%" ;
    SSS_PCTVAR_ISAS15_at_SNAKE:_FillValue = -999.f ;
float SSS_WOA18_at_SNAKE(N_prof) ;
    SSS_WOA18_at_SNAKE:long_name = "Monthly WOA 2018 (DECAV-1deg) SSS (0m depth)
at SNAKE location" ;
    SSS_WOA18_at_SNAKE:units = "1" ;
    SSS_WOA18_at_SNAKE:salinity_scale = "Practical Salinity Scale (PSS-78)" ;
    SSS_WOA18_at_SNAKE:standard_name = "sea_surface_salinity" ;
    SSS_WOA18_at_SNAKE:_FillValue = -999.f ;
float SSS_STD_WOA18_at_SNAKE(N_prof) ;
    SSS_STD_WOA18_at_SNAKE:long_name = "Monthly WOA 2018 (DECAV-1deg) SSS STD
(0m depth) at SNAKE location " ;
    SSS_STD_WOA18_at_SNAKE:units = "1" ;
    SSS_STD_WOA18_at_SNAKE:_FillValue = -999.f ;
float SEA_ICE_CONCENTRATION_at_SNAKE(N_prof) ;
    SEA_ICE_CONCENTRATION_at_SNAKE:long_name = "Daily sea ice area fraction (EU-
    
```



```

METSAT OSI-SAF OSI-450) at SNAKE location (%)” ;
    SEA_ICE_CONCENTRATION_at_SNAKE:units = "1" ;
    SEA_ICE_CONCENTRATION_at_SNAKE:standard_name = "sea_ice_area_fraction" ;
    SEA_ICE_CONCENTRATION_at_SNAKE:FillValue = -999.f ;
float CCMP_6h_Wind_Speed_at_SNAKE(N_prof) ;
    CCMP_6h_Wind_Speed_at_SNAKE:long_name = "6-hourly CCMP wind speed at SNAKE
location" ;
    CCMP_6h_Wind_Speed_at_SNAKE:units = "m s-1" ;
    CCMP_6h_Wind_Speed_at_SNAKE:standard_name = "wind_speed" ;
    CCMP_6h_Wind_Speed_at_SNAKE:FillValue = -999.f ;
float CCMP_10_prior_days_Wind_Speed_at_SNAKE(N_prof, N_DAYS_WIND_CCMP) ;
    CCMP_10_prior_days_Wind_Speed_at_SNAKE:long_name = "Prior 10 days time series of
CCMP wind speed at SNAKE location" ;
    CCMP_10_prior_days_Wind_Speed_at_SNAKE:units = "m s-1" ;
    CCMP_10_prior_days_Wind_Speed_at_SNAKE:standard_name = "wind_speed" ;
    CCMP_10_prior_days_Wind_Speed_at_SNAKE:FillValue = -999.f ;
float CDM_GLOBCOLOUR_at_SNAKE(N_prof) ;
    CDM_GLOBCOLOUR_at_SNAKE:long_name = "8-day Coloured dissolved and detrital or-
ganic materials - mean of the binned pixels at SNAKE location" ;
    CDM_GLOBCOLOUR_at_SNAKE:units = "m-1" ;
    CDM_GLOBCOLOUR_at_SNAKE:standard_name = "volume_absorption_coefficient_of_radiative_flux_in_sea_wat
;
    CDM_GLOBCOLOUR_at_SNAKE:FillValue = -999.f ;
float CHL1_GLOBCOLOUR_at_SNAKE(N_prof) ;
    CHL1_GLOBCOLOUR_at_SNAKE:long_name = "8-day Chlorophyll concentration - mean
of the binned pixels at SNAKE location" ;
    CHL1_GLOBCOLOUR_at_SNAKE:units = "mg m-3" ;
    CHL1_GLOBCOLOUR_at_SNAKE:standard_name = "mass_concentration_of_chlorophyll_a_in_sea_water"
;
    CHL1_GLOBCOLOUR_at_SNAKE:FillValue = -999.f ;
float EVAPORATION_OAFLUX_at_SNAKE(N_prof) ;
    EVAPORATION_OAFLUX_at_SNAKE:long_name = "Daily mean evaporation rate (OAFlux)
at SNAKE location" ;
    EVAPORATION_OAFLUX_at_SNAKE:units = "cm year-1" ;
    EVAPORATION_OAFLUX_at_SNAKE:FillValue = -999.f ;
float SSS_SCRIPPS_at_SNAKE(N_prof) ;
    SSS_SCRIPPS_at_SNAKE:long_name = "Argo gridded monthly mean SSS (0m depth) from
SCRIPPS (Roemmich-Gilson) at SNAKE location" ;
    SSS_SCRIPPS_at_SNAKE:units = "1" ;
    SSS_SCRIPPS_at_SNAKE:salinity_scale = "Practical Salinity Scale (PSS-78)" ;
    SSS_SCRIPPS_at_SNAKE:standard_name = "sea_water_salinity" ;
    SSS_SCRIPPS_at_SNAKE:FillValue = -999.f ;
float SSS_IPRC_at_SNAKE(N_prof) ;
    SSS_IPRC_at_SNAKE:long_name = "Argo gridded monthly mean SSS (0m depth) from
IPRC at SNAKE location" ;
    SSS_IPRC_at_SNAKE:units = "1" ;
    SSS_IPRC_at_SNAKE:salinity_scale = "Practical Salinity Scale (PSS-78)" ;
    SSS_IPRC_at_SNAKE:standard_name = "sea_water_salinity" ;
    SSS_IPRC_at_SNAKE:FillValue = -999.f ;
    
```

```

float SST_AVHRR_at_SNAKE(N_prof) ;
    SST_AVHRR_at_SNAKE:long_name = "Daily OI AVHRR-only v2 SST (Reynolds et al.,
2007) at SNAKE location" ;
    SST_AVHRR_at_SNAKE:units = "degree Celsius" ;
    SST_AVHRR_at_SNAKE:standard_name = "sea_water_temperature" ;
    SST_AVHRR_at_SNAKE:FillValue = -999.f ;
float U_EKMAN_GLOBCURRENT_at_SNAKE(N_prof) ;
    U_EKMAN_GLOBCURRENT_at_SNAKE:long_name = "15m depth Ekman current veloc-
ity: zonal component at SNAKE location" ;
    U_EKMAN_GLOBCURRENT_at_SNAKE:units = "m s-1" ;
    U_EKMAN_GLOBCURRENT_at_SNAKE:FillValue = -999.f ;
float V_EKMAN_GLOBCURRENT_at_SNAKE(N_prof) ;
    V_EKMAN_GLOBCURRENT_at_SNAKE:long_name = "15m depth Ekman current veloc-
ity: meridian component at SNAKE location" ;
    V_EKMAN_GLOBCURRENT_at_SNAKE:units = "m s-1" ;
    V_EKMAN_GLOBCURRENT_at_SNAKE:FillValue = -999.f ;
float U_GEOSTROPHIC_GLOBCURRENT_at_SNAKE(N_prof) ;
    U_GEOSTROPHIC_GLOBCURRENT_at_SNAKE:long_name = "Absolute geostrophic ve-
locity: zonal component at SNAKE location" ;
    U_GEOSTROPHIC_GLOBCURRENT_at_SNAKE:units = "m s-1" ;
    U_GEOSTROPHIC_GLOBCURRENT_at_SNAKE:FillValue = -999.f ;
float V_GEOSTROPHIC_GLOBCURRENT_at_SNAKE(N_prof) ;
    V_GEOSTROPHIC_GLOBCURRENT_at_SNAKE:long_name = "Absolute geostrophic ve-
locity: meridian component at SNAKE location" ;
    V_GEOSTROPHIC_GLOBCURRENT_at_SNAKE:units = "m s-1" ;
    V_GEOSTROPHIC_GLOBCURRENT_at_SNAKE:FillValue = -999.f ;

// global attributes:
:Conventions = "CF-1.6" ;
:title = "Salinity Snake Match-Up Database" ;
:Satellite_product_name = "SMOS SSS L3 v5 - 18 Days (CATDS-CECOS-LOCEAN)" ;
:Satellite_product_spatial_resolution = "25 km" ;
:Satellite_product_temporal_resolution = "18 days" ;
:Satellite_product_filename = "v5/18days/SMOS.L3-DEBIAS.LOCEAN.AD.20100116.EASE.18d.25km.v05.nc" ;
:Match-Up_spatial_window_radius_in_km = 25;
:Match-Up_temporal_window_radius_in_days = 2;
:start_time = "20100114T000005Z" ;
:stop_time = "20100118T235026Z" ;
:northernmost_latitude = 77.676f ;
:southernmost_latitude = -66.423f ;
:westernmost_longitude = -179.219f ;
:easternmost_longitude = 179.199f ;
:geospatial_lat_units = "degrees north" ;
:geospatial_lat_resolution = "25 km" ;
:geospatial_lon_units = "degrees east" ;
:geospatial_lon_resolution = "25 km" ;
:institution = "ESA-IFREMER-ODL-OCEANSOPE" ;
:project_name = "SMOS Pilot-Mission Exploitation Platform (Pi-MEP) for salinity" ;
:project_url = "https://www.salinity-pimep.org" ;

```

```

:license = "Pi-MEP data use is free and open" ;
:product_version = "1.0" ;
:keywords = "Oceans > Ocean Salinity > Sea Surface Salinity" ;
:acknowledgment = "Please acknowledge the use of these data with the following state-
ment: These data were provided by the SMOS Pilot-Mission Exploitation Platform (Pi-MEP)
for salinity" ;
:SOURCE = "v5/18days/SMOS_L3_DEBIAS_LOCEAN_AD_20100116_EASE_18d_25km_v05.nc" ;
:references = "https://www.salinity-pimep.org" ;
:history = "Processed on 2018-04-18 using MDB_generator" ;
:date_created = "2018-04-18 17:09:30" ;
}
    
```

## 2.5 MDB characteristics for the particular *in situ*/satellite pairs

### 2.5.1 Number of paired SSS data as a function of time and distance to coast

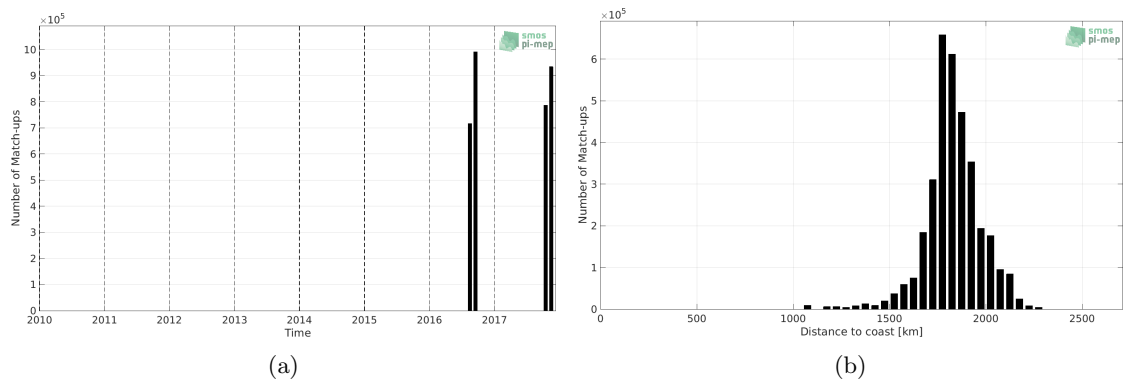


Figure 1: Number of match-ups between Salinity Snake and SMOS SSS L3 v5 - 18 Days (CATDS-CECOS-LOCEAN) SSS as a function of time (a) and as function of the distance to coast (b) over the SPURS 2 Pi-MEP region and for the full satellite product period.

### 2.5.2 Histograms of the SSS match-ups

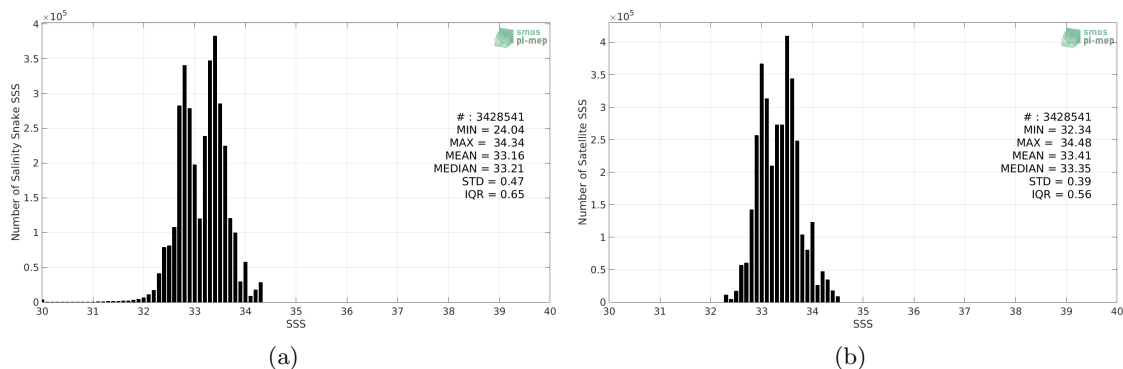


Figure 2: Histograms of SSS from Salinity Snake (a) and SMOS SSS L3 v5 - 18 Days (CATDS-CECOS-LOCEAN) (b) considering all match-up pairs per bins of 0.1 over the SPURS 2 Pi-MEP region and for the full satellite product period.

### 2.5.3 Distribution of *in situ* SSS depth measurements

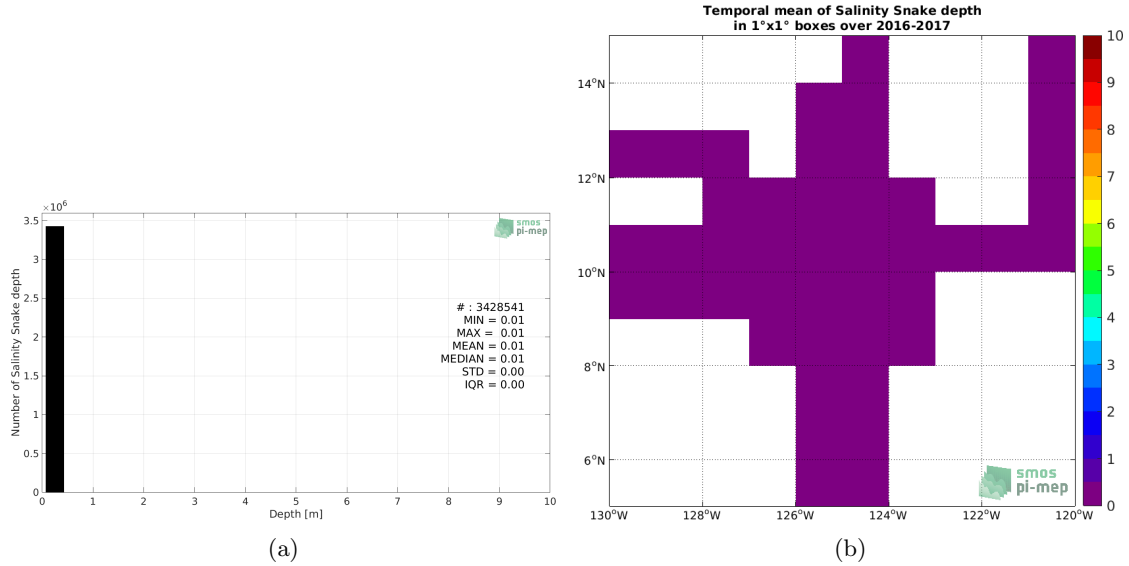


Figure 3: Histograms of the depth of the upper level SSS measurements from Salinity Snake in the Match-up DataBase for the SPURS 2 Pi-MEP region (a) and temporal mean spatial distribution of pressure of the *in situ* SSS data over  $1^\circ \times 1^\circ$  boxes and for the full satellite product period (b).

### 2.5.4 Spatial Distribution of Match-ups

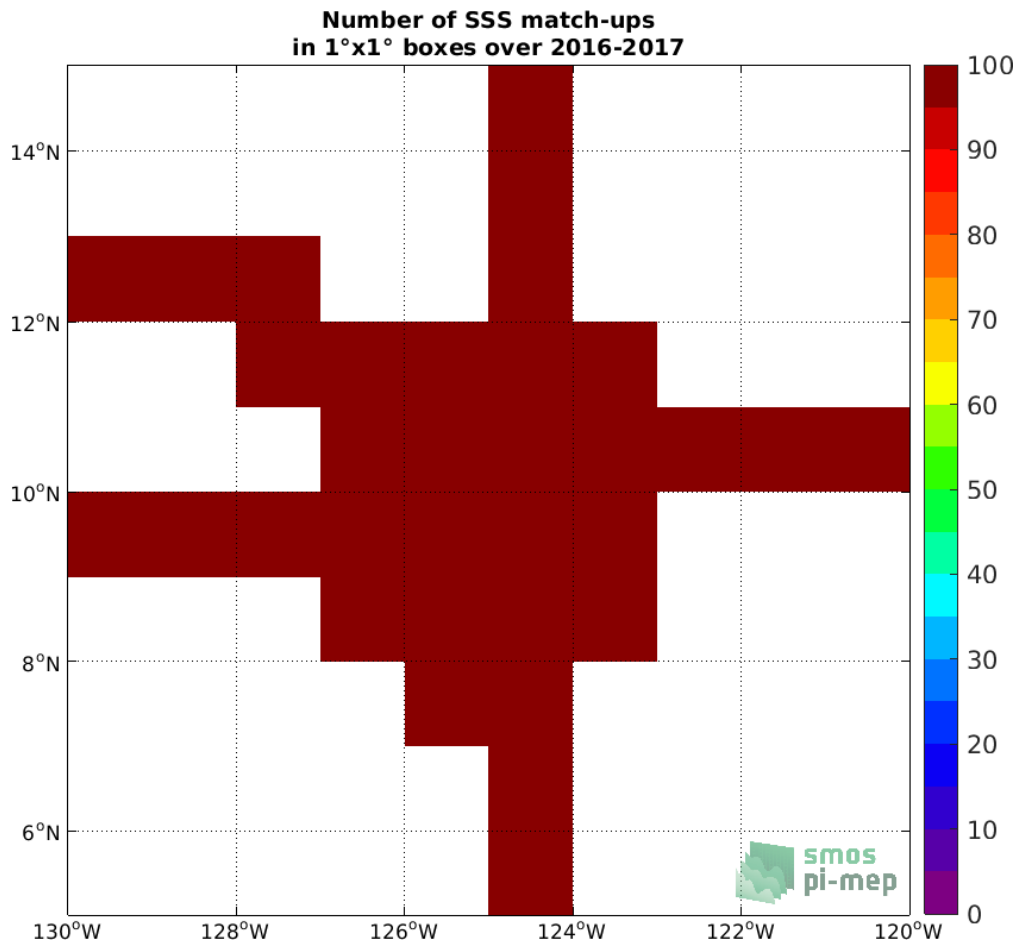


Figure 4: Number of SSS match-ups between Salinity Snake SSS and the SMOS SSS L3 v5 - 18 Days (CATDS-CECOS-LOCEAN) SSS product for the SPURS 2 Pi-MEP region over 1°x1° boxes and for the full satellite product period.

### 2.5.5 Histograms of the spatial and temporal lags of the match-ups pairs

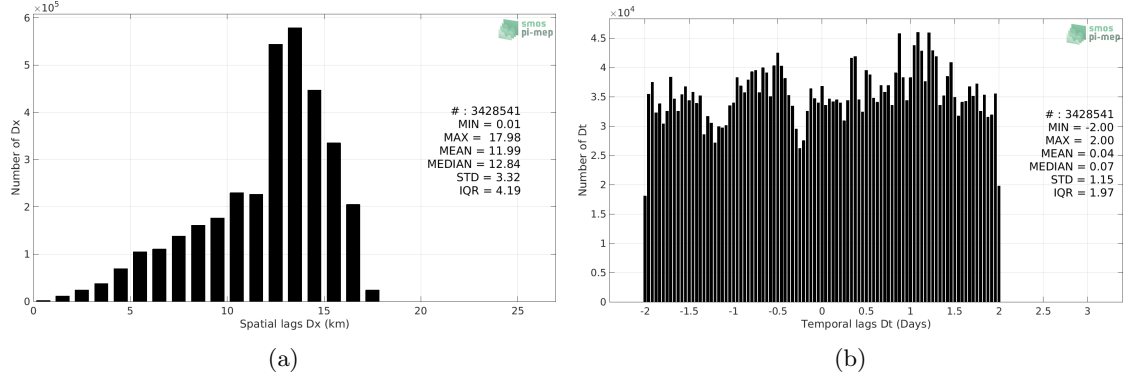


Figure 5: Histograms of the spatial (a) and temporal (b) lags between the time of the Salinity Snake measurements and the date of the corresponding SMOS SSS L3 v5 - 18 Days (CATDS-CECOS-LOCEAN) SSS product.

## 3 MDB file Analyses

### 3.1 Spatial Maps of the Temporal mean and Std of *in situ* and satellite SSS and of the difference ( $\Delta$ SSS)

In Figure 6, we show maps of temporal mean (left) and standard deviation (right) of the SMOS SSS L3 v5 - 18 Days (CATDS-CECOS-LOCEAN) (top) and of the Salinity Snake *in situ* dataset at the collected Pi-MEP match-up pairs. The temporal mean and std are gridded over the full satellite product period and over spatial boxes of size  $1^\circ \times 1^\circ$ .

At the bottom of Figure 6, the temporal mean (left) and standard deviation (right) of the differences between the satellite SSS product and *in situ* data found at match-up pairs, namely  $\Delta$ SSS(Satellite -Salinity Snake), is also gridded over the full satellite product period and over spatial boxes of size  $1^\circ \times 1^\circ$ .

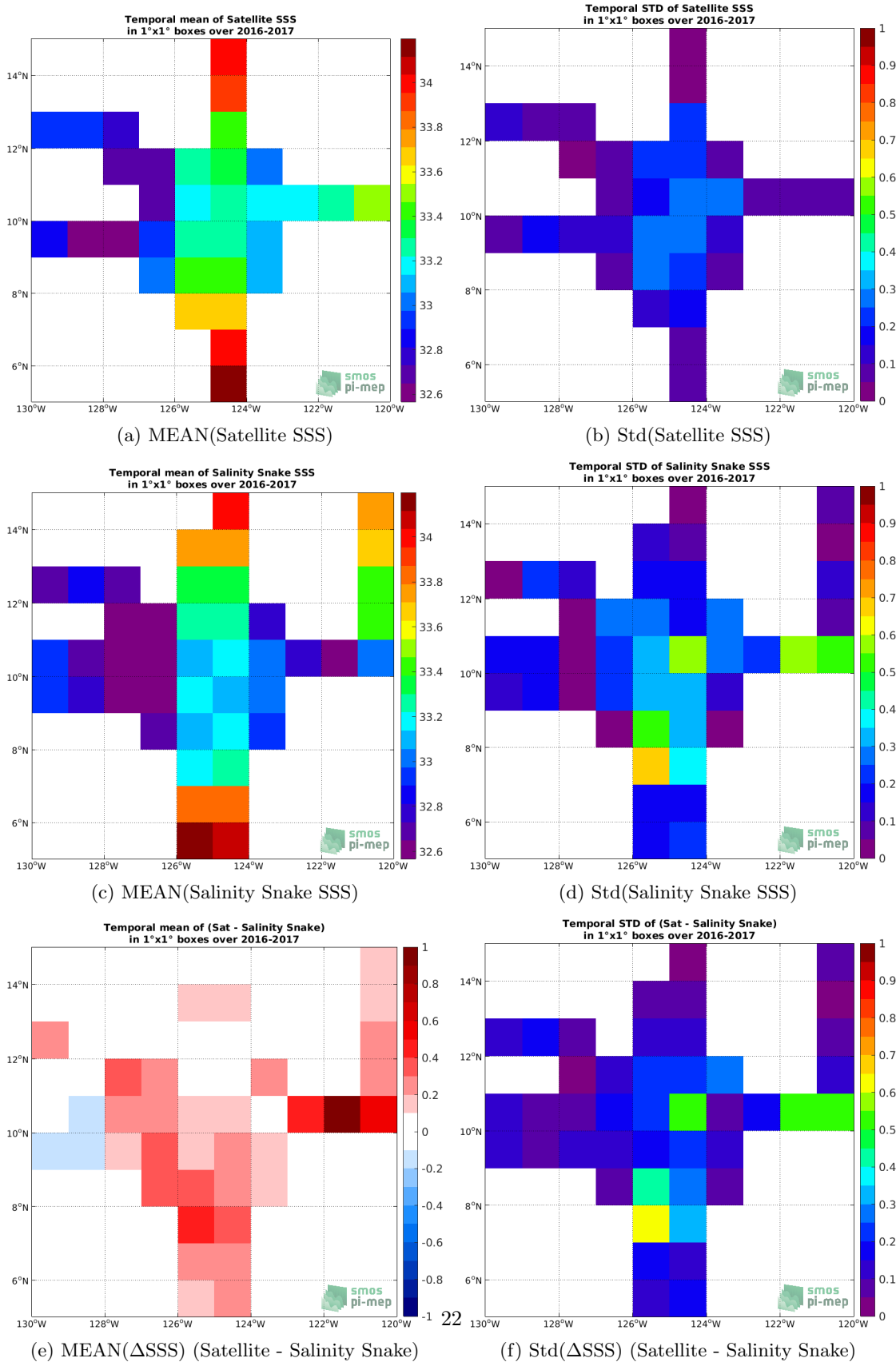


Figure 6: Temporal mean (left) and Std (right) of SSS from SMOS SSS L3 v5 - 18 Days (CATDS-CECOS-LOCEAN) (top), Salinity Snake (middle), and of  $\Delta$ SSS (Satellite - Salinity Snake). Only match-up pairs are used to generate these maps.

### 3.2 Time series of the monthly median and Std of *in situ* and satellite SSS and of the difference ( $\Delta$ SSS)

In the top panel of Figure 7, we show the time series of the monthly median SSS estimated over the full SPURS 2 Pi-MEP region for both SMOS SSS L3 v5 - 18 Days (CATDS-CECOS-LOCEAN) satellite SSS product (in black) and the Salinity Snake *in situ* dataset (in blue) at the collected Pi-MEP match-up pairs.

In the middle panel of Figure 7, we show the time series of the monthly median of  $\Delta$ SSS (Satellite - Salinity Snake) for the collected Pi-MEP match-up pairs and estimated over the full SPURS 2 Pi-MEP region.

In the bottom panel of Figure 7, we show the time series of the monthly standard deviation of  $\Delta$ SSS (Satellite - Salinity Snake) for the collected Pi-MEP match-up pairs and estimated over the full SPURS 2 Pi-MEP region.

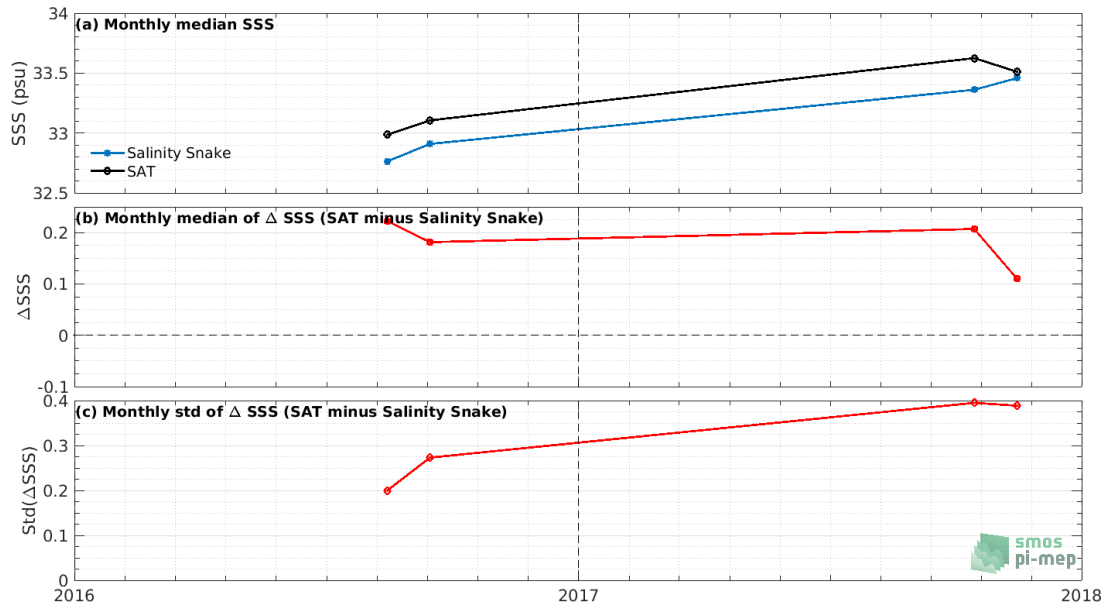


Figure 7: Time series of the monthly median SSS (top), median of  $\Delta$ SSS (Satellite - Salinity Snake) and Std of  $\Delta$ SSS (Satellite - Salinity Snake) over the SPURS 2 Pi-MEP region considering all match-ups collected by the Pi-MEP.

### 3.3 Zonal mean and Std of *in situ* and satellite SSS and of the difference $\Delta$ SSS

In Figure 8 left panel, we show the zonal mean SSS considering all Pi-MEP match-up pairs for both SMOS SSS L3 v5 - 18 Days (CATDS-CECOS-LOCEAN) satellite SSS product (in black) and the Salinity Snake *in situ* dataset (in blue). The full satellite SSS product period is used to derive the mean.

In the right panel of Figure 8, we show the zonal mean of  $\Delta$ SSS (Satellite - Salinity Snake) for all the collected Pi-MEP match-up pairs estimated over the full satellite product period.



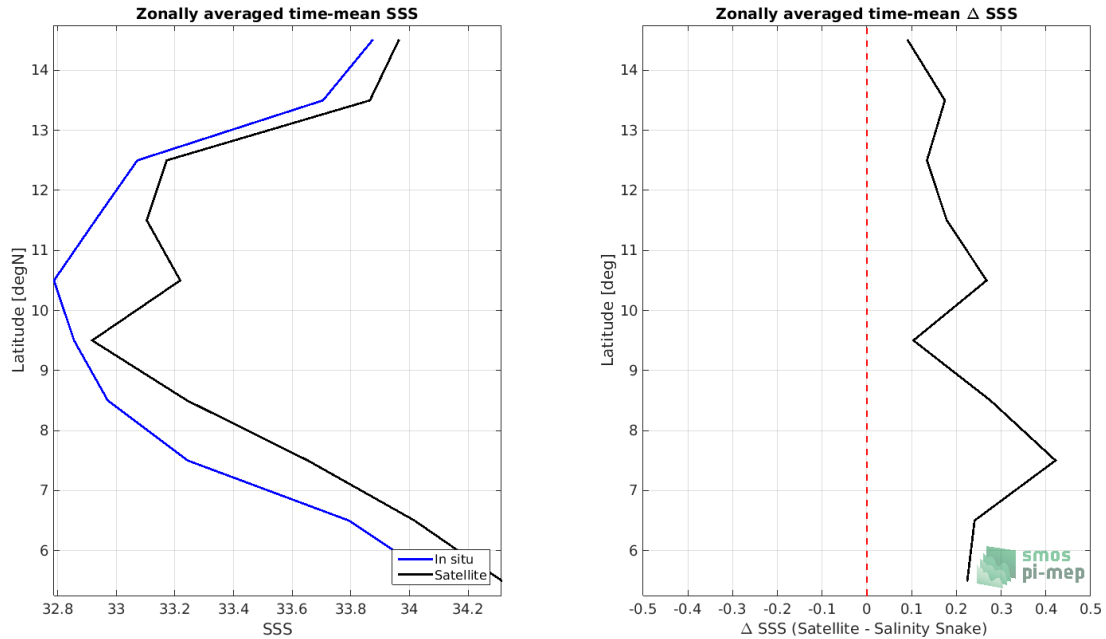


Figure 8: Left panel: Zonal mean SSS from SMOS SSS L3 v5 - 18 Days (CATDS-CECOS-LOCEAN) satellite product (black) and from Salinity Snake (blue). Right panel: Zonal mean of  $\Delta$ SSS (Satellite - Salinity Snake) for all the collected Pi-MEP match-up pairs estimated over the full satellite product period.

### 3.4 Scatterplots of satellite vs *in situ* SSS by latitudinal bands

In Figure 9, contour maps of the concentration of SMOS SSS L3 v5 - 18 Days (CATDS-CECOS-LOCEAN) SSS (y-axis) versus Salinity Snake SSS (x-axis) at match-up pairs for different latitude bands: (a) 80°S-80°N, (b) 20°S-20°N, (c) 40°S-20°S and 20°N-40°N and (d) 60°S-40°S and 40°N-60°N. For each plot, the red line shows  $x=y$ . The black thin and dashed lines indicate a linear fit through the data cloud and the  $\pm 95\%$  confidence levels, respectively. The number match-up pairs  $n$ , the slope and  $R^2$  coefficient of the linear fit, the root mean square (RMS) and the mean bias between satellite and *in situ* data are indicated for each latitude band in each plots.

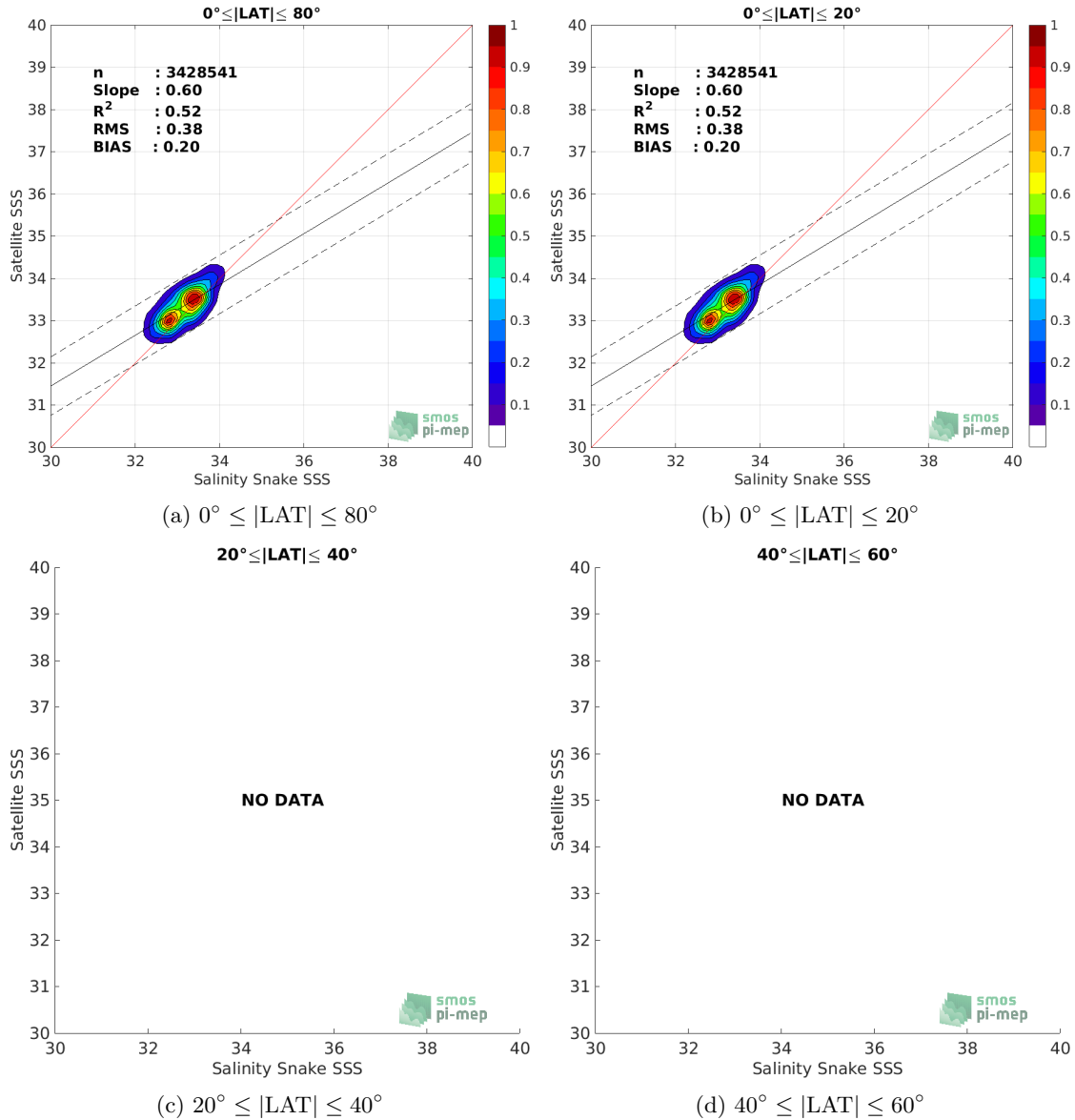


Figure 9: Contour maps of the concentration of SMOS SSS L3 v5 - 18 Days (CATDS-CECOS-LOCEAN) SSS (y-axis) versus Salinity Snake SSS (x-axis) at match-up pairs for different latitude bands. For each plot, the red line shows  $x=y$ . The black thin and dashed lines indicate a linear fit through the data cloud and the  $\pm 95\%$  confidence levels, respectively. The number match-up pairs  $n$ , the slope and  $R^2$  coefficient of the linear fit, the root mean square (RMS) and the mean bias between satellite and *in situ* data are indicated for each latitude band in each plots.

### 3.5 Time series of the monthly median and Std of the $\Delta\text{SSS}$ sorted by latitudinal bands

In Figure 10, time series of the monthly median (red curves) of  $\Delta\text{SSS}$  (Satellite - Salinity Snake) and  $\pm 1$  Std (black vertical thick bars) as function of time for all the collected Pi-MEP match-up

pairs estimated over the SPURS 2 Pi-MEP region and for the full satellite product period are shown for different latitude bands: (a) 80°S-80°N, (b) 20°S-20°N, (c) 40°S-20°S and 20°N-40°N and (d) 60°S-40°S and 40°N-60°N.

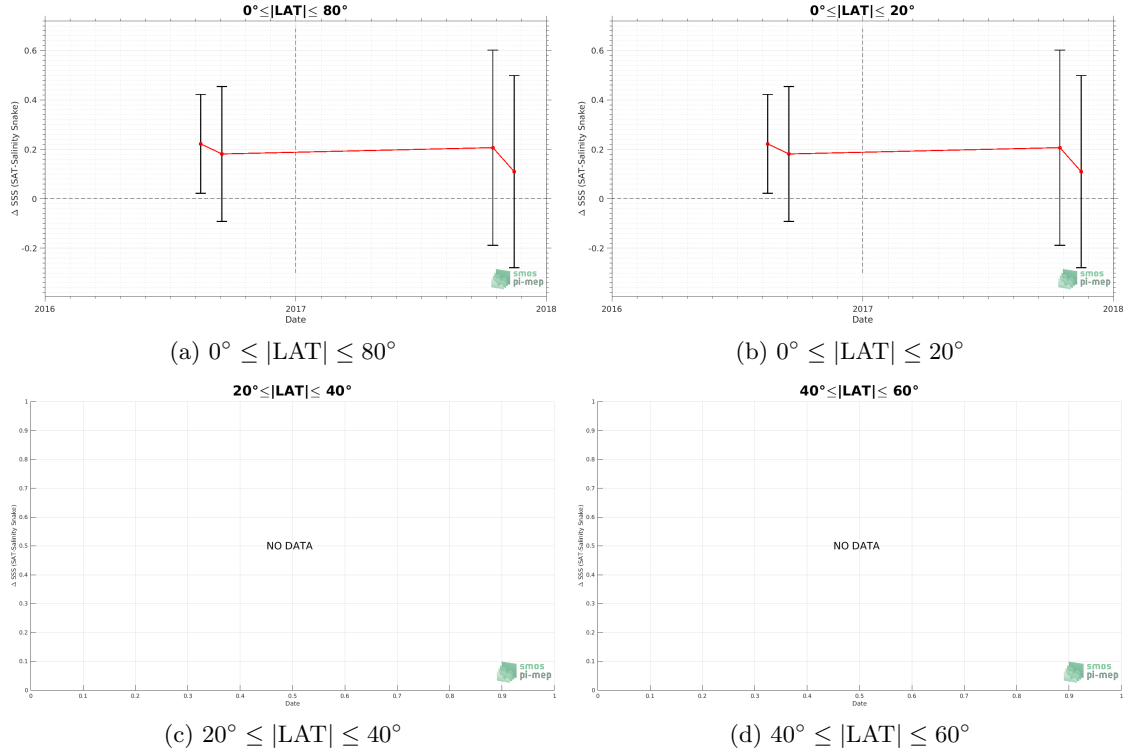


Figure 10: Monthly median (red curves) of  $\Delta\text{SSS}$  (Satellite - Salinity Snake) and  $\pm 1$  Std (black vertical thick bars) as function of time for all the collected Pi-MEP match-up pairs estimated over the SPURS 2 Pi-MEP region and for the full satellite product period are shown for different latitude bands: (a) 80°S-80°N, (b) 20°S-20°N, (c) 40°S-20°S and 20°N-40°N and (d) 60°S-40°S and 40°N-60°N.

### 3.6 $\Delta\text{SSS}$ sorted as function of geophysical parameters

In Figure 11, we classify the match-up differences  $\Delta\text{SSS}$  (Satellite - *in situ*) between SMOS SSS L3 v5 - 18 Days (CATDS-CECOS-LOCEAN) and Salinity Snake SSS as function of the geophysical conditions at match-up points. The median and std of  $\Delta\text{SSS}$  (Satellite - Salinity Snake) is thus evaluated as function of the

- *in situ* SSS values per bins of width 0.2,
- *in situ* SST values per bins of width 1°C,
- ASCAT daily wind values per bins of width 1 m/s,
- CMORPH 3-hourly rain rates per bins of width 1 mm/h, and,
- distance to coasts per bins of width 50 km.
- *in situ* measurement depth (if relevant).

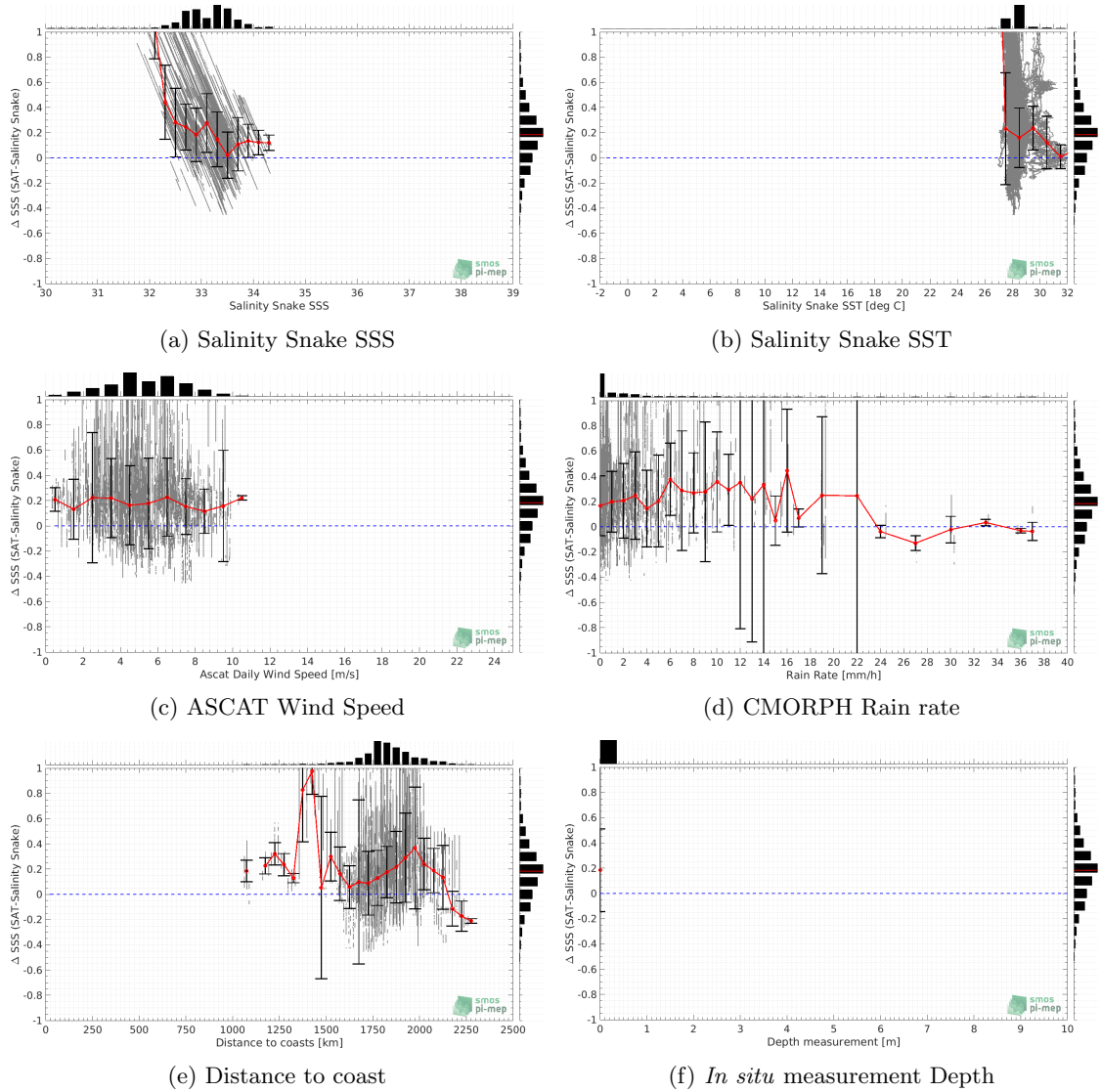


Figure 11:  $\Delta$ SSS (Satellite - Salinity Snake) sorted as function of Salinity Snake SSS a), Salinity Snake SST b), ASCAT Wind speed c), CMORPH rain rate d), distance to coast (e) and *in situ* measurement depth (f). In all plots the median and Std of  $\Delta$ SSS for each bin is indicated by the red curves and black vertical thick bars ( $\pm 1$  Std)

### 3.7 $\Delta$ SSS maps and statistics for different geophysical conditions

In Figures 12 and 13, we focus on sub-datasets of the match-up differences  $\Delta$ SSS (Satellite - *in situ*) between SMOS SSS L3 v5 - 18 Days (CATDS-CECOS-LOCEAN) and Salinity Snake for the following specific geophysical conditions:

- **C1**: if the local value at *in situ* location of estimated rain rate is zero, mean daily wind is in the range [3, 12] m/s, the SST is  $> 5^\circ\text{C}$  and distance to coast is  $> 800$  km.
- **C2**: if the local value at *in situ* location of estimated rain rate is zero, mean daily wind is

in the range [3, 12] m/s.

- **C3**:if the local value at *in situ* location of estimated rain rate is high (ie.  $> 1$  mm/h) and mean daily wind is low (ie.  $< 4$  m/s).
- **C5**:if the *in situ* data is located where the climatological SSS standard deviation is low (ie. above  $< 0.2$ ).
- **C6**:if the *in situ* data is located where the climatological SSS standard deviation is high (ie. above  $> 0.2$ ).

For each of these conditions, the temporal mean (gridded over spatial boxes of size  $1^\circ \times 1^\circ$ ) and the histogram of the difference  $\Delta SSS$  (Satellite - *in situ*) are presented.

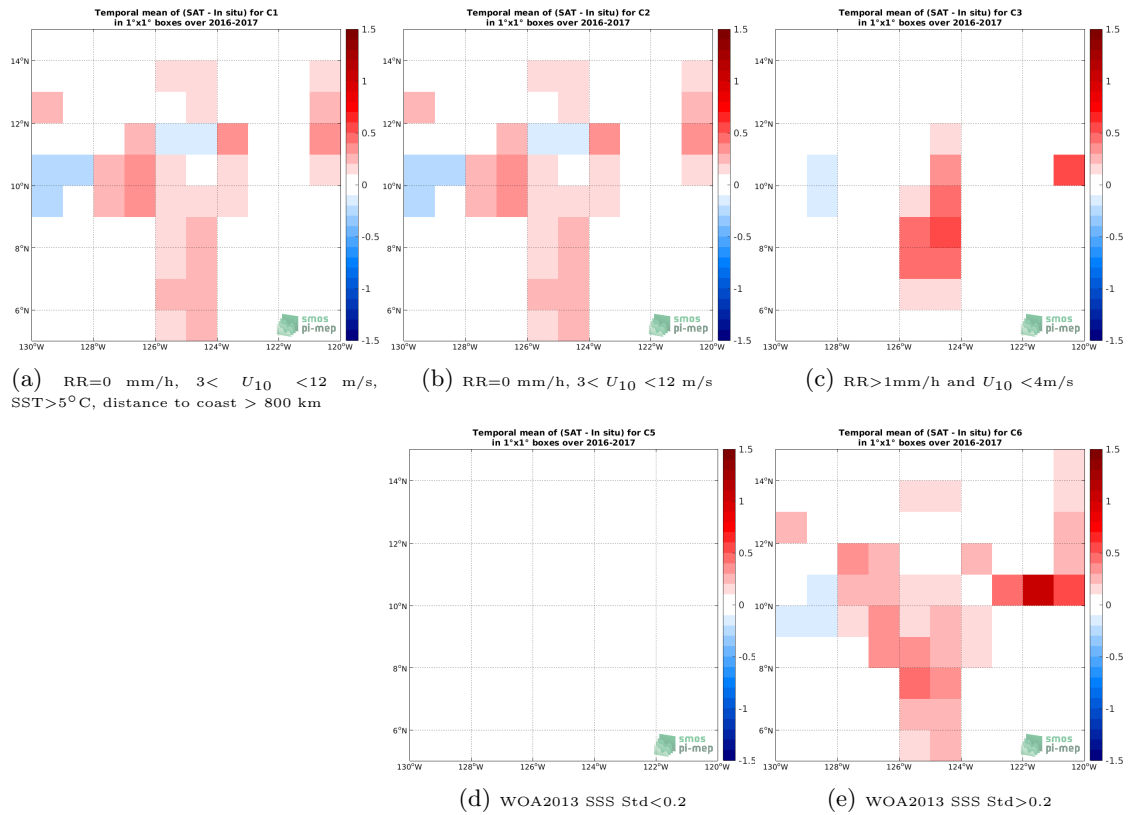


Figure 12: Temporal mean gridded over spatial boxes of size  $1^\circ \times 1^\circ$  of  $\Delta SSS$  (SMOS SSS L3 v5 - 18 Days (CATDS-CECOS-LOCEAN) - Salinity Snake) for 5 different subdatasets corresponding to:RR=0 mm/h,  $3 < U_{10} < 12$  m/s, SST $>5^\circ\text{C}$ , distance to coast  $> 800$  km (a), RR=0 mm/h,  $3 < U_{10} < 12$  m/s (b), RR $>1$ mm/h and  $U_{10} < 4$ m/s (c), WOA2013 SSS Std $<0.2$  (d), WOA2013 SSS Std $>0.2$  (e).

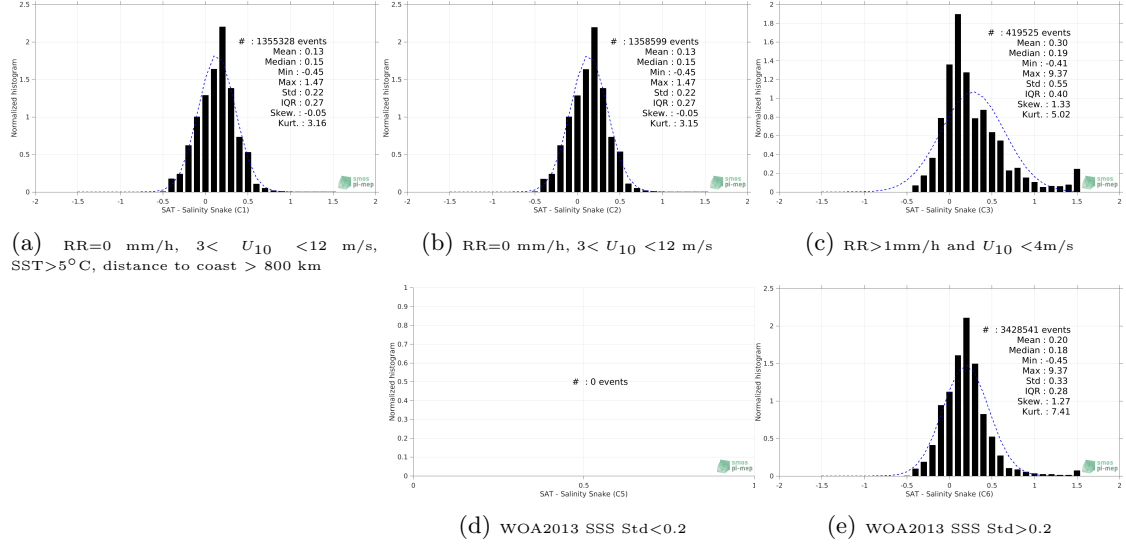


Figure 13: Normalized histogram of  $\Delta$ SSS (SMOS SSS L3 v5 - 18 Days (CATDS-CECOS-LOCEAN) - Salinity Snake) for 5 different subdatasets corresponding to: RR=0 mm/h,  $3 < U_{10} < 12$  m/s, SST>5°C, distance to coast > 800 km (a), RR=0 mm/h,  $3 < U_{10} < 12$  m/s (b), RR>1mm/h and  $U_{10} < 4$ m/s (c), WOA2013 SSS Std<0.2 (d), WOA2013 SSS Std>0.2 (e).

## 4 Summary

► Table 1 shows the mean, median, standard deviation (Std), root mean square (RMS), interquartile range (IQR), correlation coefficient ( $r^2$ ) and robust standard deviation (Std\*) of the match-up differences  $\Delta$ SSS (Satellite - *in situ*) between SMOS SSS L3 v5 - 18 Days (CATDS-CECOS-LOCEAN) and Salinity Snake derived over the SPURS 2 Pi-MEP region and for the full satellite product period and for the following conditions:

- all: All the match-up pairs satellite/*in situ* SSS values are used to derive the statistics
- C1: only pairs where RR=0 mm/h,  $3 < U_{10} < 12$  m/s, SST>5°C, distance to coast > 800 km
- C2: only pairs where RR=0 mm/h,  $3 < U_{10} < 12$  m/s
- C3: only pairs where RR>1mm/h and  $U_{10} < 4$ m/s
- C5: only pairs where WOA2013 SSS Std<0.2
- C6: only pairs at WOA2013 SSS Std>0.2
- C7a: only pairs with a distance to coast < 150 km.
- C7b: only pairs with a distance to coast in the range [150, 800] km.
- C7c: only pairs with a distance to coast > 800 km.
- C8a: only pairs where SST is < 5°C.
- C8b: only pairs where SST is in the range [5, 15]°C.

- C8c: only pairs where SST is  $> 15^{\circ}\text{C}$ .
- C9a: only pairs where SSS is  $< 33$ .
- C9b: only pairs where SSS is in the range  $[33, 37]$ .
- C9c: only pairs where SSS is  $> 37$ .

**Table 1: Statistics of  $\Delta\text{SSS}$  (Satellite - Salinity Snake)**

Condition	#	Median	Mean	Std	RMS	IQR	$r^2$	Std*
all	3428541	0.18	0.20	0.33	0.38	0.28	0.52	0.21
C1	1355328	0.15	0.13	0.22	0.25	0.27	0.79	0.20
C2	1358599	0.15	0.13	0.22	0.25	0.27	0.79	0.20
C3	419525	0.19	0.30	0.55	0.63	0.40	0.09	0.29
C5	0	NaN	NaN	NaN	NaN	NaN	NaN	NaN
C6	3428541	0.18	0.20	0.33	0.38	0.28	0.52	0.21
C7a	0	NaN	NaN	NaN	NaN	NaN	NaN	NaN
C7b	0	NaN	NaN	NaN	NaN	NaN	NaN	NaN
C7c	3428541	0.18	0.20	0.33	0.38	0.28	0.52	0.21
C8a	0	NaN	NaN	NaN	NaN	NaN	NaN	NaN
C8b	0	NaN	NaN	NaN	NaN	NaN	NaN	NaN
C8c	3402834	0.18	0.20	0.33	0.38	0.28	0.52	0.21
C9a	1385563	0.24	0.32	0.42	0.52	0.24	0.00	0.17
C9b	2042978	0.12	0.12	0.22	0.25	0.31	0.51	0.23
C9c	0	NaN	NaN	NaN	NaN	NaN	NaN	NaN

► Table 2 presents statistics of  $\Delta\text{SSS}$  (Satellite - **ISAS**) using only ISAS SSS values with  $\text{PCTVAR} < 80\%$ .

**Table 2: Statistics of  $\Delta\text{SSS}$  (Satellite - ISAS)**

Condition	#	Median	Mean	Std	RMS	IQR	$r^2$	Std*
all	3428541	0.10	0.12	0.21	0.24	0.28	0.70	0.21
C1	1355328	0.10	0.11	0.21	0.24	0.27	0.77	0.20
C2	1358599	0.10	0.11	0.21	0.24	0.27	0.77	0.20
C3	419525	0.11	0.14	0.18	0.23	0.34	0.55	0.24
C5	0	NaN	NaN	NaN	NaN	NaN	NaN	NaN
C6	3428541	0.10	0.12	0.21	0.24	0.28	0.70	0.21
C7a	0	NaN	NaN	NaN	NaN	NaN	NaN	NaN
C7b	0	NaN	NaN	NaN	NaN	NaN	NaN	NaN
C7c	3428541	0.10	0.12	0.21	0.24	0.28	0.70	0.21
C8a	0	NaN	NaN	NaN	NaN	NaN	NaN	NaN
C8b	0	NaN	NaN	NaN	NaN	NaN	NaN	NaN
C8c	3402834	0.10	0.12	0.21	0.24	0.29	0.70	0.21
C9a	1385563	0.08	0.06	0.20	0.21	0.24	0.37	0.18
C9b	2042978	0.13	0.16	0.21	0.27	0.33	0.59	0.24
C9c	0	NaN	NaN	NaN	NaN	NaN	NaN	NaN

► Numerical values can be downloaded as csv files for [Table 1](#) and [Table 2](#).

## 5 More Comparison/Validation Materials

### 5.1 Comparisons with other satellite products

► Table 1 shows the mean, median, standard deviation (Std), root mean square (RMS), interquartile range (IQR), correlation coefficient ( $r^2$ ) and robust standard deviation (Std\*) of the match-up differences  $\Delta$ SSS (Satellite - Salinity Snake) between different satellite products and **Salinity Snake** derived over the SPURS 2 Pi-MEP region considering all match-up pairs satellite/*in situ* SSS values to derive the statistics:

**Table 1: Statistics of  $\Delta$ SSS (Satellite - *in situ*) - All**

Satellite products	#	Median	Mean	Std	RMS	IQR	$r^2$	Std*
smos-l2-v662	1659193	0.07	0.06	0.64	0.64	0.92	0.16	0.69
smos-l3-catds-ifr-v2-1d-05deg	2050589	0.41	0.44	0.51	0.67	0.74	0.03	0.56
smos-l3-catds-ifr-v2-1m-025deg	1644963	0.44	0.45	0.39	0.59	0.47	0.30	0.34
smos-l3-catds-cpdc-v321-l2q	686962	0.32	0.33	0.66	0.74	1.02	0.16	0.77
smos-l3-catds-cpdc-v317-10d-25km	1400123	0.22	0.26	0.41	0.49	0.39	0.38	0.29
smos-l3-catds-cpdc-v317-1m-25km	578539	0.19	0.21	0.42	0.47	0.44	0.39	0.32
smos-l3-catds-locean-v5-9d	3428541	0.17	0.20	0.35	0.40	0.34	0.49	0.25
smos-l3-catds-locean-v5-18d	3428541	0.18	0.20	0.33	0.38	0.28	0.52	0.21
smos-l3-bec-v2-9d	955388	0.59	0.62	0.40	0.74	0.48	0.27	0.36
smos-l3-icdc-v3-1m	1646611	0.03	0.02	0.28	0.28	0.35	0.45	0.26
smos-l4-catds-ifr-v2-1w	765908	0.05	0.08	0.32	0.33	0.35	0.28	0.26
smap-l2-rss-v4	1724171	0.16	0.14	0.48	0.50	0.50	0.30	0.38
smap-l3-rss-v4-8dr	3419493	-0.06	-0.04	0.37	0.37	0.39	0.45	0.29
smap-l3-rss-v4-1m	3428541	-0.05	-0.02	0.40	0.40	0.36	0.44	0.27
smap-l2-jpl-v5.0	2406258	0.07	0.06	0.69	0.69	0.74	0.17	0.55
smap-l3-jpl-v5.0-8dr	3419493	0.06	0.08	0.36	0.37	0.41	0.45	0.31
smap-l3-jpl-v5.0-1m	3428541	0.08	0.10	0.38	0.40	0.36	0.43	0.27
cci-l4-esa-merged-oi-v2.31-7dr	1400123	0.06	0.10	0.39	0.41	0.33	0.41	0.24
cci-l4-esa-merged-oi-v2.31-30dr	1014314	0.15	0.16	0.32	0.36	0.34	0.52	0.26

► Table 2 is similar to Table 1 but considering only match-up pairs where  $RR=0$  mm/h,  $3 < U_{10} < 12$  m/s,  $SST > 5^\circ\text{C}$ , distance to coast  $> 800$  km.



**Table 2: Statistics of  $\Delta$ SSS (Satellite - Salinity Snake) - C1**

Satellite products	#	Median	Mean	Std	RMS	IQR	$r^2$	Std*
smos-l2-v662	741187	0.12	0.12	0.59	0.61	0.89	0.14	0.68
smos-l3-catds-ifr-v2-1d-05deg	790953	0.31	0.39	0.48	0.61	0.80	0.13	0.56
smos-l3-catds-ifr-v2-1m-025deg	760644	0.41	0.37	0.35	0.51	0.50	0.47	0.37
smos-l3-catds-cpdc-v321-l2q	282121	0.53	0.44	0.59	0.73	0.78	0.21	0.55
smos-l3-catds-cpdc-v317-10d-25km	446331	0.17	0.22	0.30	0.37	0.40	0.66	0.28
smos-l3-catds-cpdc-v317-1m-25km	206946	0.19	0.13	0.30	0.33	0.44	0.69	0.32
smos-l3-catds-locean-v5-9d	1355328	0.13	0.14	0.24	0.27	0.30	0.76	0.22
smos-l3-catds-locean-v5-18d	1355328	0.15	0.13	0.22	0.25	0.27	0.79	0.20
smos-l3-bec-v2-9d	270090	0.54	0.53	0.29	0.60	0.50	0.63	0.39
smos-l3-icdc-v3-1m	651376	0.01	-0.02	0.25	0.25	0.31	0.57	0.23
smos-l4-catds-ifr-v2-1w	209551	0.00	-0.03	0.23	0.24	0.31	0.65	0.21
smap-l2-rss-v4	931518	0.11	0.08	0.43	0.43	0.47	0.44	0.35
smap-l3-rss-v4-8dr	1355328	-0.08	-0.08	0.28	0.29	0.37	0.69	0.28
smap-l3-rss-v4-1m	1355328	-0.07	-0.08	0.30	0.31	0.36	0.73	0.27
smap-l2-jpl-v5.0	1057695	0.09	0.09	0.56	0.57	0.61	0.30	0.45
smap-l3-jpl-v5.0-8dr	1355328	0.03	0.04	0.28	0.28	0.40	0.69	0.30
smap-l3-jpl-v5.0-1m	1355328	0.06	0.04	0.29	0.29	0.35	0.71	0.26
cci-l4-esa-merged-oi-v2.31-7dr	446331	0.07	0.06	0.21	0.22	0.27	0.82	0.20
cci-l4-esa-merged-oi-v2.31-30dr	339150	0.18	0.15	0.26	0.30	0.31	0.75	0.24

- ▶ Numerical values can be downloaded as csv files for [Table 1](#) and [Table 2](#).
- ▶ Figures using numerical values of Table 1 sorted by [MEDIANs](#), [MEANs](#), [IQR](#), [RMS](#), [STD](#), [R2](#) are also provided.
- ▶ Figures using numerical values of Table 2 sorted by [MEDIANs](#), [MEANs](#), [IQR](#), [RMS](#), [STD](#), [R2](#) are also provided.

Caution has to be made in the interpretation of the "ranking" between different satellite products in particular when looking at the dispersion parameters like the standard deviation (STD), or the interquartile range (IQR). Keep in mind that low spatial and/or temporal resolution satellite SSS products tend to have lower dispersions than products at higher resolutions. For example, a level 2 (swath) product of a specific sensor will always have more dispersion than level 3 or 4 products where spatial and temporal averaging tend to reduce the instrumental noise and potential small scale variability. In general, products at  $1^\circ \times 1^\circ$  spatial resolution have lower dispersion than products at  $0.25^\circ \times 0.25^\circ$ . Same result applies for monthly products compared to daily products.

## 5.2 Statistics derived for the different *in situ* databases

- ▶ Table 1 shows the mean, median, standard deviation (Std), root mean square (RMS), interquartile range (IQR), correlation coefficient ( $r^2$ ) and robust standard deviation (Std\*) of the match-up differences  $\Delta$ SSS (Satellite - *in situ*) between **SMOS SSS L3 v5 - 18 Days (CATDS-CECOS-LOCEAN)** and all the available *in situ* datasets derived over the SPURS 2 Pi-MEP region and for the full satellite product period and considering all match-up pairs satellite/*in situ* SSS values to derive the statistics:

**Table 1: Statistics of  $\Delta$ SSS (Satellite - *in situ*)**

<i>in situ</i> database	#	Median	Mean	Std	RMS	IQR	r <sup>2</sup>	Std*
argo	5933	0.01	0.01	0.22	0.22	0.30	0.83	0.22
tsg-gosud-research-vessel	1429	-0.13	-0.13	0.09	0.16	0.12	0.56	0.09
tsg-gosud-sailing-ship	7257	0.18	0.25	0.30	0.39	0.35	0.75	0.23
tsg-samos	38667	-0.08	-0.15	0.47	0.50	0.33	0.30	0.24
drifter	124214	0.08	0.10	0.27	0.29	0.29	0.73	0.22
snake	3428541	0.18	0.20	0.33	0.38	0.28	0.52	0.21
saildrone	9218	0.10	0.13	0.19	0.23	0.22	0.45	0.16
waveglider	642340	0.02	0.04	0.26	0.26	0.32	0.85	0.23
seaglider	73542	0.12	0.12	0.23	0.26	0.29	0.86	0.22

► Table 2 is similar to Table 1 but considering only match-up pairs where RR=0 mm/h,  $3 < U_{10} < 12$  m/s, SST>5°C, distance to coast > 800 km.

**Table 2: Statistics of  $\Delta$ SSS (Satellite - *in situ*)**

<i>in situ</i> database	#	Median	Mean	Std	RMS	IQR	r <sup>2</sup>	Std*
argo	3405	0.00	0.00	0.21	0.21	0.28	0.83	0.21
tsg-gosud-research-vessel	1429	-0.13	-0.13	0.09	0.16	0.12	0.56	0.09
tsg-gosud-sailing-ship	5736	0.12	0.19	0.27	0.33	0.26	0.70	0.19
tsg-samos	22908	-0.01	0.02	0.25	0.26	0.36	0.61	0.26
drifter	66350	0.06	0.06	0.23	0.24	0.28	0.74	0.21
snake	1355328	0.15	0.13	0.22	0.25	0.27	0.79	0.20
saildrone	3495	0.10	0.12	0.17	0.20	0.23	0.61	0.17
waveglider	366182	0.00	0.01	0.22	0.22	0.29	0.88	0.21
seaglider	33071	0.10	0.10	0.21	0.23	0.30	0.89	0.22

► Numerical values can be downloaded as csv files for [Table 1](#) and [Table 2](#).

## References

- Abderrahim Bentamy and Denis Croize Fillon. Gridded surface wind fields from Metop/ASCAT measurements. *Int. J. Remote Sens.*, 33(6):1729–1754, March 2012. ISSN 1366-5901. doi: [10.1080/01431161.2011.600348](https://doi.org/10.1080/01431161.2011.600348).
- Abderrahim Bentamy, Semyon A. Grodsky, James A. Carton, Denis Croizé-Fillon, and Bertrand Chapron. Matching ASCAT and QuikSCAT winds. *J. Geophys. Res.*, 117(C2), February 2012. ISSN 0148-0227. doi: [10.1029/2011JC007479](https://doi.org/10.1029/2011JC007479).
- J. Boutin, J.L. Vergely, S. Marchand, F. D’Amico, A. Hasson, N. Kolodziejczyk, N. Reul, G. Reverdin, and J. Vialard. New SMOS sea surface salinity with reduced systematic errors and improved variability. *Remote Sens. Environ.*, 214:115–134, sep 2018. doi: [10.1016/j.rse.2018.05.022](https://doi.org/10.1016/j.rse.2018.05.022).
- Jacqueline Boutin, Jean-Luc Vergely, C. Thouvenin-Masson, A. Supply, and D. Khvorostyanov. SMOS SSS L3 maps generated by CATDS CEC LOCEAN debias V4.0. SEANOE, 2019. doi: [10.17882/52804](https://doi.org/10.17882/52804).

- Jaqueline Boutin, Y. Chao, W. E. Asher, T. Delcroix, R. Drucker, K. Drushka, N. Kolodziejczyk, T. Lee, N. Reul, G. Reverdin, J. Schanze, A. Soloviev, L. Yu, J. Anderson, L. Brucker, E. Dinnat, A. S. Garcia, W. L. Jones, C. Maes, T. Meissner, W. Tang, N. Vinogradova, and B. Ward. Satellite and In Situ Salinity: Understanding Near-Surface Stratification and Sub-footprint Variability. *Bull. Am. Meteorol. Soc.*, 97(8):1391–1407, 2016. ISSN 1520-0477. doi: [10.1175/bams-d-15-00032.1](https://doi.org/10.1175/bams-d-15-00032.1).
- Clément de Boyer Montégut, Gurvan Madec, A. S. Fischer, A. Lazar, and D. Ludicone. Mixed layer depth over the global ocean: An examination of profile data and a profile-based climatology. *J. Geophys. Res.*, 109(C12), December 2004. doi: [10.1029/2004jc002378](https://doi.org/10.1029/2004jc002378).
- Clément de Boyer Montégut, Juliette Mignot, Alban Lazar, and Sophie Cravatte. Control of salinity on the mixed layer depth in the world ocean: 1. General description. *J. Geophys. Res.*, 112(C6), June 2007. ISSN 0148-0227. doi: [10.1029/2006jc003953](https://doi.org/10.1029/2006jc003953).
- Ralph R. Ferraro. SSM/I derived global rainfall estimates for climatological applications. *J. Geophys. Res.*, 102(D14):16715–16736, 07 1997. doi: [10.1029/97JD01210](https://doi.org/10.1029/97JD01210).
- Ralph R. Ferraro, Fuzhong Weng, Norman C. Grody, and Limin Zhao. Precipitation characteristics over land from the NOAA-15 AMSU sensor. *Geophys. Res. Lett.*, 27(17):2669–2672, 2000. doi: [10.1029/2000GL011665](https://doi.org/10.1029/2000GL011665).
- Fabienne Gaillard, E. Autret, V. Thierry, P. Galaup, C. Coatanoan, and T. Loubrieu. Quality Control of Large Argo Datasets. *J. Atmos. Oceanic Technol.*, 26(2):337–351, 2009. doi: [10.1175/2008JTECHO552.1](https://doi.org/10.1175/2008JTECHO552.1).
- Fabienne Gaillard, Thierry Reynaud, Virginie Thierry, Nicolas Kolodziejczyk, and Karina von Schuckmann. In Situ-Based Reanalysis of the Global Ocean Temperature and Salinity with ISAS: Variability of the Heat Content and Steric Height. *J. Clim.*, 29(4):1305–1323, February 2016. ISSN 1520-0442. doi: [10.1175/jcli-d-15-0028.1](https://doi.org/10.1175/jcli-d-15-0028.1).
- Robert J. Joyce, John E. Janowiak, Phillip A. Arkin, and Pingping Xie. CMORPH: A Method that Produces Global Precipitation Estimates from Passive Microwave and Infrared Data at High Spatial and Temporal Resolution. *J. Hydrometeorol.*, 5(3):487–503, June 2004. doi: [10.1175/1525-7541\(2004\)005\(0487:camtpg\)2.0.co;2](https://doi.org/10.1175/1525-7541(2004)005(0487:camtpg)2.0.co;2).
- Nicolas Kolodziejczyk, Gilles Reverdin, and Alban Lazar. Interannual Variability of the Mixed Layer Winter Convection and Spice Injection in the Eastern Subtropical North Atlantic. *J. Phys. Oceanogr.*, 45(2):504–525, Feb 2015. ISSN 1520-0485. doi: [10.1175/jpo-d-14-0042.1](https://doi.org/10.1175/jpo-d-14-0042.1).
- Christian Kummerow, Y. Hong, W. S. Olson, S. Yang, R. F. Adler, J. McCollum, R. Ferraro, G. Petty, D-B. Shin, and T. T. Wilheit. The Evolution of the Goddard Profiling Algorithm (GPROF) for Rainfall Estimation from Passive Microwave Sensors. *J. Appl. Meteorol.*, 40(11):1801–1820, 2001. doi: [10.1175/1520-0450\(2001\)040\(1801:TEOTGP\)2.0.CO;2](https://doi.org/10.1175/1520-0450(2001)040(1801:TEOTGP)2.0.CO;2).