



# Match-up database Analyses Report

SMOS-L3-CATDS-CECOS-LOCEAN-V2-  
9DAYS-25KM

Argo

Southern Ocean

*prepared by the Pi-MEP Consortium*

May 16, 2018

# Contents

<b>1 Overview</b>	<b>3</b>
<b>2 The MDB file datasets</b>	<b>4</b>
2.1 Satellite SSS product . . . . .	4
2.1.1 SMOS-L3-CATDS-CECOS-LOCEAN-V2-9DAYS-25KM . . . . .	4
2.2 In situ SSS dataset . . . . .	4
2.2.1 Argo . . . . .	4
2.3 Auxiliary geophysical datasets . . . . .	5
2.3.1 CMORPH . . . . .	5
2.3.2 ASCAT . . . . .	6
2.3.3 ISAS . . . . .	6
2.3.4 World Ocean Atlas Climatology . . . . .	7
2.4 Overview of the Match-ups generation method . . . . .	7
2.4.1 In Situ/Satellite data filtering . . . . .	7
2.4.2 In Situ/Satellite Co-localization . . . . .	7
2.4.3 MDB pair Co-localization with auxiliary data and complementary information . . . . .	8
2.4.4 Content of the Match-Up NetCDF files . . . . .	9
2.5 MDB characteristics for the particular in situ/satellite pairs . . . . .	14
2.5.1 Number of paired SSS data as a function of time and distance to coast . . . . .	14
2.5.2 Histograms of the SSS match-ups . . . . .	14
2.5.3 Distribution in situ SSS depth in match-ups pairs . . . . .	15
2.5.4 Spatial Distribution of Match-ups . . . . .	16
2.5.5 Histograms of the spatial and temporal lags of the match-ups pairs . . . . .	17
<b>3 MDB file Analyses</b>	<b>17</b>
3.1 Spatial Maps of the Temporal mean and STD of in situ and satellite SSS and of the difference ( $\Delta$ SSS) . . . . .	17
3.2 Time series of the monthly averaged mean and STD of in situ and satellite SSS and of the ( $\Delta$ SSS) . . . . .	19
3.3 Zonally-averaged Time-mean and temporal STD of in situ and satellite SSS and of the $\Delta$ SSS . . . . .	19
3.4 Scatterplots of satellite vs in situ SSS by latitudinal bands . . . . .	21
3.5 Time series of the monthly averaged mean and STD of the $\Delta$ SSS sorted by latitudinal bands . . . . .	22
3.6 $\Delta$ SSS sorted as function of geophysical conditions . . . . .	22
<b>4 Summary</b>	<b>25</b>

## Acronym

Aquarius	NASA/CONAE Salinity mission
ASCAT	Advanced Scatterometer
ATBD	Algorithm Theoretical Baseline Document
BLT	Barrier Layer Thickness
CMORPH	CPC MORPHing technique
CTD	Instrument used to measure the conductivity, temperature, and pressure of seawater
DM	Delayed Mode
EO	Earth Observation
ESA	European Space Agency
FTP	File Transfer Protocol
GOSUD	Global Ocean Surface Underway Data
GT MBA	The Global Tropical Moored Buoy Array
Ifremer	Institut français de recherche pour l'exploitation de la mer
IPEV	Institut polaire français Paul-Émile Victor
IQR	Interquartile range
ISAS	In Situ Analysis System
L2	Level 2
LEGOS	Laboratoire d'Etudes en Géophysique et Océanographie Spatiales
LOCEAN	Laboratoire d'Océanographie et du Climat : Expérimentations et Approches Numériques
LOPS	Laboratoire d'Océanographie Physique et Spatiale
MDB	Match-up database
MEOP	Marine Mammals Exploring the Oceans Pole to Pole
MLD	Mixed Layer Depth
NRT	Near Real Time
Pi-MEP	Pilot Mission Exploitation Platform
PIRATA	Prediction and Researched Moored Array in the Atlantic
QC	Quality control
$R_{sat}$	Spatial resolution of the satellite SSS product
RAMA	Research Moored Array for African-Asian-Australian Monsoon Analysis and Prediction
RR	Rain rate
SAMOS	Shipboard Automated Meteorological and Oceanographic System
SMAP	Soil Moisture Active Passive (NASA mission)
SMOS	Soil Moisture and Ocean Salinity (ESA mission)
SSS	Sea Surface Salinity
$SSS_{in situ}$	In situ SSS data considered for the match-up
$SSS_{SAT}$	Satellite SSS product considered for the match-up
$\Delta SSS$	Difference between satellite and in situ SSS at colocalized point ( $\Delta SSS = SSS_{SAT} - SSS_{in situ}$ )
SST	Sea Surface Temperature
STD	Standard deviation
Survostral	SURVeillance de l'Océan AuSTRAL (Monitoring the Southern Ocean)
TAO	Tropical Atmosphere Ocean
TSG	Thermosalinograph

# 1 Overview

In this report, we present systematic analyses of the Match-up DataBase (MDB) files generated by the Pi-MEP platform within the following Pi-MEP region and for the below pair of Satellite/In situ SSS data:

- Pi-MEP region: Southern Ocean
- SSS satellite product ( $SSS_{SAT}$ ): SMOS-L3-CATDS-CECOS-LOCEAN-V2-9DAYS-25KM
- In situ dataset ( $SSS_{In situ}$ ):Argo

In the following,  $\Delta SSS = SSS_{SAT} - SSS_{In situ}$  denotes the difference between the satellite and in situ SSS at the colocalized points that form the MDB.

This report presents successively:

The MDB file DataSets (Section 2)

- A short description of the satellite SSS product considered in the match-up (2.1)
- A short description of the In situ SSS dataset considered in the match-up (2.2)
- A short description of the auxiliary geophysical datasets co-localized with SSS pairs (2.3)
- An overview of how the Match-ups were evaluated (2.4)
- An overview of the MDB characteristics for the particular in situ/satellite pairs (2.5)

The major results of the MDB file Analyses (Section 3)

- Spatial Maps of the Time-mean and temporal STD of in situ and satellite SSS and of the  $\Delta SSS$  (3.1)
- Time series of the monthly averaged mean and STD of in situ and satellite SSS and of the  $\Delta SSS$  (3.2)
- Zonally-averaged Time-mean and temporal STD of in situ and satellite SSS and of the  $\Delta SSS$  (3.3)
- Scatterplots of satellite vs in situ SSS by latitudinal bands (3.4)
- Time series of the monthly averaged mean and STD of the  $\Delta SSS$  sorted by latitudinal bands (3.5)
- $\Delta SSS$  sorted as function of geophysical conditions (3.6)

All analyses are conducted over the Pi-MEP Region specified above and over the full satellite SSS product period.

## 2 The MDB file datasets

### 2.1 Satellite SSS product

#### 2.1.1 SMOS-L3-CATDS-CECOS-LOCEAN-V2-9DAYS-25KM

In order to propose improved methodologies to be implemented in future CATDS-CPDC versions, LOCEAN/IPSL (UMR CNRS/UPMC/IRD/MNHN) and ACRI-st have derived a methodology for correcting systematic SSS biases. The v2 release uses an improved debiasing technique that is also implemented in the CATDS CPDC processing; only maps generation (filtering and smoothing) and geographical coverage differ from CATDS CPDC version. Because the ice edge varies from one month to the other, SSS biases are not stable at high latitude: hence no bias correction is applied north of 45°N and south of 47°S. Users must be very cautious poleward of these regions. The version v2 was released in May 2017.

Maps are provided every 4 days from 01/2010 to 12/2016 and are derived from a combination of ascending and descending orbits. Debaised SSS are temporally averaged using a slipping Gaussian kernel with a full width at half maximum of 9 days (9 day product). Maps are at a spatial resolution 25x25km2 and a median filtering over nearest neighbors is applied.

The **L3 DEBIAS LOCEAN v2** Sea Surface Salinity product (Boutin et al. (2017)) have been produced by LOCEAN/IPSL (UMR CNRS/UPMC/IRD/MNHN) laboratory and ACRI-st company and is distributed by the Ocean Salinity Expertise Center (CECOS) of the CNES-IFREMER Centre Aval de Traitement des Donnees SMOS (CATDS), at IFREMER, Plouzane (France).

Table 1: Satellite SSS product characteristics

SMOS-L3-CATDS-CECOS-LOCEAN-V2-9DAYS-25KM	
Spatial resolution	25 km
Temporal resolution	9 days (file every 4 days)
Temporal coverage	From 2010-01-16 to 2016-12-26
Data Provider	CATDS
Release Date	2017-May
Version	2
DOI	<a href="http://doi.org/10.17882/52804#54823">http://doi.org/10.17882/52804#54823</a>
DOC	Doc L3 DEBIAS LOCEAN v2

### 2.2 In situ SSS dataset

#### 2.2.1 Argo

Argo is a global array of 3,000 free-drifting profiling floats that measures the temperature and salinity of the upper 2000 m of the ocean. This allows, for the first time, continuous monitoring of the temperature and salinity of the upper ocean, with all data being relayed and made publicly available within hours after collection. The array provides around 100,000 temperature/salinity profiles per year distributed over the global oceans at an average of 3-degree spacing. Only Argo salinity and temperature float data with quality index set to 1 or 2 are kept. Argo floats appearing in the **grey list** are discarded and, real time (RT), real time adjusted (RTA) and delayed mode (DM) are considered for the test period of the Pi-MEP. The upper ocean salinity and temperature values recorded between 0m and 10m depth are considered as Argo sea surface

salinities (SSS) and sea surface temperatures (SST). These data were collected and made freely available by the international Argo project and the national programs that contribute to it (Argo (2000)).

## 2.3 Auxiliary geophysical datasets

Additional EO datasets are used to characterize the geophysical conditions at the in situ/satellite SSS pair measurement locations and time, and 10 days prior the measurements to get an estimate of the geophysical condition and history. As discussed in Boutin et al. (2016), the presence of vertical gradients in, and horizontal variability of, sea surface salinity indeed complicates comparison of satellite and in situ measurements. The additional EO data are used here to get a first estimates of conditions for which L-band satellite SSS measured in the first centimeters of the upper ocean within a 50-150 km diameter footprint might differ from pointwise in situ measurements performed in general between 10 and 5 m depth below the surface. The spatio-temporal variability of SSS within a satellite footprint (50–150 km) is a major issue for satellite SSS validation in the vicinity of river plumes, frontal zones, and significant precipitation. Rainfall can in some cases produce vertical salinity gradients exceeding 1 pss m<sup>-1</sup>; consequently, it is recommended that satellite and in situ SSS measurements less than 3–6 h after rain events should be considered with care when used in satellite calibration/validation analyses. To identify such situation, the Pi-MEP test platform is first using CMORPH products to characterize the local value and history of rain rate and ASCAT gridded data are used to characterize the local surface wind speed and history.

### 2.3.1 CMORPH

Precipitation are estimated using the CMORPH 3-hourly products at 1/4° resolution (Joyce et al. (2004)). CMORPH (CPC MORPHing technique) produces global precipitation analyses at very high spatial and temporal resolution. This technique uses precipitation estimates that have been derived from low orbiter satellite microwave observations exclusively, and whose features are transported via spatial propagation information that is obtained entirely from geostationary satellite IR data. At present NOAA incorporate precipitation estimates derived from the passive microwaves aboard the DMSP 13, 14 and 15 (SSM/I), the NOAA-15, 16, 17 and 18 (AMSU-B), and AMSR-E and TMI aboard NASA's Aqua, TRMM and GPM spacecraft, respectively. These estimates are generated by algorithms of Ferraro (1997) for SSM/I, Ferraro et al. (2000) for AMSU-B and Kummerow et al. (2001) for TMI. Note that this technique is not a precipitation estimation algorithm but a means by which estimates from existing microwave rainfall algorithms can be combined. Therefore, this method is extremely flexible such that any precipitation estimates from any microwave satellite source can be incorporated.

With regard to spatial resolution, although the precipitation estimates are available on a grid with a spacing of 8 km (at the equator), the resolution of the individual satellite-derived estimates is coarser than that - more on the order of 12 x 15 km or so. The finer "resolution" is obtained via interpolation.

In effect, IR data are used as a means to transport the microwave-derived precipitation features during periods when microwave data are not available at a location. Propagation vector matrices are produced by computing spatial lag correlations on successive images of geostationary satellite IR which are then used to propagate the microwave derived precipitation estimates. This process governs the movement of the precipitation features only. At a given location, the shape and intensity of the precipitation features in the intervening half hour periods between microwave scans are determined by performing a time-weighting interpolation between microwave-derived

features that have been propagated forward in time from the previous microwave observation and those that have been propagated backward in time from the following microwave scan. NOAA refer to this latter step as "morphing" of the features.

For the present Pi-MEP products, we only considered the 3-hourly products at 1/4 degree resolution. The entire CMORPH record (December 2002-present) for 3-hourly, 1/4 degree lat/lon resolution can be found at: [ftp://ftp.cpc.ncep.noaa.gov/precip/CMORPH\\_V1.0/RAW/](ftp://ftp.cpc.ncep.noaa.gov/precip/CMORPH_V1.0/RAW/). CMORPH estimates cover a global belt (-180°W to 180°E) extending from 60°S to 60°N latitude and are available for the complete period of the Pi-MEP core datasets (Jan 2010-now).

### 2.3.2 ASCAT

Advanced SCATterometer (ASCAT) daily data produced and made available at Ifremer/CERSAT on a 0.25°x0.25° resolution grid (Bentamy and Fillon (2012)) since November 2008 are used to characterize the mean daily wind at the match-up pair location as well as the wind history during the 10-days period preceding the in situ measurement date. These wind fields are calculated based on a geostatistical method with external drift. Remotely sensed data from ASCAT are considered as observations while those from numerical model analysis (ECMWF) are associated with the external drift. The spatial and temporal structure functions for wind speed, zonal and meridional wind components are estimated from ASCAT retrievals. Furthermore, the new procedure includes a temporal interpolation of the retrievals based on the complex empirical orthogonal function (CEOF) approach, in order to enhance the sampling length of the scatterometer observations. The resulting daily wind fields involves the main known surface wind patterns as well as some variation modes associated with temporal and spatial moving features. The accuracy of the gridded winds was investigated through comparisons with moored buoy data in Bentamy et al. (2012) and resulted in rms differences for wind speed and direction are about 1.50 m.s<sup>-1</sup> and 20°.

### 2.3.3 ISAS

The In Situ Analysis System (ISAS), as described in Gaillard et al. (2016) is a data based re-analysis of temperature and salinity fields over the global ocean. It was initially designed to synthesize the temperature and salinity profiles collected by the ARGO program. It has been later extended to accommodate all type of vertical profile as well as time series. ISAS gridded fields are entirely based on in-situ measurements. The methodology and configuration have been conceived to preserve as much as possible the data information content and resolution. ISAS is developed and run in a research laboratory (LOPS) in close collaboration with Coriolis, one of ARGO Global Data Assembly Center and unique data provider for the Mercator operational oceanography system. At the moment the period covered starts in 2002 and only the upper 2000m are considered. The gridded fields were produced over the global ocean 70°N–70°S on a 1/2° grid by the ISAS project with datasets downloaded from the Coriolis data center (for more details on ISAS see Gaillard et al. (2009)). In the PiMEP, the product in used is the [INSITU\\_GLO\\_TS\\_OA\\_NRT\\_OBSERVATIONS\\_013\\_002\\_a](#) v6.2 NRT derived at the Coriolis data center and provided by Copernicus ([www.marine.copernicus.eu/documents/PUM/CMEMS-INS-PUM-013-002-ab.pdf](http://www.marine.copernicus.eu/documents/PUM/CMEMS-INS-PUM-013-002-ab.pdf)). The major contribution to the data set is from Argo array of profiling floats, reaching an approximate resolution of one profile every 10-days and every 3-degrees over the Satellite SSS period (<http://www.ums-rops.fr/SNO-Argo/Products/ISAS-T-S-fields/>); in this version SSS from thermosalinographs from ship of opportunity are not used, so that we can consider SMOS SSS validation using ship of opportunity measurements independent of ISAS. The ISAS optimal interpolation involves a structure function modeled as the sum of two Gaussian functions, each associated with specific time and space scales, resulting in a smoothing over

typically 3 degrees. The smallest scale which can be retrieved with ISAS analysis is not smaller than 300–500 km (Kolodziejczyk et al. (2015)). For validation purpose, the ISAS monthly SSS fields at depth level 5 m are collocated and compared with the satellite SSS products and included in the PiMEP MDB files. In addition, the « percentage of variance » fields (PCTVAR) contained in the ISAS analyses provide information on the local variability of in situ SSS measurements within  $1/2^\circ \times 1/2^\circ$  boxes.

#### 2.3.4 World Ocean Atlas Climatology

The World Ocean Atlas 2013 version 2 (WOA13 V2) is a set of objectively analyzed ( $1^\circ$  grid) climatological fields of in situ temperature, salinity and other variables provided at standard depth levels for annual, seasonal, and monthly compositing periods for the World Ocean. It also includes associated statistical fields of observed oceanographic profile data interpolated to standard depth levels on  $5^\circ$ ,  $1^\circ$ , and  $0.25^\circ$  grids. We use these fields in complement to ISAS to characterize the climatological fields (monthly mean and std) at the match-up pairs location and date.

### 2.4 Overview of the Match-ups generation method

The match-up production is basically a three steps process:

1. preparation of the input in situ and satellite data, and,
2. co-localization of satellite products with in situ SSS measurements.
3. co-localization of the in situ/satellite pair with auxiliary information.

In the following, we successively detail the approaches taken for these different steps.

#### 2.4.1 In Situ/Satellite data filtering

The first step consist in filtering Argoin situ dataset using the quality flags as described in 2.2 so that only valid salinity data remains in the produced match-ups.

For high-spatial resolution in situ SSS measurements such as the Thermo-SalinoGraph (TSG) SSS data from research vessels, Voluntary Observing Ships (VOS) or sailing ships, as well as SSS data from surface drifters, an additional spatial-filtering step is performed on the in situ data that will be in fine compared to the satellite SSS products. If  $R_{sat}$  is the spatial resolution of the satellite SSS product (L2 to L3-L4), we keep the in situ data at the original spatial resolution but we also estimate for all spatio-temporal samples a running median filtered SSS applied to all neighbouring in situ SSS data acquired within a distance of  $R_{sat}/2$  from a given in situ acquisition. Both the original and the filtered data are finally stored in the MDB files.

Only for satellite L2 SSS data, a third step consist in filtering spurious data using the flags and associated recommendation as provided by the official data centers and described in 2.1.

#### 2.4.2 In Situ/Satellite Co-localization

In this step, each SSS satellite acquisition is co-localized with the filtered in situ measurements. The method used for co-localization differ if the satellite SSS is a swath product (so-called Level 2-types) or a time-space composite product (so-called Level 3/level 4-types).



- For L2 SSS swath data :

If  $R_{sat}$  is the spatial resolution of the satellite swath SSS product, for each in situ data sample collected in the Pi-MEP database, the platform searches for all satellite SSS data found at grid nodes located within a radius of  $R_{sat}/2$  from the in situ data location and acquired with a time-lag from the in situ measurement date that is less or equal than  $\pm 6$  hours. If several satellite SSS samples are found to meet these criteria, the final satellite SSS match-up point is selected to be the closest in time from the in situ data measurement date. The final spatial and temporal lags between the in situ and satellite data are stored in the MDB files.

- For L3 and L4 composite SSS products :

If  $R_{sat}$  is the spatial resolution of the composite satellite SSS product and D the period over which the composite product was built (e.g., periods of 1, 7, 8, 9, 10, 18 days, 1 month, etc..) with central time  $t_0$ , for each in situ data sample collected in the Pi-MEP database during period D, the platform searches for all satellite SSS data of the composite product found at grid nodes located within a radius of  $R_{sat}/2$  from the in situ data location. If several satellite SSS product samples are found to meet these criteria, the final satellite SSS match-up point is chosen to be the composite SSS with central time  $t_0$  which is the closest in time from the in situ data measurement date. The final spatial and temporal lags between the in situ and satellite data are stored in the MDB files.

#### 2.4.3 MDB pair Co-localization with auxiliary data and complementary information

MDB data consist of satellite and in-situ SSS pair datasets but also of auxiliary geophysical parameters such as local and history of wind speed and rain rates, as well as various information (climatology, distance to coast, mixed layer depth, barrier layer thickness, etc) that can be derived from in situ data and which are included in the final match-up files. The collocation of auxiliary parameters and additional information is done for each filtered in-situ SSS measurement contained in the match-up files as follows :

If  $t_{insitu}$  is the time/date at which the in situ measurement is performed, we collect:

- The [ASCAT](#) wind speed product of the same day than  $t_{insitu}$  found at the ASCAT  $1/4^\circ$  grid node with closest distance from the in situ data location and the time series of the ASCAT wind speed at the same node for the 10 days prior the in situ measurement day.
- If the in situ data is located within the  $60^\circ\text{N}$ - $60^\circ\text{S}$  band, we select the [CMORPH](#) 3-hourly product the closest in time from  $t_{insitu}$  and found at the CMORPH  $1/4^\circ$  grid node with closest distance from the in situ data location. We then store the time series of the CMORPH rain rate at the same node for the 10 days prior the in situ measurement time.

For the given month/year of the in situ data, we select the [ISAS](#) and [WOA](#) fields for the same month (and same year for ISAS fields) and take the SSS analysis (monthly mean, std) found at the grid node the closest from the in situ measurement.

The distance from the in situ SSS data location to the nearest coast is evaluated and provided in kms. We use a distance-to-coast map derived by CLS with a spatial resolution of  $1/16^\circ$  that we re-gridded at  $1/4^\circ$  resolution taking the minimum value of all  $1/16^\circ$  observations found in the  $1/4^\circ$  grid cell.

When vertical profiles of S and T are made available from the in situ measurements used to build the match-up (Argo or sea mammals), the following variables are included into each satellite/in situ match-up file:

1. The vertical distribution of pressure at which the profile were measured,
2. The vertical  $S(z)$  and  $T(z)$  profiles,
3. The vertical potential density anomaly profile  $\sigma_0(z)$ ,
4. The Mixed Layer Depth (MLD). The MLD is defined here as the depth where the potential density has increased from the reference depth (10 meter) by a threshold equivalent to  $0.2^\circ\text{C}$  decrease in temperature at constant salinity:  $\sigma_0 = \sigma_{010m} + \Delta\sigma_0$  with  $\Delta\sigma_0 = \sigma_0(\theta_{10m} - 0.2, S_{10m}) - \sigma_0(\theta_{10m}, S_{10m})$  where  $\theta_{10m}$  and  $S_{10m}$  are the temperature and salinity at the reference depth (i.e. 10 m) (de Boyer Montégut et al. (2004), de Boyer Montégut et al. (2007)).
5. The Top of the Thermocline Depth (TTD) is defined as the depth at which temperature decreases from its 10 m value by  $0.2^\circ\text{C}$ .
6. The Barrier Layer if present, is defined as the intermediate layer between the top of the thermocline and the bottom of the density mixed-layer and its thickness (BLT) is defined as the difference between the MLD and the TTD.
7. The vertical profile of the buoyancy frequency  $N^2(z)$

The resulting match-ups files are serialized as NetCDF-4 files whose structure depends on the origin of the in-situ data they contain.

#### 2.4.4 Content of the Match-Up NetCDF files

```
netcdf pimep-mdb_smos-l3-catds-locean-v2-9d_argo_TIMEID_v01 {
dimensions:
N_prof = 944 ;
N_LEVELS = 499 ;
N_DAYS_WIND = 10 ;
N_3H_RAIN = 80 ;
TIME_Sat = UNLIMITED ; // (1 currently)
variables:
float DATE_ARGO(N_prof) ;
DATE_ARGO:long_name = "Date of Argo profile" ;
DATE_ARGO:units = "days since 1990-01-01 00:00:00" ;
DATE_ARGO:standard_name = "time" ;
DATE_ARGO:FillValue = -999.f ;
float LATITUDE_ARGO(N_prof) ;
LATITUDE_ARGO:long_name = "Latitude of Argo profile" ;
LATITUDE_ARGO:units = "degrees_north" ;
LATITUDE_ARGO:valid_min = -90. ;
LATITUDE_ARGO:valid_max = 90. ;
LATITUDE_ARGO:standard_name = "latitude" ;
LATITUDE_ARGO:FillValue = -999.f ;
float LONGITUDE_ARGO(N_prof) ;
LONGITUDE_ARGO:long_name = "Longitude of Argo profile" ;
LONGITUDE_ARGO:units = "degrees_east" ;
LONGITUDE_ARGO:valid_min = -180. ;
LONGITUDE_ARGO:valid_max = 180. ;
```

```

LONGITUDE_ARGO:standard_name = "longitude" ;
LONGITUDE_ARGO:FillValue = -999.f ;
float SSS_DEPTH_ARGO(N_prof) ;
SSS_DEPTH_ARGO:long_name = "Sea water pressure at Argo float location (equals 0 at sea level)" ;
SSS_DEPTH_ARGO:units = "decibar" ;
SSS_DEPTH_ARGO:standard_name = "sea_water_pressure" ;
SSS_DEPTH_ARGO:FillValue = -999.f ;
float SSS_ARGO(N_prof) ;
SSS_ARGO:long_name = "Argo SSS" ;
SSS_ARGO:units = "1" ;
SSS_ARGO:salinity_scale = "Practical Salinity Scale(PSS-78)" ;
SSS_ARGO:standard_name = "sea_water_salinity" ;
SSS_ARGO:FillValue = -999.f ;
float SST_ARGO(N_prof) ;
SST_ARGO:long_name = "Argo SST" ;
SST_ARGO:units = "degree Celsius" ;
SST_ARGO:standard_name = "sea_water_temperature" ;
SST_ARGO:FillValue = -999.f ;
float DELAYED_MODE_ARGO(N_prof) ;
DELAYED_MODE_ARGO:long_name = "Argo data mode (delayed mode = 1, real time =0) " ;
DELAYED_MODE_ARGO:units = "1" ;
DELAYED_MODE_ARGO:FillValue = -999.f ;
float DISTANCE_TO_COAST_ARGO(N_prof) ;
DISTANCE_TO_COAST_ARGO:long_name = "Distance to coasts at Argo float location" ;
DISTANCE_TO_COAST_ARGO:units = "km" ;
DISTANCE_TO_COAST_ARGO:FillValue = -999.f ;
float PLATFORM_NUMBER_ARGO(N_prof) ;
PLATFORM_NUMBER_ARGO:long_name = "Argo float unique identifier" ;
PLATFORM_NUMBER_ARGO:conventions = "WMO float identifier : A9IIII" ;
PLATFORM_NUMBER_ARGO:units = "1" ;
PLATFORM_NUMBER_ARGO:FillValue = -999.f ;
float PSAL_ARGO(N_prof, N_LEVELS) ;
PSAL_ARGO:long_name = "Argo salinity profile" ;
PSAL_ARGO:units = "1" ;
PSAL_ARGO:salinity_scale = "Practical Salinity Scale (PSS-78)" ;
PSAL_ARGO:standard_name = "sea_water_salinity" ;
PSAL_ARGO:FillValue = -999.f ;
float TEMP_ARGO(N_prof, N_LEVELS) ;
TEMP_ARGO:long_name = "Argo temperature profile" ;
TEMP_ARGO:units = "degree Celsius" ;
TEMP_ARGO:standard_name = "sea_water_temperature" ;
TEMP_ARGO:FillValue = -999.f ;
float PRES_ARGO(N_prof, N_LEVELS) ;
PRES_ARGO:long_name = "Argo pressure profile" ;
PRES_ARGO:units = "decibar" ;
PRES_ARGO:standard_name = "sea_water_pressure" ;
PRES_ARGO:FillValue = -999.f ;
float RHO_ARGO(N_prof, N_LEVELS) ;

```

```

RHO_ARGO:long_name = "Argo in-situ density profile" ;
RHO_ARGO:units = "kg/m" ;
RHO_ARGO:FillValue = -999.f ;
float SIGMA0_ARGO(N_prof, N_LEVELS) ;
SIGMA0_ARGO:long_name = "Argo potential density anomaly profile" ;
SIGMA0_ARGO:units = "kg/m3" ;
SIGMA0_ARGO:FillValue = -999.f ;
float N2_ARGO(N_prof, N_LEVELS) ;
N2_ARGO:long_name = "Argo buoyancy frequency profile" ;
N2_ARGO:units = "1/s2" ;
N2_ARGO:FillValue = -999.f ;
float MLD_ARGO(N_prof) ;
MLD_ARGO:long_name = "Mixed Layer Depth (MLD) calculated from Argo profile (depth
where  $\sigma_0 = \sigma_{010m} + \Delta\sigma_0$  with  $\Delta\sigma_0 = \sigma_0(\theta_{10m} - 0.2, S_{10m}) - \sigma_0(\theta_{10m}, S_{10m})$ )" ;
MLD_ARGO:units = "m" ;
MLD_ARGO:FillValue = -999.f ;
float TTD_ARGO(N_prof) ;
TTD_ARGO:long_name = "Top of Thermocline Depth (TTD) calculated from Argo profile
(depth where  $\theta = \theta_{10m} - 0.2$ )" ;
TTD_ARGO:units = "m" ;
TTD_ARGO:FillValue = -999.f ;
float BLT_ARGO(N_prof) ;
BLT_ARGO:long_name = "Barrier Layer Thickness (TTD-MLD)" ;
BLT_ARGO:units = "m" ;
BLT_ARGO:FillValue = -999.f ;
float DATE_Satellite_product(TIME_Sat) ;
DATE_Satellite_product:long_name = "Central time of satellite SSS file" ;
DATE_Satellite_product:units = "days since 1990-01-01 00:00:00" ;
DATE_Satellite_product:standard_name = "time" ;
float LATITUDE_Satellite_product(N_prof) ;
LATITUDE_Satellite_product:long_name = "Satellite product latitude at Argo float location" ;
LATITUDE_Satellite_product:units = "degrees_north" ;
LATITUDE_Satellite_product:valid_min = -90. ;
LATITUDE_Satellite_product:valid_max = 90. ;
LATITUDE_Satellite_product:standard_name = "latitude" ;
LATITUDE_Satellite_product:FillValue = -999.f ;
float LONGITUDE_Satellite_product(N_prof) ;
LONGITUDE_Satellite_product:long_name = "Satellite product longitude at Argo float loca-
tion" ;
LONGITUDE_Satellite_product:units = "degrees_east" ;
LONGITUDE_Satellite_product:valid_min = -180. ;
LONGITUDE_Satellite_product:valid_max = 180. ;
LONGITUDE_Satellite_product:standard_name = "longitude" ;
LONGITUDE_Satellite_product:FillValue = -999.f ;
float SSS_Satellite_product(N_prof) ;
SSS_Satellite_product:long_name = "Satellite product SSS at Argo float location" ;
SSS_Satellite_product:units = "1" ;
SSS_Satellite_product:salinity_scale = "Practical Salinity Scale(PSS-78)" ;
SSS_Satellite_product:standard_name = "sea_surface_salinity" ;

```

```

SSS_Satellite_product:_FillValue = -999.f ;
float SST_Satellite_product(N_prof) ;
SST_Satellite_product:long_name = "Satellite product SST at Argo float location" ;
SST_Satellite_product:units = "degree Celsius" ;
SST_Satellite_product:standard_name = "sea_surface_temperature" ;
SST_Satellite_product:_FillValue = -999.f ;
float Spatial_lags(N_prof) ;
Spatial_lags:long_name = "Spatial lag between Argo float location and satellite SSS product pixel
center" ;
Spatial_lags:units = "km" ;
Spatial_lags:_FillValue = -999.f ;
float Time_lags(N_prof) ;
Time_lags:long_name = "Temporal lag between Argo float time and satellite SSS product central
time" ;
Time_lags:units = "days" ;
Time_lags:_FillValue = -999.f ;
float ROSSBY_RADIUS_at_ARGO(N_prof) ;
ROSSBY_RADIUS_at_ARGO:long_name = "Baroclinic Rossby radius of deformation (Chelton
et al., 1998) at Argo float location" ;
ROSSBY_RADIUS_at_ARGO:units = "km" ;
ROSSBY_RADIUS_at_ARGO:_FillValue = -999.f ;
float Ascet_daily_wind_at_ARGO(N_prof) ;
Ascet_daily_wind_at_ARGO:long_name = "Daily Ascet wind speed module at Argo float loca-
tion" ;
Ascet_daily_wind_at_ARGO:units = "m/s" ;
Ascet_daily_wind_at_ARGO:_FillValue = -999.f ;
float CMORPH_3h_Rain_Rate_at_ARGO(N_prof) ;
CMORPH_3h_Rain_Rate_at_ARGO:long_name = "3-hourly CMORPH rain rate at Argo float
location" ;
CMORPH_3h_Rain_Rate_at_ARGO:units = "mm/3h" ;
CMORPH_3h_Rain_Rate_at_ARGO:_FillValue = -999.f ;
float Ascet_10_prior_days_wind_at_ARGO(N_prof, N_DAYS_WIND) ;
Ascet_10_prior_days_wind_at_ARGO:long_name = "Prior 10 days time series of Ascet wind speed
module at Argo float location" ;
Ascet_10_prior_days_wind_at_ARGO:units = "m/s" ;
Ascet_10_prior_days_wind_at_ARGO:_FillValue = -999.f ;
float CMORPH_10_prior_days_Rain_Rate_at_ARGO(N_prof, N_3H_RAIN) ;
CMORPH_10_prior_days_Rain_Rate_at_ARGO:long_name = "Prior 10 days times series of 3-
hourly CMORPH Rain Rate at Argo float location" ;
CMORPH_10_prior_days_Rain_Rate_at_ARGO:units = "mm/3h" ;
CMORPH_10_prior_days_Rain_Rate_at_ARGO:_FillValue = -999.f ;
float SSS_ISAS_at_ARGO(N_prof) ;
SSS_ISAS_at_ARGO:long_name = "ISAS SSS (5m depth) at Argo float location" ;
SSS_ISAS_at_ARGO:units = "1" ;
SSS_ISAS_at_ARGO:salinity_scale = "Practical Salinity Scale(PSS-78)" ;
SSS_ISAS_at_ARGO:standard_name = "sea_water_salinity" ;
SSS_ISAS_at_ARGO:_FillValue = -999.f ;
float SSS_PCTVAR_ISAS_at_ARGO(N_prof) ;
SSS_PCTVAR_ISAS_at_ARGO:long_name = "Error on ISAS SSS (5m depth) at Argo float loca-

```

```

tion (% variance)" ;
SSS.PCTVAR_ISAS.at_ARGO:units = "%" ;
SSS.PCTVAR_ISAS.at_ARGO:FillValue = -999.f ;
float SSS.WOA13.at_ARGO(N_prof) ;
SSS.WOA13.at_ARGO:long_name = "WOA 2013 (DECAV-1deg) SSS (0m depth) at Argo float
location" ;
SSS.WOA13.at_ARGO:units = "1" ;
SSS.WOA13.at_ARGO:salinity_scale = "Practical Salinity Scale(PSS-78)" ;
SSS.WOA13.at_ARGO:standard_name = "sea_surface_salinity" ;
SSS.WOA13.at_ARGO:FillValue = -999.f ;
float SSS.STD_WOA13.at_ARGO(N_prof) ;
SSS.STD.WOA13.at_ARGO:long_name = "WOA 2013 (DECAV-1deg) SSS STD (0m depth) at
Argo float location " ;
SSS.STD.WOA13.at_ARGO:units = "1" ;
SSS.STD.WOA13.at_ARGO:FillValue = -999.f ;

// global attributes:
:Conventions = "CF-1.6" ;
:title = "ARGO Match-Up Database" ;
:Satellite_product_name = "SMOS L3 CATDS CECOS LOCEAN V2.1 9DAYS 25KM" ;
:Satellite_product_spatial_resolution = "25 km" ;
:Satellite_product_temporal_resolution = "9 days" ;
:Satellite_product_filename = "v2.1/9days/SMOS.L3_DEBIAS_LOCEAN_AD_20100116_EASE_09d.25km_v00.nc"
;
:Match-Up_spatial_window_radius_in_km = 25. ;
:Match-Up_temporal_window_radius_in_days = 2. ;
:start_time = "20100114T000005Z" ;
:stop_time = "20100118T235026Z" ;
:northernmost_latitude = 77.676f ;
:southernmost_latitude = -66.423f ;
:westernmost_longitude = -179.219f ;
:easternmost_longitude = 179.199f ;
:geospatial_lat_units = "degrees north" ;
:geospatial_lat_resolution = "25 km" ;
:geospatial_lon_units = "degrees east" ;
:geospatial_lon_resolution = "25 km" ;
:institution = "ESA-IFREMER-ODL" ;
:project_name = "SMOS Pilote Mission Exploitation Platfrom (Pi-MEP) for salinity" ;
:project_url = "https://pimep-project.odl.bzh" ;
:license = "Pi-MEP data use is free and open" ;
:product_version = "1.0" ;
:keywords = "Oceans > Ocean Salinity > Sea Surface Salinity" ;
:acknowledgment = "Please acknowledge the use of these data with the following statement:
These data were provided by SMOS Pilote Mission Exploitation Platfrom (Pi-MEP) for salin-
ity" ;
:source = "v2.1/9days/SMOS.L3_DEBIAS_LOCEAN_AD_20100116_EASE_09d.25km_v00.nc" ;
:references = "https://pimep-project.odl.bzh" ;
:history = "Processed on 2018-04-18 using MDB_generator" ;
:date_created = "2018-04-18 17:09:30" ;

```

}

## 2.5 MDB characteristics for the particular in situ/satellite pairs

### 2.5.1 Number of paired SSS data as a function of time and distance to coast

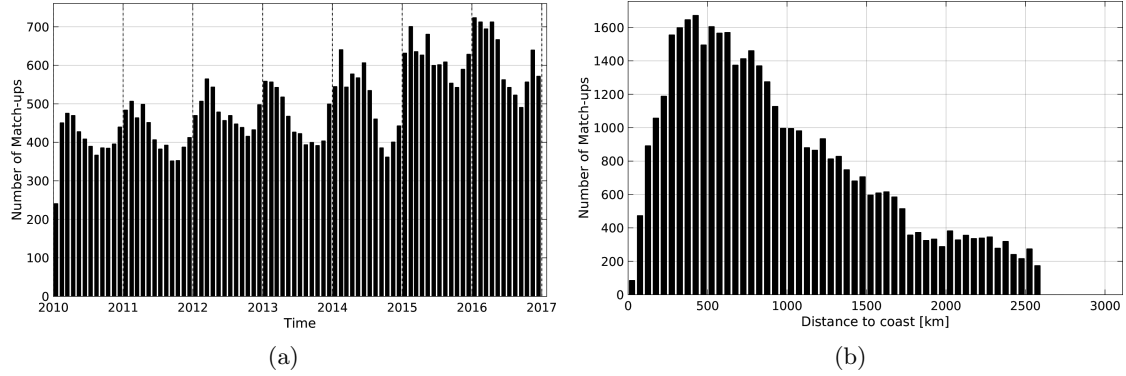


Figure 1: Number of match-ups between Argo and SMOS-L3-CATDS-CECOS-LOCEAN-V2-9DAYS-25KM SSS as a function of time (a) and as function of the distance to coast (b) over the Southern Ocean Pi-MEP region and for the full satellite product period.

### 2.5.2 Histograms of the SSS match-ups

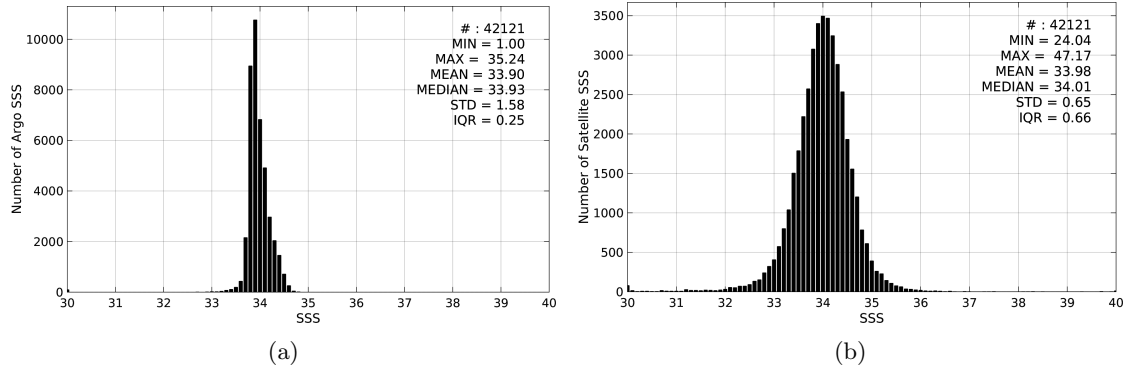


Figure 2: Histograms of SSS from Argo (a) and SMOS-L3-CATDS-CECOS-LOCEAN-V2-9DAYS-25KM (b) considering all match-up pairs per bins of 0.1 over the Southern Ocean Pi-MEP region and for the full satellite product period.

### 2.5.3 Distribution in situ SSS depth in match-ups pairs

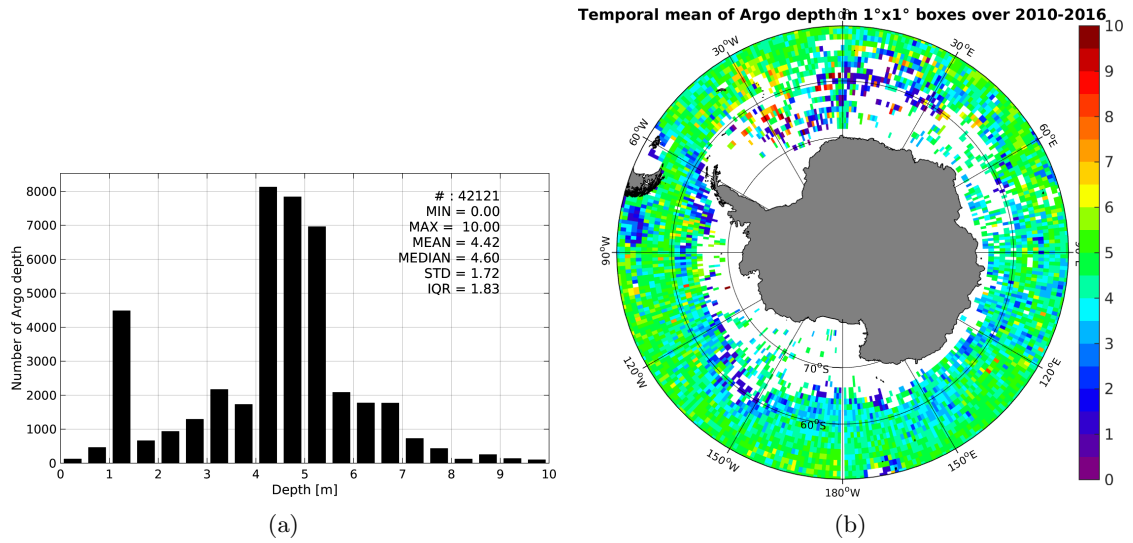


Figure 3: Histograms of the depth of the upper level SSS measurements from Argo in the Match-up DataBase for the Southern Ocean Pi-MEP region (a) and temporal mean spatial distribution of pressure of the in situ SSS data over  $1^\circ \times 1^\circ$  boxes and for the full satellite product period (b).



#### 2.5.4 Spatial Distribution of Match-ups

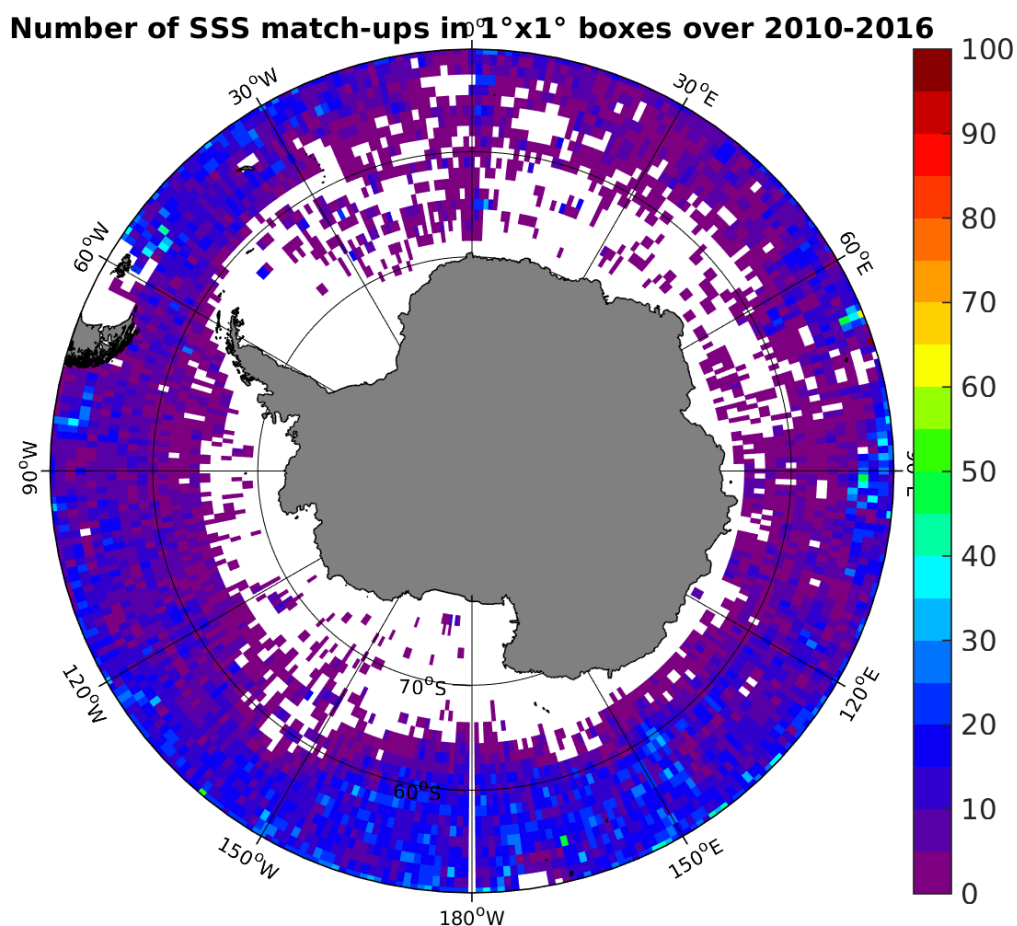


Figure 4: Number of SSS match-ups between Argo SSS and the SMOS-L3-CATDS-CECOS-LOCEAN-V2-9DAYS-25KM SSS product for the Southern Ocean Pi-MEP region over  $1^\circ \times 1^\circ$  boxes and for the full satellite product period.

### 2.5.5 Histograms of the spatial and temporal lags of the match-ups pairs

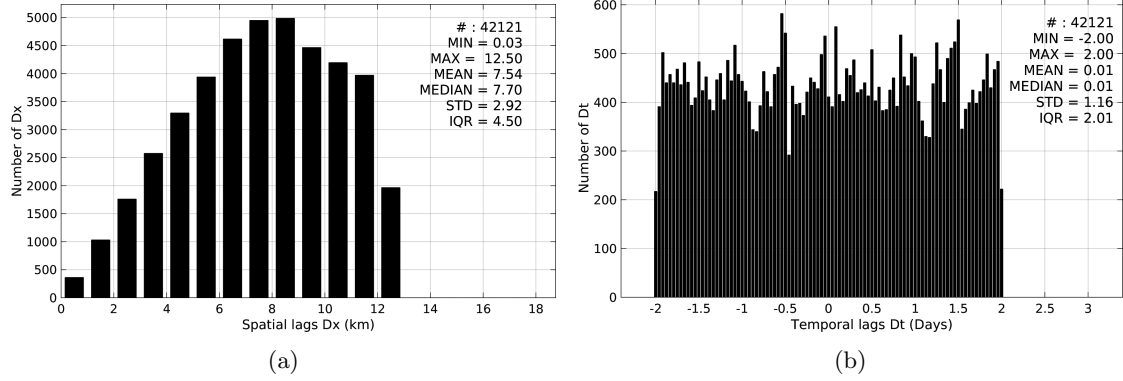


Figure 5: Histograms of the spatial (a) and temporal (b) lags between the time of the Argo measurements and the date of the corresponding SMOS-L3-CATDS-CECOS-LOCEAN-V2-9DAYS-25KM SSS product.

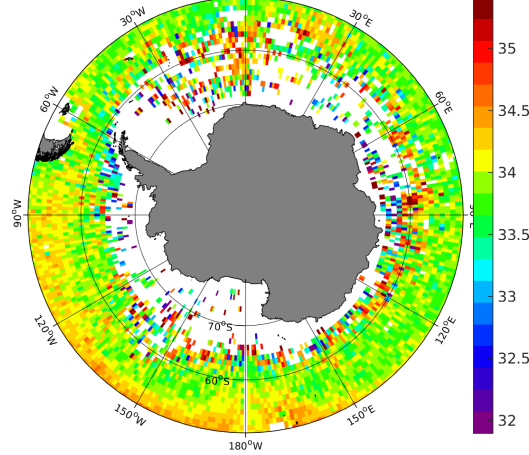
## 3 MDB file Analyses

### 3.1 Spatial Maps of the Temporal mean and STD of in situ and satellite SSS and of the difference ( $\Delta$ SSS)

In Figure 6, we show maps of temporal mean (left) and standard deviation (right) of the SMOS-L3-CATDS-CECOS-LOCEAN-V2-9DAYS-25KM satellite SSS product (top) and of the Argo in situ dataset at the collected Pi-MEP match-up pairs. The temporal mean and std are gridded over the full satellite product period and over spatial boxes of size  $1^\circ \times 1^\circ$ .

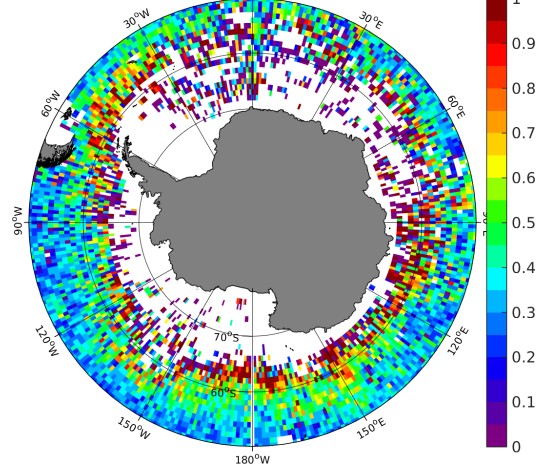
At the bottom of Figure 6, the temporal mean (left) and standard deviation (right) of the differences between the satellite SSS product and in situ data found at match-up pairs, namely  $\Delta$ SSS(Satellite -Argo), is also gridded over the full satellite product period and over spatial boxes of size  $1^\circ \times 1^\circ$ .

Temporal mean of Satellite SSS in  $1^\circ \times 1^\circ$  boxes over 2010-2016



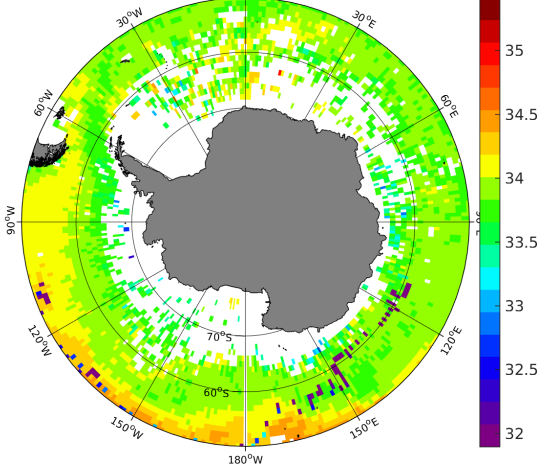
(a) MEAN(Satellite SSS)

Temporal STD of Satellite SSS in  $1^\circ \times 1^\circ$  boxes over 2010-2016



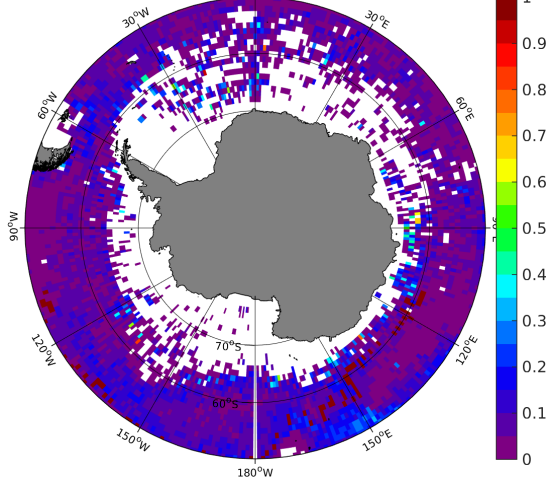
(b) STD(Satellite SSS)

Temporal mean of Argo SSS in  $1^\circ \times 1^\circ$  boxes over 2010-2016



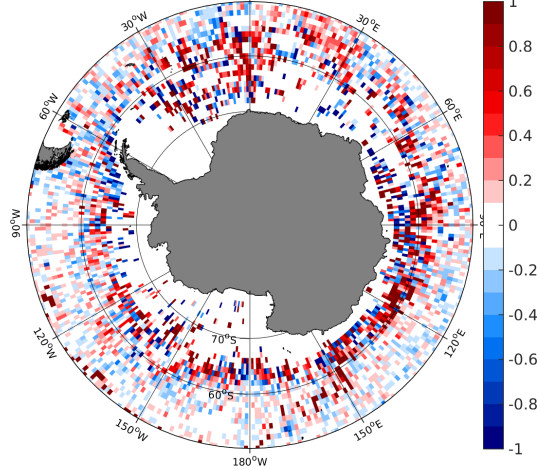
(c) MEAN(Argo SSS)

Temporal STD of Argo SSS in  $1^\circ \times 1^\circ$  boxes over 2010-2016



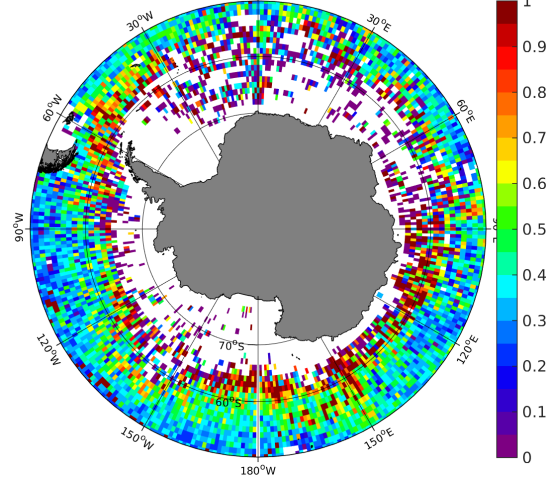
(d) STD(Argo SSS)

Temporal mean of (Sat-Argo) in  $1^\circ \times 1^\circ$  boxes over 2010-2016



(e) MEAN( $\Delta$ SSS) (Satellite - Argo)

Temporal STD of (Sat-Argo) in  $1^\circ \times 1^\circ$  boxes over 2010-2016



(f) STD( $\Delta$ SSS) (Satellite - Argo)

Figure 6: Temporal mean (left) and STD (right) of SSS from SMOS-L3-CATDS-CECOS-LOCEAN-V2-9DAYS-25KM (top), Argo (middle), and of  $\Delta$ SSS (Satellite - Argo). Only match-up pairs are used to generate these maps.

### 3.2 Time series of the monthly averaged mean and STD of in situ and satellite SSS and of the ( $\Delta$ SSS)

In the top panel of Figure 7, we show the time series of the monthly averaged SSS estimated over the full Southern Ocean Pi-MEP region for both SMOS-L3-CATDS-CECOS-LOCEAN-V2-9DAYS-25KM satellite SSS product (in black) and the Argo in situ dataset (in blue) at the collected Pi-MEP match-up pairs.

In the middle panel of Figure 7, we show the time series of the monthly averaged  $\Delta$ SSS (Satellite - Argo) for the collected Pi-MEP match-up pairs and estimated over the full Southern Ocean Pi-MEP region.

In the bottom panel of Figure 7, we show the time series of the monthly averaged standard deviation of the  $\Delta$ SSS (Satellite - Argo) for the collected Pi-MEP match-up pairs and estimated over the full Southern Ocean Pi-MEP region.

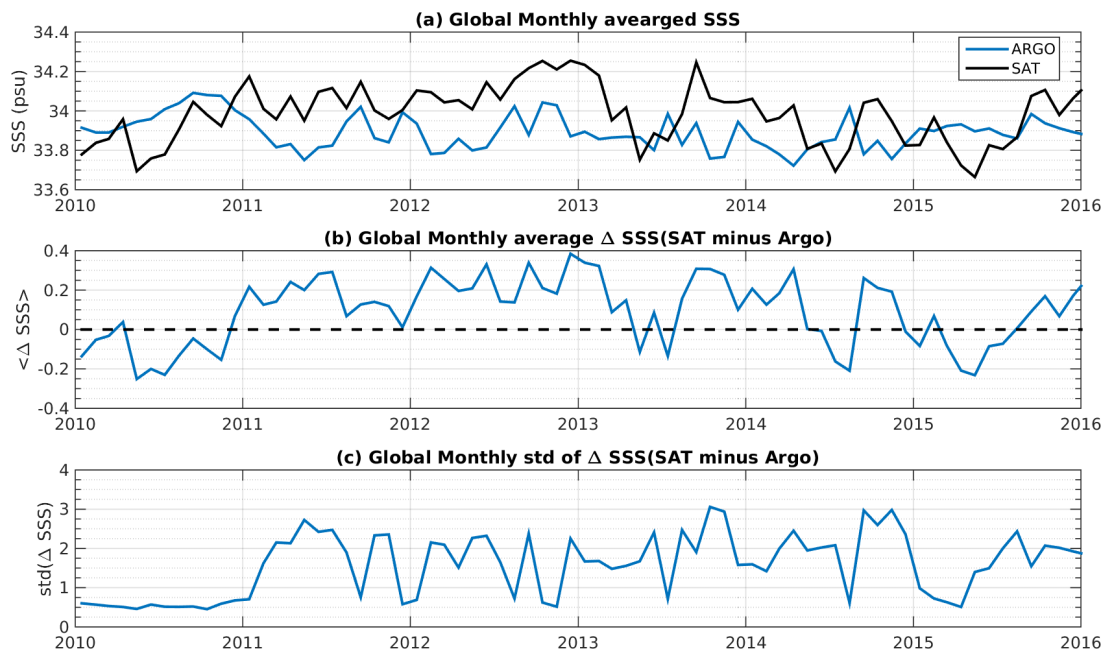


Figure 7: Time series of the monthly averaged mean SSS (top), mean  $\Delta$ SSS (Satellite - Argo) and STD of  $\Delta$ SSS (Satellite - Argo) over the Southern Ocean Pi-MEP region considering all match-ups collected by the Pi-MEP platform.

### 3.3 Zonally-averaged Time-mean and temporal STD of in situ and satellite SSS and of the $\Delta$ SSS

In Figure 8 left panel, we show the zonally averaged time-mean SSS estimated at the collected Pi-MEP match-up pairs for both SMOS-L3-CATDS-CECOS-LOCEAN-V2-9DAYS-25KM satellite SSS product (in black) and the Argo in situ dataset (in blue). The time mean is evaluated over the full satellite SSS product period.

In the right panel of Figure 8, we show the zonally averaged time-mean  $\Delta$ SSS (Satellite - Argo) for all the collected Pi-MEP match-up pairs estimated over the full satellite product period.

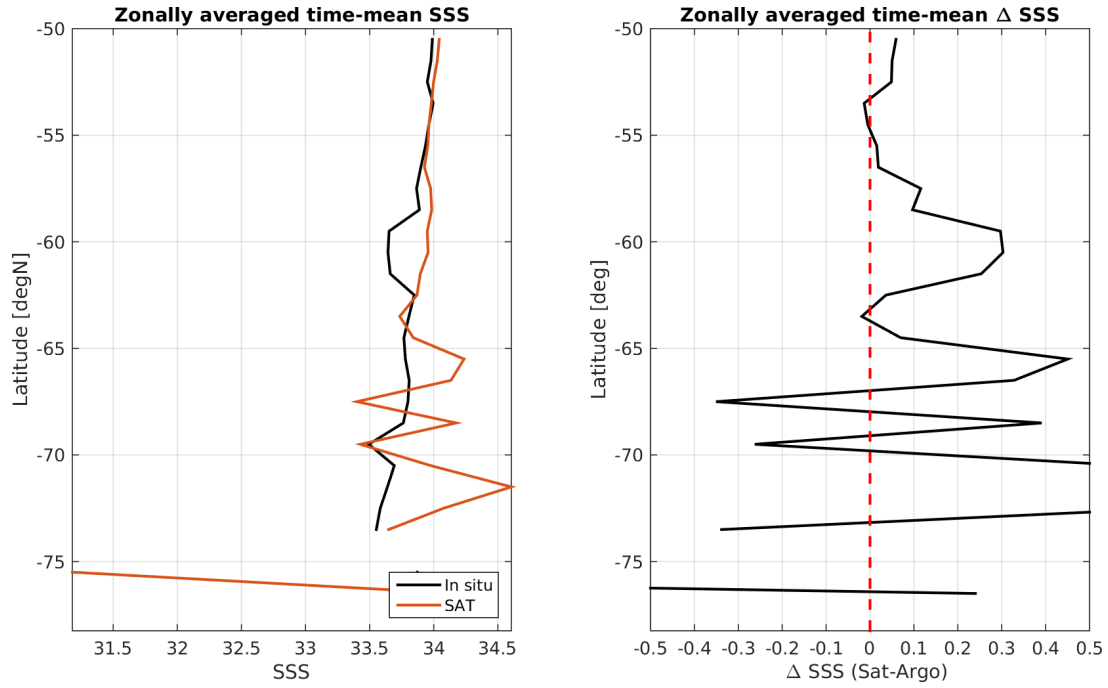


Figure 8: Left panel: Zonally averaged time mean SSS from SMOS-L3-CATDS-CECOS-LOCEAN-V2-9DAYS-25KM (black) and from Argo (blue). Right panel: zonally averaged time-mean  $\Delta$ SSS (Satellite - Argo) for all the collected Pi-MEP match-up pairs estimated over the full satellite product period.

### 3.4 Scatterplots of satellite vs in situ SSS by latitudinal bands

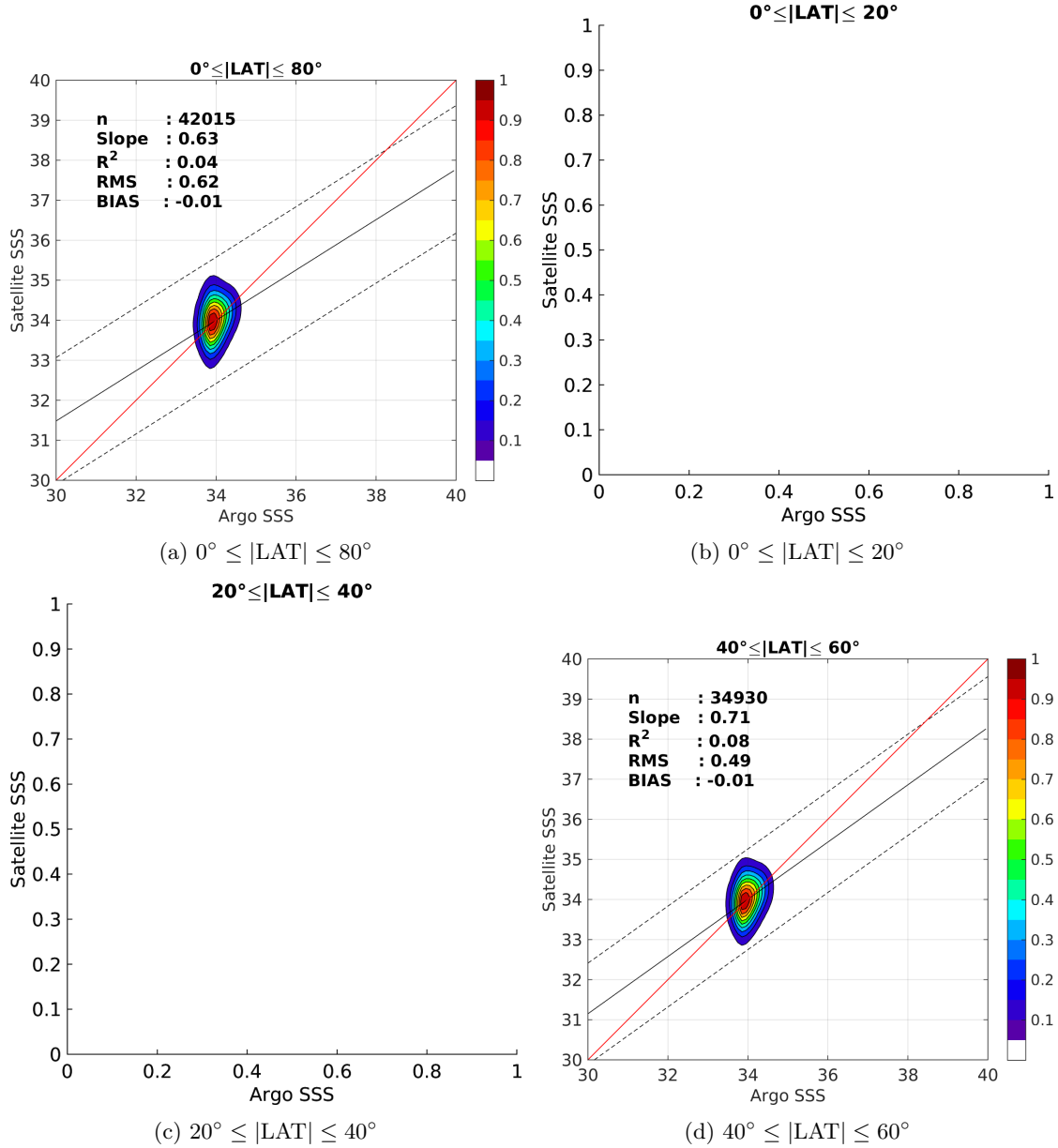


Figure 9: Contour maps of the concentration of SMOS-L3-CATDS-CECOS-LOCEAN-V2-9DAYS-25KM SSS (y-axis) versus Argo SSS (x-axis) at match-up pairs for different latitude bands. For each plot, the red line shows  $x=y$ . The black thin and dashed lines indicate a linear fit through the data cloud and the  $\pm 95\%$  confidence levels, respectively. The number match-up pairs  $n$ , the slope and  $R^2$  coefficient of the linear fit, the root mean square (RMS) and the mean bias between satellite and in situ data are indicated for each latitude band in each plots.

### 3.5 Time series of the monthly averaged mean and STD of the $\Delta SSS$ sorted by latitudinal bands

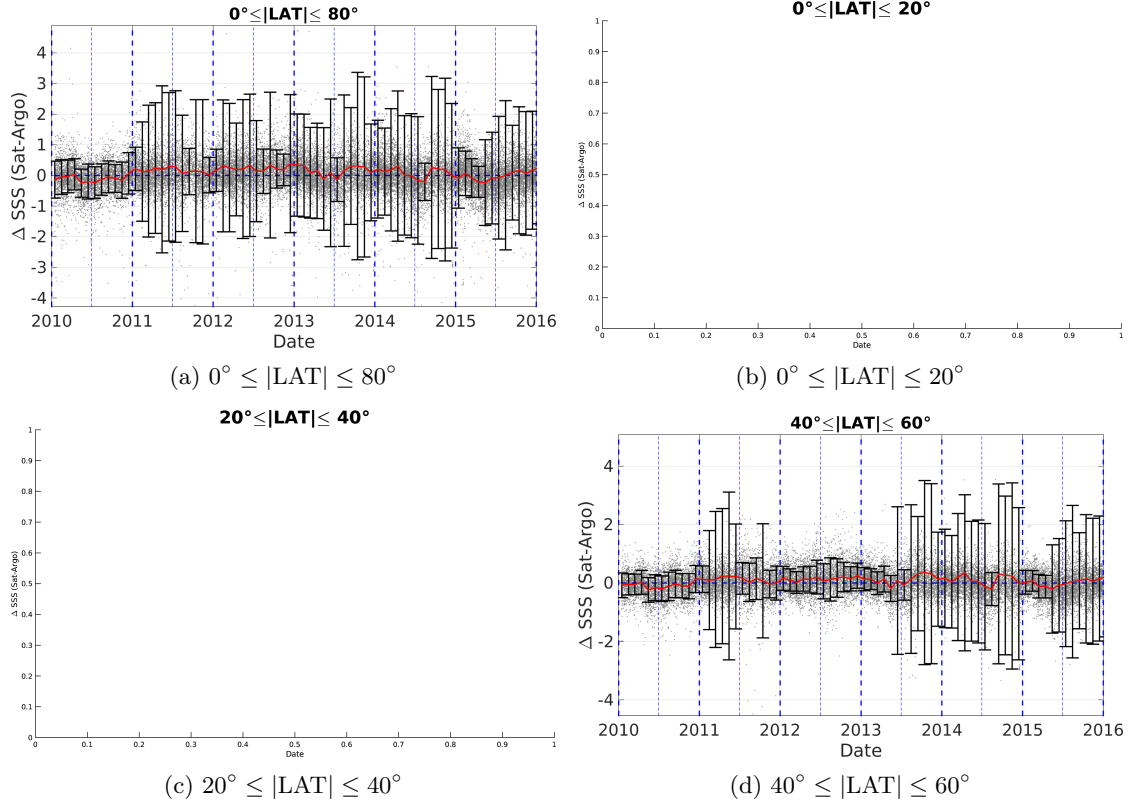


Figure 10: Monthly-average mean (red curves)  $\Delta SSS$  (Satellite - Argo) and  $\pm 1$  STD (black vertical thick bars) as function of time for all the collected Pi-MEP match-up pairs estimated over the Southern Ocean Pi-MEP region and for the full satellite product period are shown for different latitude bands: (a) Latitude band  $80^\circ S-80^\circ N$ , (b) latitude band  $20^\circ S-20^\circ N$ , (c) Mid Latitude bands  $40^\circ S-20^\circ S$  and  $20^\circ N-40^\circ N$  and (d) Latitude bands  $60^\circ S-40^\circ S$  and  $40^\circ N-60^\circ N$ .

### 3.6 $\Delta SSS$ sorted as function of geophysical conditions

In Figure 11, we classify the match-up differences  $\Delta SSS$  (Satellite - in situ) between SMOS-L3-CATDS-CECOS-LOCEAN-V2-9DAYS-25KM and Argo SSS as function of the geophysical conditions at match-up points. The mean and std of  $\Delta SSS$  (Satellite - Argo) is thus evaluated as function of the

- in situ SSS values per bins of width 0.2,
- in situ SST values per bins of width  $1^\circ C$ ,
- ASCAT daily wind values per bins of width 1 m/s,
- CMORPH 3-hourly rain rates per bins of width 1 mm/h, and,
- distance to coasts per bins of width 50 km.



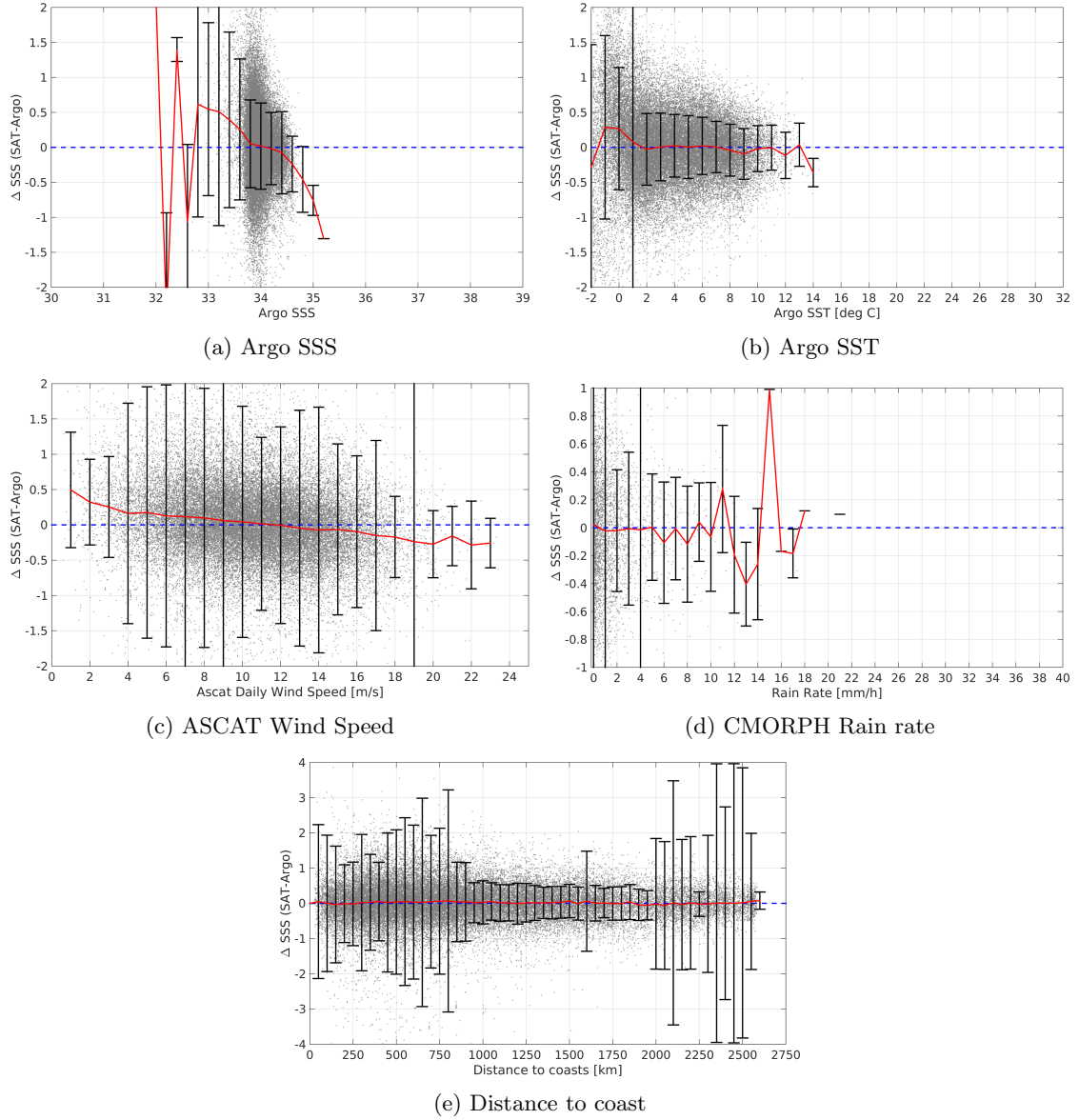


Figure 11:  $\Delta SSS$  (Satellite - Argo) sorted as function of Argo SSS values a), Argo SST b), ASCAT Wind speed c), CMORPH rain rate d) and distance to coast (e). In all plots the mean and STD of  $\Delta SSS$  for each bin is indicated by the red curves and black vertical thick bars ( $\pm 1$  STD)

In Figures 12 and 13, we focus on sub-datasets of the match-up differences  $\Delta SSS$  (Satellite - in situ) between SMOS-L3-CATDS-CECOS-LOCEAN-V2-9DAYS-25KM and Argo for the following specific geophysical conditions:

- **C1:** if the local value at in situ location of estimated rain rate is high (ie.  $> 10$  mm/h) and mean daily wind is low (ie.  $< 5$  m/s).
- **C2:** if the prior 10-days history of the rain and wind at in situ location show high (ie.  $> 5$



mm/h) and low (ie. < 5 m/s) median values, respectively.

- **C3**:if both C1 and C2 are met.
- **C4**:if the mixed layer is shallow with depth <20m.
- **C5**:if there is a barrier layer with thickness > 10 m.
- **C6**:if the in situ data is located where the climatological sss standard deviation is high (ie. above > 0.2).

For each of these conditions, the temporal mean (gridded over spatial boxes of size  $1^\circ \times 1^\circ$ ) and the histogram of the difference  $\Delta SSS$  (Satellite - in situ) are presented.

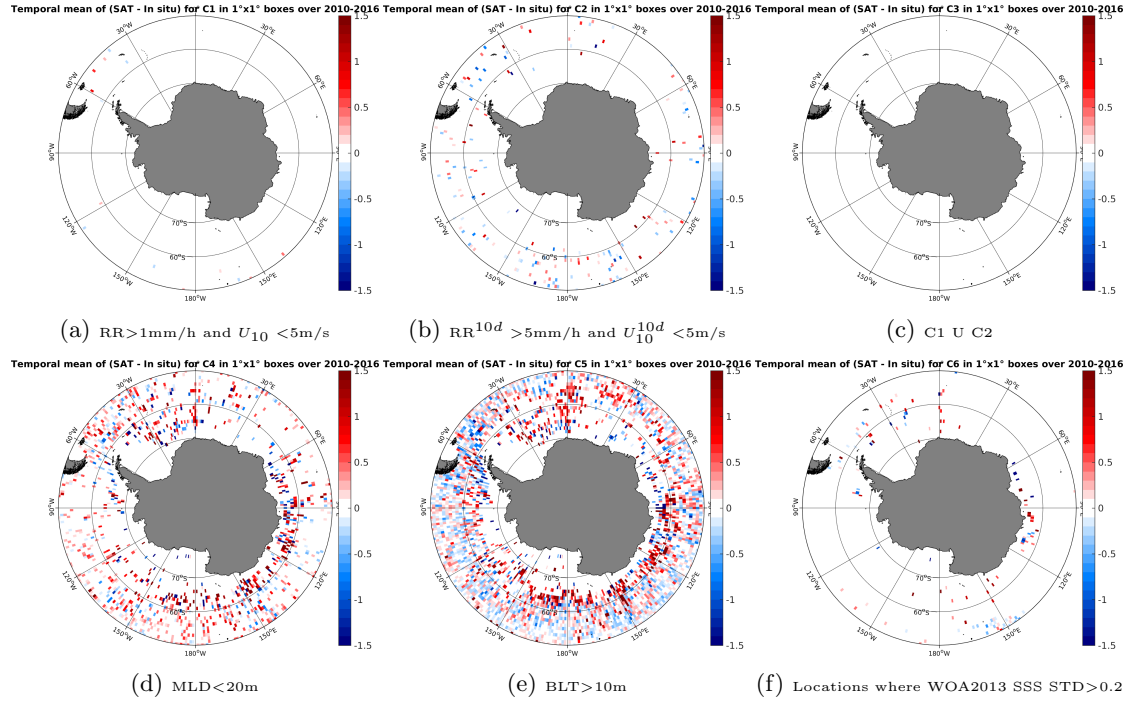


Figure 12: Temporal mean gridded over spatial boxes of size  $1^\circ \times 1^\circ$  of  $\Delta SSS$  (SMOS-L3-CATDS-CECOS-LOCEAN-V2-9DAYS-25KM - Argo) for 6 different subdatasets corresponding to:  $RR > 1\text{mm/h}$  and  $U_{10} < 5\text{m/s}$  (a),  $RR^{10d} > 5\text{mm/h}$  and  $U_{10}^{10d} < 5\text{m/s}$  (b), C1 U C2 (c),  $MLD < 20\text{m}$  (d),  $BLT > 10\text{m}$  (e), Locations where WOA2013 SSS STD > 0.2 (f).

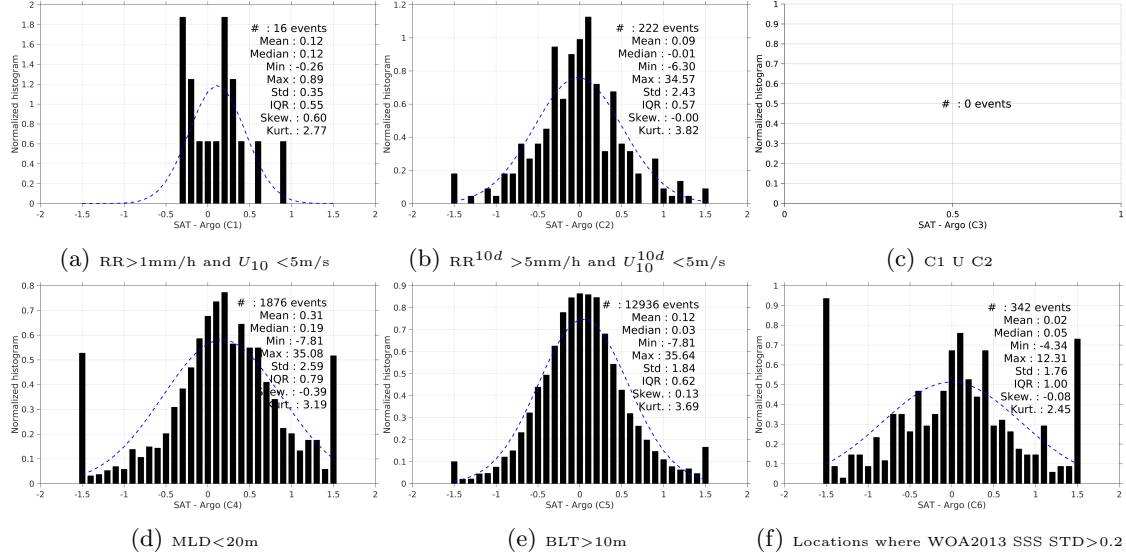


Figure 13: Normalized histogram of  $\Delta SSS$  (SMOS-L3-CATDS-CECOS-LOCEAN-V2-9DAYS-25KM - Argo) for 6 different subdatasets corresponding to: RR>1mm/h and  $U_{10} < 5\text{m/s}$  (a),  $RR^{10d} > 5\text{mm/h}$  and  $U_{10}^{10d} < 5\text{m/s}$  (b), C1 U C2 (c), MLD<20m (d), BLT>10m (e), Locations where WOA2013 SSS STD>0.2 (f).

## 4 Summary

Table 1 presents statistics (mean, median, standard deviation, root mean square and inter-quantile range) of the match-up differences  $\Delta SSS$  (Satellite - in situ) between SMOS-L3-CATDS-CECOS-LOCEAN-V2-9DAYS-25KM and Argo derived over the Southern Ocean Pi-MEP region and for the full satellite product period and for the following conditions:

- all: All the match-up pairs satellite/in situ SSS are used to derive the statistics
- C1: only pairs where  $RR > 1\text{mm/h}$  and  $U_{10} < 5\text{m/s}$
- C2: only pairs where  $RR^{10d} > 5\text{mm/h}$  and  $U_{10}^{10d} < 5\text{m/s}$
- C3: only pairs where C1 U C2
- C4: only pairs where MLD<20m
- C5: only pairs where BLT>10m
- C6: only pairs at Locations where WOA2013 SSS STD>0.2
- C7a: only pairs where distance to coast is < 150 km.
- C7b: only pairs where distance to coast is in the range [150, 800] km.
- C7c: only pairs where distance to coast is > 800 km.
- C8a: only pairs where in situ SST is < 5°C.
- C8b: only pairs where in situ SST is in the range [5, 28]°C.

- C8c: only pairs where in situ SST is  $> 28^{\circ}\text{C}$ .
- C9a: only pairs where in situ SSS is  $< 33$ .
- C9b: only pairs where in situ SSS is in the range  $[33, 37]$ .
- C9c: only pairs where in situ SSS is  $> 37$ .

**Table 1: Statistics of  $\Delta\text{SSS}$  (Satellite - Argo)**

Condition	#	Median	Mean	Std	RMS	IQR
all	42121	0.02	0.09	1.70	1.70	0.61
C1	16	0.12	0.12	0.35	0.36	0.55
C2	222	-0.01	0.09	2.43	2.43	0.57
C3	0	NaN	NaN	NaN	NaN	NaN
C4	1876	0.19	0.31	2.59	2.60	0.79
C5	12936	0.03	0.12	1.84	1.84	0.62
C6	342	0.05	0.02	1.76	1.76	1.00
C7a	1452	0.00	0.14	2.10	2.10	0.54
C7b	19214	0.03	0.11	1.91	1.91	0.68
C7c	21421	0.01	0.06	1.45	1.45	0.57
C8a	26983	0.05	0.15	2.10	2.10	0.71
C8b	15134	-0.02	-0.03	0.39	0.39	0.48
C8c	0	NaN	NaN	NaN	NaN	NaN
C9a	128	32.97	24.59	14.68	28.61	31.15
C9b	41993	0.02	0.01	0.64	0.64	0.61
C9c	0	NaN	NaN	NaN	NaN	NaN

Table 2 presents statistics of  $\Delta\text{SSS}$  (Satellite - Argo) as Table 1 but for Argo delayed mode only.

**Table 2: Statistics of  $\Delta\text{SSS}$  (Satellite - Argo) - Delayed mode**

Condition	#	Median	Mean	Std	RMS	IQR
all	32335	0.03	0.12	1.90	1.90	0.61
C1	12	0.22	0.18	0.37	0.40	0.57
C2	161	-0.04	0.15	2.79	2.79	0.58
C3	0	NaN	NaN	NaN	NaN	NaN
C4	1311	0.19	0.42	3.00	3.02	0.75
C5	10280	0.03	0.15	2.03	2.04	0.61
C6	263	0.09	0.27	1.66	1.68	0.84
C7a	934	0.02	0.21	2.58	2.59	0.57
C7b	13706	0.04	0.16	2.20	2.21	0.68
C7c	17663	0.02	0.08	1.57	1.57	0.56
C8a	19377	0.06	0.21	2.43	2.44	0.72
C8b	12954	-0.01	-0.02	0.39	0.39	0.48
C8c	0	NaN	NaN	NaN	NaN	NaN
C9a	124	33.01	25.38	14.22	29.07	1.96
C9b	32211	0.02	0.02	0.62	0.62	0.60
C9c	0	NaN	NaN	NaN	NaN	NaN

For the same conditions, Table 3 presents statistics of  $\Delta\text{SSS}$  (Satellite - ISAS). Only ISAS SSS values with  $\text{PCTVAR} < 80\%$  are used to derive the statistics.

**Table 3: Statistics of  $\Delta$ SSS (Satellite - ISAS)**

Condition	#	Median	Mean	Std	RMS	IQR
all	42121	0.01	0.01	1.70	0.60	0.59
C1	16	0.12	0.11	0.36	0.36	0.56
C2	222	-0.03	-0.04	0.60	0.60	0.58
C3	0	NaN	NaN	NaN	NaN	NaN
C4	1876	0.17	0.12	0.98	0.99	0.73
C5	12936	0.02	0.03	0.58	0.59	0.59
C6	342	0.09	0.19	1.42	1.44	0.78
C7a	1400	-0.01	0.01	0.81	0.81	0.52
C7b	18187	0.02	0.02	0.69	0.69	0.65
C7c	21020	0.01	0.00	0.49	0.49	0.55
C8a	25690	0.03	0.03	0.70	0.70	0.69
C8b	14914	-0.02	-0.02	0.37	0.37	0.46
C8c	0	NaN	NaN	NaN	NaN	NaN
C9a	126	0.07	-0.05	1.21	1.21	0.89
C9b	40481	0.01	0.01	0.60	0.60	0.59
C9c	0	NaN	NaN	NaN	NaN	NaN

## References

- Argo. Argo float data and metadata from global data assembly centre (argo gdac), 2000. doi: [10.17882/42182](https://doi.org/10.17882/42182).
- Abderrahim Bentamy and Denis Croize Fillon. Gridded surface wind fields from Metop/ASCAT measurements. *Int. J. Remote Sens.*, 33(6):1729–1754, March 2012. ISSN 1366-5901. doi: [10.1080/01431161.2011.600348](https://doi.org/10.1080/01431161.2011.600348).
- Abderrahim Bentamy, Semyon A. Grodsky, James A. Carton, Denis Croizé-Fillon, and Bertrand Chapron. Matching ASCAT and QuikSCAT winds. *J. Geophys. Res.*, 117(C2), February 2012. ISSN 0148-0227. doi: [10.1029/2011JC007479](https://doi.org/10.1029/2011JC007479). C02011.
- Jacqueline Boutin, Jean-Luc Vergely, and Stéphane Marchand. SMOS SSS L3 debias v2 maps generated by CATDS CEC LOCEAN. V2.1. SEANOE, 2017. doi: [10.17882/52804](https://doi.org/10.17882/52804).
- Jaqueline Boutin, Y. Chao, W. E. Asher, T. Delcroix, R. Drucker, K. Drushka, N. Kolodziejczyk, T. Lee, N. Reul, G. Reverdin, J. Schanze, A. Soloviev, L. Yu, J. Anderson, L. Brucker, E. Dinnat, A. S. Garcia, W. L. Jones, C. Maes, T. Meissner, W. Tang, N. Vinogradova, and B. Ward. Satellite and In Situ Salinity: Understanding Near-Surface Stratification and Sub-footprint Variability. *Bull. Am. Meteorol. Soc.*, 97(8):1391–1407, 2016. ISSN 1520-0477. doi: [10.1175/bams-d-15-00032.1](https://doi.org/10.1175/bams-d-15-00032.1).
- Clément de Boyer Montégut, Gurvan Madec, A. S. Fischer, A. Lazar, and D. Ludicone. Mixed layer depth over the global ocean: An examination of profile data and a profile-based climatology. *J. Geophys. Res.*, 109(C12):C12003, December 2004. ISSN 0148-0227. doi: [10.1029/2004jc002378](https://doi.org/10.1029/2004jc002378).
- Clément de Boyer Montégut, Juliette Mignot, Alban Lazar, and Sophie Cravatte. Control of salinity on the mixed layer depth in the world ocean: 1. General description. *J. Geophys. Res.*, 112(C6):C06011, June 2007. ISSN 0148-0227. doi: [10.1029/2006jc003953](https://doi.org/10.1029/2006jc003953).

- Ralph R. Ferraro. Ssm/i derived global rainfall estimates for climatological applications. *J. Geophys. Res.*, 1021:16715–16736, 07 1997. doi: [10.1029/97JD01210](https://doi.org/10.1029/97JD01210).
- Ralph R. Ferraro, Fuzhong Weng, Norman C. Grody, and Limin Zhao. Precipitation characteristics over land from the NOAA-15 AMSU sensor. *Geophys. Res. Lett.*, 27(17):2669–2672, 2000. doi: [10.1029/2000GL011665](https://doi.org/10.1029/2000GL011665).
- Fabienne Gaillard, E. Autret, V. Thierry, P. Galaup, C. Coatanoan, and T. Loubrieu. Quality Control of Large Argo Datasets. *J. Atmos. Oceanic Technol.*, 26(2):337–351, 2012/10/10 2009. doi: [10.1175/2008JTECHO552.1](https://doi.org/10.1175/2008JTECHO552.1).
- Fabienne Gaillard, Thierry Reynaud, Virginie Thierry, Nicolas Kolodziejczyk, and Karina von Schuckmann. In Situ-Based Reanalysis of the Global Ocean Temperature and Salinity with ISAS: Variability of the Heat Content and Steric Height. *J. Clim.*, 29(4):1305–1323, February 2016. ISSN 1520-0442. doi: [10.1175/jcli-d-15-0028.1](https://doi.org/10.1175/jcli-d-15-0028.1).
- Robert J. Joyce, John E. Janowiak, Phillip A. Arkin, and Pingping Xie. CMORPH: A Method that Produces Global Precipitation Estimates from Passive Microwave and Infrared Data at High Spatial and Temporal Resolution. *J. Hydrometeorol.*, 5(3):487–503, June 2004. ISSN 1525-7541. doi: [10.1175/1525-7541\(2004\)005<0487:camtpg>2.0.co;2](https://doi.org/10.1175/1525-7541(2004)005<0487:camtpg>2.0.co;2).
- Nicolas Kolodziejczyk, Gilles Reverdin, and Alban Lazar. Interannual Variability of the Mixed Layer Winter Convection and Spice Injection in the Eastern Subtropical North Atlantic. *J. Phys. Oceanogr.*, 45(2):504–525, Feb 2015. ISSN 1520-0485. doi: [10.1175/jpo-d-14-0042.1](https://doi.org/10.1175/jpo-d-14-0042.1).
- Christian Kummerow, Y. Hong, W. S. Olson, S. Yang, R. F. Adler, J. McCollum, R. Ferraro, G. Petty, D-B. Shin, and T. T. Wilheit. The Evolution of the Goddard Profiling Algorithm (GPROF) for Rainfall Estimation from Passive Microwave Sensors. *J. Appl. Meteorol.*, 40(11):1801–1820, 2001. doi: [10.1175/1520-0450\(2001\)040<1801:TEOTGP>2.0.CO;2](https://doi.org/10.1175/1520-0450(2001)040<1801:TEOTGP>2.0.CO;2).