



# Match-up database Analyses Report

SMOS-L2-DPGS-v662

Sea mammals

Southern Ocean

*prepared by the Pi-MEP Consortium*

March 15, 2019

# Contents

<b>1</b>	<b>Overview</b>	<b>5</b>
<b>2</b>	<b>The MDB file datasets</b>	<b>6</b>
2.1	Satellite SSS product	6
2.1.1	SMOS-L2-DPGS-v662	6
2.2	In situ SSS dataset	9
2.3	Auxiliary geophysical datasets	10
2.3.1	CMORPH	10
2.3.2	ASCAT	11
2.3.3	ISAS	11
2.3.4	World Ocean Atlas Climatology	12
2.4	Overview of the Match-ups generation method	12
2.4.1	In Situ/Satellite data filtering	12
2.4.2	In Situ/Satellite Co-localization	12
2.4.3	MDB pair Co-localization with auxiliary data and complementary information	13
2.4.4	Content of the Match-Up NetCDF files	14
2.5	MDB characteristics for the particular in situ/satellite pairs	21
2.5.1	Number of paired SSS data as a function of time and distance to coast	21
2.5.2	Histograms of the SSS match-ups	21
2.5.3	Distribution of in situ SSS depth measurements	22
2.5.4	Spatial Distribution of Match-ups	23
2.5.5	Histograms of the spatial and temporal lags of the match-ups pairs	24
<b>3</b>	<b>MDB file Analyses</b>	<b>24</b>
3.1	Spatial Maps of the Temporal mean and Std of in situ and satellite SSS and of the difference ( $\Delta$ SSS)	24
3.2	Time series of the monthly averaged mean and Std of in situ and satellite SSS and of the ( $\Delta$ SSS)	26
3.3	Zonally-averaged Time-mean and temporal Std of in situ and satellite SSS and of the $\Delta$ SSS	26
3.4	Scatterplots of satellite vs in situ SSS by latitudinal bands	28
3.5	Time series of the monthly averaged mean and Std of the $\Delta$ SSS sorted by latitudinal bands	29
3.6	$\Delta$ SSS sorted as function of geophysical parameters	29
3.7	$\Delta$ SSS maps and statistics for different geophysical conditions	30
<b>4</b>	<b>Summary</b>	<b>32</b>

## List of Figures

1	Number of match-ups between Sea mammals and SMOS-L2-DPGS-v662 SSS as a function of time (a) and as function of the distance to coast (b) over the Southern Ocean Pi-MEP region and for the full satellite product period.	21
2	Histograms of SSS from Sea mammals (a) and SMOS-L2-DPGS-v662 (b) considering all match-up pairs per bins of 0.1 over the Southern Ocean Pi-MEP region and for the full satellite product period.	21

3	Histograms of the depth of the upper level SSS measurements from Sea mammals in the Match-up DataBase for the Southern Ocean Pi-MEP region (a) and temporal mean spatial distribution of pressure of the in situ SSS data over $1^\circ \times 1^\circ$ boxes and for the full satellite product period (b). . . . .	22
4	Number of SSS match-ups between Sea mammals SSS and the SMOS-L2-DPGS-v662 SSS product for the Southern Ocean Pi-MEP region over $1^\circ \times 1^\circ$ boxes and for the full satellite product period. . . . .	23
5	Histograms of the spatial (a) and temporal (b) lags between the time of the Sea mammals measurements and the date of the corresponding SMOS-L2-DPGS-v662 SSS product. . . . .	24
6	Temporal mean (left) and Std (right) of SSS from SMOS-L2-DPGS-v662 (top), Sea mammals (middle), and of $\Delta$ SSS (Satellite - Sea mammals). Only match-up pairs are used to generate these maps. . . . .	25
7	Time series of the monthly averaged mean SSS (top), mean $\Delta$ SSS (Satellite - Sea mammals) and Std of $\Delta$ SSS (Satellite - Sea mammals) over the Southern Ocean Pi-MEP region considering all match-ups collected by the Pi-MEP platform. . . . .	26
8	Left panel: Zonally averaged time mean SSS from SMOS-L2-DPGS-v662 (black) and from Sea mammals (blue). Right panel: zonally averaged time-mean $\Delta$ SSS (Satellite - Sea mammals) for all the collected Pi-MEP match-up pairs estimated over the full satellite product period. . . . .	27
9	Contour maps of the concentration of SMOS-L2-DPGS-v662 SSS (y-axis) versus Sea mammals SSS (x-axis) at match-up pairs for different latitude bands. For each plot, the red line shows $x=y$ . The black thin and dashed lines indicate a linear fit through the data cloud and the $\pm 95\%$ confidence levels, respectively. The number match-up pairs $n$ , the slope and $R^2$ coefficient of the linear fit, the root mean square (RMS) and the mean bias between satellite and in situ data are indicated for each latitude band in each plots. . . . .	28
10	Monthly-average mean (red curves) $\Delta$ SSS (Satellite - Sea mammals) and $\pm 1$ Std (black vertical thick bars) as function of time for all the collected Pi-MEP match-up pairs estimated over the Southern Ocean Pi-MEP region and for the full satellite product period are shown for different latitude bands: (a) Latitude band $80^\circ\text{S}$ - $80^\circ\text{N}$ , (b) latitude band $20^\circ\text{S}$ - $20^\circ\text{N}$ , (c) Mid Latitude bands $40^\circ\text{S}$ - $20^\circ\text{S}$ and $20^\circ\text{N}$ - $40^\circ\text{N}$ and (d) Latitude bands $60^\circ\text{S}$ - $40^\circ\text{S}$ and $40^\circ\text{N}$ - $60^\circ\text{N}$ . . . . .	29
11	$\Delta$ SSS (Satellite - Sea mammals) sorted as function of Sea mammals SSS values a), Sea mammals SST b), ASCAT Wind speed c), CMORPH rain rate d) and distance to coast (e). In all plots the mean and Std of $\Delta$ SSS for each bin is indicated by the red curves and black vertical thick bars ( $\pm 1$ Std) . . . . .	30
12	Temporal mean gridded over spatial boxes of size $1^\circ \times 1^\circ$ of $\Delta$ SSS (SMOS-L2-DPGS-v662 - Sea mammals) for 6 different subdatasets corresponding to: RR=0 mm/h, $3 < U_{10} < 12$ m/s, $\text{SST} > 5^\circ\text{C}$ , distance to coast $> 800$ km (a), RR=0 mm/h, $3 < U_{10} < 12$ m/s (b), RR $> 1$ mm/h and $U_{10} < 4$ m/s (c),MLD $< 20$ m (d),WOA2013 SSS Std $< 0.2$ (e),WOA2013 SSS Std $> 0.2$ (f). . . . .	31
13	Normalized histogram of $\Delta$ SSS (SMOS-L2-DPGS-v662 - Sea mammals) for 6 different subdatasets corresponding to: RR=0 mm/h, $3 < U_{10} < 12$ m/s, $\text{SST} > 5^\circ\text{C}$ , distance to coast $> 800$ km (a), RR=0 mm/h, $3 < U_{10} < 12$ m/s (b), RR $> 1$ mm/h and $U_{10} < 4$ m/s (c), MLD $< 20$ m (d), WOA2013 SSS Std $< 0.2$ (e), WOA2013 SSS Std $> 0.2$ (f). . . . .	32

## Acronym

Aquarius	NASA/CONAE Salinity mission
ASCAT	Advanced Scatterometer
ATBD	Algorithm Theoretical Baseline Document
BLT	Barrier Layer Thickness
CMORPH	CPC MORPHing technique
CTD	Instrument used to measure the conductivity, temperature, and pressure of seawater
DM	Delayed Mode
EO	Earth Observation
ESA	European Space Agency
FTP	File Transfer Protocol
GOSUD	Global Ocean Surface Underway Data
GTMBA	The Global Tropical Moored Buoy Array
Ifremer	Institut français de recherche pour l'exploitation de la mer
IPEV	Institut polaire français Paul-Émile Victor
IQR	Interquartile range
ISAS	In Situ Analysis System
Kurt	Kurtosis (fourth central moment divided by fourth power of the standard deviation)
L2	Level 2
LEGOS	Laboratoire d'Etudes en Géophysique et Océanographie Spatiales
LOCEAN	Laboratoire d'Océanographie et du Climat : Expérimentations et Approches Numériques
LOPS	Laboratoire d'Océanographie Physique et Spatiale
MDB	Match-up Data Base
MEOP	Marine Mammals Exploring the Oceans Pole to Pole
MLD	Mixed Layer Depth
NCEI	National Centers for Environmental Information
NRT	Near Real Time
NTAS	Northwest Tropical Atlantic Station
OI	Optimal interpolation
Pi-MEP	Pilot Mission Exploitation Platform
PIRATA	Prediction and Researched Moored Array in the Atlantic
QC	Quality control
$R_{sat}$	Spatial resolution of the satellite SSS product
RAMA	Research Moored Array for African-Asian-Australian Monsoon Analysis and Prediction
$r^2$	Square of the Pearson correlation coefficient
RMS	Root mean square
RR	Rain rate
SAMOS	Shipboard Automated Meteorological and Oceanographic System
Skew	Skewness (third central moment divided by the cube of the standard deviation)
SMAP	Soil Moisture Active Passive (NASA mission)
SMOS	Soil Moisture and Ocean Salinity (ESA mission)
SPURS	Salinity Processes in the Upper Ocean Regional Study
SSS	Sea Surface Salinity
$SSS_{in situ}$	In situ SSS data considered for the match-up

$SSS_{SAT}$	Satellite SSS product considered for the match-up
$\Delta SSS$	Difference between satellite and in situ SSS at colocalized point ( $\Delta SSS = SSS_{SAT} - SSS_{insitu}$ )
SST	Sea Surface Temperature
Std	Standard deviation
Std*	Robust Standard deviation = $\text{median}(\text{abs}(x - \text{median}(x))) / 0.67$ (less affected by outliers than Std)
Stratus	Surface buoy located in the eastern tropical Pacific
Survostral	SURveillance de l'Océan AuSTRAL (Monitoring the Southern Ocean)
TAO	Tropical Atmosphere Ocean
TSG	ThermoSalinoGraph
WHOI	Woods Hole Oceanographic Institution
WHOTS	WHOI Hawaii Ocean Time-series Station
WOA	World Ocean Atlas

# 1 Overview

In this report, we present systematic analyses of the Match-up DataBase (MDB) files generated by the Pi-MEP platform within the following Pi-MEP region and for the below pair of Satellite/In situ SSS data:

- Pi-MEP region: Southern Ocean (download the corresponding mask [here](#))
- SSS satellite product ( $SSS_{SAT}$ ): SMOS-L2-DPGS-v662
- In situ dataset ( $SSS_{In situ}$ ): Sea mammals (download the corresponding report [here](#))

In the following,  $\Delta SSS = SSS_{SAT} - SSS_{In situ}$  denotes the difference between the satellite and in situ SSS at the colocalized points that form the MDB.

This report presents successively:

The MDB file DataSets (Section 2)

- A short description of the satellite SSS product considered in the match-up (2.1)
- A short description of the In situ SSS dataset considered in the match-up (2.2)
- A short description of the auxiliary geophysical datasets co-localized with SSS pairs (2.3)
- An overview of how the Match-ups were evaluated (2.4)
- An overview of the MDB characteristics for the particular in situ/satellite pairs (2.5)

The major results of the MDB file Analyses (Section 3)

- Spatial Maps of the Time-mean and temporal Std of in situ and satellite SSS and of the  $\Delta SSS$  (3.1)
- Time series of the monthly averaged mean and Std of in situ and satellite SSS and of the  $\Delta SSS$  (3.2)
- Zonally-averaged Time-mean and temporal Std of in situ and satellite SSS and of the  $\Delta SSS$  (3.3)
- Scatterplots of satellite vs in situ SSS by latitudinal bands (3.4)
- Time series of the monthly averaged mean and Std of the  $\Delta SSS$  sorted by latitudinal bands (3.5)
- $\Delta SSS$  sorted as function of geophysical parameters (3.6)
- $\Delta SSS$  maps and statistics for different geophysical conditions (3.7)

All analyses are conducted over the Pi-MEP Region specified above and over the full satellite SSS product period.

## 2 The MDB file datasets

### 2.1 Satellite SSS product

#### 2.1.1 SMOS-L2-DPGS-v662

Quality and major features of the SMOS Level 2 Sea Surface Salinity data products generated by version 662 of the Level 2OS Operational Processor (L2OS) can be found in the [SMOS-Level-2-Ocean-Salinity-v662-release-note](#). Version 662 of the Level 2 Sea Surface Salinity data product is available for the SMOS mission lifetime with the following file class and version:

File class	File version	From	To
REPR	V662	1 June 2010	09 May 2017
OPER	V662	10 May 2017	present

The data set acquired during the SMOS mission commissioning phase (from January 2010 to 31 May 2010) has been acquired during periods when the MIRAS instrument underwent several tests and was operated in different modes, causing drifts not fully compensated by the on-ground calibration processing. For that reason, this data set has not been reprocessed with the latest version of the L2OS processor. The SMOS data users are invited to use this new data set, which supersedes the previous one generated by the algorithm baseline version 622 and to read this note carefully to ensure optimum exploitation of the version 662 data set. Further information on the quality of the data set can be found in the reprocessing reports for data quality control available [here](#) and for data verification available [here](#).

#### Main improvements in the L2OS version 662 data set

The major improvements introduced in the currently operational version 662 of the SMOS Level 2 sea surface salinity processor are:

1. Modified User Data Product (UDP) containing salinities retrieved using only the roughness model previously known as model 1, or SSS1, which has now been selected as the reference model for estimating the sea roughness contribution to brightness temperature. Salinities retrieved using roughness models 2 and 3 are still available in the Data Analysis Product (DAP).
2. A new salinity product corrected for land-sea contamination (LSC) (SSS\_corr). Contamination of L1 brightness temperatures when the instrument images a scene that includes a land-sea transition in the FOV (up to 1000 km from the coast) has been shown to introduce significant errors (up to 2 pss) in salinity fields. For a full description, see Annex 5 in the Algorithm Theoretical Baseline Document (ATBD), available [here](#). Bias correction LUTs (so called mixed-scene LUTs) have been generated from a long time series of L1 data for both ascending and descending orbits and are applied to L1 brightness temperatures before retrieval of SSS\_corr. The method used to derive the sea land-sea contamination correction LUTs is described in section 2.2.8 of the Table Generation Requirement Document (TGRD), available [here](#). If land-sea contamination correction has been applied to any of the measurements used during SSS\_corr retrieval, a flag (Fg\_ctrl\_mixed\_scene) is set. Salinities retrieved without land-sea correction (SSS\_uncorr) are also available in the UDP.
3. New (experimental) salinity anomaly product (SSS\_anom) computed from SSS\_corr and WOA 2009 climatology (SSS\_anom = SSS\_corr minus WOA 2009). Daily interpolated climatology is computed from the monthly WOA 2009 LUT before extracting SSS\_anom.

ESL s plan to develop a SMOS-based climatology to be used in future versions of the L2OS processor, with the objective of providing a de-biased SSS anomaly field.

4. New scene-based filtering algorithm to mitigate contamination from RFI and other sources (e.g., sun), based on a set of metrics comparing differences between brightness temperatures of successive snapshots including a complete polarization cycle (so-called scenes). A scene is defined in section 2.2.8.2 of the TGRD, and the scene-based filtering algorithm is described in section 2.2.8.4 of the TGRD, available [here](#).
5. New sun glint model and sun brightness temperatures LUTs used as part of the forward model, and to set sun glint flags more accurately. Operational (OPER) products use a constant sun brightness temperature, whereas the reprocessed products (REPR) use a daily estimated L-band sun brightness temperature LUT for orbits prior to 22 November 2016.
6. Roughness model 1 LUT has been updated by ESL, improving the estimation of forward model roughness brightness temperatures at wind speeds  $> 12$  m/s.
7. TEC retrieved from SMOS 3rd Stokes polarimetric measurements used for both ascending and descending orbits (for both sea surface salinity retrievals and OTT computation), to provide an improved Faraday rotation estimation.
8. Acard parameter computed with land-sea corrected L1 brightness temperatures and the complete forward model including flat sea, roughness model 1, galactic and sun glint components.
9. Modified UDP format : see Tables below. Land sea contamination corrected salinities and associated fields/flags have suffix "\_corr"; uncorrected salinities have suffix "\_uncorr"; whilst anomalies have suffix "\_anom". For further details of the new UDP format see tables 47, 48 and 49 in section 3.2.6 of the Input/Output Data Definition Document (IODD) available [here](#).
10. Updated configuration of switches and filters used in the data processing. For further information see the section 2.4.7 of the TGRD, available [here](#). The L2OS version 662 data set has been generated using the same L1c data set as the previous L2OS version 622 data set: i.e., L1c data version 620. For further details on the L1c data sets see the L1c data version 620 read-me-first note available here: [here](#)

## L2OS version 662 performance and caveats

The reprocessed data set has been analysed by ESLs and ARGANS. The reference document is mentioned above. The main conclusions are:

- Land-sea contamination corrected salinities (SSS\_corr) almost cancel the global mean bias in near -to-coast regions ( $> 40$  km and  $< 800$  km) compared to SSS\_uncorr. Also, there are more valid SSS\_corr retrievals near to the coast than in SSS\_uncorr (the LSC correction allows retrieval of previously contaminated pixels). However, in regions with high RFI (e.g. China seas, NW Indian Ocean, DEW line - see RFI probability maps from CESBIO: [http://www.cesbio.upstlse.fr/SMOS\\_blog/smos\\_rfi/](http://www.cesbio.upstlse.fr/SMOS_blog/smos_rfi/)) or natural geophysical variability (e.g. river plumes), land-sea contamination correction is either unavailable (due to insufficient data to compute the land-sea correction LUT) or unreliable (due to a mismatch between WOA climatology and rapid salinity variability). In these regions, SSS\_corr is prone to inaccuracies (see also plots in Section 5 below).



- Globally, the novel scene-based filtering and updated roughness model 1 determine an increase in the number of retrievals in both ascending and descending orbits. The new sun glint model also allows an increase in the number and quality of retrievals at the edge of the swath during periods of high sun glint (e.g., western edge of southern hemisphere descending orbits, in November-January) and high sun L-band intensity (2012-2015).
- The new experimental salinity anomaly product is still experimental, as the WOA 2009 climatology is not always directly related to SMOS surface salinities, especially in regions of high variability (e.g., ITCZ). ESLs plan to derive a SMOS based climatology for future anomaly products, to provide a field intrinsically devoid of systematic errors. The El-Niño event of 2015-2016 is visible in Pacific region ascending and descending orbit Hovmoller plots (see Section 2.4.1 in the L2OS v662 reprocessing verification report).
- Across-track biases and ascending-descending differences still remain. Retrievals near to the edge of the swath ( $x_{\text{swath}} > \pm 350$  km) have higher uncertainties due to the smaller number of measurements, and contamination from various sources, especially sun aliases and associated ripples (tails). Ascending orbits have less bias than descending (see across-track Hovmoller plots in the L2OS v662 reprocessing verification report), while descending passes have stronger biases during January-March and October-December periods.
- ESLs have reported that there is evidence of residual inaccuracies in salinity retrievals due to TEC and galactic glint modelling issues. Therefore, users should be aware that salinities retrieved during periods of high TEC activity (corresponding to high solar activity, especially for descending orbits) and high galactic glint (see sections 5.2 and 5.5 in the L2OS Reprocessing Report) are less accurate.
- Strong latitudinal bias in SSS\_corr can be seen in the Northern Hemisphere during March-May in both ascending and descending orbits (see global Hovmoller plots in figures 18 and 20 in the L2OS v662 reprocessing verification report), but these are not visible in SSS\_uncorr. Similar latitudinal biases can also be seen in SSS\_anom for Pacific and Atlantic regions (see Hovmoller plots in figures 35-39 in the L2OS v662 reprocessing report). Therefore, land-sea contamination corrected salinities (and anomalies) above 30N during these periods exhibit worse performance than elsewhere or in different periods of the year.

### Filtering retrievals

We strongly recommend users to filter L2OS sea surface salinity retrievals using one of the following set of criteria:

1. For best quality data:  $Dg\_quality\_SSS < 150$
2. For more data but with lower quality :  $Fg\_ctrl\_poor\_geophysical = 0$  and  $Fg\_ctrl\_poor\_retrieval = 0$
3. Other combinations of UDP flags and filters including at least  $Fg\_ctrl\_chi2 = 0$  or  $Fg\_ctrl\_chi2\_P = 0$
4. Other filters used by the L2OS Expert Support Laboratories for generating Level 3 salinity maps as described in the L2OS v662 reprocessing verification report sections 2.1 and 2.2, available [here](#).

### Flags used before MDB files generation

We only select data in the MDB files such as the following conditions or flags are met:

- Dg\_quality\_SSS < 150
- Dg\_af\_fov > 130
- control\_flag\_set: CTRL\_ECMWF
- control\_flag\_clear: CTRL\_NUM\_MEAS\_MIN, CTRL\_NUM\_MEAS\_LOW, CTRL\_MANY\_OUTLIERS, CTRL\_SUNGLINT, CTRL\_MOONGLINT, CTRL\_REACH\_MAXITER, CTRL\_MARQ, CTRL\_CHI2\_P, CTRL\_SUSPECT\_RFI
- science\_flag\_set: SC\_LOW\_WIND, SC\_LAND\_SEA\_COAST1
- science\_flag\_clear: SC\_ICE, SC\_SUSPECT\_ICE

### Satellite SSS product characteristics

Table 1: Satellite SSS product characteristics

SMOS-L2-DPGS-v662	
Spatial resolution	~40 km
Temporal repeat	3 days
Temporal coverage	From 2010-06-01 to now
Spatial coverage	Global [-180 180 -90 90]
Data Provider	ESA
Version	662
ATBD	<a href="#">SMOS_L2OS-ATBD</a>
Data access	<a href="#">level-2-ocean-salinity</a>

## 2.2 In situ SSS dataset

Instrumentation of southern elephant seals with satellite-linked CTD tags proposes unique temporal and spatial coverage. This includes extensive data from the Antarctic continental slope and shelf regions during the winter months, which is outside the conventional areas of Argo autonomous floats and ship-based studies. The use of elephant seals has been particularly effective to sample the Southern Ocean and the North Pacific. Other seal species have been successfully used in the North Atlantic, such as hooded seals. The marine mammal dataset ([MEOP-CTD database](#)) is quality controlled and calibrated using delayed-mode techniques involving comparisons with other existing profiles as well as cross-comparisons similar to established protocols within the Argo community, with a resulting accuracy of  $\pm 0.03$  °C in temperature and  $\pm 0.05$  in salinity or better ([Treasure et al. \(2017\)](#)). The marine mammal data were collected and made freely available by the International MEOP Consortium and the national programs that contribute to it (<http://www.meop.net>). This dataset is updated once a year and can be downloaded [here](#) ([Roquet et al. \(2018\)](#)). A preprocessing stage is applied to the database before being used by the Pi-MEP which consist to keep only profile with salinity, temperature and pressure quality flags set to 1 or 2 and if at least one measurement is in the top 10 m depth. Marine mammal SSS correspond to the top (shallowest) profile salinity data provided that profile depth is 10 m or less.

## 2.3 Auxiliary geophysical datasets

Additional EO datasets are used to characterize the geophysical conditions at the in situ/satellite SSS pair measurement locations and time, and 10 days prior the measurements to get an estimate of the geophysical condition and history. As discussed in [Boutin et al. \(2016\)](#), the presence of vertical gradients in, and horizontal variability of, sea surface salinity indeed complicates comparison of satellite and in situ measurements. The additional EO data are used here to get a first estimates of conditions for which L-band satellite SSS measured in the first centimeters of the upper ocean within a 50-150 km diameter footprint might differ from pointwise in situ measurements performed in general between 10 and 5 m depth below the surface. The spatio-temporal variability of SSS within a satellite footprint (50–150 km) is a major issue for satellite SSS validation in the vicinity of river plumes, frontal zones, and significant precipitation. Rainfall can in some cases produce vertical salinity gradients exceeding  $1 \text{ pss m}^{-1}$ ; consequently, it is recommended that satellite and in situ SSS measurements less than 3–6 h after rain events should be considered with care when used in satellite calibration/validation analyses. To identify such situation, the Pi-MEP test platform is first using [CMORPH](#) products to characterize the local value and history of rain rate and [ASCAT](#) gridded data are used to characterize the local surface wind speed and history. For validation purpose, the [ISAS](#) monthly SSS in situ analysed fields at 5 m depth are collocated and compared with the satellite SSS products. The use of ISAS is motivated by the fact that it is used in the SMOS L2 official validation protocol in which systematic comparisons of SMOS L2 retrieved SSS with ISAS are done. In complement to ISAS, monthly std climatological fields from the World Ocean Atlas ([WOA13](#)) at the match-up pairs location and date are also used to have an a priori information of the local SSS variability.

### 2.3.1 CMORPH

Precipitation are estimated using the [CMORPH](#) 3-hourly products at  $1/4^\circ$  resolution ([Joyce et al. \(2004\)](#)). CMORPH (CPC MORPHing technique) produces global precipitation analyses at very high spatial and temporal resolution. This technique uses precipitation estimates that have been derived from low orbiter satellite microwave observations exclusively, and whose features are transported via spatial propagation information that is obtained entirely from geostationary satellite IR data. At present NOAA incorporate precipitation estimates derived from the passive microwaves aboard the DMSF 13, 14 and 15 (SSM/I), the NOAA-15, 16, 17 and 18 (AMSU-B), and AMSR-E and TMI aboard NASA's Aqua, TRMM and GPM spacecraft, respectively. These estimates are generated by algorithms of [Ferraro \(1997\)](#) for SSM/I, [Ferraro et al. \(2000\)](#) for AMSU-B and [Kummerow et al. \(2001\)](#) for TMI. Note that this technique is not a precipitation estimation algorithm but a means by which estimates from existing microwave rainfall algorithms can be combined. Therefore, this method is extremely flexible such that any precipitation estimates from any microwave satellite source can be incorporated.

With regard to spatial resolution, although the precipitation estimates are available on a grid with a spacing of 8 km (at the equator), the resolution of the individual satellite-derived estimates is coarser than that - more on the order of 12 x 15 km or so. The finer "resolution" is obtained via interpolation.

In effect, IR data are used as a means to transport the microwave-derived precipitation features during periods when microwave data are not available at a location. Propagation vector matrices are produced by computing spatial lag correlations on successive images of geostationary satellite IR which are then used to propagate the microwave derived precipitation estimates. This process governs the movement of the precipitation features only. At a given location, the shape and intensity of the precipitation features in the intervening half hour periods between microwave scans are determined by performing a time-weighting interpolation between microwave-derived

features that have been propagated forward in time from the previous microwave observation and those that have been propagated backward in time from the following microwave scan. NOAA refer to this latter step as "morphing" of the features.

For the present Pi-MEP products, we only considered the 3-hourly products at 1/4 degree resolution. The entire CMORPH record (December 2002-present) for 3-hourly, 1/4 degree lat/lon resolution can be found at: [ftp://ftp.cpc.ncep.noaa.gov/precip/CMORPH\\_V1.0/RAW/](ftp://ftp.cpc.ncep.noaa.gov/precip/CMORPH_V1.0/RAW/). CMORPH estimates cover a global belt (-180°W to 180°E) extending from 60°S to 60°N latitude and are available for the complete period of the Pi-MEP core datasets (Jan 2010-now).

### 2.3.2 ASCAT

Advanced SCATterometer (ASCAT) daily data produced and made available at [Ifremer/CERSAT](#) on a 0.25°x0.25° resolution grid ([Bentamy and Fillon \(2012\)](#)) since March 2007 are used to characterize the mean daily wind at the match-up pair location as well as the wind history during the 10-days period preceding the in situ measurement date. These wind fields are calculated based on a geostatistical method with external drift. Remotely sensed data from ASCAT are considered as observations while those from numerical model analysis (ECMWF) are associated with the external drift. The spatial and temporal structure functions for wind speed, zonal and meridional wind components are estimated from ASCAT retrievals. Furthermore, the new procedure includes a temporal interpolation of the retrievals based on the complex empirical orthogonal function (CEOF) approach, in order to enhance the sampling length of the scatterometer observations. The resulting daily wind fields involves the main known surface wind patterns as well as some variation modes associated with temporal and spatial moving features. The accuracy of the gridded winds was investigated through comparisons with moored buoy data in [Bentamy et al. \(2012\)](#) and resulted in rms differences for wind speed and direction are about 1.50 m.s<sup>-1</sup> and 20°.

### 2.3.3 ISAS

The In Situ Analysis System (ISAS), as described in [Gaillard et al. \(2016\)](#) is a data based re-analysis of temperature and salinity fields over the global ocean. It was initially designed to synthesize the temperature and salinity profiles collected by the Argo program. It has been later extended to accommodate all type of vertical profile as well as time series. ISAS gridded fields are entirely based on in-situ measurements. The methodology and configuration have been conceived to preserve as much as possible the data information content and resolution. ISAS is developed and run in a research laboratory (LOPS) in close collaboration with Coriolis, one of Argo Global Data Assembly Center and unique data provider for the Mercator operational oceanography system. At the moment the period covered starts in 2002 and only the upper 2000 m are considered. The gridded fields were produced over the global ocean 70°N–70°S on a 1/2° grid by the ISAS project with datasets downloaded from the Coriolis data center (for more details on ISAS see [Gaillard et al. \(2009\)](#)). In the Pi-MEP, the product in used is the [INSITU\\_GLO\\_TS\\_OA\\_NRT-OBSERVATIONS\\_013\\_002\\_a](#) v6.2 NRT derived at the Coriolis data center and provided by Copernicus ([www.marine.copernicus.eu/documents/PUM/CMEMS-INS-PUM-013-002-ab.pdf](http://www.marine.copernicus.eu/documents/PUM/CMEMS-INS-PUM-013-002-ab.pdf)). The major contribution to the data set is from Argo array of profiling floats, reaching an approximate resolution of one profile every 10-days and every 3-degrees over the satellite SSS period (<http://www.umr-lops.fr/SNO-Argo/Products/ISAS-T-S-fields/>); in this version SSS from ship of opportunity thermosalinographs are not used, so that we can consider SMOS SSS validation using these measurements independent of ISAS. The ISAS optimal interpolation involves a structure function modeled as the sum of two

Gaussian functions, each associated with specific time and space scales, resulting in a smoothing over typically 3 degrees. The smallest scale which can be retrieved with ISAS analysis is not smaller than 300–500 km (Kolodziejczyk et al. (2015)). For validation purpose, the ISAS monthly SSS fields at 5 m depth are collocated and compared with the satellite SSS products and included in the Pi-MEP Match-up files. In addition, the "percentage of variance" fields (PCTVAR) contained in the ISAS analyses provide information on the local variability of in situ SSS measurements within  $1/2^\circ \times 1/2^\circ$  boxes.

#### 2.3.4 World Ocean Atlas Climatology

The World Ocean Atlas 2013 version 2 (WOA13 V2) is a set of objectively analyzed ( $1^\circ$  grid) climatological fields of in situ temperature, salinity and other variables provided at standard depth levels for annual, seasonal, and monthly compositing periods for the World Ocean. It also includes associated statistical fields of observed oceanographic profile data interpolated to standard depth levels on  $5^\circ$ ,  $1^\circ$ , and  $0.25^\circ$  grids. We use these fields in complement to ISAS to characterize the climatological fields (annual mean and std) at the match-up pairs location and date.

### 2.4 Overview of the Match-ups generation method

The match-up production is basically a three steps process:

1. preparation of the input in situ and satellite data, and,
2. co-localization of satellite products with in situ SSS measurements.
3. co-localization of the in situ/satellite pair with auxiliary information.

In the following, we successively detail the approaches taken for these different steps.

#### 2.4.1 In Situ/Satellite data filtering

The first step consist in filtering Sea mammals in situ dataset using the quality flags as described in 2.2 so that only valid salinity data remains in the produced match-ups.

For high-spatial resolution in situ SSS measurements such as the Thermo-SalinoGraph (TSG) SSS data from research vessels, Voluntary Observing Ships (VOS) or sailing ships, as well as SSS data from surface drifters, an additional spatial-filtering step is performed on the in situ data that will be in fine compared to the satellite SSS products. If  $R_{sat}$  is the spatial resolution of the satellite SSS product (L2 to L3-L4), we keep the in situ data at the original spatial resolution but we also estimate for all spatio-temporal samples a running median filtered SSS applied to all neighbouring in situ SSS data acquired within a distance of  $R_{sat}/2$  from a given in situ acquisition. Both the original and the filtered data are finally stored in the MDB files.

Only for satellite L2 SSS data, a third step consist in filtering spurious data using the flags and associated recommendation as provided by the official data centers and described in 2.1.

#### 2.4.2 In Situ/Satellite Co-localization

In this step, each SSS satellite acquisition is co-localized with the filtered in situ measurements. The method used for co-localization differ if the satellite SSS is a swath product (so-called Level 2-types) or a time-space composite product (so-called Level 3/level 4-types).

- For L2 SSS swath data :

If  $R_{sat}$  is the spatial resolution of the satellite swath SSS product, for each in situ data sample collected in the Pi-MEP database, the platform searches for all satellite SSS data found at grid nodes located within a radius of  $R_{sat}/2$  from the in situ data location and acquired with a time-lag from the in situ measurement date that is less or equal than  $\pm 12$  hours. If several satellite SSS samples are found to meet these criteria, the final satellite SSS match-up point is selected to be the closest in time from the in situ data measurement date. The final spatial and temporal lags between the in situ and satellite data are stored in the MDB files.

- For L3 and L4 composite SSS products :

If  $R_{sat}$  is the spatial resolution of the composite satellite SSS product and D the period over which the composite product was built (e.g., periods of 1, 7, 8, 9, 10, 18 days, 1 month, etc..) with central time  $t_0$ , for each in situ data sample collected in the Pi-MEP database during period D, the platform searches for all satellite SSS data of the composite product found at grid nodes located within a radius of  $R_{sat}/2$  from the in situ data location. If several satellite SSS product samples are found to meet these criteria, the final satellite SSS match-up point is chosen to be the composite SSS with central time  $t_0$  which is the closest in time from the in situ data measurement date. The final spatial and temporal lags between the in situ and satellite data are stored in the MDB files.

### 2.4.3 MDB pair Co-localization with auxiliary data and complementary information

MDB data consist of satellite and in-situ SSS pair datasets but also of auxiliary geophysical parameters such as local and history of wind speed and rain rates, as well as various information (climatology, distance to coast, mixed layer depth, barrier layer thickness, etc) that can be derived from in situ data and which are included in the final match-up files. The collocation of auxiliary parameters and additional information is done for each filtered in-situ SSS measurement contained in the match-up files as follows :

If  $t_{insitu}$  is the time/date at which the in situ measurement is performed, we collect:

- The [ASCAT](#) wind speed product of the same day than  $t_{insitu}$  found at the ASCAT  $1/4^\circ$  grid node with closest distance from the in situ data location and the time series of the ASCAT wind speed at the same node for the 10 days prior the in situ measurement day.
- If the in situ data is located within the  $60^\circ\text{N}$ - $60^\circ\text{S}$  band, we select the [CMORPH](#) 3-hourly product the closest in time from  $t_{insitu}$  and found at the CMORPH  $1/4^\circ$  grid node with closest distance from the in situ data location. We then store the time series of the CMORPH rain rate at the same node for the 10 days prior the in situ measurement time.

For the given month/year of the in situ data, we select the [ISAS](#) and [WOA](#) fields for the same month (and same year for ISAS fields) and take the SSS analysis (monthly mean, std) found at the closest grid node from the in situ measurement.

The distance from the in situ SSS data location to the nearest coast is evaluated and provided in km. We use a distance-to-coast map at  $1/4^\circ$  resolution where small islands have been removed.

When vertical profiles of salinity (S) and temperature (T) are made available from the in situ measurements used to build the match-up (Argo or sea mammals), the following variables are included into each satellite/in situ match-up file:

1. The vertical distribution of pressure at which the profile were measured,

2. The vertical  $S(z)$  and  $T(z)$  profiles,
3. The vertical potential density anomaly profile  $\sigma_0(z)$ ,
4. The Mixed Layer Depth (MLD). The MLD is defined here as the depth where the potential density has increased from the reference depth (10 meter) by a threshold equivalent to  $0.2^\circ\text{C}$  decrease in temperature at constant salinity:  $\sigma_0 = \sigma_{010m} + \Delta\sigma_0$  with  $\Delta\sigma_0 = \sigma_0(\theta_{10m} - 0.2, S_{10m}) - \sigma_0(\theta_{10m}, S_{10m})$  where  $\theta_{10m}$  and  $S_{10m}$  are the temperature and salinity at the reference depth (i.e. 10 m) (de Boyer Montégut et al. (2004), de Boyer Montégut et al. (2007)).
5. The Top of the Thermocline Depth (TTD) is defined as the depth at which temperature decreases from its 10 m value by  $0.2^\circ\text{C}$ .
6. The Barrier Layer if present, is defined as the intermediate layer between the top of the thermocline and the bottom of the density mixed-layer and its thickness (BLT) is defined as the difference between the MLD and the TTD.
7. The vertical profile of the buoyancy frequency  $N^2(z)$

The resulting match-ups files are serialized as NetCDF-4 files whose structure depends on the origin of the in-situ data they contain.

#### 2.4.4 Content of the Match-Up NetCDF files

```
netcdf pimep-mdb-smos-l2-v662-mammal-20100116-v01 {
dimensions:
    N_prof = 1 ;
    N_LEVELS = 27 ;
    N_DAYS_WIND = 10 ;
    N_3H_RAIN = 80 ;
    STRING = 8 ;
    TIME_Sat = UNLIMITED ; // (1 currently)
variables:
float DATE_MAMMAL(N_prof) ;
    DATE_MAMMAL:long_name = "Date of marine mammal profile" ;
    DATE_MAMMAL:units = "days since 1990-01-01 00:00:00" ;
    DATE_MAMMAL:standard_name = "time" ;
    DATE_MAMMAL:FillValue = -999.f ;
float LATITUDE_MAMMAL(N_prof) ;
    LATITUDE_MAMMAL:long_name = "Latitude of marine mammal profile" ;
    LATITUDE_MAMMAL:units = "degrees_north" ;
    LATITUDE_MAMMAL:valid_min = -90. ;
    LATITUDE_MAMMAL:valid_max = 90. ;
    LATITUDE_MAMMAL:standard_name = "latitude" ;
    LATITUDE_MAMMAL:FillValue = -999.f ;
float LONGITUDE_MAMMAL(N_prof) ;
    LONGITUDE_MAMMAL:long_name = "Longitude of mammal profile" ;
    LONGITUDE_MAMMAL:units = "degrees_east" ;
    LONGITUDE_MAMMAL:valid_min = -180. ;
    LONGITUDE_MAMMAL:valid_max = 180. ;
```

```

        LONGITUDE_MAMMAL:standard_name = "longitude" ;
        LONGITUDE_MAMMAL:_FillValue = -999.f ;
float SSS_DEPTH_MAMMAL(N_prof) ;
        SSS_DEPTH_MAMMAL:long_name = "Sea water pressure at marine mammal location
(equals 0 at sea level)" ;
        SSS_DEPTH_MAMMAL:units = "decibar" ;
        SSS_DEPTH_MAMMAL:standard_name = "sea_water_pressure" ;
        SSS_DEPTH_MAMMAL:_FillValue = -999.f ;
float SSS_MAMMAL(N_prof) ;
        SSS_MAMMAL:long_name = "Mammals SSS" ;
        SSS_MAMMAL:units = "1" ;
        SSS_MAMMAL:salinity_scale = "Practical Salinity Scale(PSS-78)" ;
        SSS_MAMMAL:standard_name = "sea_water_salinity" ;
        SSS_MAMMAL:_FillValue = -999.f ;
float SST_MAMMAL(N_prof) ;
        SST_MAMMAL:long_name = "Mammals SST" ;
        SST_MAMMAL:units = "degree Celsius" ;
        SST_MAMMAL:standard_name = "sea_water_temperature" ;
        SST_MAMMAL:_FillValue = -999.f ;
float DISTANCE_TO_COAST_MAMMAL(N_prof) ;
        DISTANCE_TO_COAST_MAMMAL:long_name = "Distance to coasts at marine mammal
location" ;
        DISTANCE_TO_COAST_MAMMAL:units = "km" ;
        DISTANCE_TO_COAST_MAMMAL:_FillValue = -999.f ;
float PLATFORM_NUMBER_MAMMAL(N_prof) ;
        PLATFORM_NUMBER_MAMMAL:long_name = "Mammals unique identifier" ;
        PLATFORM_NUMBER_MAMMAL:conventions = "WMO float identifier : A9IIIII" ;
        PLATFORM_NUMBER_MAMMAL:units = "1" ;
        PLATFORM_NUMBER_MAMMAL:_FillValue = -999.f ;
float PSAL_MAMMAL(N_prof, N_LEVELS) ;
        PSAL_MAMMAL:long_name = "Mammals salinity profile" ;
        PSAL_MAMMAL:units = "1" ;
        PSAL_MAMMAL:salinity_scale = "Practical Salinity Scale (PSS-78)" ;
        PSAL_MAMMAL:standard_name = "sea_water_salinity" ;
        PSAL_MAMMAL:_FillValue = -999.f ;
float TEMP_MAMMAL(N_prof, N_LEVELS) ;
        TEMP_MAMMAL:long_name = "Mammals temperature profile" ;
        TEMP_MAMMAL:units = "degree Celsius" ;
        TEMP_MAMMAL:standard_name = "sea_water_temperature" ;
        TEMP_MAMMAL:_FillValue = -999.f ;
float PRES_MAMMAL(N_prof, N_LEVELS) ;
        PRES_MAMMAL:long_name = "Mammals pressure profile" ;
        PRES_MAMMAL:units = "decibar" ;
        PRES_MAMMAL:standard_name = "sea_water_pressure" ;
        PRES_MAMMAL:_FillValue = -999.f ;
float RHO_MAMMAL(N_prof, N_LEVELS) ;
        RHO_MAMMAL:long_name = "Mammals in-situ density profile" ;
        RHO_MAMMAL:units = "kg/m" ;
        RHO_MAMMAL:_FillValue = -999.f ;
    
```



```

float SIGMA0_MAMMAL(N_prof, N_LEVELS) ;
    SIGMA0_MAMMAL:long_name = "Mammals potential density anomaly profile" ;
    SIGMA0_MAMMAL:units = "kg/m3" ;
    SIGMA0_MAMMAL:FillValue = -999.f ;
float N2_MAMMAL(N_prof, N_LEVELS) ;
    N2_MAMMAL:long_name = "Mammals buoyancy frequency profile" ;
    N2_MAMMAL:units = "1/s2" ;
    N2_MAMMAL:FillValue = -999.f ;
float MLD_MAMMAL(N_prof) ;
    MLD_MAMMAL:long_name = "Mixed Layer Depth (MLD) calculated from marine mam-
    mal profile (depth where  $\sigma_0 = \sigma_{010m} + \Delta\sigma_0$  with  $\Delta\sigma_0 = \sigma_0(\theta_{10m} - 0.2, S_{10m}) - \sigma_0(\theta_{10m}, S_{10m})$ 
    )" ;
    MLD_MAMMAL:units = "m" ;
    MLD_MAMMAL:FillValue = -999.f ;
float TTD_MAMMAL(N_prof) ;
    TTD_MAMMAL:long_name = "Top of Thermocline Depth (TTD) calculated from marine
    mammal profile (depth where  $\theta = \theta_{10m} - 0.2$ )" ;
    TTD_MAMMAL:units = "m" ;
    TTD_MAMMAL:FillValue = -999.f ;
float BLT_MAMMAL(N_prof) ;
    BLT_MAMMAL:long_name = "Barrier Layer Thickness (TTD-MLD)" ;
    BLT_MAMMAL:units = "m" ;
    BLT_MAMMAL:FillValue = -999.f ;
float DATE_Satellite_product(TIME_Sat) ;
    DATE_Satellite_product:long_name = "Central time of satellite SSS file" ;
    DATE_Satellite_product:units = "days since 1990-01-01 00:00:00" ;
    DATE_Satellite_product:standard_name = "time" ;
float LATITUDE_Satellite_product(N_prof) ;
    LATITUDE_Satellite_product:long_name = "Satellite product latitude at marine mammal
    location" ;
    LATITUDE_Satellite_product:units = "degrees_north" ;
    LATITUDE_Satellite_product:valid_min = -90. ;
    LATITUDE_Satellite_product:valid_max = 90. ;
    LATITUDE_Satellite_product:standard_name = "latitude" ;
    LATITUDE_Satellite_product:FillValue = -999.f ;
float LONGITUDE_Satellite_product(N_prof) ;
    LONGITUDE_Satellite_product:long_name = "Satellite product longitude at marine mam-
    mal location" ;
    LONGITUDE_Satellite_product:units = "degrees_east" ;
    LONGITUDE_Satellite_product:valid_min = -180. ;
    LONGITUDE_Satellite_product:valid_max = 180. ;
    LONGITUDE_Satellite_product:standard_name = "longitude" ;
    LONGITUDE_Satellite_product:FillValue = -999.f ;
float SSS_Satellite_product(N_prof) ;
    SSS_Satellite_product:long_name = "Satellite product SSS at marine mammal location" ;
    SSS_Satellite_product:units = "1" ;
    SSS_Satellite_product:salinity_scale = "Practical Salinity Scale(PSS-78)" ;
    SSS_Satellite_product:standard_name = "sea_surface_salinity" ;
    SSS_Satellite_product:FillValue = -999.f ;
    
```

```

float SST_Satellite_product(N_prof) ;
    SST_Satellite_product:long_name = "Satellite product SST at marine mammal location" ;
    SST_Satellite_product:units = "degree Celsius" ;
    SST_Satellite_product:standard_name = "sea_surface_temperature" ;
    SST_Satellite_product:FillValue = -999.f ;
float Spatial_lags(N_prof) ;
    Spatial_lags:long_name = "Spatial lag between marine mammal location and satellite SSS
product pixel center" ;
    Spatial_lags:units = "km" ;
    Spatial_lags:FillValue = -999.f ;
float Time_lags(N_prof) ;
    Time_lags:long_name = "Temporal lag between marine mammal time and satellite SSS
product central time" ;
    Time_lags:units = "days" ;
    Time_lags:FillValue = -999.f ;
float ROSSBY_RADIUS_at_MAMMAL(N_prof) ;
    ROSSBY_RADIUS_at_MAMMAL:long_name = "Baroclinic Rossby radius of deformation
(Chelton et al., 1998) at marine mammal location" ;
    ROSSBY_RADIUS_at_MAMMAL:units = "km" ;
    ROSSBY_RADIUS_at_MAMMAL:FillValue = -999.f ;
float Ascet_daily_wind_at_MAMMAL(N_prof) ;
    Ascet_daily_wind_at_MAMMAL:long_name = "Daily Ascet wind speed module at marine
mammal location" ;
    Ascet_daily_wind_at_MAMMAL:units = "m/s" ;
    Ascet_daily_wind_at_MAMMAL:FillValue = -999.f ;
float CMORPH_3h_Rain_Rate_at_MAMMAL(N_prof) ;
    CMORPH_3h_Rain_Rate_at_MAMMAL:long_name = "3-hourly CMORPH rain rate at ma-
rine mammal location" ;
    CMORPH_3h_Rain_Rate_at_MAMMAL:units = "mm/3h" ;
    CMORPH_3h_Rain_Rate_at_MAMMAL:FillValue = -999.f ;
float Ascet_10_prior_days_wind_at_MAMMAL(N_prof, N_DAYS_WIND) ;
    Ascet_10_prior_days_wind_at_MAMMAL:long_name = "Prior 10 days time series of Ascet
wind speed module at marine mammal location" ;
    Ascet_10_prior_days_wind_at_MAMMAL:units = "m/s" ;
    Ascet_10_prior_days_wind_at_MAMMAL:FillValue = -999.f ;
float CMORPH_10_prior_days_Rain_Rate_at_MAMMAL(N_prof, N_3H_RAIN) ;
    CMORPH_10_prior_days_Rain_Rate_at_MAMMAL:long_name = "Prior 10 days times series
of 3-hourly CMORPH Rain Rate at marine mammal location" ;
    CMORPH_10_prior_days_Rain_Rate_at_MAMMAL:units = "mm/3h" ;
    CMORPH_10_prior_days_Rain_Rate_at_MAMMAL:FillValue = -999.f ;
float SSS_ISAS_at_MAMMAL(N_prof) ;
    SSS_ISAS_at_MAMMAL:long_name = "ISAS SSS (5m depth) at marine mammal location"
;
    SSS_ISAS_at_MAMMAL:units = "1" ;
    SSS_ISAS_at_MAMMAL:salinity_scale = "Practical Salinity Scale(PSS-78)" ;
    SSS_ISAS_at_MAMMAL:standard_name = "sea_water_salinity" ;
    SSS_ISAS_at_MAMMAL:FillValue = -999.f ;
float SSS_PCTVAR_ISAS_at_MAMMAL(N_prof) ;
    SSS_PCTVAR_ISAS_at_MAMMAL:long_name = "Error on ISAS SSS (5m depth) at marine
    
```

```
mammal location (% variance)" ;
    SSS_PCTVAR_ISAS_at_MAMMAL:units = "%" ;
    SSS_PCTVAR_ISAS_at_MAMMAL:FillValue = -999.f ;
float SSS_WOA13_at_MAMMAL(N_prof) ;
    SSS_WOA13_at_MAMMAL:long_name = "Annual WOA 2013 (DECAV-1deg) SSS (0m
depth) at marine mammal location" ;
    SSS_WOA13_at_MAMMAL:units = "1" ;
    SSS_WOA13_at_MAMMAL:salinity_scale = "Practical Salinity Scale(PSS-78)" ;
    SSS_WOA13_at_MAMMAL:standard_name = "sea_surface_salinity" ;
    SSS_WOA13_at_MAMMAL:FillValue = -999.f ;
float SSS_STD_WOA13_at_MAMMAL(N_prof) ;
    SSS_STD_WOA13_at_MAMMAL:long_name = "Annual WOA 2013 (DECAV-1deg) SSS
STD (0m depth) at marine mammal location " ;
    SSS_STD_WOA13_at_MAMMAL:units = "1" ;
    SSS_STD_WOA13_at_MAMMAL:FillValue = -999.f ;
float SSS_ISAS15_at_MAMMAL(N_prof) ;
    SSS_ISAS15_at_MAMMAL:long_name = "Monthly ISAS-15 SSS (5m depth) at marine
mammal location" ;
    SSS_ISAS15_at_MAMMAL:units = "1" ;
    SSS_ISAS15_at_MAMMAL:salinity_scale = "Practical Salinity Scale (PSS-78)" ;
    SSS_ISAS15_at_MAMMAL:standard_name = "sea_water_salinity" ;
    SSS_ISAS15_at_MAMMAL:FillValue = -999.f ;
float SSS_PCTVAR_ISAS15_at_MAMMAL(N_prof) ;
    SSS_PCTVAR_ISAS15_at_MAMMAL:long_name = "Error on monthly ISAS-15 SSS (5m
depth) at marine mammal location (% variance)" ;
    SSS_PCTVAR_ISAS15_at_MAMMAL:units = "%" ;
    SSS_PCTVAR_ISAS15_at_MAMMAL:FillValue = -999.f ;
float SSS_WOA18_at_MAMMAL(N_prof) ;
    SSS_WOA18_at_MAMMAL:long_name = "Monthly WOA 2018 (DECAV-1deg) SSS (0m
depth) at marine mammal location" ;
    SSS_WOA18_at_MAMMAL:units = "1" ;
    SSS_WOA18_at_MAMMAL:salinity_scale = "Practical Salinity Scale (PSS-78)" ;
    SSS_WOA18_at_MAMMAL:standard_name = "sea_surface_salinity" ;
    SSS_WOA18_at_MAMMAL:FillValue = -999.f ;
float SSS_STD_WOA18_at_MAMMAL(N_prof) ;
    SSS_STD_WOA18_at_MAMMAL:long_name = "Monthly WOA 2018 (DECAV-1deg) SSS
STD (0m depth) at marine mammal location " ;
    SSS_STD_WOA18_at_MAMMAL:units = "1" ;
    SSS_STD_WOA18_at_MAMMAL:FillValue = -999.f ;
float SEA_ICE_CONCENTRATION_at_MAMMAL(N_prof) ;
    SEA_ICE_CONCENTRATION_at_MAMMAL:long_name = "Daily sea ice area fraction
(EUMETSAT OSI-SAF OSI-450) at marine mammal location (%)" ;
    SEA_ICE_CONCENTRATION_at_MAMMAL:units = "1" ;
    SEA_ICE_CONCENTRATION_at_MAMMAL:standard_name = "sea_ice_area_fraction" ;
    SEA_ICE_CONCENTRATION_at_MAMMAL:FillValue = -999.f ;
float CCMP_6h_Wind_Speed_at_MAMMAL(N_prof) ;
    CCMP_6h_Wind_Speed_at_MAMMAL:long_name = "6-hourly CCMP wind speed at ma-
rine mammal location" ;
    CCMP_6h_Wind_Speed_at_MAMMAL:units = "m s-1" ;
```

```
CCMP_6h_Wind_Speed_at_MAMMAL:standard_name = "wind_speed" ;
CCMP_6h_Wind_Speed_at_MAMMAL:_FillValue = -999.f ;
float CCMP_10_prior_days_Wind_Speed_at_MAMMAL(N_prof, N_DAYS_WIND_CCMP) ;
  CCMP_10_prior_days_Wind_Speed_at_MAMMAL:long_name = "Prior 10 days time series
of CCMP wind speed at marine mammal location" ;
  CCMP_10_prior_days_Wind_Speed_at_MAMMAL:units = "m s-1" ;
  CCMP_10_prior_days_Wind_Speed_at_MAMMAL:standard_name = "wind_speed" ;
  CCMP_10_prior_days_Wind_Speed_at_MAMMAL:_FillValue = -999.f ;
float CDM_GLOBCOLOUR_at_MAMMAL(N_prof) ;
  CDM_GLOBCOLOUR_at_MAMMAL:long_name = "8-day Coloured dissolved and detrital
organic materials - mean of the binned pixels at marine mammal location" ;
  CDM_GLOBCOLOUR_at_MAMMAL:units = "m-1" ;
  CDM_GLOBCOLOUR_at_MAMMAL:standard_name = "volume_absorption_coefficient_of_radiative_flux_in_sea_
;
  CDM_GLOBCOLOUR_at_MAMMAL:_FillValue = -999.f ;
float CHL1_GLOBCOLOUR_at_MAMMAL(N_prof) ;
  CHL1_GLOBCOLOUR_at_MAMMAL:long_name = "8-day Chlorophyll concentration - mean
of the binned pixels at marine mammal location" ;
  CHL1_GLOBCOLOUR_at_MAMMAL:units = "mg m-3" ;
  CHL1_GLOBCOLOUR_at_MAMMAL:standard_name = "mass_concentration_of_chlorophyll_a_in_sea_water"
;
  CHL1_GLOBCOLOUR_at_MAMMAL:_FillValue = -999.f ;
float EVAPORATION_OAFLUX_at_MAMMAL(N_prof) ;
  EVAPORATION_OAFLUX_at_MAMMAL:long_name = "Daily mean evaporation rate (OAFlux)
at marine mammal location" ;
  EVAPORATION_OAFLUX_at_MAMMAL:units = "cm year-1" ;
  EVAPORATION_OAFLUX_at_MAMMAL:_FillValue = -999.f ;
float SSS_SCRIPPS_at_MAMMAL(N_prof) ;
  SSS_SCRIPPS_at_MAMMAL:long_name = "Argo gridded monthly mean SSS (0m depth)
from SCRIPPS (Roemmich-Gilson) at marine mammal location" ;
  SSS_SCRIPPS_at_MAMMAL:units = "1" ;
  SSS_SCRIPPS_at_MAMMAL:salinity_scale = "Practical Salinity Scale (PSS-78)" ;
  SSS_SCRIPPS_at_MAMMAL:standard_name = "sea_water_salinity" ;
  SSS_SCRIPPS_at_MAMMAL:_FillValue = -999.f ;
float SSS_IPRC_at_MAMMAL(N_prof) ;
  SSS_IPRC_at_MAMMAL:long_name = "Argo gridded monthly mean SSS (0m depth) from
IPRC at marine mammal location" ;
  SSS_IPRC_at_MAMMAL:units = "1" ;
  SSS_IPRC_at_MAMMAL:salinity_scale = "Practical Salinity Scale (PSS-78)" ;
  SSS_IPRC_at_MAMMAL:standard_name = "sea_water_salinity" ;
  SSS_IPRC_at_MAMMAL:_FillValue = -999.f ;
float SST_AVHRR_at_MAMMAL(N_prof) ;
  SST_AVHRR_at_MAMMAL:long_name = "Daily OI AVHRR-only v2 SST (Reynolds et al.,
2007) at marine mammal location" ;
  SST_AVHRR_at_MAMMAL:units = "degree Celsius" ;
  SST_AVHRR_at_MAMMAL:standard_name = "sea_water_temperature" ;
  SST_AVHRR_at_MAMMAL:_FillValue = -999.f ;
float U_EKMAN_GLOBCURRENT_at_MAMMAL(N_prof) ;
  U_EKMAN_GLOBCURRENT_at_MAMMAL:long_name = "15m depth Ekman current ve-
```

```

locity: zonal component at marine mammal location" ;
    U_EKMAN_GLOBCURRENT_at_MAMMAL:units = "m s-1" ;
    U_EKMAN_GLOBCURRENT_at_MAMMAL: FillValue = -999.f ;
float V_EKMAN_GLOBCURRENT_at_MAMMAL(N_prof) ;
    V_EKMAN_GLOBCURRENT_at_MAMMAL:long_name = "15m depth Ekman current ve-
locity: meridian component at marine mammal location" ;
    V_EKMAN_GLOBCURRENT_at_MAMMAL:units = "m s-1" ;
    V_EKMAN_GLOBCURRENT_at_MAMMAL: FillValue = -999.f ;
float U_GEOSTROPHIC_GLOBCURRENT_at_MAMMAL(N_prof) ;
    U_GEOSTROPHIC_GLOBCURRENT_at_MAMMAL:long_name = "Absolute geostrophic
velocity: zonal component at marine mammal location" ;
    U_GEOSTROPHIC_GLOBCURRENT_at_MAMMAL:units = "m s-1" ;
    U_GEOSTROPHIC_GLOBCURRENT_at_MAMMAL: FillValue = -999.f ;
float V_GEOSTROPHIC_GLOBCURRENT_at_MAMMAL(N_prof) ;
    V_GEOSTROPHIC_GLOBCURRENT_at_MAMMAL:long_name = "Absolute geostrophic
velocity: meridian component at marine mammal location" ;
    V_GEOSTROPHIC_GLOBCURRENT_at_MAMMAL:units = "m s-1" ;
    V_GEOSTROPHIC_GLOBCURRENT_at_MAMMAL: FillValue = -999.f ;

// global attributes:
:Conventions = "CF-1.6" ;
:title = "Marine Mammals Match-Up Database" ;           :Satellite_product_name = "SMOS-
L2-DPGS-v662" ;
:Satellite_product_spatial_resolution = "30 km" ;
:Satellite_product_temporal_resolution = "50 min" ;
:Satellite_product_filename = "netcdf/2010/06/01/SM_REPR_MIR_OSUDP2_20100601T000131_20100601T001849_662_120_1.nc"
;

:Match-Up_spatial_window_radius_in_km = 25;
:Match-Up_temporal_window_radius_in_days = 0.5;
:start_time = "20100114T000005Z" ;
:stop_time = "20100118T235026Z" ;
:northernmost_latitude = 77.676f ;
:southernmost_latitude = -66.423f ;
:westernmost_longitude = -179.219f ;
:easternmost_longitude = 179.199f ;
:geospatial_lat_units = "degrees north" ;
:geospatial_lat_resolution = "30 km" ;
:geospatial_lon_units = "degrees east" ;
:geospatial_lon_resolution = "30 km" ;
:institution = "ESA-IFREMER-ODL" ;
:project_name = "SMOS Pilote Mission Exploitation Platfrom (Pi-MEP) for salinity" ;
:project_url = "https://pimep-project.odl.bzh" ;
:license = "Pi-MEP data use is free and open" ;
:product_version = "1.0" ;
:keywords = "Oceans > Ocean Salinity > Sea Surface Salinity" ;
:acknowledgment = "Please acknowledge the use of these data with the following statement:
These data were provided by SMOS Pilote Mission Exploitation Platfrom (Pi-MEP) for salinity"
;

:SOURCE = "netcdf/2010/06/01/SM_REPR_MIR_OSUDP2_20100601T000131_20100601T001849_662_120_1.nc" ;
    
```

```

:references = "https://pimep-project.odl.bzh" ;
:history = "Processed on 2018-04-18 using MDB-generator" ;
:date_created = "2018-04-18 17:09:30" ;
    }
    
```

## 2.5 MDB characteristics for the particular in situ/satellite pairs

### 2.5.1 Number of paired SSS data as a function of time and distance to coast

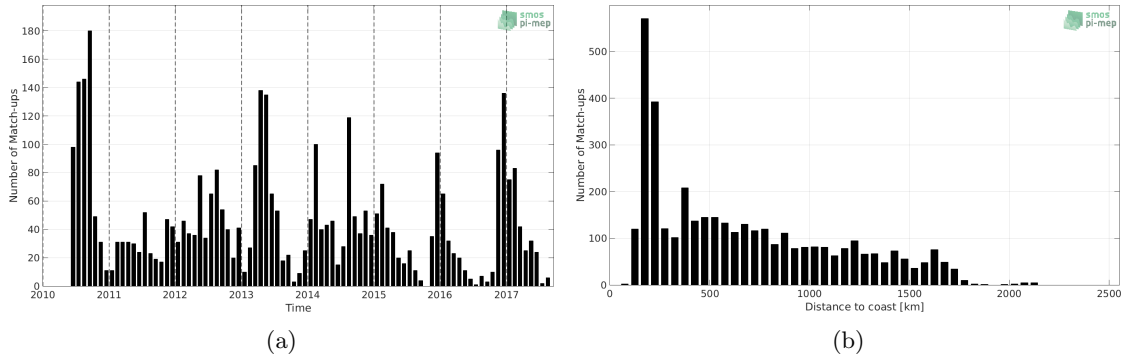


Figure 1: Number of match-ups between Sea mammals and SMOS-L2-DPGS-v662 SSS as a function of time (a) and as function of the distance to coast (b) over the Southern Ocean Pi-MEP region and for the full satellite product period.

### 2.5.2 Histograms of the SSS match-ups

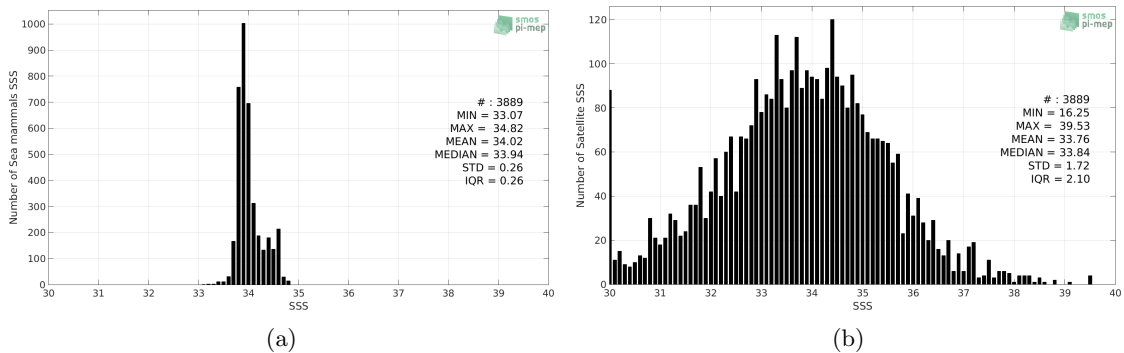


Figure 2: Histograms of SSS from Sea mammals (a) and SMOS-L2-DPGS-v662 (b) considering all match-up pairs per bins of 0.1 over the Southern Ocean Pi-MEP region and for the full satellite product period.

### 2.5.3 Distribution of in situ SSS depth measurements

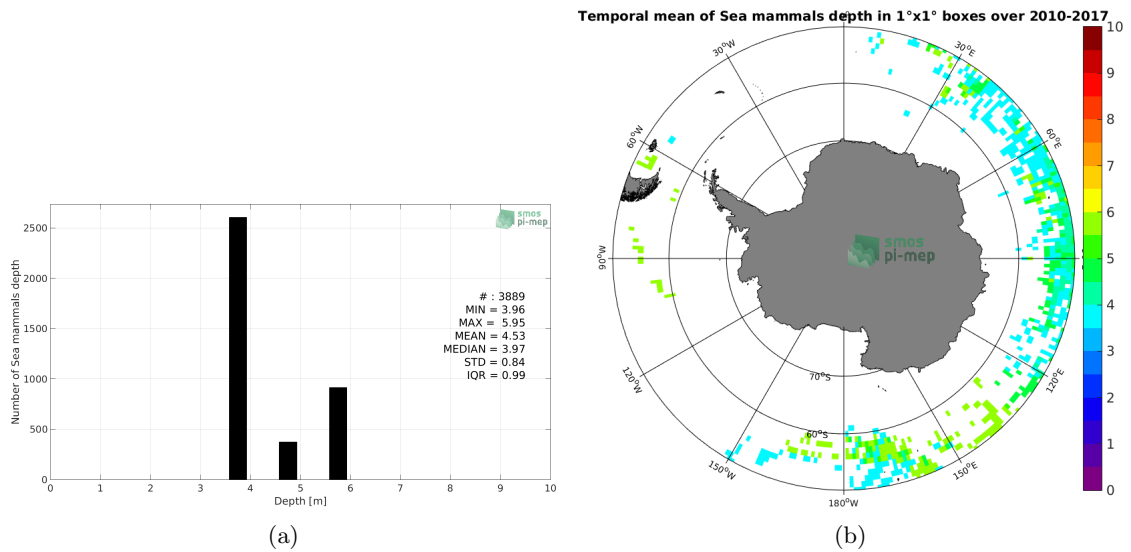


Figure 3: Histograms of the depth of the upper level SSS measurements from Sea mammals in the Match-up DataBase for the Southern Ocean Pi-MEP region (a) and temporal mean spatial distribution of pressure of the in situ SSS data over  $1^\circ \times 1^\circ$  boxes and for the full satellite product period (b).

2.5.4 Spatial Distribution of Match-ups

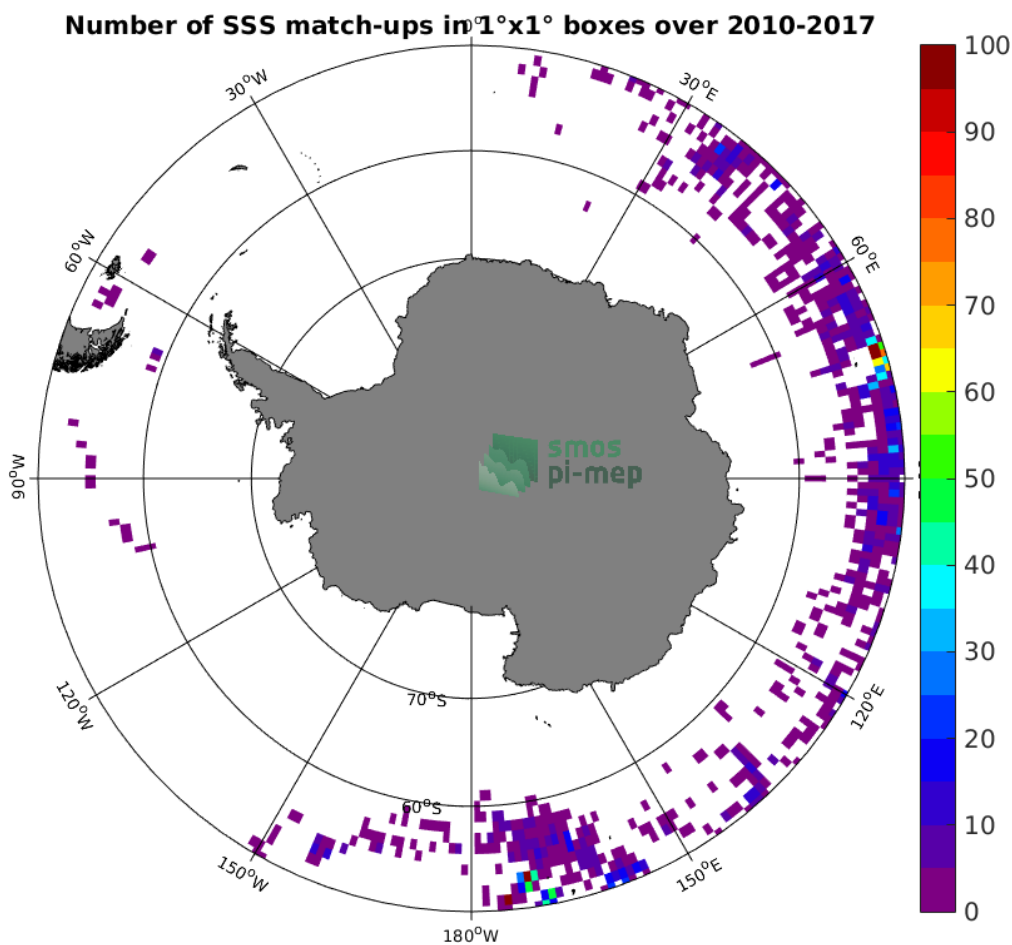


Figure 4: Number of SSS match-ups between Sea mammals SSS and the SMOS-L2-DPGS-v662 SSS product for the Southern Ocean Pi-MEP region over 1°x1° boxes and for the full satellite product period.



### 2.5.5 Histograms of the spatial and temporal lags of the match-ups pairs

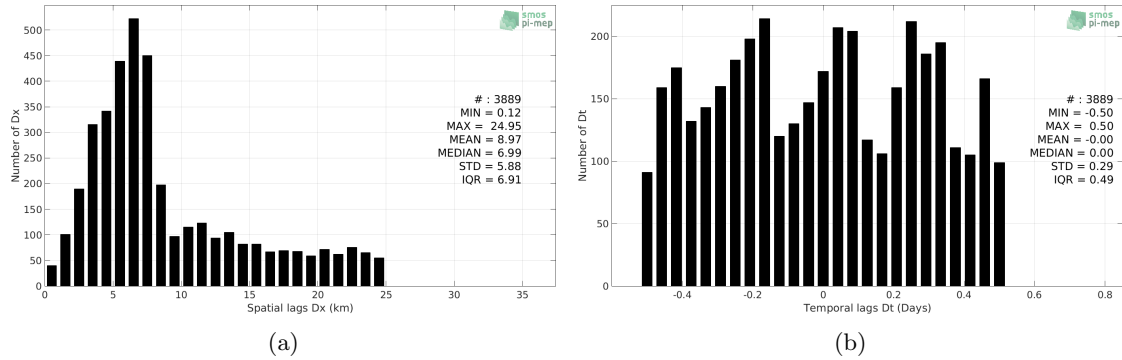


Figure 5: Histograms of the spatial (a) and temporal (b) lags between the time of the Sea mammals measurements and the date of the corresponding SMOS-L2-DPGS-v662 SSS product.

## 3 MDB file Analyses

### 3.1 Spatial Maps of the Temporal mean and Std of in situ and satellite SSS and of the difference ( $\Delta$ SSS)

In Figure 6, we show maps of temporal mean (left) and standard deviation (right) of the SMOS-L2-DPGS-v662 satellite SSS product (top) and of the Sea mammals in situ dataset at the collected Pi-MEP match-up pairs. The temporal mean and std are gridded over the full satellite product period and over spatial boxes of size  $1^\circ \times 1^\circ$ .

At the bottom of Figure 6, the temporal mean (left) and standard deviation (right) of the differences between the satellite SSS product and in situ data found at match-up pairs, namely  $\Delta$ SSS(Satellite -Sea mammals), is also gridded over the full satellite product period and over spatial boxes of size  $1^\circ \times 1^\circ$ .

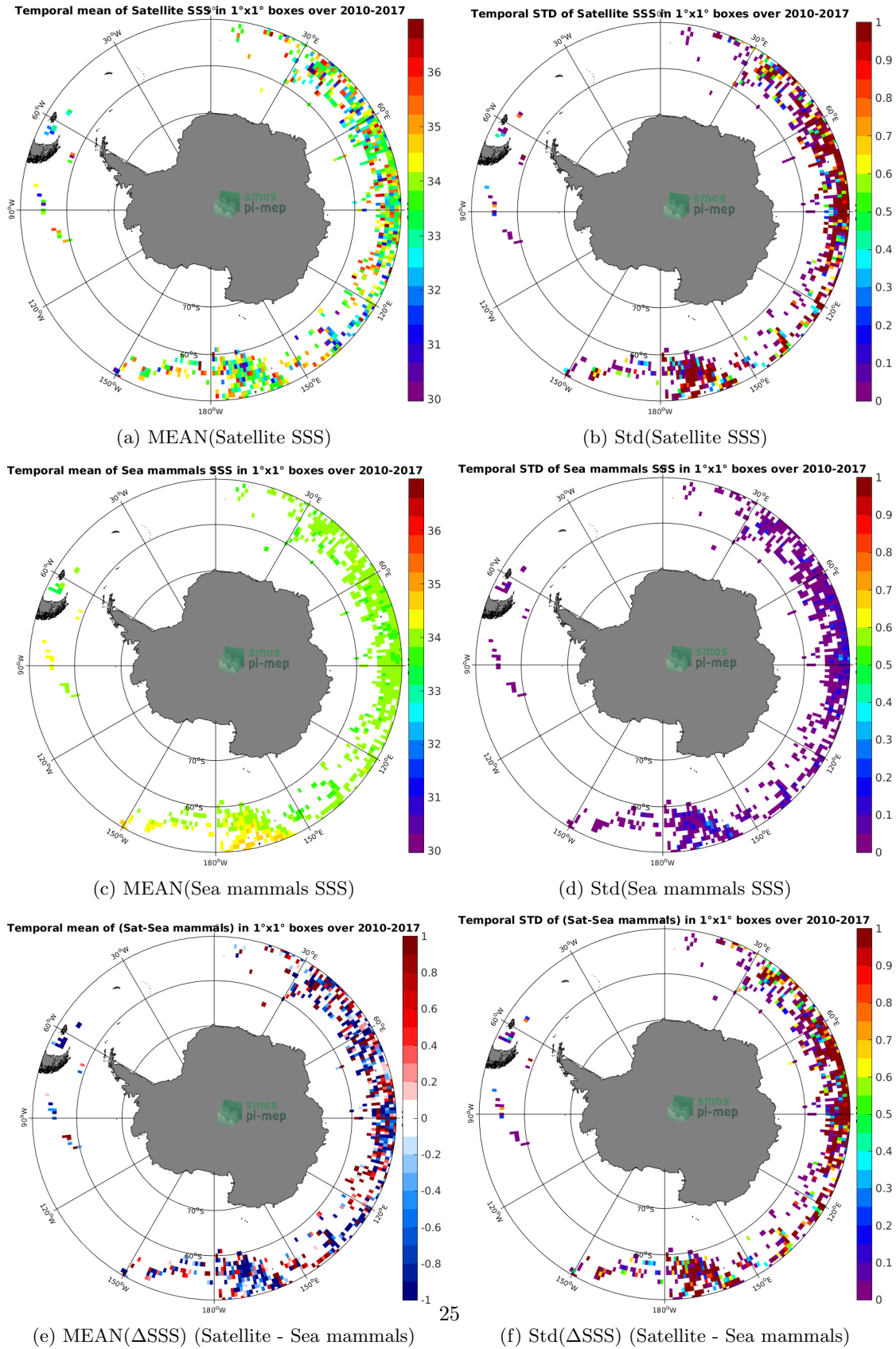


Figure 6: Temporal mean (left) and Std (right) of SSS from SMOS-L2-DPGS-v662 (top), Sea mammals (middle), and of  $\Delta$ SSS (Satellite - Sea mammals). Only match-up pairs are used to generate these maps.

### 3.2 Time series of the monthly averaged mean and Std of in situ and satellite SSS and of the ( $\Delta$ SSS)

In the top panel of Figure 7, we show the time series of the monthly averaged SSS estimated over the full Southern Ocean Pi-MEP region for both SMOS-L2-DPGS-v662 satellite SSS product (in black) and the Sea mammals in situ dataset (in blue) at the collected Pi-MEP match-up pairs.

In the middle panel of Figure 7, we show the time series of the monthly averaged  $\Delta$ SSS (Satellite - Sea mammals) for the collected Pi-MEP match-up pairs and estimated over the full Southern Ocean Pi-MEP region.

In the bottom panel of Figure 7, we show the time series of the monthly averaged standard deviation of the  $\Delta$ SSS (Satellite - Sea mammals) for the collected Pi-MEP match-up pairs and estimated over the full Southern Ocean Pi-MEP region.

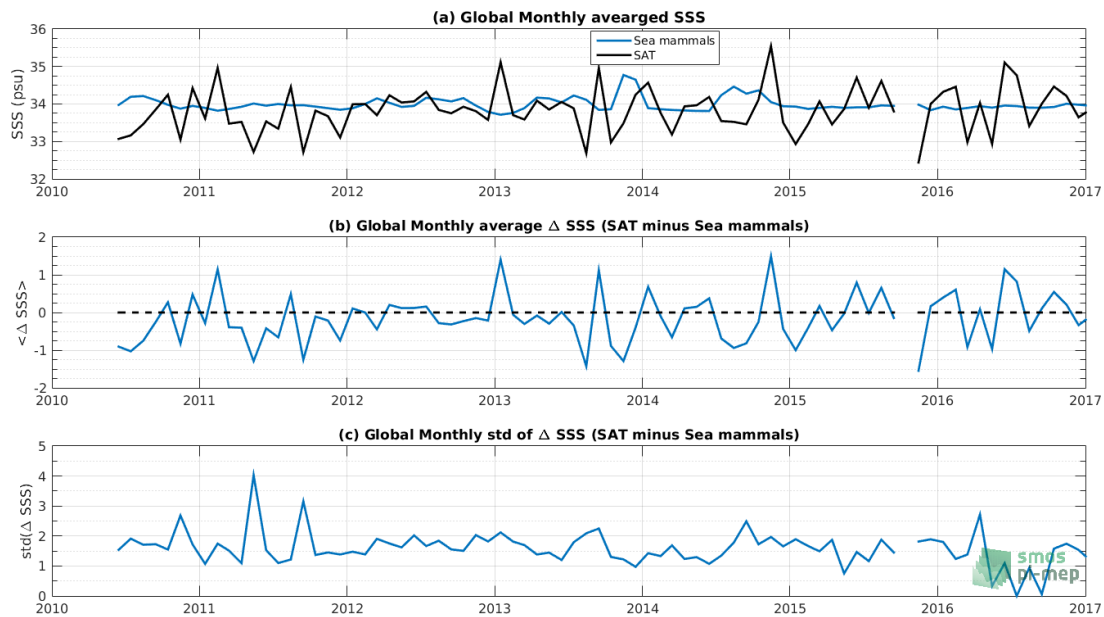


Figure 7: Time series of the monthly averaged mean SSS (top), mean  $\Delta$ SSS (Satellite - Sea mammals) and Std of  $\Delta$ SSS (Satellite - Sea mammals) over the Southern Ocean Pi-MEP region considering all match-ups collected by the Pi-MEP platform.

### 3.3 Zonally-averaged Time-mean and temporal Std of in situ and satellite SSS and of the $\Delta$ SSS

In Figure 8 left panel, we show the zonally averaged time-mean SSS estimated at the collected Pi-MEP match-up pairs for both SMOS-L2-DPGS-v662 satellite SSS product (in black) and the Sea mammals in situ dataset (in blue). The time mean is evaluated over the full satellite SSS product period.

In the right panel of Figure 8, we show the zonally averaged time-mean  $\Delta$ SSS (Satellite - Sea mammals) for all the collected Pi-MEP match-up pairs estimated over the full satellite product period.

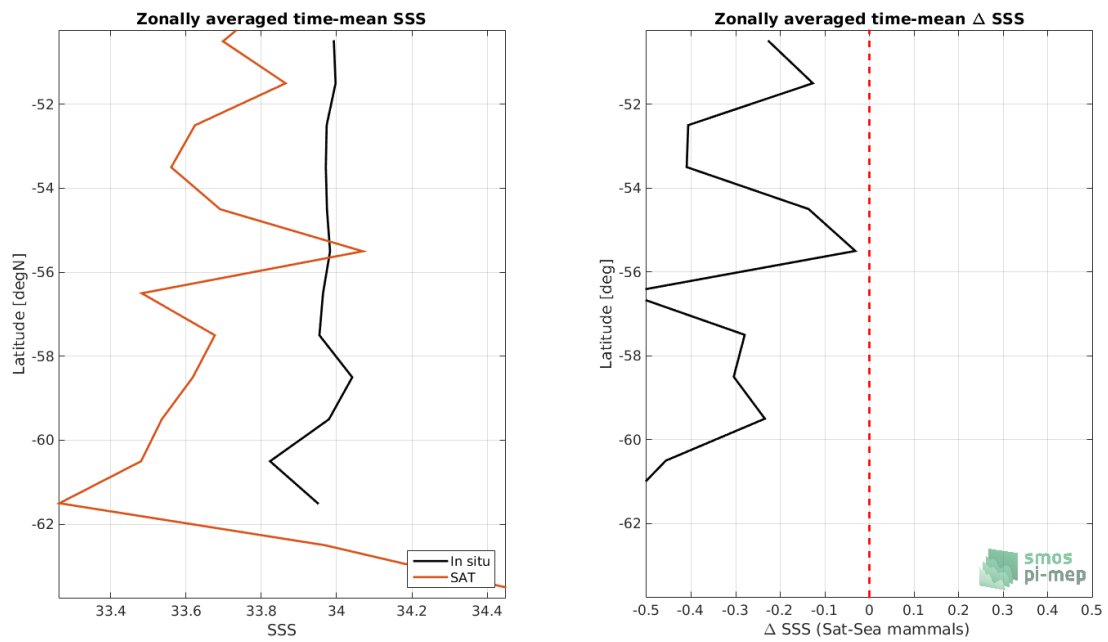


Figure 8: Left panel: Zonally averaged time mean SSS from SMOS-L2-DPGS-v662 (black) and from Sea mammals (blue). Right panel: zonally averaged time-mean  $\Delta$ SSS (Satellite - Sea mammals) for all the collected Pi-MEP match-up pairs estimated over the full satellite product period.

### 3.4 Scatterplots of satellite vs in situ SSS by latitudinal bands

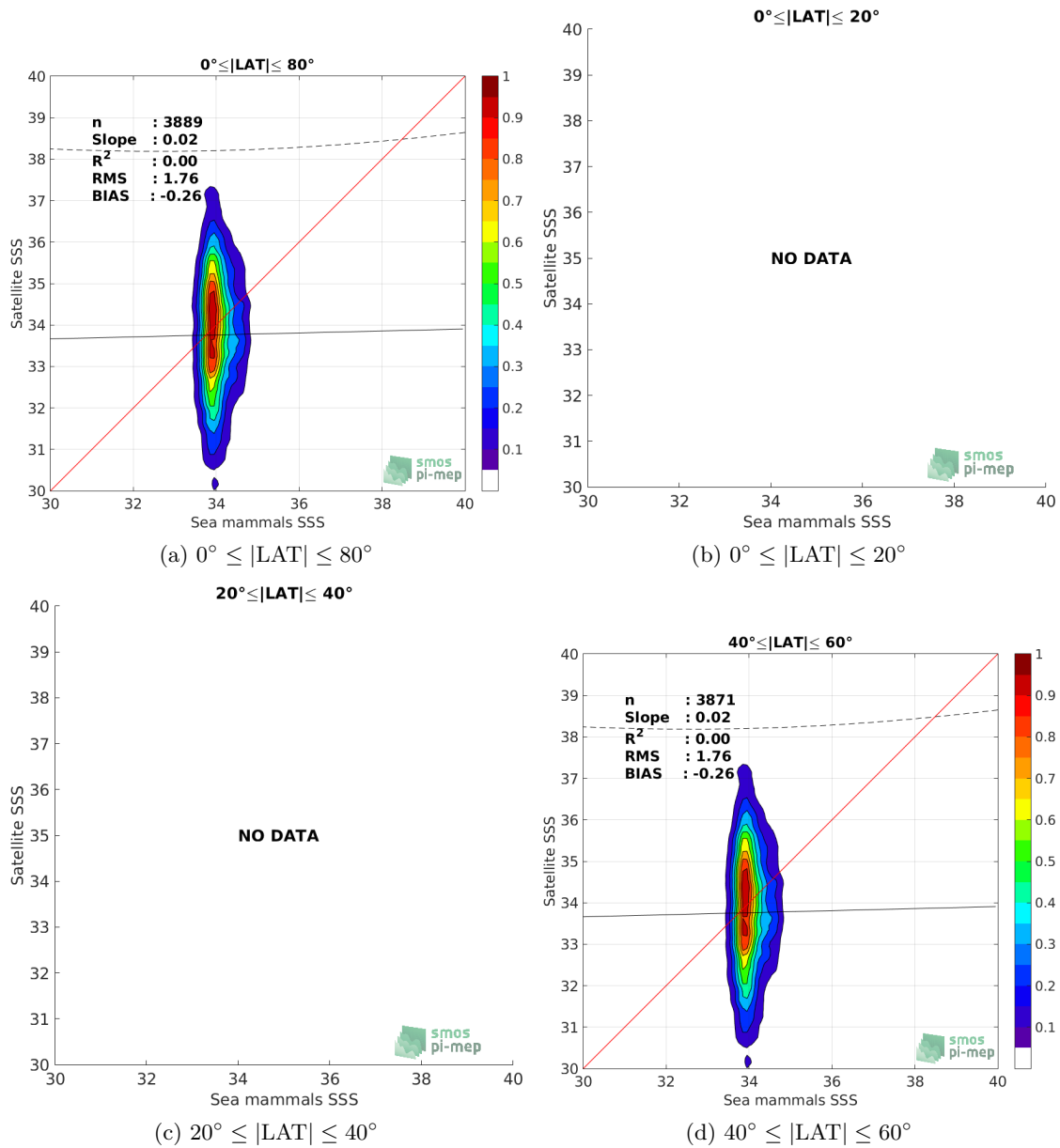


Figure 9: Contour maps of the concentration of SMOS-L2-DPGS-v662 SSS (y-axis) versus Sea mammals SSS (x-axis) at match-up pairs for different latitude bands. For each plot, the red line shows  $x=y$ . The black thin and dashed lines indicate a linear fit through the data cloud and the  $\pm 95\%$  confidence levels, respectively. The number match-up pairs  $n$ , the slope and  $R^2$  coefficient of the linear fit, the root mean square (RMS) and the mean bias between satellite and in situ data are indicated for each latitude band in each plots.

### 3.5 Time series of the monthly averaged mean and Std of the $\Delta$ SSS sorted by latitudinal bands

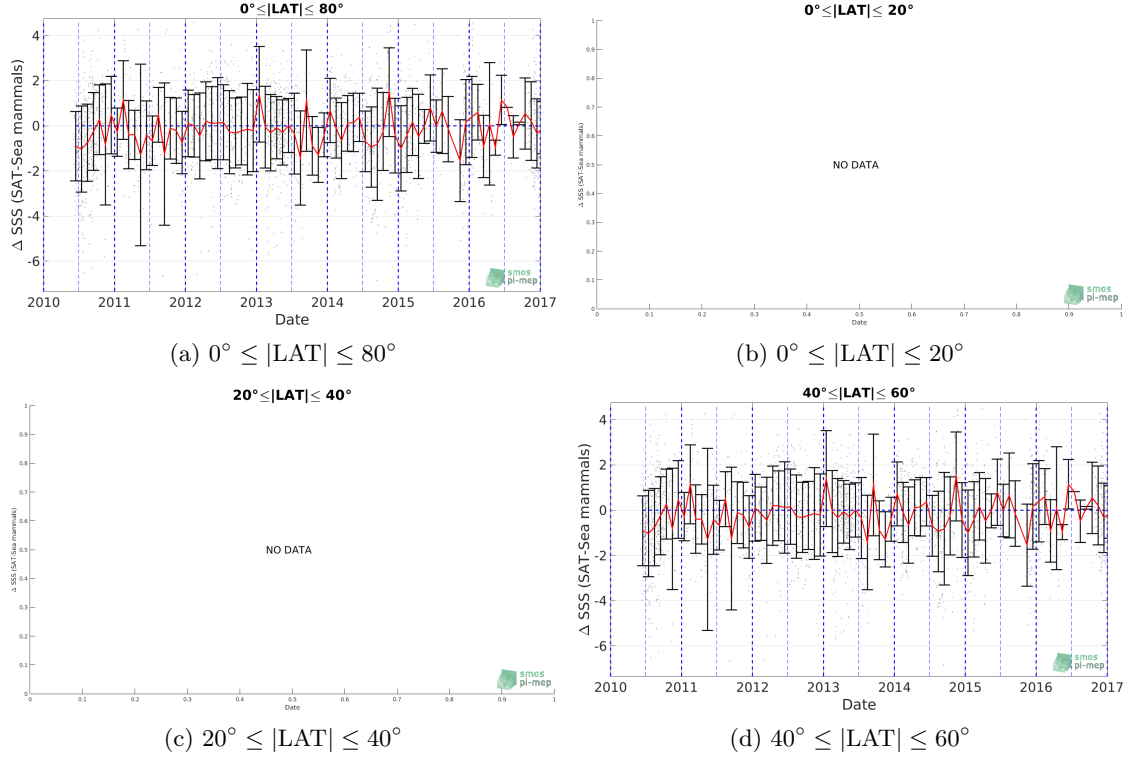


Figure 10: Monthly-average mean (red curves)  $\Delta$ SSS (Satellite - Sea mammals) and  $\pm 1$  Std (black vertical thick bars) as function of time for all the collected Pi-MEP match-up pairs estimated over the Southern Ocean Pi-MEP region and for the full satellite product period are shown for different latitude bands: (a) Latitude band  $80^\circ\text{S}-80^\circ\text{N}$ , (b) latitude band  $20^\circ\text{S}-20^\circ\text{N}$ , (c) Mid Latitude bands  $40^\circ\text{S}-20^\circ\text{S}$  and  $20^\circ\text{N}-40^\circ\text{N}$  and (d) Latitude bands  $60^\circ\text{S}-40^\circ\text{S}$  and  $40^\circ\text{N}-60^\circ\text{N}$ .

### 3.6 $\Delta$ SSS sorted as function of geophysical parameters

In Figure 11, we classify the match-up differences  $\Delta$ SSS (Satellite - in situ) between SMOS-L2-DPGS-v662 and Sea mammals SSS as function of the geophysical conditions at match-up points. The mean and std of  $\Delta$ SSS (Satellite - Sea mammals) is thus evaluated as function of the

- in situ SSS values per bins of width 0.2,
- in situ SST values per bins of width  $1^\circ\text{C}$ ,
- ASCAT daily wind values per bins of width 1 m/s,
- CMORPH 3-hourly rain rates per bins of width 1 mm/h, and,
- distance to coasts per bins of width 50 km.

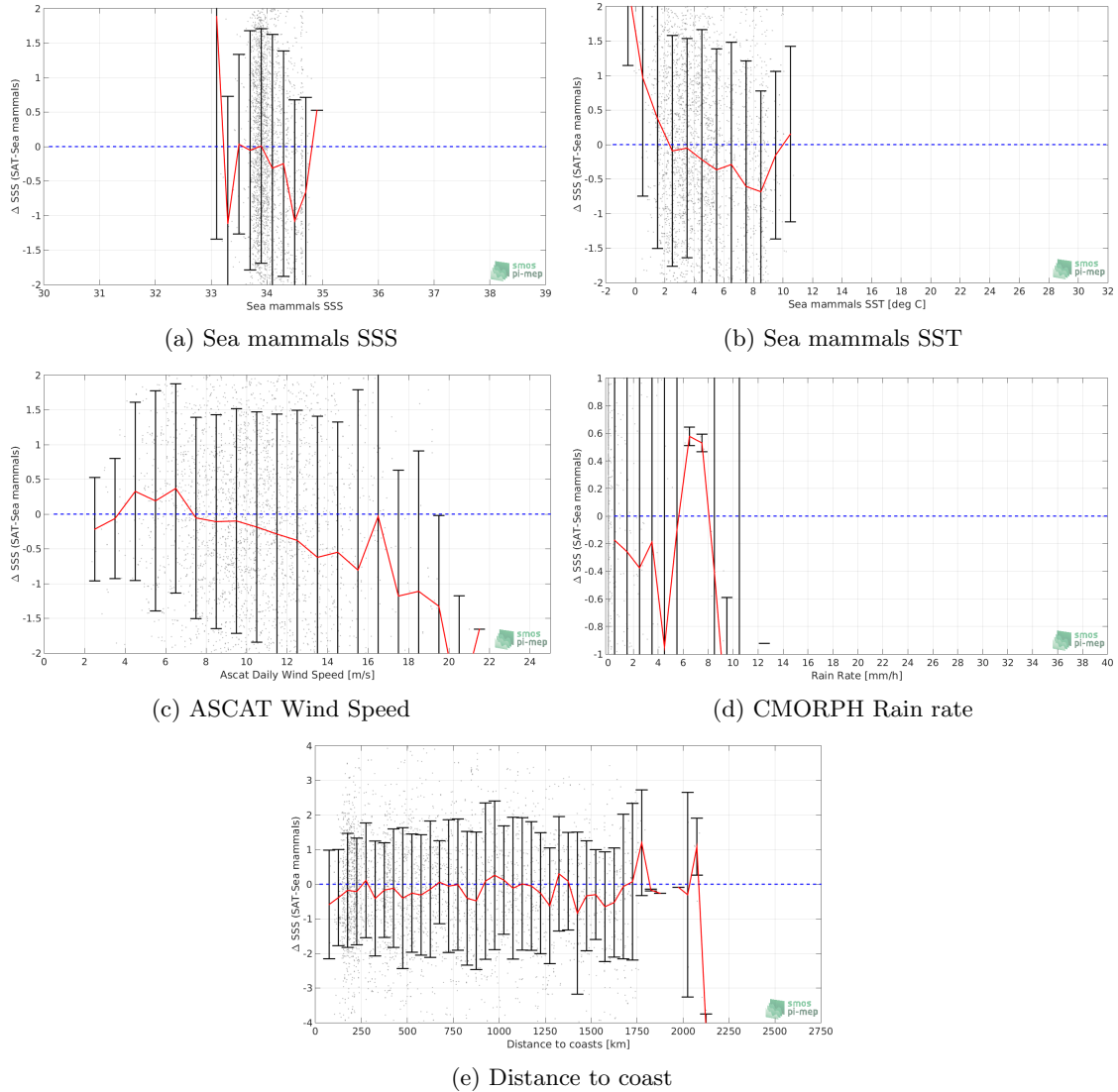


Figure 11:  $\Delta SSS$  (Satellite - Sea mammals) sorted as function of Sea mammals SSS values a), Sea mammals SST b), ASCAT Wind speed c), CMORPH rain rate d) and distance to coast (e). In all plots the mean and Std of  $\Delta SSS$  for each bin is indicated by the red curves and black vertical thick bars ( $\pm 1$  Std)

### 3.7 $\Delta SSS$ maps and statistics for different geophysical conditions

In Figures 12 and 13, we focus on sub-datasets of the match-up differences  $\Delta SSS$  (Satellite - in situ) between SMOS-L2-DPGS-v662 and Sea mammals for the following specific geophysical conditions:

- **C1**: if the local value at in situ location of estimated rain rate is zero, mean daily wind is in the range [3, 12] m/s, the SST is  $> 5^\circ\text{C}$  and distance to coast is  $> 800$  km.
- **C2**: if the local value at in situ location of estimated rain rate is zero, mean daily wind is

in the range [3, 12] m/s.

- **C3**:if the local value at in situ location of estimated rain rate is high (ie.  $> 1$  mm/h) and mean daily wind is low (ie.  $< 4$  m/s).
- **C4**:if the mixed layer is shallow with depth  $< 20$ m.
- **C5**:if the in situ data is located where the climatological SSS standard deviation is low (ie. above  $< 0.2$ ).
- **C6**:if the in situ data is located where the climatological SSS standard deviation is high (ie. above  $> 0.2$ ).

For each of these conditions, the temporal mean (gridded over spatial boxes of size  $1^\circ \times 1^\circ$ ) and the histogram of the difference  $\Delta$ SSS (Satellite - in situ) are presented.

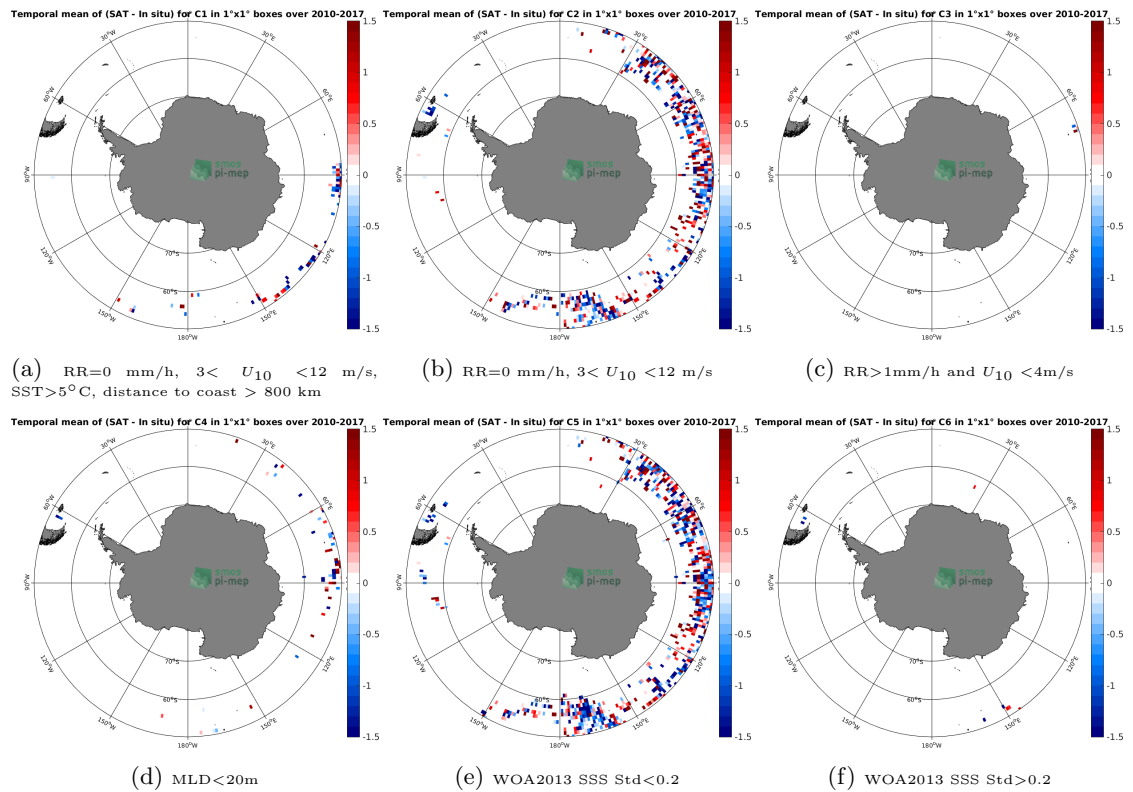


Figure 12: Temporal mean gridded over spatial boxes of size  $1^\circ \times 1^\circ$  of  $\Delta$ SSS (SMOS-L2-DPGS-v662 - Sea mammals) for 6 different subdatasets corresponding to:RR=0 mm/h,  $3 < U_{10} < 12$  m/s, SST $>5^\circ$ C, distance to coast  $> 800$  km (a), RR=0 mm/h,  $3 < U_{10} < 12$  m/s (b), RR $>1$ mm/h and  $U_{10} < 4$ m/s (c),MLD $<20$ m (d),WOA2013 SSS Std $<0.2$  (e),WOA2013 SSS Std $>0.2$  (f).



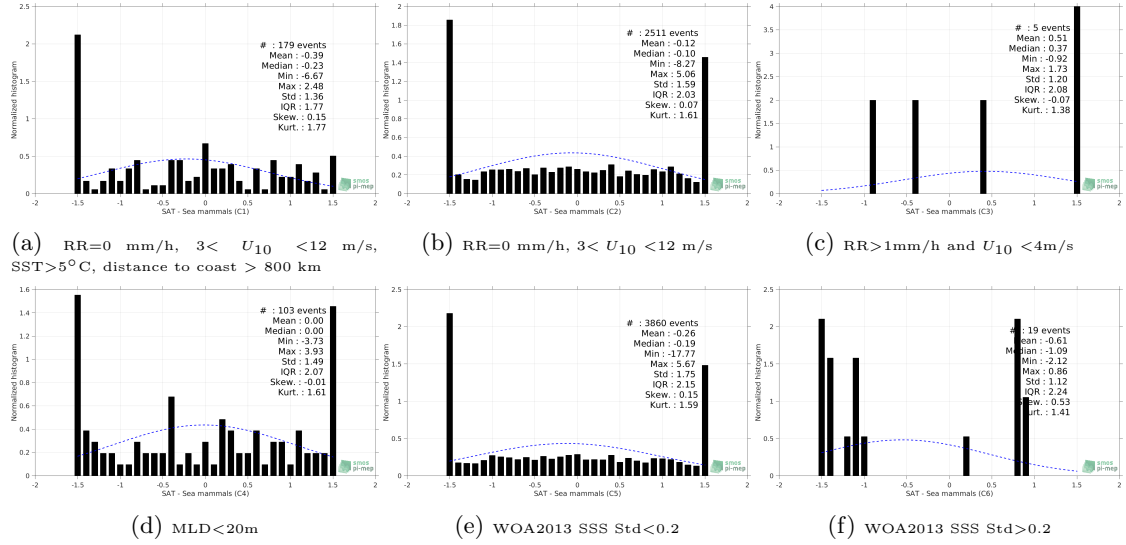


Figure 13: Normalized histogram of  $\Delta$ SSS (SMOS-L2-DPGS-v662 - Sea mammals) for 6 different subdatasets corresponding to: RR=0 mm/h,  $3 < U_{10} < 12$  m/s, SST>5°C, distance to coast > 800 km (a), RR=0 mm/h,  $3 < U_{10} < 12$  m/s (b), RR>1mm/h and  $U_{10} < 4$ m/s (c), MLD<20m (d), WOA2013 SSS Std<0.2 (e), WOA2013 SSS Std>0.2 (f).

## 4 Summary

Table 1 shows the mean, median, standard deviation (Std), root mean square (RMS), interquartile range (IQR), correlation coefficient ( $r^2$ ) and robust standard deviation (Std\*) of the match-up differences  $\Delta$ SSS (Satellite - in situ) between SMOS-L2-DPGS-v662 and Sea mammals derived over the Southern Ocean Pi-MEP region and for the full satellite product period and for the following conditions:

- all: All the match-up pairs satellite/in situ SSS are used to derive the statistics
- C1: only pairs where RR=0 mm/h,  $3 < U_{10} < 12$  m/s, SST>5°C, distance to coast > 800 km
- C2: only pairs where RR=0 mm/h,  $3 < U_{10} < 12$  m/s
- C3: only pairs where RR>1mm/h and  $U_{10} < 4$ m/s
- C4: only pairs where MLD<20m
- C5: only pairs where WOA2013 SSS Std<0.2
- C6: only pairs at WOA2013 SSS Std>0.2
- C7a: only pairs where distance to coast is < 150 km.
- C7b: only pairs where distance to coast is in the range [150, 800] km.
- C7c: only pairs where distance to coast is > 800 km.
- C8a: only pairs where in situ SST is < 5°C.

- C8b: only pairs where in situ SST is in the range  $[5, 15]^{\circ}\text{C}$ .
- C8c: only pairs where in situ SST is  $> 15^{\circ}\text{C}$ .
- C9a: only pairs where in situ SSS is  $< 33$ .
- C9b: only pairs where in situ SSS is in the range  $[33, 37]$ .
- C9c: only pairs where in situ SSS is  $> 37$ .

**Table 1: Statistics of  $\Delta\text{SSS}$  (Satellite - Sea mammals)**

Condition	#	Median	Mean	Std	RMS	IQR	$r^2$	Std*
all	3889	-0.20	-0.26	1.74	1.76	2.15	0.00	1.60
C1	179	-0.23	-0.39	1.36	1.41	1.77	0.00	1.37
C2	2511	-0.10	-0.12	1.59	1.60	2.03	0.00	1.51
C3	5	0.37	0.51	1.20	1.19	2.08	0.02	1.93
C4	103	0.00	0.00	1.49	1.48	2.07	0.06	1.58
C5	3860	-0.19	-0.26	1.75	1.76	2.15	0.00	1.61
C6	19	-1.09	-0.61	1.12	1.25	2.24	0.00	0.97
C7a	122	-0.39	-0.49	1.39	1.46	1.45	0.00	1.08
C7b	2432	-0.15	-0.23	1.67	1.69	2.15	0.00	1.60
C7c	1335	-0.23	-0.29	1.89	1.91	2.29	0.00	1.71
C8a	2576	-0.04	-0.07	1.75	1.75	2.17	0.00	1.63
C8b	1313	-0.50	-0.63	1.66	1.78	1.96	0.00	1.49
C8c	0	NaN	NaN	NaN	NaN	NaN	NaN	NaN
C9a	0	NaN	NaN	NaN	NaN	NaN	NaN	NaN
C9b	3889	-0.20	-0.26	1.74	1.76	2.15	0.00	1.60
C9c	0	NaN	NaN	NaN	NaN	NaN	NaN	NaN

For the same conditions, Table 2 presents statistics of  $\Delta\text{SSS}$  (Satellite - ISAS). Only ISAS SSS values with  $\text{PCTVAR} < 80\%$  are used to derive the statistics.

**Table 2: Statistics of  $\Delta\text{SSS}$  (Satellite - ISAS)**

Condition	#	Median	Mean	Std	RMS	IQR	$r^2$	Std*
all	3826	-0.19	-0.25	1.74	1.75	2.14	0.00	1.60
C1	179	-0.16	-0.39	1.35	1.40	1.76	0.00	1.35
C2	2467	-0.08	-0.11	1.59	1.59	2.03	0.00	1.51
C3	5	0.40	0.48	1.19	1.17	2.14	0.00	1.92
C4	100	0.09	0.03	1.51	1.51	2.11	0.04	1.55
C5	3797	-0.17	-0.25	1.74	1.76	2.15	0.00	1.61
C6	19	-1.06	-0.64	1.04	1.20	2.04	0.05	0.96
C7a	122	-0.39	-0.46	1.39	1.46	1.53	0.00	1.11
C7b	2405	-0.15	-0.22	1.67	1.69	2.17	0.00	1.62
C7c	1299	-0.20	-0.29	1.88	1.90	2.21	0.00	1.65
C8a	2520	-0.03	-0.08	1.75	1.75	2.20	0.00	1.64
C8b	1306	-0.45	-0.59	1.66	1.76	1.98	0.01	1.50
C8c	0	NaN	NaN	NaN	NaN	NaN	NaN	NaN
C9a	0	NaN	NaN	NaN	NaN	NaN	NaN	NaN
C9b	3826	-0.19	-0.25	1.74	1.75	2.14	0.00	1.60
C9c	0	NaN	NaN	NaN	NaN	NaN	NaN	NaN

Numerical values can be downloaded as csv files for [Table 1](#) and [Table 2](#).

## References

- Abderrahim Bentamy and Denis Croize Fillon. Gridded surface wind fields from Metop/ASCAT measurements. *Int. J. Remote Sens.*, 33(6):1729–1754, March 2012. ISSN 1366-5901. doi: [10.1080/01431161.2011.600348](https://doi.org/10.1080/01431161.2011.600348).
- Abderrahim Bentamy, Semyon A. Grodsky, James A. Carton, Denis Croizé-Fillon, and Bertrand Chapron. Matching ASCAT and QuikSCAT winds. *J. Geophys. Res.*, 117(C2), February 2012. ISSN 0148-0227. doi: [10.1029/2011JC007479](https://doi.org/10.1029/2011JC007479). C02011.
- Jaqueline Boutin, Y. Chao, W. E. Asher, T. Delcroix, R. Drucker, K. Drushka, N. Kolodziejczyk, T. Lee, N. Reul, G. Reverdin, J. Schanze, A. Soloviev, L. Yu, J. Anderson, L. Brucker, E. Dinnat, A. S. Garcia, W. L. Jones, C. Maes, T. Meissner, W. Tang, N. Vinogradova, and B. Ward. Satellite and In Situ Salinity: Understanding Near-Surface Stratification and Sub-footprint Variability. *Bull. Am. Meteorol. Soc.*, 97(8):1391–1407, 2016. ISSN 1520-0477. doi: [10.1175/bams-d-15-00032.1](https://doi.org/10.1175/bams-d-15-00032.1).
- Clément de Boyer Montégut, Gurvan Madec, A. S. Fischer, A. Lazar, and D. Ludicone. Mixed layer depth over the global ocean: An examination of profile data and a profile-based climatology. *J. Geophys. Res.*, 109(C12):C12003, December 2004. ISSN 0148-0227. doi: [10.1029/2004jc002378](https://doi.org/10.1029/2004jc002378).
- Clément de Boyer Montégut, Juliette Mignot, Alban Lazar, and Sophie Cravatte. Control of salinity on the mixed layer depth in the world ocean: 1. General description. *J. Geophys. Res.*, 112(C6):C06011, June 2007. ISSN 0148-0227. doi: [10.1029/2006jc003953](https://doi.org/10.1029/2006jc003953).
- Ralph R. Ferraro. SSM/I derived global rainfall estimates for climatological applications. *J. Geophys. Res.*, 1021:16715–16736, 07 1997. doi: [10.1029/97JD01210](https://doi.org/10.1029/97JD01210).
- Ralph R. Ferraro, Fuzhong Weng, Norman C. Grody, and Limin Zhao. Precipitation characteristics over land from the NOAA-15 AMSU sensor. *Geophys. Res. Lett.*, 27(17):2669–2672, 2000. doi: [10.1029/2000GL011665](https://doi.org/10.1029/2000GL011665).
- Fabienne Gaillard, E. Autret, V. Thierry, P. Galaup, C. Coatanoan, and T. Loubrieu. Quality Control of Large Argo Datasets. *J. Atmos. Oceanic Technol.*, 26(2):337–351, 2012/10/10 2009. doi: [10.1175/2008JTECHO552.1](https://doi.org/10.1175/2008JTECHO552.1).
- Fabienne Gaillard, Thierry Reynaud, Virginie Thierry, Nicolas Kolodziejczyk, and Karina von Schuckmann. In Situ-Based Reanalysis of the Global Ocean Temperature and Salinity with ISAS: Variability of the Heat Content and Steric Height. *J. Clim.*, 29(4):1305–1323, February 2016. ISSN 1520-0442. doi: [10.1175/jcli-d-15-0028.1](https://doi.org/10.1175/jcli-d-15-0028.1).
- Robert J. Joyce, John E. Janowiak, Phillip A. Arkin, and Pingping Xie. CMORPH: A Method that Produces Global Precipitation Estimates from Passive Microwave and Infrared Data at High Spatial and Temporal Resolution. *J. Hydrometeorol.*, 5(3):487–503, June 2004. ISSN 1525-7541. doi: [10.1175/1525-7541\(2004\)005<0487:camtpg>2.0.co;2](https://doi.org/10.1175/1525-7541(2004)005<0487:camtpg>2.0.co;2).
- Nicolas Kolodziejczyk, Gilles Reverdin, and Alban Lazar. Interannual Variability of the Mixed Layer Winter Convection and Spice Injection in the Eastern Subtropical North Atlantic. *J. Phys. Oceanogr.*, 45(2):504–525, Feb 2015. ISSN 1520-0485. doi: [10.1175/jpo-d-14-0042.1](https://doi.org/10.1175/jpo-d-14-0042.1).
- Christian Kummerow, Y. Hong, W. S. Olson, S. Yang, R. F. Adler, J. McCollum, R. Ferraro, G. Petty, D-B. Shin, and T. T. Wilheit. The Evolution of the Goddard Profiling Algorithm

(GPROF) for Rainfall Estimation from Passive Microwave Sensors. *J. Appl. Meteorol.*, 40(11): 1801–1820, 2001. doi: [10.1175/1520-0450\(2001\)040<1801:TEOTGP>2.0.CO;2](https://doi.org/10.1175/1520-0450(2001)040<1801:TEOTGP>2.0.CO;2).

Fabien Roquet, Christophe Guinet, Jean-Benoit Charrassin, Daniel P. Costa, Kit M Kovacs, Christian Lydersen, Horst Bornemann, Marthan N. Bester, Monica C. Muelbert, Mark A. Hindell, Clive R. McMahon, Rob Harcourt, Lars Boehme, and Mike A. Fedak. MEOP-CTD in-situ data collection: a Southern ocean Marine-mammals calibrated sea water temperatures and salinities observations, 2018. doi: [10.17882/45461](https://doi.org/10.17882/45461).

Anne Treasure, Fabien Roquet, Isabelle Ansoerge, Marthán Bester, Lars Boehme, Horst Bornemann, Jean-Benoît Charrassin, Damien Chevallier, Daniel Costa, Mike Fedak, Christophe Guinet, Mike Hammill, Robert Harcourt, Mark Hindell, Kit Kovacs, Mary-Anne Lea, Phil Lovell, Andrew Lowther, Christian Lydersen, Trevor McIntyre, Clive McMahon, Mônica Muelbert, Keith Nicholls, Baptiste Picard, Gilles Reverdin, Andrew Trites, Guy Williams, and P.J. Nico de Bruyn. Marine Mammals Exploring the Oceans Pole to Pole: A Review of the MEOP Consortium. *Oceanography*, 30(2):132–138, jun 2017. doi: [10.5670/oceanog.2017.234](https://doi.org/10.5670/oceanog.2017.234).