



Match-up database Analyses Report

Aquarius SSS L3 OR v5 - Monthly - Rain mask
(NASA-GSFC)

TSG (GOSUD-Sailing-ship)

Mid-Low Latitudes 45N-45S

prepared by the Pi-MEP Consortium

June 15, 2023

Contents

1	Overview	6
2	The MDB file datasets	7
2.1	Satellite SSS product	7
2.1.1	Aquarius SSS L3 OR v5 - Monthly - Rain mask (NASA-GSFC)	7
2.2	<i>In situ</i> SSS dataset	7
2.3	Auxiliary geophysical datasets	7
2.3.1	CMORPH	8
2.3.2	ASCAT	9
2.3.3	ISAS	9
2.3.4	World Ocean Atlas Climatology	10
2.4	Overview of the Match-ups generation method	10
2.4.1	<i>In situ</i> /Satellite data filtering	10
2.4.2	<i>In situ</i> /Satellite Co-localization	10
2.4.3	MDB pair Co-localization with auxiliary data and complementary information	11
2.4.4	Content of the Match-Up NetCDF files	12
2.5	MDB characteristics for each specific <i>in situ</i> /satellite pair	12
2.5.1	Number of paired SSS data as a function of time and distance to coast	12
2.5.2	Histograms of the SSS match-ups	13
2.5.3	Distribution of <i>in situ</i> SSS depth measurements	13
2.5.4	Spatial Distribution of Match-ups	13
2.5.5	Histograms of the spatial and temporal lags of the match-ups pairs	14
3	MDB file Analyses	14
3.1	Spatial Maps of the Temporal mean and Std of <i>in situ</i> and satellite SSS and of their difference (Δ SSS)	14
3.2	Time series of the monthly median and Std of <i>in situ</i> and satellite SSS and of their difference (Δ SSS)	15
3.3	Zonal mean and Std of <i>in situ</i> and satellite SSS and of the difference (Δ SSS)	16
3.4	Scatterplots of satellite vs <i>in situ</i> SSS by latitudinal bands	17
3.5	Time series of the monthly median and Std of Δ SSS sorted by latitudinal bands	18
3.6	Δ SSS sorted as function of geophysical parameters	19
3.7	Δ SSS maps and statistics for different geophysical conditions	20
4	Summary	22
5	More Comparison/Validation Materials	24
5.1	Comparisons with other satellite products	24
5.2	Statistics derived for the different <i>in situ</i> databases	26

List of Figures

1	Number of match-ups between TSG (GOSUD-Sailing-ship) and Aquarius SSS L3 OR v5 - Monthly - Rain mask (NASA-GSFC) SSS as a function of time (a) and as function of the distance to coast (b) over the Mid-Low Latitudes 45N-45S Pi-MEP region and for the full satellite product period.	12
---	---	----

2	Histograms of SSS from TSG (GOSUD-Sailing-ship) (a) and Aquarius SSS L3 OR v5 - Monthly - Rain mask (NASA-GSFC) (b) considering all match-up pairs per bins of 0.1 over the Mid-Low Latitudes 45N-45S Pi-MEP region and for the full satellite product period.	13
3	Histograms of the depth of the upper level SSS measurements from TSG (GOSUD-Sailing-ship) in the Match-up DataBase for the Mid-Low Latitudes 45N-45S Pi-MEP region (a) and temporal mean spatial distribution of pressure of the <i>in situ</i> SSS data over $1^\circ \times 1^\circ$ boxes and for the full satellite product period (b).	13
4	Number of SSS match-ups between TSG (GOSUD-Sailing-ship) SSS and the Aquarius SSS L3 OR v5 - Monthly - Rain mask (NASA-GSFC) SSS product for the Mid-Low Latitudes 45N-45S Pi-MEP region over $1^\circ \times 1^\circ$ boxes and for the full satellite product period.	14
5	Histograms of the spatial (a) and temporal (b) lags between the location/time of the TSG (GOSUD-Sailing-ship) measurement and the date of the corresponding Aquarius SSS L3 OR v5 - Monthly - Rain mask (NASA-GSFC) SSS pixel.	14
6	Temporal mean (left) and Std (right) of SSS from Aquarius SSS L3 OR v5 - Monthly - Rain mask (NASA-GSFC) (top), TSG (GOSUD-Sailing-ship) (middle), and of Δ SSS (Satellite - TSG (GOSUD-Sailing-ship)). Only match-up pairs are used to generate these maps.	15
7	Time series of the monthly median SSS (top), median of Δ SSS (Satellite - TSG (GOSUD-Sailing-ship)) and Std of Δ SSS (Satellite - TSG (GOSUD-Sailing-ship)) over the Mid-Low Latitudes 45N-45S Pi-MEP region considering all match-ups collected by the Pi-MEP.	16
8	Left panel: Zonal mean SSS from Aquarius SSS L3 OR v5 - Monthly - Rain mask (NASA-GSFC) satellite product (black) and from TSG (GOSUD-Sailing-ship) (blue). Right panel: Zonal mean of Δ SSS (Satellite - TSG (GOSUD-Sailing-ship)) for all the collected Pi-MEP match-up pairs estimated over the full satellite product period.	17
9	Contour maps of the concentration of Aquarius SSS L3 OR v5 - Monthly - Rain mask (NASA-GSFC) SSS (y-axis) versus TSG (GOSUD-Sailing-ship) SSS (x-axis) at match-up pairs for different latitude bands. For each plot, the red line shows $x=y$. The black thin and dashed lines indicate a linear fit through the data cloud and the $\pm 95\%$ confidence levels, respectively. The number match-up pairs n , the slope and R^2 coefficient of the linear fit, the root mean square (RMS) and the mean bias between satellite and <i>in situ</i> data are indicated for each latitude band in each plots.	18
10	Monthly median (red curves) of Δ SSS (Satellite - TSG (GOSUD-Sailing-ship)) and ± 1 Std (black vertical thick bars) as function of time for all the collected Pi-MEP match-up pairs estimated over the Mid-Low Latitudes 45N-45S Pi-MEP region and for the full satellite product period are shown for different latitude bands: (a) $80^\circ\text{S}-80^\circ\text{N}$, (b) $20^\circ\text{S}-20^\circ\text{N}$, (c) $40^\circ\text{S}-20^\circ\text{S}$ and $20^\circ\text{N}-40^\circ\text{N}$ and (d) $60^\circ\text{S}-40^\circ\text{S}$ and $40^\circ\text{N}-60^\circ\text{N}$	19
11	Δ SSS (Satellite - TSG (GOSUD-Sailing-ship)) sorted as function of TSG (GOSUD-Sailing-ship) SSS values a), TSG (GOSUD-Sailing-ship) SST b), ASCAT Wind speed c), CMORPH rain rate d), distance to coast (e) and <i>in situ</i> measurement depth (f). In all plots the median and Std of Δ SSS for each bin is indicated by the red curves and black vertical thick bars (± 1 Std)	20

12	Temporal mean gridded over spatial boxes of size $1^\circ \times 1^\circ$ of Δ SSS (Aquarius SSS L3 OR v5 - Monthly - Rain mask (NASA-GSFC) - TSG (GOSUD-Sailing-ship)) for 5 different subdatasets corresponding to: RR=0 mm/h, $3 < U_{10} < 12$ m/s, SST > 5°C, distance to coast > 800 km (a), RR=0 mm/h, $3 < U_{10} < 12$ m/s (b), RR > 1mm/h and $U_{10} < 4$ m/s (c), WOA2013 SSS Std < 0.2 (d), WOA2013 SSS Std > 0.2 (e). . .	21
13	Normalized histogram of Δ SSS (Aquarius SSS L3 OR v5 - Monthly - Rain mask (NASA-GSFC) - TSG (GOSUD-Sailing-ship)) for 5 different subdatasets corresponding to: RR=0 mm/h, $3 < U_{10} < 12$ m/s, SST > 5°C, distance to coast > 800 km (a), RR=0 mm/h, $3 < U_{10} < 12$ m/s (b), RR > 1mm/h and $U_{10} < 4$ m/s (c), WOA2013 SSS Std < 0.2 (d), WOA2013 SSS Std > 0.2 (e).	22

Acronym

Aquarius	NASA/CONAE Salinity mission
ASCAT	Advanced Scatterometer
ATBD	Algorithm Theoretical Baseline Document
BLT	Barrier Layer Thickness
CMORPH	CPC MORPHing technique (precipitation analyses)
CPC	Climate Prediction Center
CTD	Instrument used to measure the conductivity, temperature, and pressure of seawater
DM	Delayed Mode
EO	Earth Observation
ESA	European Space Agency
FTP	File Transfer Protocol
GOSUD	Global Ocean Surface Underway Data
GTMBA	The Global Tropical Moored Buoy Array
Ifremer	Institut français de recherche pour l'exploitation de la mer
IPEV	Institut polaire français Paul-Émile Victor
IQR	Interquartile range
ISAS	<i>In Situ</i> Analysis System
Kurt	Kurtosis (fourth central moment divided by fourth power of the standard deviation)
L2	Level 2
LEGOS	Laboratoire d'Etudes en Géophysique et Océanographie Spatiales
LOCEAN	Laboratoire d'Océanographie et du Climat : Expérimentations et Approches Numériques
LOPS	Laboratoire d'Océanographie Physique et Spatiale
MDB	Match-up Data Base
MEOP	Marine Mammals Exploring the Oceans Pole to Pole
MLD	Mixed Layer Depth
NCEI	National Centers for Environmental Information
NRT	Near Real Time
NTAS	Northwest Tropical Atlantic Station
OI	Optimal interpolation
Pi-MEP	Pilot-Mission Exploitation Platform
PIRATA	Prediction and Researched Moored Array in the Atlantic
QC	Quality control
R_{sat}	Spatial resolution of the satellite SSS product
RAMA	Research Moored Array for African-Asian-Australian Monsoon Analysis and Prediction
r^2	Square of the Pearson correlation coefficient
RMS	Root mean square
RR	Rain rate
SAMOS	Shipboard Automated Meteorological and Oceanographic System
Skew	Skewness (third central moment divided by the cube of the standard deviation)
SMAP	Soil Moisture Active Passive (NASA mission)
SMOS	Soil Moisture and Ocean Salinity (ESA mission)
SPURS	Salinity Processes in the Upper Ocean Regional Study
SSS	Sea Surface Salinity
$SSS_{in situ}$	<i>In situ</i> SSS data considered for the match-up

SSS _{SAT}	Satellite SSS product considered for the match-up
ΔSSS	Difference between satellite and <i>in situ</i> SSS at colocalized point ($\Delta\text{SSS} = \text{SSS}_{\text{SAT}} - \text{SSS}_{\text{insitu}}$)
SST	Sea Surface Temperature
Std	Standard deviation
Std*	Robust Standard deviation = $\text{median}(\text{abs}(x - \text{median}(x))) / 0.67$ (less affected by outliers than Std)
Stratus	Surface buoy located in the eastern tropical Pacific
Survostral	SURveillance de l'Océan AuSTRAL (Monitoring the Southern Ocean)
TAO	Tropical Atmosphere Ocean
TSG	ThermoSalinoGraph
WHOI	Woods Hole Oceanographic Institution
WHOTS	WHOI Hawaii Ocean Time-series Station
WOA	World Ocean Atlas

1 Overview

In this report, we present systematic analyses of the Match-up DataBase (MDB) files generated by the Pi-MEP platform within the following Pi-MEP region and for the below pair of Satellite/*in situ* SSS data:

- Pi-MEP region: Mid-Low Latitudes 45N-45S (download the corresponding mask in NetCDF [here](#))
- SSS satellite product (SSS_{SAT}): Aquarius SSS L3 OR v5 - Monthly - Rain mask (NASA-GSFC)
- *In situ* dataset ($SSS_{In situ}$): TSG (GOSUD-Sailing-ship) (download the corresponding *in situ* report [here](#))

In the following, $\Delta SSS = SSS_{SAT} - SSS_{In situ}$ denotes the difference between the satellite and *in situ* SSS at the colocalized points that form the MDB.

This report presents successively:

The MDB file DataSets (Section 2)

- A short description of the satellite SSS product considered in the match-up (2.1)
- A short description of the *in situ* SSS dataset considered in the match-up (2.2)
- A short description of the auxiliary geophysical datasets co-localized with SSS pairs (2.3)
- An overview of how the Match-ups were evaluated (2.4)
- An overview of the MDB characteristics for the particular *in situ*/satellite pairs (2.5)

The major results of the MDB file Analyses (Section 3)

- Spatial Maps of the Time-mean and temporal Std of *in situ* and satellite SSS and of the ΔSSS (3.1)
- Time series of the monthly median and Std of *in situ* and satellite SSS and of the ΔSSS (3.2)
- Zonal mean and Std of *in situ* and satellite SSS and of the ΔSSS (3.3)
- Scatterplots of satellite vs *in situ* SSS by latitudinal bands (3.4)
- Time series of the monthly median and Std of the ΔSSS sorted by latitudinal bands (3.5)
- ΔSSS sorted as function of geophysical parameters (3.6)
- ΔSSS maps and statistics for different geophysical conditions (3.7)

All analyses are conducted over the Pi-MEP Region specified above and over the full satellite SSS product period. Original figures appearing in this report can be downloaded as PNG files [here](#) or by clicking directly on the figure.

2 The MDB file datasets

2.1 Satellite SSS product

2.1.1 Aquarius SSS L3 OR v5 - Monthly - Rain mask (NASA-GSFC)

Aquarius Level 3 sea surface salinity (SSS) rain-flagged standard mapped image data contains gridded 1 degree spatial resolution SSS averaged over daily, 7 day, monthly, and seasonal time scales. This particular data set is the monthly rain-flagged sea surface salinity product for version 5.0 of the Aquarius data set, which is the official end of mission public data release from the AQUARIUS/SAC-D mission. The Aquarius instrument is onboard the AQUARIUS/SAC-D satellite, a collaborative effort between NASA and the Argentinian Space Agency Comision Nacional de Actividades Espaciales (CONAE). The instrument consists of three radiometers in push broom alignment at incidence angles of 29, 38, and 46 degrees incidence angles relative to the shadow side of the orbit. Footprints for the beams are: 76 km (along-track) x 94 km (cross-track), 84 km x 120 km and 96km x 156 km, yielding a total cross-track swath of 370 km. The radiometers measure brightness temperature at 1.413 GHz in their respective horizontal and vertical polarizations (TH and TV). A scatterometer operating at 1.26 GHz measures ocean backscatter in each footprint that is used for surface roughness corrections in the estimation of salinity. The scatterometer has an approximate 390km swath.

Table 1: Satellite SSS product characteristics

Aquarius SSS L3 OR v5 - Monthly - Rain mask (NASA-GSFC)	
Spatial resolution	1°x1°
Temporal repeat	Monthly
Temporal coverage	From 2011-08-25 to 2015-06-07
Spatial coverage	Global [-180 180 -90 90]
Data Provider	NASA Aquarius project, Goddard Space Flight Center, USA
Release Date	2017-Dec-07
Version	5
User Guide	AquariusUserGuide_DatasetV5.0.pdf
Documentation	ftp://podaac-ftp.jpl.nasa.gov/allData/aquarius/docs/v5/
DOI	http://dx.doi.org/10.5067/AQR50-3YMCE
Reference	Meissner et al. (2018)

2.2 *In situ* SSS dataset

The TSG (GOSUD-Sailing-ship) dataset corresponds to observations of sea surface salinity obtained from voluntary sailing ships using medium or small size sensors. They complement the networks installed on research vessels or commercial ships. This delayed mode dataset (Reynaud et al. (2021)) is updated annually as a contribution to GOSUD (<http://www.gosud.org>) and freely available [here](#). Adjusted values when available and only collected TSG data that exhibit quality flags=1 and 2 were used.

2.3 Auxiliary geophysical datasets

Additional EO datasets are used to characterize the geophysical conditions at the *in situ*/satellite SSS pair measurement locations and time, and 10 days prior to the measurements, to get an

estimate of the geophysical concomitant condition and history. As discussed in [Boutin et al. \(2016\)](#), the presence of vertical gradients in, and horizontal variability of, sea surface salinity indeed complicates comparison of satellite and *in situ* measurements. The additional EO data are used here to get a first estimates of conditions for which L-band satellite SSS measured in the first centimeters of the upper ocean within a 50-150 km diameter footprint might differ from pointwise *in situ* measurements performed in general between 10 and 5 m depth below the surface. The spatio-temporal variability of SSS within a satellite footprint (50–150 km) is a major issue for satellite SSS validation in the vicinity of river plumes, frontal zones, and significant precipitation areas, among others. Rainfall can in some cases produce vertical salinity gradients exceeding 1 pss m^{-1} ; consequently, it is recommended that satellite and *in situ* SSS measurements less than 3–6 h after rain events should be considered with care when used in satellite calibration/validation analyses. To identify such situation, the Pi-MEP platform is first using [CMORPH](#) products to characterize the local value and history of rain rate and [ASCAT](#) gridded data are used to characterize the local surface wind speed and history. For validation purpose, the [ISAS](#) monthly SSS *in situ* analysed fields at 5 m depth are collocated and compared with the satellite SSS products. The use of ISAS is motivated by the fact that it is used in the SMOS L2 official validation protocol in which systematic comparisons of SMOS L2 retrieved SSS with ISAS are done. In complement to ISAS, monthly std climatological fields from the World Ocean Atlas (WOA13) at the match-up pairs location and date are also used to have an a priori information of the local SSS variability.

2.3.1 CMORPH

Precipitation are estimated using the [CMORPH](#) 3-hourly products at $1/4^\circ$ resolution ([Joyce et al. \(2004\)](#)). CMORPH (CPC MORPHing technique) produces global precipitation analyses at very high spatial and temporal resolution. This technique uses precipitation estimates that have been derived from low orbiter satellite microwave observations exclusively, and whose features are transported via spatial propagation information that is obtained entirely from geostationary satellite IR data. At present NOAA incorporate precipitation estimates derived from the passive microwaves aboard the DMSP 13, 14 and 15 (SSM/I), the NOAA-15, 16, 17 and 18 (AMSU-B), and AMSR-E and TMI aboard NASA's Aqua, TRMM and GPM spacecraft, respectively. These estimates are generated by algorithms of [Ferraro \(1997\)](#) for SSM/I, [Ferraro et al. \(2000\)](#) for AMSU-B and [Kummerow et al. \(2001\)](#) for TMI. Note that this technique is not a precipitation estimation algorithm but a means by which estimates from existing microwave rainfall algorithms can be combined. Therefore, this method is extremely flexible such that any precipitation estimates from any microwave satellite source can be incorporated.

With regard to spatial resolution, although the precipitation estimates are available on a grid with a spacing of 8 km (at the equator), the resolution of the individual satellite-derived estimates is coarser than that - more on the order of $12 \times 15 \text{ km}$ or so. The finer "resolution" is obtained via interpolation.

In effect, IR data are used as a means to transport the microwave-derived precipitation features during periods when microwave data are not available at a location. Propagation vector matrices are produced by computing spatial lag correlations on successive images of geostationary satellite IR which are then used to propagate the microwave derived precipitation estimates. This process governs the movement of the precipitation features only. At a given location, the shape and intensity of the precipitation features in the intervening half hour periods between microwave scans are determined by performing a time-weighting interpolation between microwave-derived features that have been propagated forward in time from the previous microwave observation and those that have been propagated backward in time from the following microwave scan. NOAA

refer to this latter step as "morphing" of the features.

For the present Pi-MEP products, we only considered the 3-hourly products at 1/4 degree resolution. The entire CMORPH record (December 2002-present) for 3-hourly, 1/4 degree lat/lon resolution can be found at: ftp://ftp.cpc.ncep.noaa.gov/precip/CMORPH_V1.0/CRT/. CMORPH estimates cover a global belt (-180°W to 180°E) extending from 60°S to 60°N latitude and are available for the complete period of the Pi-MEP core datasets (Jan 2010-now).

2.3.2 ASCAT

Advanced SCATterometer (ASCAT) daily data produced and made available at [Ifremer/CERSAT](#) on a 0.25°x0.25° resolution grid ([Bentamy and Fillon \(2012\)](#)) since March 2007 are used to characterize the mean daily wind at the match-up pair location as well as the wind history during the 10-days period preceding the in situ measurement date. These wind fields are calculated based on a geostatistical method with external drift. Remotely sensed data from ASCAT are considered as observations while those from numerical model analysis (ECMWF) are associated with the external drift. The spatial and temporal structure functions for wind speed, zonal and meridional wind components are estimated from ASCAT retrievals. Furthermore, the new procedure includes a temporal interpolation of the retrievals based on the complex empirical orthogonal function (CEOF) approach, in order to enhance the sampling length of the scatterometer observations. The resulting daily wind fields involves the main known surface wind patterns as well as some variation modes associated with temporal and spatial moving features. The accuracy of the gridded winds was investigated through comparisons with moored buoy data in [Bentamy et al. \(2012\)](#) and resulted in rms differences for wind speed and direction are about 1.50 m.s⁻¹ and 20°.

2.3.3 ISAS

The In Situ Analysis System (ISAS), as described in [Gaillard et al. \(2016\)](#) is a data based re-analysis of temperature and salinity fields over the global ocean 70°N–70°S on a 1/2° grid. It was initially designed to synthesize the temperature and salinity profiles collected by the Argo program. It has been later extended to accommodate all type of vertical profile as well as time series. ISAS gridded fields are entirely based on *in situ* measurements. The methodology and configuration have been conceived to preserve as much as possible the data information content and resolution. ISAS is developed and run in a research laboratory (LOPS) in close collaboration with Coriolis, one of Argo Global Data Assembly Center and unique data provider for the Mercator operational oceanography system. In Pi-MEP, the products used are the [INSITU_GLO_PHY_TS_OA_MY_013.052](#) for the period 2010 to 2021 and the [INSITU_GLO_PHY_TS_OA_NRT_013.002](#) for the Near-Real Time (2022-2023) derived at the Coriolis data center and provided by the Copernicus Marine Environment Monitoring Service (CMEMS). The major contribution to the data set is from Argo array of profiling floats, reaching an approximate resolution of one profile every 10-days and every 3-degrees over the satellite SSS period (<http://www.umr-lops.fr/SNO-Argo/Products/ISAS-T-S-fields/>). The ISAS optimal interpolation involves a structure function modeled as the sum of two Gaussian functions, each associated with specific time and space scales, resulting in a smoothing over typically 3 degrees. The smallest scale which can be retrieved with ISAS analysis is not smaller than 300–500 km ([Kolodziejczyk et al. \(2015\)](#)). For validation purpose, the ISAS monthly SSS fields at 5 m depth are collocated and compared with the satellite SSS products and included in the Pi-MEP Match-up files. In addition, the "percentage of variance" fields (PCTVAR) contained in the ISAS analyses provide information on the local variability of *in situ* SSS measurements within 1/2°x1/2° boxes.

2.3.4 World Ocean Atlas Climatology

The World Ocean Atlas (WOA) is a set of objectively analyzed (1° grid) climatological fields of *in situ* temperature, salinity and other variables provided at standard depth levels for annual, seasonal, and monthly compositing periods for the World Ocean. It also includes associated statistical fields of observed oceanographic profile data interpolated to standard depth levels on 5° , 1° , and 0.25° grids. We use these fields in complement to ISAS to characterize the climatological fields (monthly mean and std) at the match-up pairs location and date.

2.4 Overview of the Match-ups generation method

The match-up production is basically a three steps process:

1. preparation of the input *in situ* and satellite data, and,
2. co-localization of satellite products with *in situ* SSS measurements.
3. co-localization of the *in situ*/satellite pair with auxiliary information.

In the following, we successively detail the approaches taken for these different steps.

2.4.1 *In situ*/Satellite data filtering

The first step consists in filtering TSG (GOSUD-Sailing-ship) *in situ* data using the quality flags as described in 2.2 so that only valid salinity data remain in the final match-up files.

For high-spatial resolution *in situ* SSS measurements such as the Thermo-SalinoGraph (TSG) SSS data, as well as SSS data from surface drifters, an additional spatial filtering step is performed on the *in situ* data that will be eventually compared to the satellite SSS products. If R_{sat} is the spatial resolution of the satellite SSS product (L2 to L3-L4), the *in situ* data are spatially low pass filtered using a running median filter with a window width= R_{sat} to try to minimize the spatial representation uncertainty when comparing to the lower spatial resolution of the satellite SSS product. Both original and filtered *in situ* data are finally stored in the MDB files.

Only for satellite L2 SSS data, a third sub-step consists in filtering spurious data using the flags and associated recommendations as provided by the official data centers and described in 2.1.

2.4.2 *In situ*/Satellite Co-localization

In this step, each SSS satellite product is co-localized with the filtered *in situ* measurements. The method used for co-location is different if the satellite SSS is a swath product (so-called Level 2-types) or a time-space composite product (so-called Level 3/level 4-types).

- For L2 SSS swath data :

If R_{sat} is the spatial resolution of the satellite swath SSS product, for each *in situ* data sample collected in the Pi-MEP database, the platform searches for all satellite SSS data found at grid nodes located within a radius of $R_{sat}/2$ from the *in situ* data location and acquired with a time-lag from the *in situ* measurement date that is less or equal than ± 12 hours. If several satellite SSS samples are found to meet these criteria, the final satellite SSS match-up point is selected to be the closest in time from the *in situ* data measurement date. The final spatial and temporal lags between the *in situ* and satellite data are stored in the MDB files.

- For L3 and L4 composite SSS products :

If R_{sat} is the spatial resolution of the composite satellite SSS product and D the period over which the composite product was built (e.g., periods of 1, 7, 8, 9, 10, 18 days, 1 month, etc..) with central time t_o , then for each *in situ* data sample in the Pi-MEP database within the time interval $[t_o - D/2, t_o + D/2]$, the platform searches for all satellite SSS data of the composite product found at grid nodes located within a radius of $R_{sat}/2$ from the *in situ* data location. If several satellite SSS product samples are found to meet these criteria, the final satellite SSS match-up point is chosen to be the composite SSS with central time t_o which is the closest in time to the *in situ* data measurement date. The final spatial and temporal lags between the *in situ* and satellite data are stored in the MDB file.

Recently, in the context of the partnership with NASA, the Pi-MEP provides a new co-localization criterion that is applied only to L2 products, called "L2-Averaged". It consists in averaging all SSS L2 swath pixels falling in a spatio-temporal window defined by $R_{sat}=50\text{km}$ and $D = \pm 3.5$ days around the *in situ* location. The spatial and temporal lags stored in the MDB files correspond to the average of all lags for each *in situ* data.

2.4.3 MDB pair Co-localization with auxiliary data and complementary information

MDB data consist of satellite and *in situ* SSS pairs but also of auxiliary geophysical parameters such as local and history of wind speed and rain rates, as well as various information (climatology, distance to coast, mixed layer depth, barrier layer thickness, etc) that can be derived from *in situ* data and which are included in the final match-up files. The collocation of auxiliary parameters and additional information is done for each *in situ* SSS measurement contained in the match-up files as follows :

If t_{insitu} is the time/date at which the *in situ* measurement is performed, we collect:

- The [ASCAT](#) wind speed product of the same day than t_{insitu} found at the ASCAT $1/4^\circ$ grid node with closest distance from the *in situ* data location. We then store the time series of the ASCAT wind speed at the same node for the 10 days prior to the *in situ* measurement day.
- If the *in situ* data is located within the $60^\circ\text{N}-60^\circ\text{S}$ band, we select the [CMORPH](#) 3-hourly product that is closest in time from t_{insitu} and found at the CMORPH $1/4^\circ$ grid node with closest distance from the *in situ* data location. We then store the time series of the CMORPH rain rate at the same node for the 10 days prior to the *in situ* measurement time.

For the given month/year of the *in situ* data, we select the [ISAS](#) and [WOA](#) fields for the same month (and same year for ISAS fields) and take the SSS analysis (monthly mean, std) found at the closest grid node from the *in situ* measurement.

The distance from the *in situ* SSS data location to the nearest coast is evaluated and provided in km. We use a distance-to-coast map at $1/4^\circ$ resolution where small islands have been removed.

When vertical profiles of salinity (S) and temperature (T) are made available from the *in situ* measurements used to build the match-up (Argo or marine mammals), the following variables are also included into each satellite/*in situ* match-up file:

1. The vertical distribution of pressure at which the profiles were measured,
2. The vertical S(z) and T(z) profiles,

3. The vertical potential density anomaly profile $\sigma_0(z)$,
4. The Mixed Layer Depth (MLD). The MLD is defined here as the depth where the potential density has increased from the reference depth (10 meter) by a threshold equivalent to 0.2°C decrease in temperature at constant salinity: $\sigma_0 = \sigma_{010m} + \Delta\sigma_0$ with $\Delta\sigma_0 = \sigma_0(\theta_{10m} - 0.2, S_{10m}) - \sigma_0(\theta_{10m}, S_{10m})$ where θ_{10m} and S_{10m} are the temperature and salinity at the reference depth (i.e. 10 m) (de Boyer Montégut et al. (2004), de Boyer Montégut et al. (2007)).
5. The Top of the Thermocline Depth (TTD) is defined as the depth at which temperature decreases from its 10 m value by 0.2°C .
6. The Barrier Layer thickness (BLT) is defined as the difference between the MLD and the TTD. If $\text{BLT} < 0$, it corresponds to a vertically density compensated layer whose thickness is then the absolute value of (TTD-MLD).
7. The vertical profile of the buoyancy frequency $N^2(z)$

The resulting match-ups files are serialized as NetCDF-4 files whose structure depends on the origin of the *in situ* data and is described in section 2.4.4.

2.4.4 Content of the Match-Up NetCDF files

The content of the Match-Up NetCDF files for TSG (GOSUD-Sailing-ship) is described [here](#).

2.5 MDB characteristics for each specific *in situ*/satellite pair

2.5.1 Number of paired SSS data as a function of time and distance to coast

Figure 1 shows the time (a) and distance to coast (b) distributions of the match-ups between TSG (GOSUD-Sailing-ship) and Aquarius SSS L3 OR v5 - Monthly - Rain mask (NASA-GSFC) for the Mid-Low Latitudes 45N-45S Pi-MEP region and for the full satellite product period.

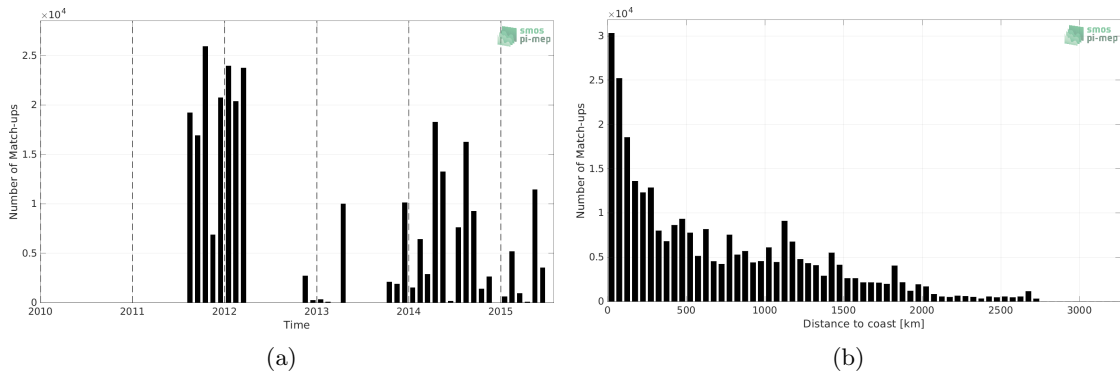


Figure 1: Number of match-ups between TSG (GOSUD-Sailing-ship) and Aquarius SSS L3 OR v5 - Monthly - Rain mask (NASA-GSFC) SSS as a function of time (a) and as function of the distance to coast (b) over the Mid-Low Latitudes 45N-45S Pi-MEP region and for the full satellite product period.

2.5.2 Histograms of the SSS match-ups

Figure 2 shows the SSS distribution of TSG (GOSUD-Sailing-ship) (a) and Aquarius SSS L3 OR v5 - Monthly - Rain mask (NASA-GSFC) (b) considering all match-up pairs per bins of 0.1 over the Mid-Low Latitudes 45N-45S Pi-MEP region and for the full satellite product period.

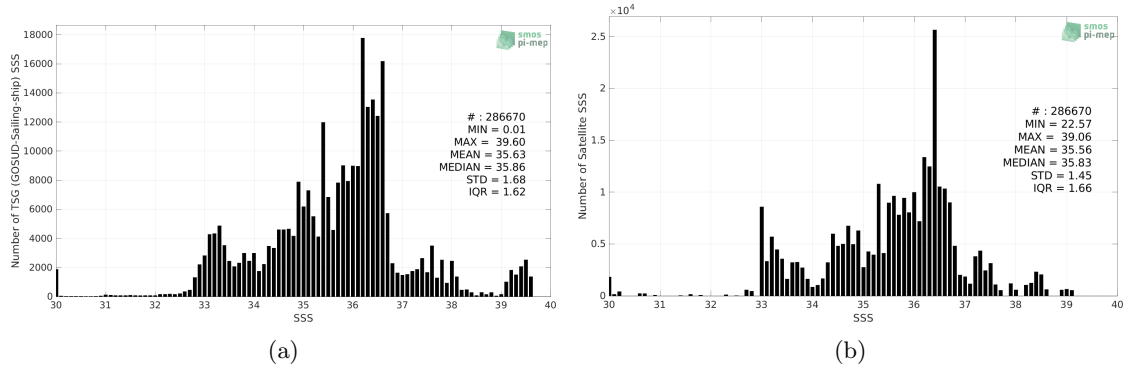


Figure 2: Histograms of SSS from TSG (GOSUD-Sailing-ship) (a) and Aquarius SSS L3 OR v5 - Monthly - Rain mask (NASA-GSFC) (b) considering all match-up pairs per bins of 0.1 over the Mid-Low Latitudes 45N-45S Pi-MEP region and for the full satellite product period.

2.5.3 Distribution of *in situ* SSS depth measurements

Figure 3 shows the depth distribution of the upper level SSS measurements from TSG (GOSUD-Sailing-ship) in the Match-up DataBase for the Mid-Low Latitudes 45N-45S Pi-MEP region (a) and temporal mean spatial distribution of pressure of the *in situ* SSS data over $1^\circ \times 1^\circ$ boxes and for the full satellite product period (b).

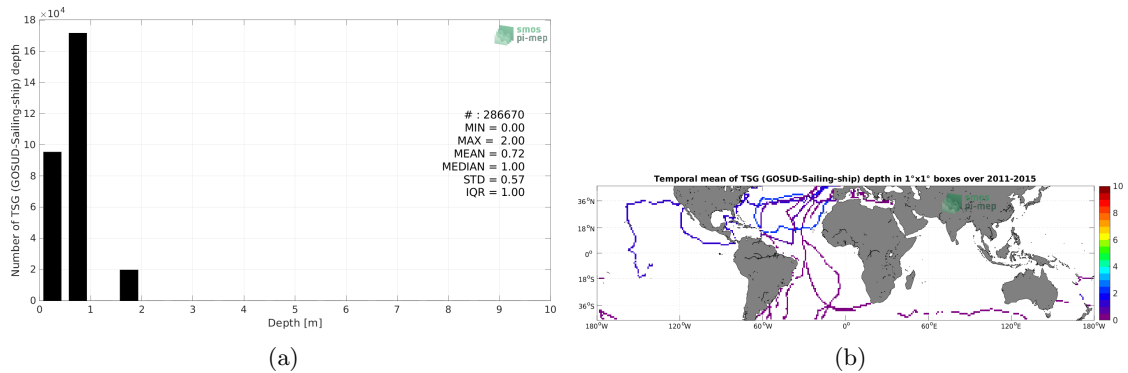


Figure 3: Histograms of the depth of the upper level SSS measurements from TSG (GOSUD-Sailing-ship) in the Match-up DataBase for the Mid-Low Latitudes 45N-45S Pi-MEP region (a) and temporal mean spatial distribution of pressure of the *in situ* SSS data over $1^\circ \times 1^\circ$ boxes and for the full satellite product period (b).

2.5.4 Spatial Distribution of Match-ups

The number of SSS match-ups between TSG (GOSUD-Sailing-ship) SSS and the Aquarius SSS L3 OR v5 - Monthly - Rain mask (NASA-GSFC) SSS product for the Mid-Low Latitudes 45N-

45S Pi-MEP region over $1^\circ \times 1^\circ$ boxes and for the full satellite product period is shown in Figure 4.

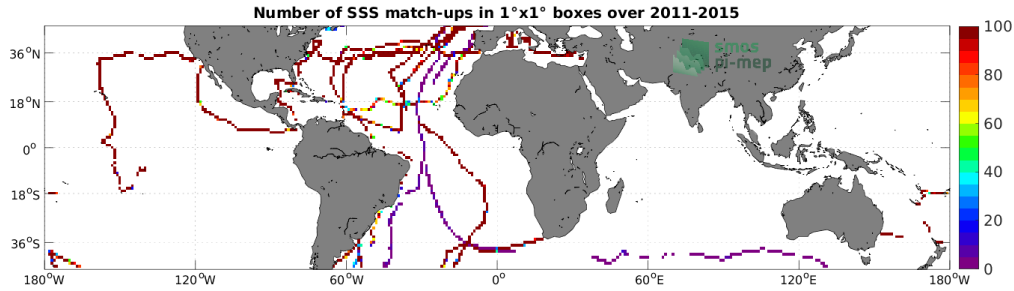


Figure 4: Number of SSS match-ups between TSG (GOSUD-Sailing-ship) SSS and the Aquarius SSS L3 OR v5 - Monthly - Rain mask (NASA-GSFC) SSS product for the Mid-Low Latitudes 45N-45S Pi-MEP region over $1^\circ \times 1^\circ$ boxes and for the full satellite product period.

2.5.5 Histograms of the spatial and temporal lags of the match-ups pairs

Figure 5 reveals the spatial (left) and temporal (right) lags between the location/time of the TSG (GOSUD-Sailing-ship) measurement and the position/date of the corresponding Aquarius SSS L3 OR v5 - Monthly - Rain mask (NASA-GSFC) SSS pixel of all match-ups pairs.

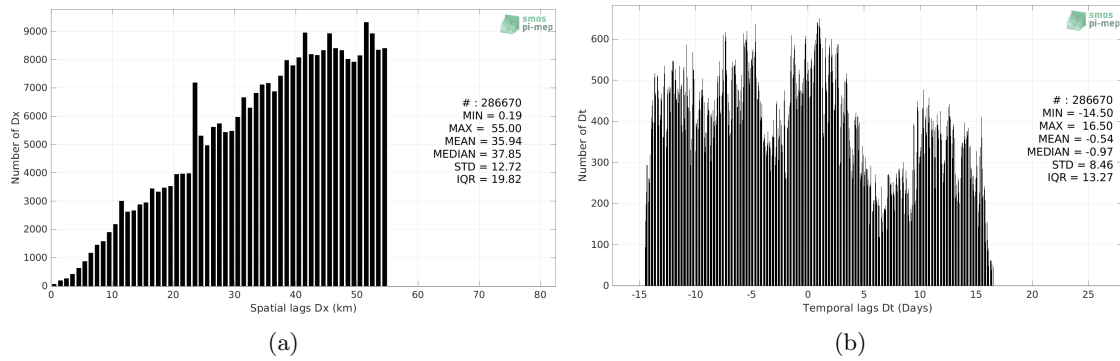


Figure 5: Histograms of the spatial (a) and temporal (b) lags between the location/time of the TSG (GOSUD-Sailing-ship) measurement and the date of the corresponding Aquarius SSS L3 OR v5 - Monthly - Rain mask (NASA-GSFC) SSS pixel.

3 MDB file Analyses

3.1 Spatial Maps of the Temporal mean and Std of *in situ* and satellite SSS and of their difference (Δ SSS)

In Figure 6, we show maps of temporal mean (left) and standard deviation (right) of the Aquarius SSS L3 OR v5 - Monthly - Rain mask (NASA-GSFC) (top) and of the TSG (GOSUD-Sailing-ship) *in situ* dataset at the collected Pi-MEP match-up pairs. The temporal mean and std are gridded over the full satellite product period and over spatial boxes of size $1^\circ \times 1^\circ$.

At the bottom of Figure 6, the temporal mean (left) and standard deviation (right) of the differences between the satellite SSS product and *in situ* data found at match-up pairs, namely

Δ SSS(Satellite -TSG (GOSUD-Sailing-ship)), is also gridded over the full satellite product period and over spatial boxes of size $1^\circ \times 1^\circ$.

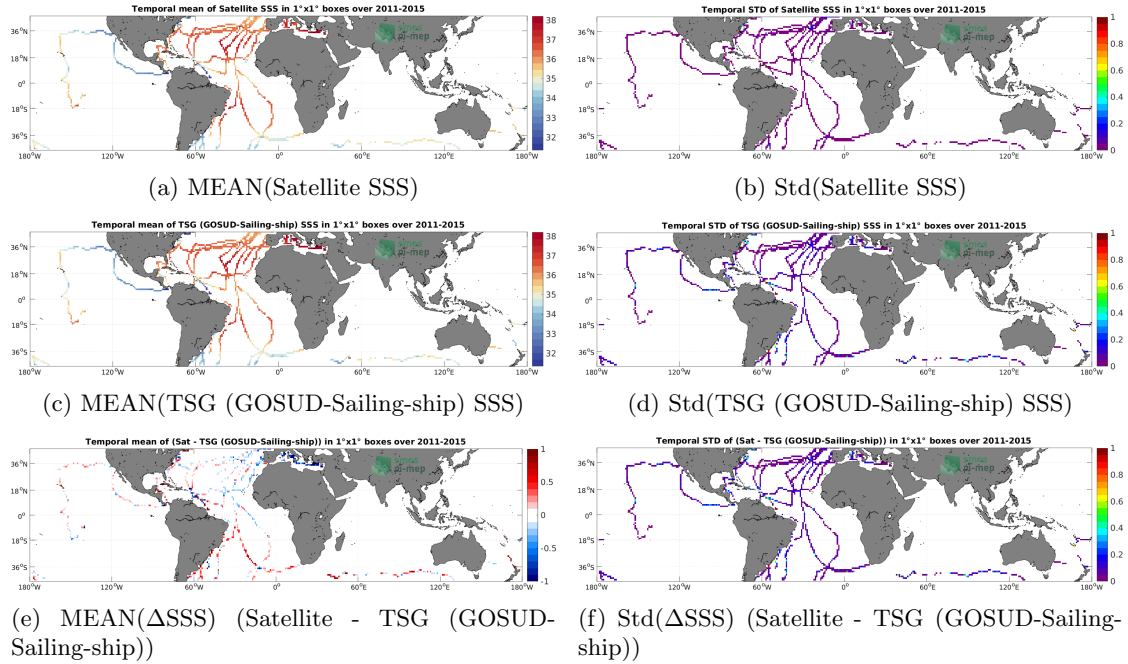


Figure 6: Temporal mean (left) and Std (right) of SSS from Aquarius SSS L3 OR v5 - Monthly - Rain mask (NASA-GSFC) (top), TSG (GOSUD-Sailing-ship) (middle), and of Δ SSS (Satellite - TSG (GOSUD-Sailing-ship)). Only match-up pairs are used to generate these maps.

3.2 Time series of the monthly median and Std of *in situ* and satellite SSS and of their difference (Δ SSS)

In the top panel of Figure 7, we show the time series of the monthly median SSS estimated over the full Mid-Low Latitudes 45N-45S Pi-MEP region for both Aquarius SSS L3 OR v5 - Monthly - Rain mask (NASA-GSFC) satellite SSS product (in black) and the TSG (GOSUD-Sailing-ship) *in situ* dataset (in blue) at the collected Pi-MEP match-up pairs.

In the middle panel of Figure 7, we show the time series of the monthly median of Δ SSS (Satellite - TSG (GOSUD-Sailing-ship)) for the collected Pi-MEP match-up pairs and estimated over the full Mid-Low Latitudes 45N-45S Pi-MEP region.

In the bottom panel of Figure 7, we show the time series of the monthly standard deviation of Δ SSS (Satellite - TSG (GOSUD-Sailing-ship)) for the collected Pi-MEP match-up pairs and estimated over the full Mid-Low Latitudes 45N-45S Pi-MEP region.

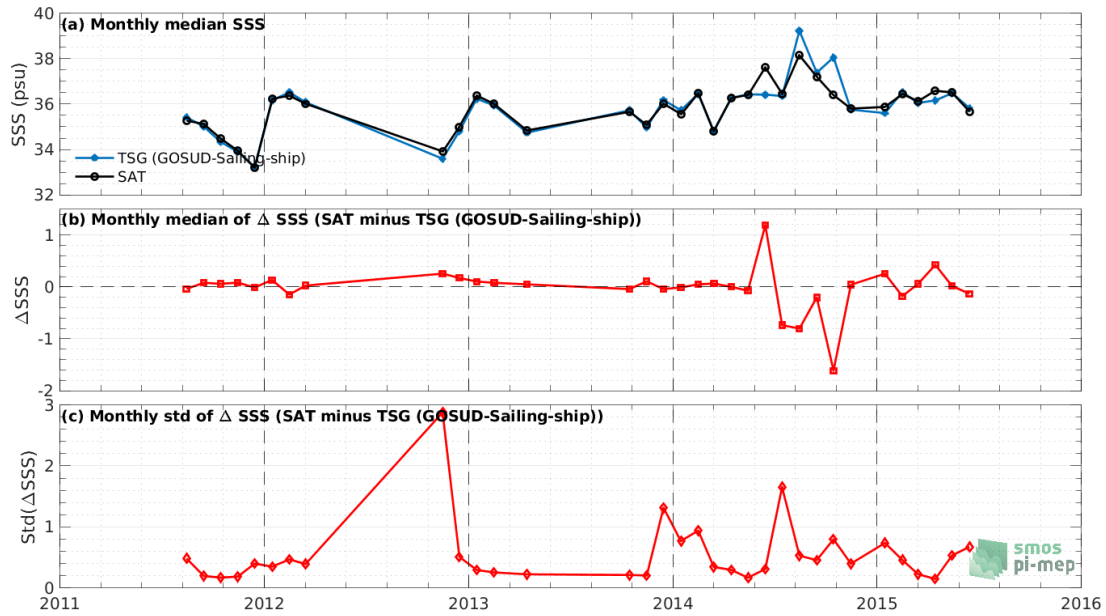


Figure 7: Time series of the monthly median SSS (top), median of Δ SSS (Satellite - TSG (GOSUD-Sailing-ship)) and Std of Δ SSS (Satellite - TSG (GOSUD-Sailing-ship)) over the Mid-Low Latitudes 45N-45S Pi-MEP region considering all match-ups collected by the Pi-MEP.

3.3 Zonal mean and Std of *in situ* and satellite SSS and of the difference (Δ SSS)

In Figure 8 left panel, we show the zonal mean SSS considering all Pi-MEP match-up pairs for both Aquarius SSS L3 OR v5 - Monthly - Rain mask (NASA-GSFC) satellite SSS product (in black) and the TSG (GOSUD-Sailing-ship) *in situ* dataset (in blue). The full satellite SSS product period is used to derive the mean.

In the right panel of Figure 8, we show the zonal mean of Δ SSS (Satellite - TSG (GOSUD-Sailing-ship)) for all the collected Pi-MEP match-up pairs estimated over the full satellite product period.

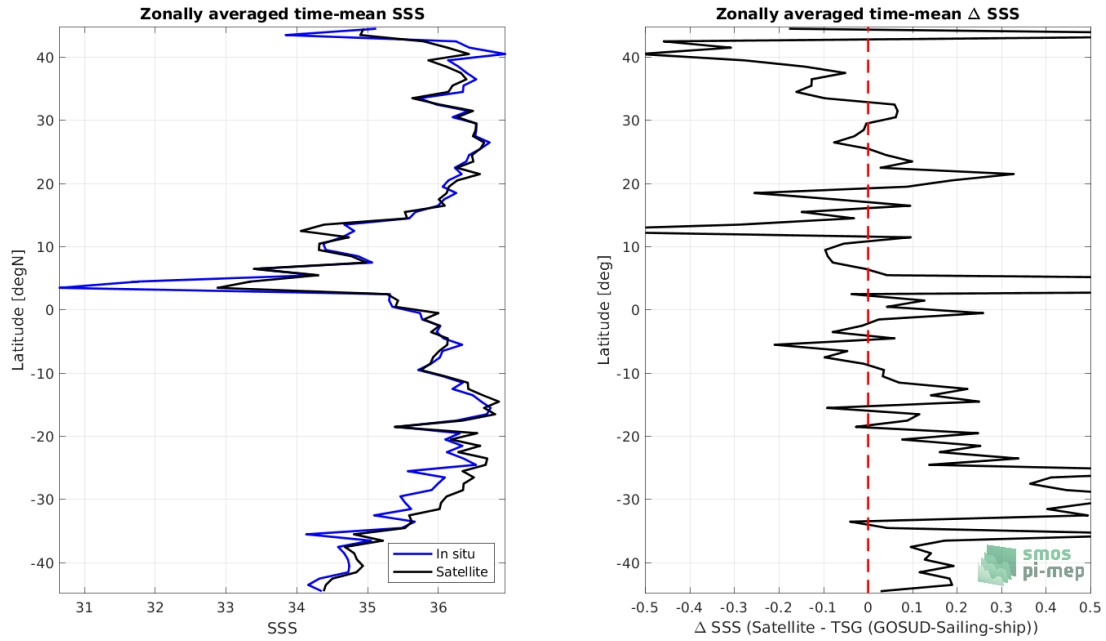


Figure 8: Left panel: Zonal mean SSS from Aquarius SSS L3 OR v5 - Monthly - Rain mask (NASA-GSFC) satellite product (black) and from TSG (GOSUD-Sailing-ship) (blue). Right panel: Zonal mean of Δ SSS (Satellite - TSG (GOSUD-Sailing-ship)) for all the collected Pi-MEP match-up pairs estimated over the full satellite product period.

3.4 Scatterplots of satellite vs *in situ* SSS by latitudinal bands

In Figure 9, contour maps of the concentration of Aquarius SSS L3 OR v5 - Monthly - Rain mask (NASA-GSFC) SSS (y-axis) versus TSG (GOSUD-Sailing-ship) SSS (x-axis) at match-up pairs for different latitude bands: (a) 80°S-80°N, (b) 20°S-20°N, (c) 40°S-20°S and 20°N-40°N and (d) 60°S-40°S and 40°N-60°N. For each plot, the red line shows $x=y$. The black thin and dashed lines indicate a linear fit through the data cloud and the $\pm 95\%$ confidence levels, respectively. The number match-up pairs n , the slope and R^2 coefficient of the linear fit, the root mean square (RMS) and the mean bias between satellite and *in situ* data are indicated for each latitude band in each plots.

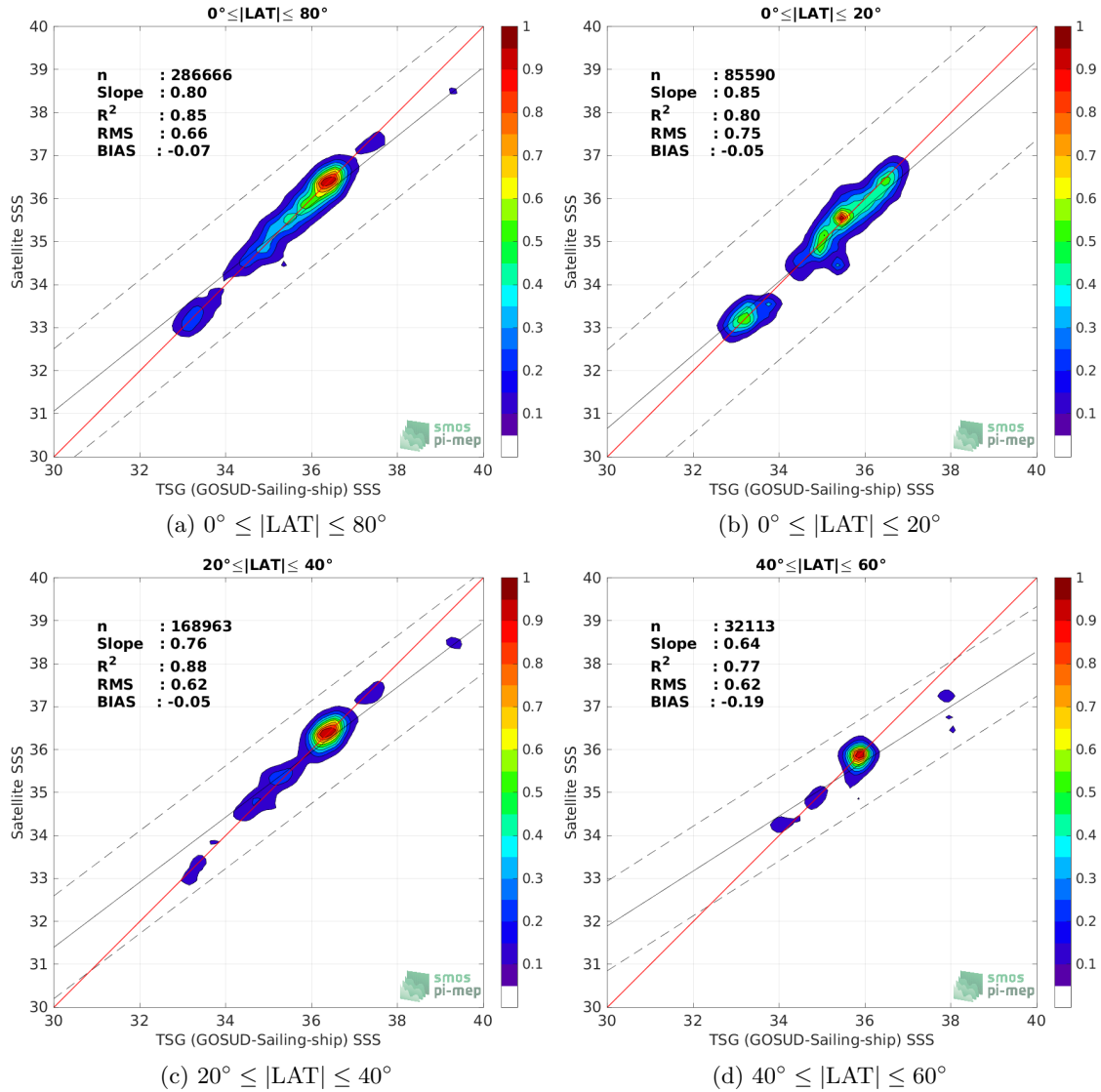


Figure 9: Contour maps of the concentration of Aquarius SSS L3 OR v5 - Monthly - Rain mask (NASA-GSFC) SSS (y-axis) versus TSG (GOSUD-Sailing-ship) SSS (x-axis) at match-up pairs for different latitude bands. For each plot, the red line shows $x=y$. The black thin and dashed lines indicate a linear fit through the data cloud and the $\pm 95\%$ confidence levels, respectively. The number match-up pairs n , the slope and R^2 coefficient of the linear fit, the root mean square (RMS) and the mean bias between satellite and *in situ* data are indicated for each latitude band in each plots.

3.5 Time series of the monthly median and Std of ΔSSS sorted by latitudinal bands

In Figure 10, time series of the monthly median (red curves) of ΔSSS (Satellite - TSG (GOSUD-Sailing-ship)) and ± 1 Std (black vertical thick bars) as function of time for all the collected Pi-MEP match-up pairs estimated over the Mid-Low Latitudes 45N-45S Pi-MEP region and

for the full satellite product period are shown for different latitude bands: (a) $80^{\circ}\text{S}-80^{\circ}\text{N}$, (b) $20^{\circ}\text{S}-20^{\circ}\text{N}$, (c) $40^{\circ}\text{S}-20^{\circ}\text{S}$ and $20^{\circ}\text{N}-40^{\circ}\text{N}$ and (d) $60^{\circ}\text{S}-40^{\circ}\text{S}$ and $40^{\circ}\text{N}-60^{\circ}\text{N}$.

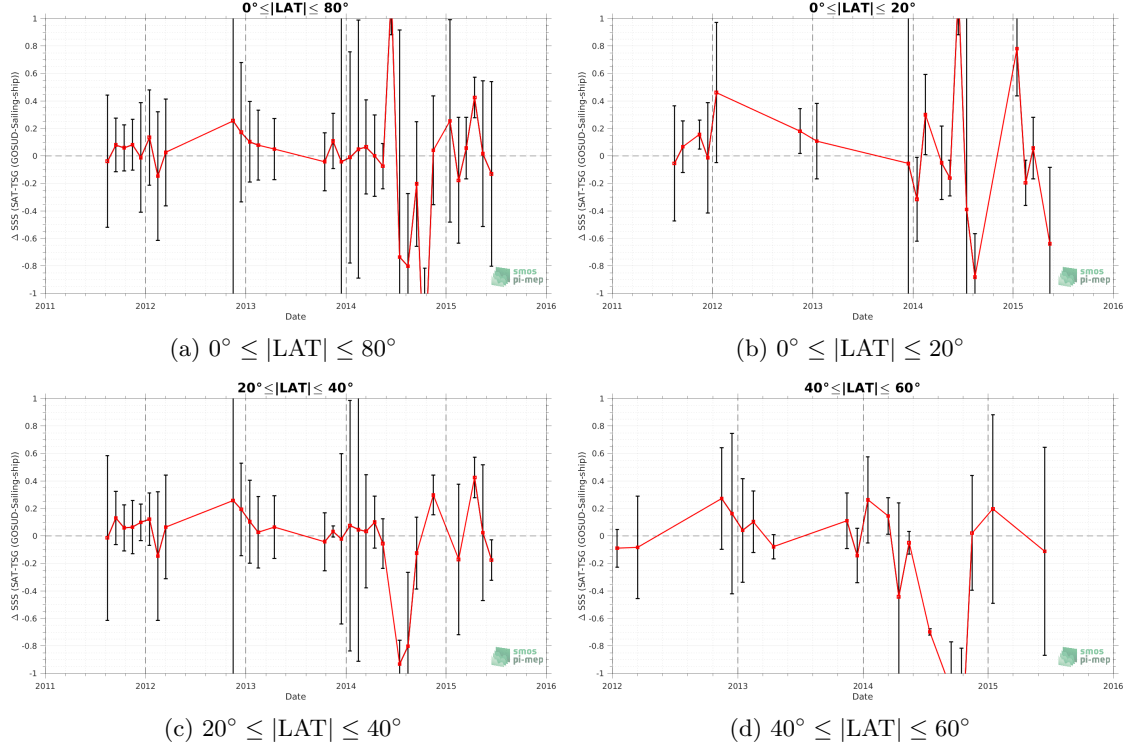


Figure 10: Monthly median (red curves) of ΔSSS (Satellite - TSG (GOSUD-Sailing-ship)) and ± 1 Std (black vertical thick bars) as function of time for all the collected Pi-MEP match-up pairs estimated over the Mid-Low Latitudes $45^{\circ}\text{N}-45^{\circ}\text{S}$ Pi-MEP region and for the full satellite product period are shown for different latitude bands: (a) $80^{\circ}\text{S}-80^{\circ}\text{N}$, (b) $20^{\circ}\text{S}-20^{\circ}\text{N}$, (c) $40^{\circ}\text{S}-20^{\circ}\text{S}$ and $20^{\circ}\text{N}-40^{\circ}\text{N}$ and (d) $60^{\circ}\text{S}-40^{\circ}\text{S}$ and $40^{\circ}\text{N}-60^{\circ}\text{N}$.

3.6 ΔSSS sorted as function of geophysical parameters

In Figure 11, we classify the match-up differences ΔSSS (Satellite - *in situ*) between Aquarius SSS L3 OR v5 - Monthly - Rain mask (NASA-GSFC) and TSG (GOSUD-Sailing-ship) SSS as function of the geophysical conditions at match-up points. The median and std of ΔSSS (Satellite - TSG (GOSUD-Sailing-ship)) is thus evaluated as function of the

- *in situ* SSS values per bins of width 0.2,
- *in situ* SST values per bins of width 1°C ,
- ASCAT daily wind values per bins of width 1 m/s,
- CMORPH 3-hourly rain rates per bins of width 1 mm/h,
- distance to coasts per bins of width 50 km,
- *in situ* measurement depth (if relevant).

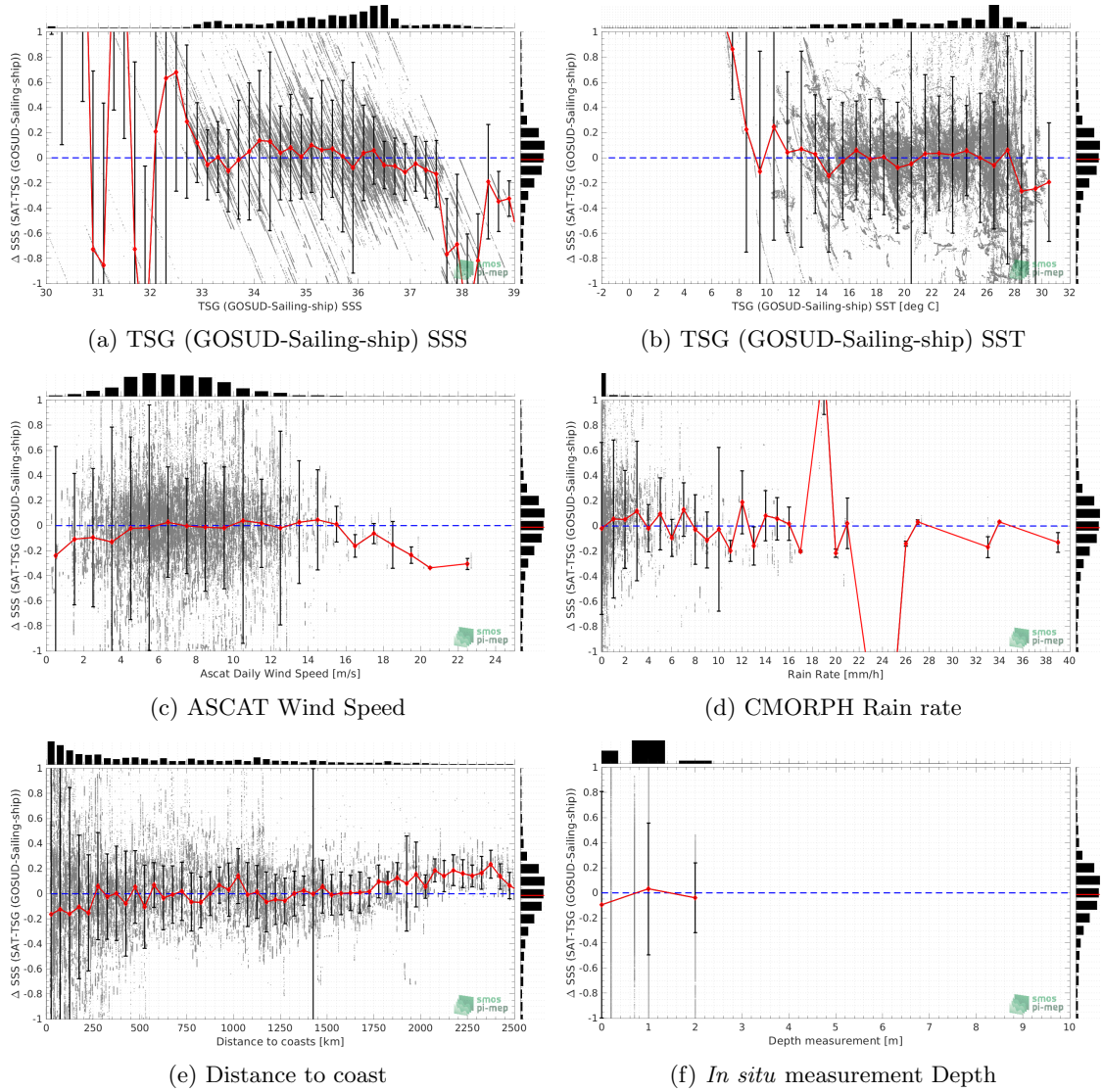


Figure 11: Δ SSS (Satellite - TSG (GOSUD-Sailing-ship)) sorted as function of TSG (GOSUD-Sailing-ship) SSS values a), TSG (GOSUD-Sailing-ship) SST b), ASCAT Wind speed c), CMORPH rain rate d), distance to coast (e) and *in situ* measurement depth (f). In all plots the median and Std of Δ SSS for each bin is indicated by the red curves and black vertical thick bars (± 1 Std)

3.7 Δ SSS maps and statistics for different geophysical conditions

In Figures 12 and 13, we focus on sub-datasets of the match-up differences Δ SSS (Satellite - *in situ*) between Aquarius SSS L3 OR v5 - Monthly - Rain mask (NASA-GSFC) and TSG (GOSUD-Sailing-ship) for the following specific geophysical conditions:

- **C1**: if the local value at *in situ* location of estimated rain rate is zero, mean daily wind is in the range [3, 12] m/s, the SST is $> 5^\circ\text{C}$ and distance to coast is > 800 km.

- **C2**:if the local value at *in situ* location of estimated rain rate is zero, mean daily wind is in the range [3, 12] m/s.
- **C3**:if the local value at *in situ* location of estimated rain rate is high (ie. > 1 mm/h) and mean daily wind is low (ie. < 4 m/s).
- **C5**:if the *in situ* data is located where the climatological SSS standard deviation is low (ie. above < 0.2).
- **C6**:if the *in situ* data is located where the climatological SSS standard deviation is high (ie. above > 0.2).

For each of these conditions, the temporal mean (gridded over spatial boxes of size $1^\circ \times 1^\circ$) and the histogram of the difference ΔSSS (Satellite - *in situ*) are presented.

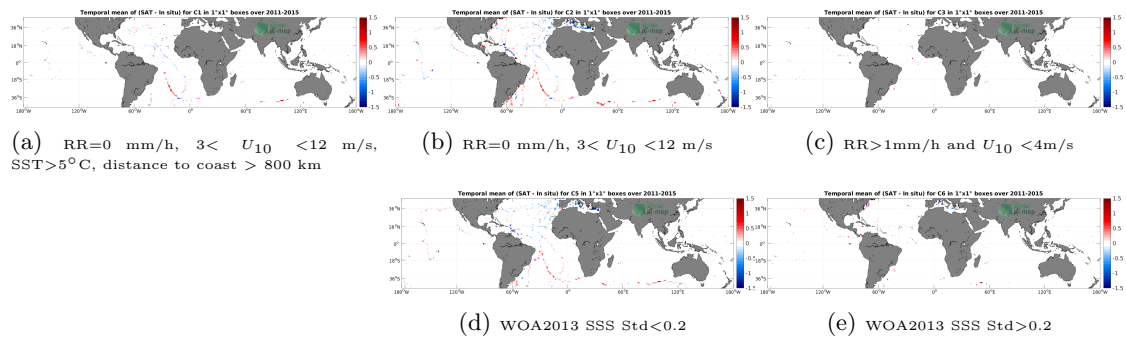


Figure 12: Temporal mean gridded over spatial boxes of size $1^\circ \times 1^\circ$ of ΔSSS (Aquarius SSS L3 OR v5 - Monthly - Rain mask (NASA-GSFC) - TSG (GOSUD-Sailing-ship)) for 5 different subdatasets corresponding to:RR=0 mm/h, $3 < U_{10} < 12$ m/s, SST $>5^\circ\text{C}$, distance to coast > 800 km (a), RR=0 mm/h, $3 < U_{10} < 12$ m/s (b), RR >1 mm/h and $U_{10} < 4$ m/s (c), WOA2013 SSS Std <0.2 (d), WOA2013 SSS Std >0.2 (e).

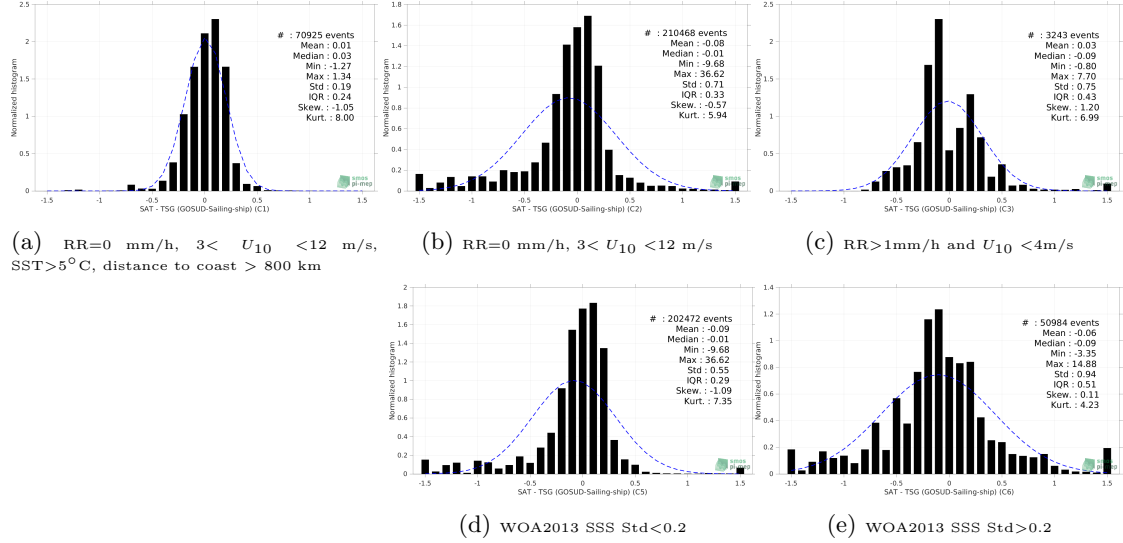


Figure 13: Normalized histogram of ΔSSS (Aquarius SSS L3 OR v5 - Monthly - Rain mask (NASA-GSFC) - TSG (GOSUD-Sailing-ship)) for 5 different subdatasets corresponding to: RR=0 mm/h, $3 < U_{10} < 12$ m/s, SST>5°C, distance to coast > 800 km (a), RR=0 mm/h, $3 < U_{10} < 12$ m/s (b), RR>1mm/h and $U_{10} < 4$ m/s (c), WOA2013 SSS Std<0.2 (d), WOA2013 SSS Std>0.2 (e).

4 Summary

► Table 1 shows the mean, median, standard deviation (Std), root mean square (RMS), interquartile range (IQR), correlation coefficient (r^2) and robust standard deviation (Std*) of the match-up differences ΔSSS (Satellite - *in situ*) between Aquarius SSS L3 OR v5 - Monthly - Rain mask (NASA-GSFC) and TSG (GOSUD-Sailing-ship) derived over the Mid-Low Latitudes 45N-45S Pi-MEP region and for the full satellite product period and for the following conditions:

- all: All the match-up pairs satellite/*in situ* SSS values are used to derive the statistics
- C1: only pairs where RR=0 mm/h, $3 < U_{10} < 12$ m/s, SST>5°C, distance to coast > 800 km
- C2: only pairs where RR=0 mm/h, $3 < U_{10} < 12$ m/s
- C3: only pairs where RR>1mm/h and $U_{10} < 4$ m/s
- C5: only pairs where WOA2013 SSS Std<0.2
- C6: only pairs at WOA2013 SSS Std>0.2
- C7a: only pairs with a distance to coast < 150 km.
- C7b: only pairs with a distance to coast in the range [150, 800] km.
- C7c: only pairs with a distance to coast > 800 km.
- C8a: only pairs where SST is < 5°C.

- C8b: only pairs where SST is in the range $[5, 15]^{\circ}\text{C}$.
- C8c: only pairs where SST is $> 15^{\circ}\text{C}$.
- C9a: only pairs where SSS is < 33 .
- C9b: only pairs where SSS is in the range $[33, 37]$.
- C9c: only pairs where SSS is > 37 .

Table 1: Statistics of ΔSSS (Satellite - TSG (GOSUD-Sailing-ship))

Condition	#	Median	Mean	Std	RMS	IQR	r^2	Std*
all	286670	-0.01	-0.07	0.67	0.67	0.33	0.845	0.24
C1	70925	0.03	0.01	0.19	0.19	0.24	0.970	0.17
C2	210468	-0.01	-0.08	0.71	0.72	0.33	0.825	0.24
C3	3243	-0.09	0.03	0.75	0.75	0.43	0.907	0.23
C5	202472	-0.01	-0.09	0.55	0.56	0.29	0.845	0.22
C6	50984	-0.09	-0.06	0.94	0.94	0.51	0.865	0.38
C7a	74040	-0.14	-0.18	1.16	1.17	0.81	0.772	0.58
C7b	108651	-0.03	-0.07	0.40	0.41	0.30	0.924	0.22
C7c	103979	0.03	0.02	0.31	0.31	0.25	0.937	0.18
C8a	4	36.62	36.62	0.00	36.62	0.00	NaN	0.00
C8b	22780	-0.03	-0.03	0.61	0.62	0.49	0.622	0.37
C8c	260170	-0.01	-0.07	0.66	0.67	0.33	0.856	0.24
C9a	9539	0.22	0.76	2.29	2.41	0.68	0.571	0.36
C9b	242303	0.01	-0.02	0.44	0.44	0.30	0.839	0.22
C9c	34828	-0.59	-0.66	0.60	0.89	0.87	0.528	0.65

► Table 2 presents statistics of ΔSSS (Satellite - ISAS) using only ISAS SSS values with $\text{PCTVAR} < 80\%$.

Table 2: Statistics of ΔSSS (Satellite - ISAS)

Condition	#	Median	Mean	Std	RMS	IQR	r^2	Std*
all	241760	-0.02	-0.09	0.43	0.44	0.29	0.901	0.21
C1	65129	0.00	-0.01	0.17	0.17	0.18	0.974	0.13
C2	175498	-0.01	-0.11	0.45	0.46	0.29	0.882	0.21
C3	3110	-0.09	0.04	0.37	0.37	0.73	0.960	0.30
C5	179032	-0.01	-0.09	0.39	0.40	0.24	0.897	0.18
C6	43971	-0.10	-0.10	0.54	0.55	0.45	0.890	0.36
C7a	47349	-0.21	-0.40	0.70	0.80	0.89	0.833	0.55
C7b	98654	-0.01	-0.04	0.35	0.35	0.25	0.926	0.19
C7c	95757	0.01	0.00	0.20	0.20	0.19	0.974	0.14
C8a	4	0.07	0.07	0.00	0.07	0.00	NaN	0.00
C8b	18547	-0.04	-0.10	0.44	0.45	0.36	0.731	0.27
C8c	219917	-0.01	-0.09	0.43	0.44	0.28	0.907	0.20
C9a	8489	-0.11	-0.33	0.94	1.00	0.35	0.710	0.29
C9b	210879	0.00	-0.03	0.32	0.32	0.26	0.916	0.19
C9c	22392	-0.43	-0.57	0.66	0.87	0.89	0.233	0.62

► Numerical values can be downloaded as csv files for [Table 1](#) and [Table 2](#).

5 More Comparison/Validation Materials

5.1 Comparisons with other satellite products

► Table 1 shows the mean, median, standard deviation (Std), root mean square (RMS), interquartile range (IQR), correlation coefficient (r^2) and robust standard deviation (Std*) of the match-up differences Δ SSS (Satellite - TSG (GOSUD-Sailing-ship)) between different satellite products and **TSG (GOSUD-Sailing-ship)** derived over the Mid-Low Latitudes 45N-45S Pi-MEP region considering all match-up pairs satellite/*in situ* SSS values to derive the statistics:

Table 1: Statistics of Δ SSS (Satellite - TSG (GOSUD-Sailing-ship)) - All

Satellite products	#	Median	Mean	Std	RMS	IQR	r^2	Std*
smos-l2-v700	226223	0.04	0.00	0.77	0.77	0.92	0.658	0.69
smap-l2-rss-v5	128404	0.05	0.06	0.55	0.56	0.63	0.764	0.47
smap-l2-rss-v5-40km	117155	0.05	0.06	0.91	0.91	1.12	0.544	0.83
smap-l2-jpl-v5.0	137626	0.02	-0.01	0.97	0.97	0.91	0.512	0.68
aquarius-l2-or-v5	77229	-0.07	-0.19	0.67	0.69	0.47	0.828	0.32
aquarius-l2-jpl-v5	65707	0.02	0.03	0.60	0.60	0.51	0.851	0.39
smos-l3-catds-cpdc-v331-l2q	200367	0.01	0.02	0.82	0.82	0.88	0.605	0.66
smos-l3-catds-cpdc-v332-9d	502148	-0.01	0.00	0.44	0.44	0.32	0.901	0.24
smos-l3-catds-cpdc-v335-10d-25km	514921	-0.02	-0.04	0.54	0.54	0.40	0.853	0.30
smos-l3-catds-cpdc-v335-1m-25km	508722	-0.02	-0.05	0.54	0.54	0.31	0.860	0.23
smos-l3-catds-locean-v8-9d	776888	0.00	0.02	0.48	0.48	0.36	0.901	0.27
smos-l3-catds-locean-v8-18d	776887	0.00	0.01	0.41	0.42	0.26	0.926	0.19
smos-l3-bec-v2-9d	559058	-0.02	0.00	0.68	0.68	0.42	0.793	0.31
smos-l3-cmems-v331-l2q-noflag	323375	-0.02	-0.16	2.63	2.63	1.12	0.130	0.83
smos-l3-cmems-v331-l2q-withflag	308408	-0.02	-0.08	1.99	1.99	1.06	0.253	0.79
smap-l3-rss-v5-8dr	148115	0.04	0.03	0.33	0.33	0.32	0.899	0.24
smap-l3-rss-v5-1m	131870	0.02	0.02	0.34	0.34	0.27	0.898	0.20
smap-l3-jpl-v5.0-8dr	150589	0.06	0.05	0.44	0.44	0.37	0.830	0.27
smap-l3-jpl-v5.0-1m	135364	0.02	0.02	0.44	0.44	0.30	0.837	0.22
aquarius-l3-or-v5-7dr	249219	-0.02	-0.08	0.72	0.72	0.33	0.828	0.25
aquarius-l3-or-v5-1m	286670	-0.03	-0.08	0.67	0.67	0.34	0.846	0.25
aquarius-l3-or-v5-7dr-rain-mask	245050	-0.02	-0.06	0.72	0.72	0.32	0.831	0.23
aquarius-l3-or-v5-1m-rain-mask	286670	-0.01	-0.07	0.67	0.67	0.33	0.845	0.24
aquarius-l3-jpl-v5-7dr	208829	0.07	0.07	0.42	0.43	0.28	0.908	0.21
aquarius-l3-jpl-v5-1m	220300	0.11	0.13	0.58	0.60	0.26	0.867	0.19
smos-l4-bec-v2-1d	691114	-0.02	0.10	1.67	1.68	0.35	0.363	0.26
smos-smap-l4-lops-oi-v1-7d	478890	0.00	0.02	0.47	0.47	0.25	0.918	0.19
smos-l4-cmems-catds-lops-oi-v342-1w	534199	0.00	0.01	0.45	0.45	0.30	0.917	0.23
smos-l4-cmems-cnr-v1-1w	713352	-0.01	0.00	0.56	0.56	0.23	0.869	0.17
smos-l4-cmems-cnr-v1-1m	700273	-0.03	-0.01	0.56	0.56	0.24	0.870	0.18
cci-l4-esa-merged-oi-v4.3-7dr	463055	-0.02	-0.01	0.33	0.33	0.20	0.946	0.15
cci-l4-esa-merged-oi-v4.3-30dr	558776	-0.01	0.01	0.47	0.47	0.22	0.898	0.17
smap-l4-esr-oi-v2-7d	420081	-0.01	-0.01	0.56	0.56	0.23	0.886	0.17
smap-l4-esr-oi-v2-1m	406478	-0.01	-0.02	0.56	0.56	0.23	0.891	0.17
aquarius-l4-iprc-v5-1w	264767	-0.02	-0.04	0.56	0.56	0.27	0.839	0.18
aquarius-l4-iprc-v5-1m	253670	-0.03	-0.05	0.57	0.57	0.26	0.837	0.18

► Table 2 is similar to Table 1 but considering only match-up pairs where $RR=0$ mm/h, $3 < U_{10} < 12$ m/s, $SST > 5^\circ\text{C}$, distance to coast > 800 km.

Table 2: Statistics of ΔSSS (Satellite - TSG (GOSUD-Sailing-ship)) - C1

Satellite products	#	Median	Mean	Std	RMS	IQR	r^2	Std*
smos-l2-v700	97861	0.07	0.03	0.65	0.65	0.79	0.685	0.60
smap-l2-rss-v5	45218	0.02	0.02	0.48	0.48	0.60	0.820	0.45
smap-l2-rss-v5-40km	42975	0.00	0.00	0.83	0.83	1.09	0.607	0.81
smap-l2-jpl-v5.0	46653	-0.02	-0.04	0.63	0.64	0.81	0.723	0.60
aquarius-l2-or-v5	29015	-0.01	-0.01	0.25	0.25	0.29	0.951	0.22
aquarius-l2-jpl-v5	28894	0.06	0.08	0.34	0.34	0.44	0.915	0.33
smos-l3-catds-cpdc-v331-l2q	81175	0.03	0.04	0.70	0.70	0.75	0.672	0.55
smos-l3-catds-cpdc-v332-9d	173722	0.00	0.01	0.21	0.21	0.26	0.958	0.20
smos-l3-catds-cpdc-v335-10d-25km	173221	0.01	0.01	0.25	0.25	0.32	0.937	0.24
smos-l3-catds-cpdc-v335-1m-25km	169547	-0.02	-0.01	0.19	0.19	0.23	0.964	0.17
smos-l3-catds-locean-v8-9d	232516	-0.01	0.00	0.21	0.21	0.27	0.955	0.20
smos-l3-catds-locean-v8-18d	232516	-0.02	-0.01	0.16	0.16	0.20	0.973	0.15
smos-l3-bec-v2-9d	158906	-0.01	-0.01	0.25	0.25	0.34	0.930	0.26
smos-l3-cmems-v331-l2q-noflag	108619	0.02	0.03	0.81	0.81	0.82	0.626	0.62
smos-l3-cmems-v331-l2q-withflag	105769	0.02	0.04	0.77	0.77	0.80	0.642	0.60
smap-l3-rss-v5-8dr	51353	0.00	-0.02	0.24	0.24	0.27	0.949	0.20
smap-l3-rss-v5-1m	44884	-0.01	-0.01	0.17	0.17	0.21	0.975	0.16
smap-l3-jpl-v5.0-8dr	51361	0.02	-0.01	0.27	0.27	0.32	0.933	0.24
smap-l3-jpl-v5.0-1m	44892	-0.01	-0.02	0.20	0.20	0.24	0.961	0.17
aquarius-l3-or-v5-7dr	70746	0.00	-0.01	0.21	0.21	0.22	0.964	0.17
aquarius-l3-or-v5-1m	70925	0.02	-0.01	0.19	0.19	0.22	0.969	0.17
aquarius-l3-or-v5-7dr-rain-mask	69902	0.00	0.00	0.20	0.20	0.22	0.968	0.16
aquarius-l3-or-v5-1m-rain-mask	70925	0.03	0.01	0.19	0.19	0.24	0.970	0.17
aquarius-l3-jpl-v5-7dr	70925	0.09	0.08	0.20	0.22	0.23	0.966	0.18
aquarius-l3-jpl-v5-1m	69578	0.10	0.09	0.18	0.20	0.22	0.974	0.16
smos-l4-bec-v2-1d	194385	-0.02	-0.01	0.22	0.22	0.28	0.952	0.21
smos-smap-l4-lops-oi-v1-7d	126893	-0.01	0.01	0.15	0.15	0.19	0.975	0.14
smos-l4-cmems-catds-lops-oi-v342-1w	148235	-0.01	0.00	0.19	0.19	0.25	0.959	0.19
smos-l4-cmems-cnr-v1-1w	191363	0.00	0.00	0.17	0.17	0.16	0.969	0.12
smos-l4-cmems-cnr-v1-1m	186495	-0.02	-0.01	0.17	0.17	0.17	0.970	0.12
cci-l4-esa-merged-oi-v4.3-7dr	162724	-0.01	-0.01	0.15	0.15	0.17	0.978	0.13
cci-l4-esa-merged-oi-v4.3-30dr	168736	-0.02	-0.02	0.16	0.16	0.18	0.974	0.13
smap-l4-esr-oi-v2-7d	107991	0.01	0.01	0.15	0.15	0.18	0.980	0.13
smap-l4-esr-oi-v2-1m	101554	0.01	0.02	0.16	0.16	0.17	0.980	0.13
aquarius-l4-iprc-v5-1w	71716	0.03	0.02	0.15	0.15	0.18	0.981	0.13
aquarius-l4-iprc-v5-1m	70301	0.02	0.02	0.15	0.15	0.18	0.982	0.13

- Numerical values can be downloaded as csv files for [Table 1](#) and [Table 2](#).
- Figures using numerical values of Table 1 sorted by [MEDIANs](#), [MEANs](#), [IQR](#), [RMS](#), [STD](#), [R2](#) are also provided.
- Figures using numerical values of Table 2 sorted by [MEDIANs](#), [MEANs](#), [IQR](#), [RMS](#), [STD](#), [R2](#) are also provided.

Caution has to be made in the interpretation of the "ranking" between different satellite products in particular when looking at the dispersion parameters like the standard deviation (STD), or the interquartile range (IQR). Keep in mind that low spatial and/or temporal resolution satellite SSS products tend to have lower dispersions than products at higher resolutions. For example, a level 2 (swath) product of a specific sensor will always have more dispersion than level 3 or 4 products where spatial and temporal averaging tend to reduce the instrumental noise and potential small scale variability. In general, products at $1^\circ \times 1^\circ$ spatial resolution have lower dispersion than products at $0.25^\circ \times 0.25^\circ$. Same result applies for monthly products compared to daily products.

5.2 Statistics derived for the different *in situ* databases

► Table 1 shows the mean, median, standard deviation (Std), root mean square (RMS), interquartile range (IQR), correlation coefficient (r^2) and robust standard deviation (Std*) of the match-up differences Δ SSS (Satellite - *in situ*) between **Aquarius SSS L3 OR v5 - Monthly - Rain mask (NASA-GSFC)** and all the available *in situ* datasets derived over the Mid-Low Latitudes 45N-45S Pi-MEP region and for the full satellite product period and considering all match-up pairs satellite/*in situ* SSS values to derive the statistics:

Table 1: Statistics of Δ SSS (Satellite - *in situ*)

<i>in situ</i> database	#	Median	Mean	Std	RMS	IQR	r^2	Std*
argo	327526	-0.03	-0.08	0.45	0.46	0.26	0.915	0.20
tsg-legos-dm	976802	-0.04	-0.08	0.73	0.73	0.33	0.703	0.25
tsg-gosud-research-vessel	661228	-0.05	-0.15	1.12	1.13	0.38	0.513	0.28
tsg-gosud-sailing-ship	286670	-0.01	-0.07	0.67	0.67	0.33	0.845	0.24
tsg-samos	4030950	0.19	0.37	1.16	1.22	0.64	0.572	0.44
mammal	7004	0.00	-0.01	0.34	0.34	0.41	0.933	0.30
drifter	862912	-0.02	-0.02	0.30	0.30	0.17	0.886	0.13
tsg-polarstern	65597	-0.14	-0.15	0.21	0.26	0.20	0.891	0.15
tsg-csic-utm	401223	-0.06	-0.15	0.55	0.57	0.37	0.992	0.26

► Table 2 is similar to Table 1 but considering only match-up pairs where $RR=0$ mm/h, $3 < U_{10} < 12$ m/s, $SST > 5^\circ C$, distance to coast > 800 km.

Table 2: Statistics of Δ SSS (Satellite - *in situ*)

<i>in situ</i> database	#	Median	Mean	Std	RMS	IQR	r^2	Std*
argo	120125	-0.02	-0.02	0.18	0.19	0.21	0.961	0.16
tsg-legos-dm	192284	-0.02	-0.02	0.20	0.20	0.22	0.957	0.16
tsg-gosud-research-vessel	99542	-0.01	-0.01	0.24	0.24	0.27	0.946	0.21
tsg-gosud-sailing-ship	70925	0.03	0.01	0.19	0.19	0.24	0.970	0.17
tsg-samos	578968	0.08	0.12	0.26	0.28	0.27	0.924	0.20
mammal	1073	0.04	0.03	0.24	0.24	0.27	0.681	0.20
drifter	532112	-0.02	-0.02	0.14	0.14	0.15	0.922	0.12
tsg-polarstern	13901	-0.14	-0.15	0.20	0.25	0.16	0.915	0.12
tsg-csic-utm	43092	-0.03	-0.14	0.43	0.45	0.32	0.803	0.21

► Numerical values can be downloaded as csv files for [Table 1](#) and [Table 2](#).

References

- Abderrahim Bentamy and Denis Croize Fillon. Gridded surface wind fields from Metop/ASCAT measurements. *Int. J. Remote Sens.*, 33(6):1729–1754, March 2012. ISSN 1366-5901. doi: [10.1080/01431161.2011.600348](https://doi.org/10.1080/01431161.2011.600348).
- Abderrahim Bentamy, Semyon A. Grodsky, James A. Carton, Denis Croizé-Fillon, and Bertrand Chapron. Matching ASCAT and QuikSCAT winds. *J. Geophys. Res.*, 117(C2), February 2012. ISSN 0148-0227. doi: [10.1029/2011JC007479](https://doi.org/10.1029/2011JC007479).
- Jaqueline Boutin, Y. Chao, W. E. Asher, T. Delcroix, R. Drucker, K. Drushka, N. Kolodziejczyk, T. Lee, N. Reul, G. Reverdin, J. Schanze, A. Soloviev, L. Yu, J. Anderson, L. Brucker, E. Dinnat, A. S. Garcia, W. L. Jones, C. Maes, T. Meissner, W. Tang, N. Vinogradova, and B. Ward. Satellite and In Situ Salinity: Understanding Near-Surface Stratification and Sub-footprint Variability. *Bull. Am. Meteorol. Soc.*, 97(8):1391–1407, 2016. ISSN 1520-0477. doi: [10.1175/bams-d-15-00032.1](https://doi.org/10.1175/bams-d-15-00032.1).
- Clément de Boyer Montégut, Gurvan Madec, A. S. Fischer, A. Lazar, and D. Ludicone. Mixed layer depth over the global ocean: An examination of profile data and a profile-based climatology. *J. Geophys. Res.*, 109(C12), December 2004. doi: [10.1029/2004jc002378](https://doi.org/10.1029/2004jc002378).
- Clément de Boyer Montégut, Juliette Mignot, Alban Lazar, and Sophie Cravatte. Control of salinity on the mixed layer depth in the world ocean: 1. General description. *J. Geophys. Res.*, 112(C6), June 2007. ISSN 0148-0227. doi: [10.1029/2006jc003953](https://doi.org/10.1029/2006jc003953).
- Ralph R. Ferraro. SSM/I derived global rainfall estimates for climatological applications. *J. Geophys. Res.*, 102(D14):16715–16736, 07 1997. doi: [10.1029/97JD01210](https://doi.org/10.1029/97JD01210).
- Ralph R. Ferraro, Fuzhong Weng, Norman C. Grody, and Limin Zhao. Precipitation characteristics over land from the NOAA-15 AMSU sensor. *Geophys. Res. Lett.*, 27(17):2669–2672, 2000. doi: [10.1029/2000GL011665](https://doi.org/10.1029/2000GL011665).
- Fabienne Gaillard, Thierry Reynaud, Virginie Thierry, Nicolas Kolodziejczyk, and Karina von Schuckmann. In Situ-Based Reanalysis of the Global Ocean Temperature and Salinity with ISAS: Variability of the Heat Content and Steric Height. *J. Clim.*, 29(4):1305–1323, February 2016. ISSN 1520-0442. doi: [10.1175/jcli-d-15-0028.1](https://doi.org/10.1175/jcli-d-15-0028.1).
- Robert J. Joyce, John E. Janowiak, Phillip A. Arkin, and Pingping Xie. CMORPH: A Method that Produces Global Precipitation Estimates from Passive Microwave and Infrared Data at High Spatial and Temporal Resolution. *J. Hydrometeorol.*, 5(3):487–503, June 2004. doi: [10.1175/1525-7541\(2004\)005<0487:camtpg>2.0.co;2](https://doi.org/10.1175/1525-7541(2004)005<0487:camtpg>2.0.co;2).
- Nicolas Kolodziejczyk, Gilles Reverdin, and Alban Lazar. Interannual Variability of the Mixed Layer Winter Convection and Spice Injection in the Eastern Subtropical North Atlantic. *J. Phys. Oceanogr.*, 45(2):504–525, Feb 2015. ISSN 1520-0485. doi: [10.1175/jpo-d-14-0042.1](https://doi.org/10.1175/jpo-d-14-0042.1).
- Christian Kummerow, Y. Hong, W. S. Olson, S. Yang, R. F. Adler, J. McCollum, R. Ferraro, G. Petty, D-B. Shin, and T. T. Wilheit. The Evolution of the Goddard Profiling Algorithm (GPROF) for Rainfall Estimation from Passive Microwave Sensors. *J. Appl. Meteorol.*, 40(11):1801–1820, 2001. doi: [10.1175/1520-0450\(2001\)040<1801:TEOTGP>2.0.CO;2](https://doi.org/10.1175/1520-0450(2001)040<1801:TEOTGP>2.0.CO;2).
- Thomas Meissner, Frank J. Wentz, and David M. Le Vine. The Salinity Retrieval Algorithms for the NASA Aquarius Version 5 and SMAP Version 3 Releases. *Remote Sens.*, 10(7):1121, jul 2018. doi: [10.3390/rs10071121](https://doi.org/10.3390/rs10071121).

Thierry Reynaud, Nicolas Kolodziejczyk, Christophe Maes, Fabienne Gaillard, Gilles Reverdin, Floriane Desprez De Gesincourt, and Hervé Le Goff. Sea surface salinity from sailing ships : Delayed mode dataset, annual release, 2021. doi: <https://doi.org/10.17882/39476>.